

# EUCALYPTUS REMOVALS PROJECT OVERVIEW

This project has **three distinct phases** of removals work, each separated by a restoration phase of work completed by another contractor. Each phase is divided into discrete areas which fall under one of three protocols:

**General Removals** protocol: no understory to protect, exit routes and equipment use largely contractor directed.

**Selective Removals** protocol: native plant understory areas will be designated as **Priority Native Plant Stands (PNPSs)** to protect in place. Restoration phase contractors will be flagging PNPSs prior to the initiation of Removal phases.

**Assessed Removals Protocol:** trees will be evaluated and flagged for removal by the City of Albany. The City will provide the removals contractor with removal quantities.

<b>Overview</b>	<b>pg 01</b>
<b>Arborist report tables and diagram</b>	<b>pg xx</b>
<b>Phase diagrams</b>	<b>pg xx</b>
<b>Submittals list</b>	<b>pg xx</b>
<b>Technical specifications package</b>	<b>pg xx</b>

*Phase 1 - Restoration (Pilot Phase) - N.I.C.*

## **Phase 2 - Removals (Exterior)**

Selective removals protocol:

Areas B1-2, C1-2, D

General removals

Area A

*Phase 3 - Restoration (Exterior) - N.I.C.*

## **Phase 4 - Removals (Interior)**

Selective removals protocol:

Area F

General removals protocol:

Areas E, G

*Phase 5 - Restoration (Interior) - N.I.C.*

## **Phase 6 - Removals (Assessment)**

Assessed removals protocol:

Areas J, H

*Phase 7 - Restoration (Monarch Support)*

For each area description on the following pages, total trunk counts from Lidar survey and best correlation of arborist tag numbers are included for Contractor reference. Total tree count for each eucalyptus removal area to be VIF by contractor.



- Removals Phase 1: 5.3 ac total
- Removals Phase 2: 2.8 ac total
- Removals Phase 3: 2.4 ac total
- Critical Monarch Zone - N.I.C.

### REMOVALS PHASE OVERVIEW AND NOTES



# EUCALYPTUS REMOVALS PROJECT - NOTES

## GENERAL NOTES

- These notes highlight key requirements of the specifications and provide additional project information. The contractor shall comply with all terms, requirements, and restrictions contained in the plans, specifications, and other contract documents.
- Contractor must familiarize and comply with all project permit conditions.
- Protect all existing features not noted for demolition.
- Preserve and protect in place all utilities unless otherwise noted.
- Legally dispose of all material cleared, grubbed, demolished, or salvaged but not utilized for project or accepted by owner. Stockpile all materials noted on plans for reuse.
- Contractor shall be responsible for construction site security during the construction period.
- The general contractor is responsible for coordinating all of the work performed by his/her subcontractors, without exception.
- The contractor shall identify a responsible contact person, who is an employee of the contractor, and a 24-hour telephone number to call to resolve problems with noise, dust or other construction-related issues.
- All trash must be removed from the site daily to protect wildlife. Remove all litter and construction related debris before leaving the site each day.
- Any deviation from these approved plans shall be re-approved in writing by the O.R. prior to construction.
- Contractor shall provide placement and replacement of construction grade stakes. The stakes are to be adequately identified, located, stabilized, etc.
- Any property line stakes or road monuments disturbed during construction shall be replaced by contractor's engineer and licensed land surveyor.
- Contractor shall notify USA (underground service alert) at 1-800-277-2600 a minimum of 24 hours before beginning underground work for verification of the location of underground utilities.
- Accurate verification as to size, location, and depth of existing underground conduits or facilities shall be the individual contractors responsibility. Plan locations are approximate and for general information only.

## ENVIRONMENTAL PROTECTION NOTES

- IN PROGRESS: Section will list all permit requirements and BMPs for the restoration contractor. These notes will repeat what is held in the specifications package for emphasis and to ensure the information is prominent.

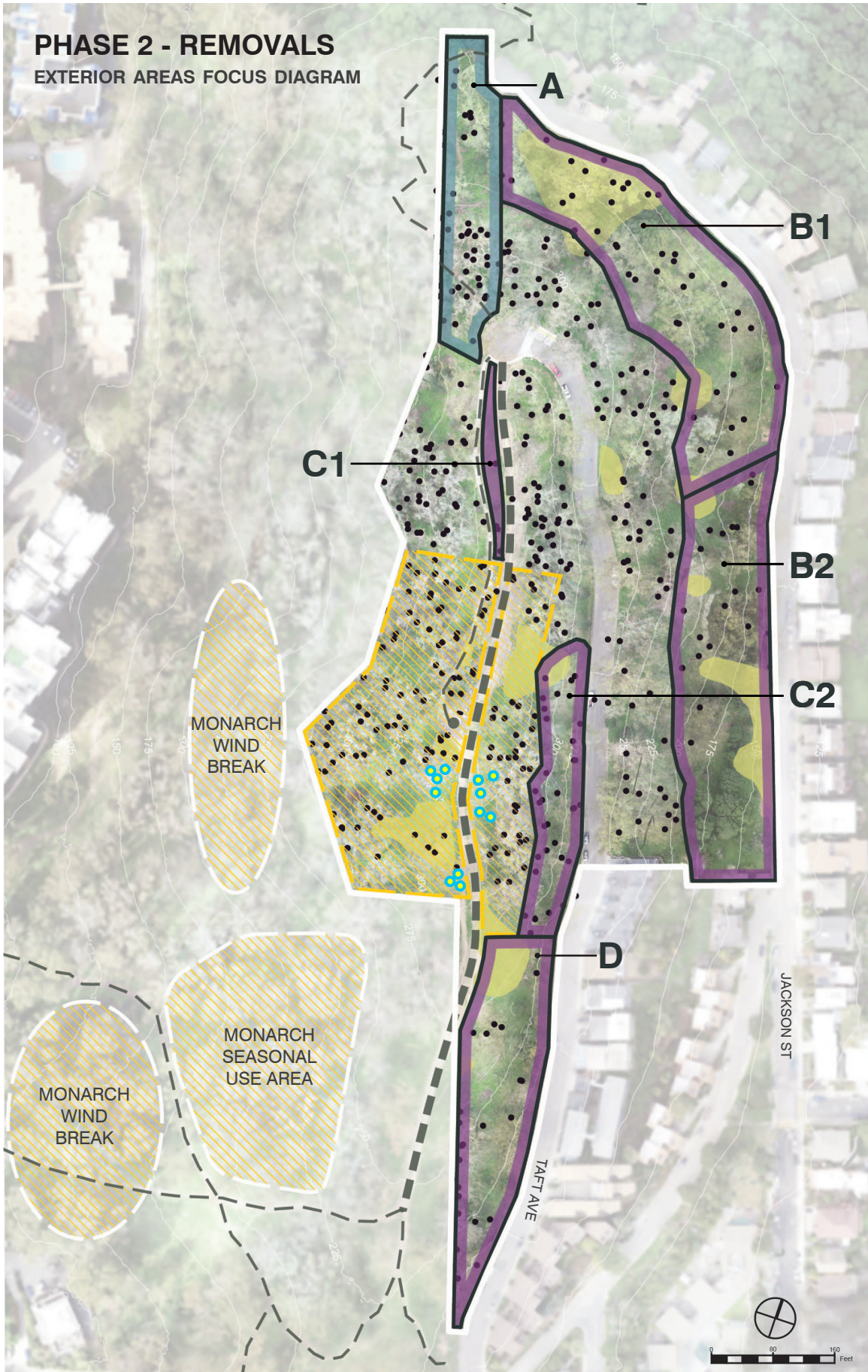
## EROSION CONTROL NOTES

- Erosion and sedimentation control measures shall be installed prior to commencing work and shall not be removed until the work is verified in accordance with the plans and specifications and final approval is received.
- Contractor shall prepare Storm Water Pollution Protection Plan (SWPPP) or Water Pollution Control Plan (WPCP) in accordance with regional requirements prior to construction activities.


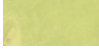



# PHASE 2 - REMOVALS

## EXTERIOR AREAS FOCUS DIAGRAM



### LEGEND

-  Monarch Management Areas
-  PNPS
-  Field Trial Tree Locations

### SELECTIVE REMOVAL ZONES

- Contractor will walk site with O.R. prior to commencing work to review Priority Native Plant Stands (PNPS) and flagged existing plants to protect in place.
- Contractor to confirm designated drag routes indicated as a result of Restoration Phase 1.
- Trees within a PNPS may be cut at field grade or left with up to 4' of trunk as needed to protect adjacent vegetation.
- All Eucalyptus stumps to be treated per specifications.
- See specifications for other requirements.

#### AREA B1: ±45 EUCS

- Arborist #: 329-356, 385-388

#### AREA B2: ±27 EUCS

- Arborist #: 357-384

#### AREA C1: ±6 EUCS

- Arborist #: 9, 12, 81, 85, 128, 129

#### AREA C2: ±26 EUCS

- Arborist #: 64, 102-124

#### AREA D: ±12 EUCS

- Arborist #: 48-67, 125-127, 176-197

### GENERAL REMOVAL ZONES

- No need for understory protection.
- Drag routes per contractor.
- Mulch may be left on site up to a depth of 8".
- Lengths of trunk to be used on site for bioengineering installations. See Construction Documents, Placed Log detail.
- See specifications for other requirements.

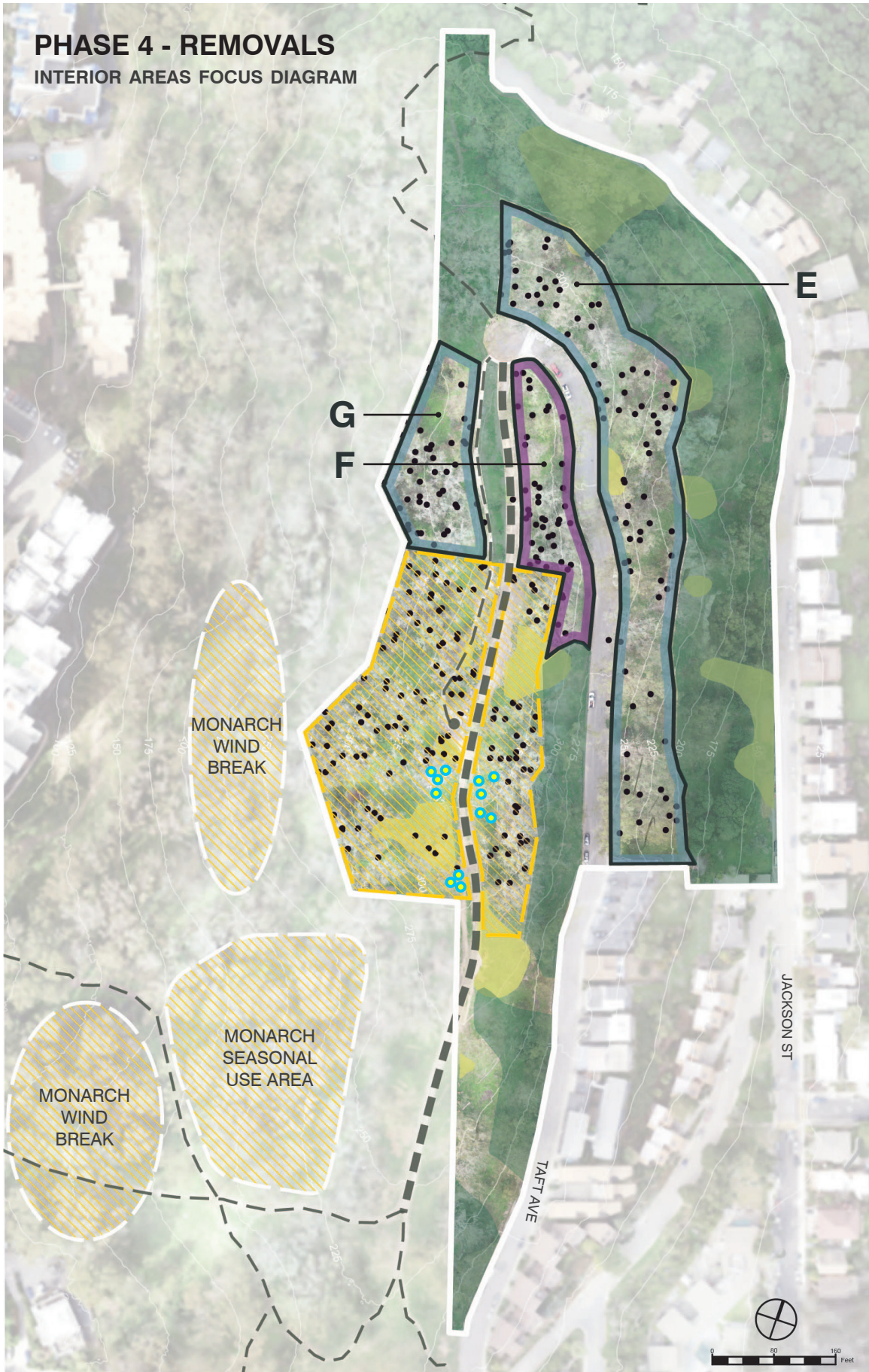
#### AREA A: ±41 EUCS

- Arborist #: 1-13, 261-328




# PHASE 4 - REMOVALS

## INTERIOR AREAS FOCUS DIAGRAM



### LEGEND

-  Monarch Management Areas
-  PNPS
-  Phase 1 & 3 Restoration
-  Field Trial Tree Locations

### SELECTIVE REMOVAL ZONES

- Contractor will walk site with O.R. prior to commencing work to review Priority Native Plant Stands (PNPSs) and flagged existing plants to protect in place.
- Contractor to confirm designated drag routes indicated as a result of Restoration Phases 1 and Phase 3.
- Trees may be cut at field grade or left with up to 4' of trunk as needed to protect adjacent vegetation.
- All Eucalyptus stumps to be treated per specifications.
- See specifications for other requirements.

**AREA F:** ± 45 EUCS  
 • Arborist #: 68-101, 128-139

### GENERAL REMOVAL ZONES

- No need for understory protection.
- Drag routes per contractor.
- Mulch may be left on site up to a depth of 8".
- Lengths of trunk to be used on site for bioengineering installations. See Construction Documents, Placed Log detail.
- See specifications for other requirements.

**AREA E:** ± 81 EUCS  
 • Arborist #: 14-47

**AREA G:** ± 33 EUCS  
 • Arborist #: 198-220






# PHASE 6 - REMOVALS ASSESSMENT



## LEGEND

-  Monarch Management Buffer Area
-  Critical Monarch Zone
-  PNPS
-  Phase 1 & 3 Restoration
-  Field Trial Tree Locations

## ASSESSED REMOVALS

- Trees in the Monarch Management Buffer Area will be assessed for health and potential removal in this phase.
- Trees in the Critical Monarch Zone are N.I.C. The City of Albany will regularly evaluate the trees in this area and remove them as needed, at their discretion. Monarch protection BMPs are to be strictly enforced in the Critical Monarch Zone.

## MONARCH MANAGEMENT BUFFER ZONE: ± 53 EUCS

- Tree removal to be assessed
- Arborist #: 221-230, 140-153

## CRITICAL MONARCH ZONE: ± 66 EUCS

- No tree removal - N.I.C.
- Arborist #: 154-176, 231-250, 389, 390