

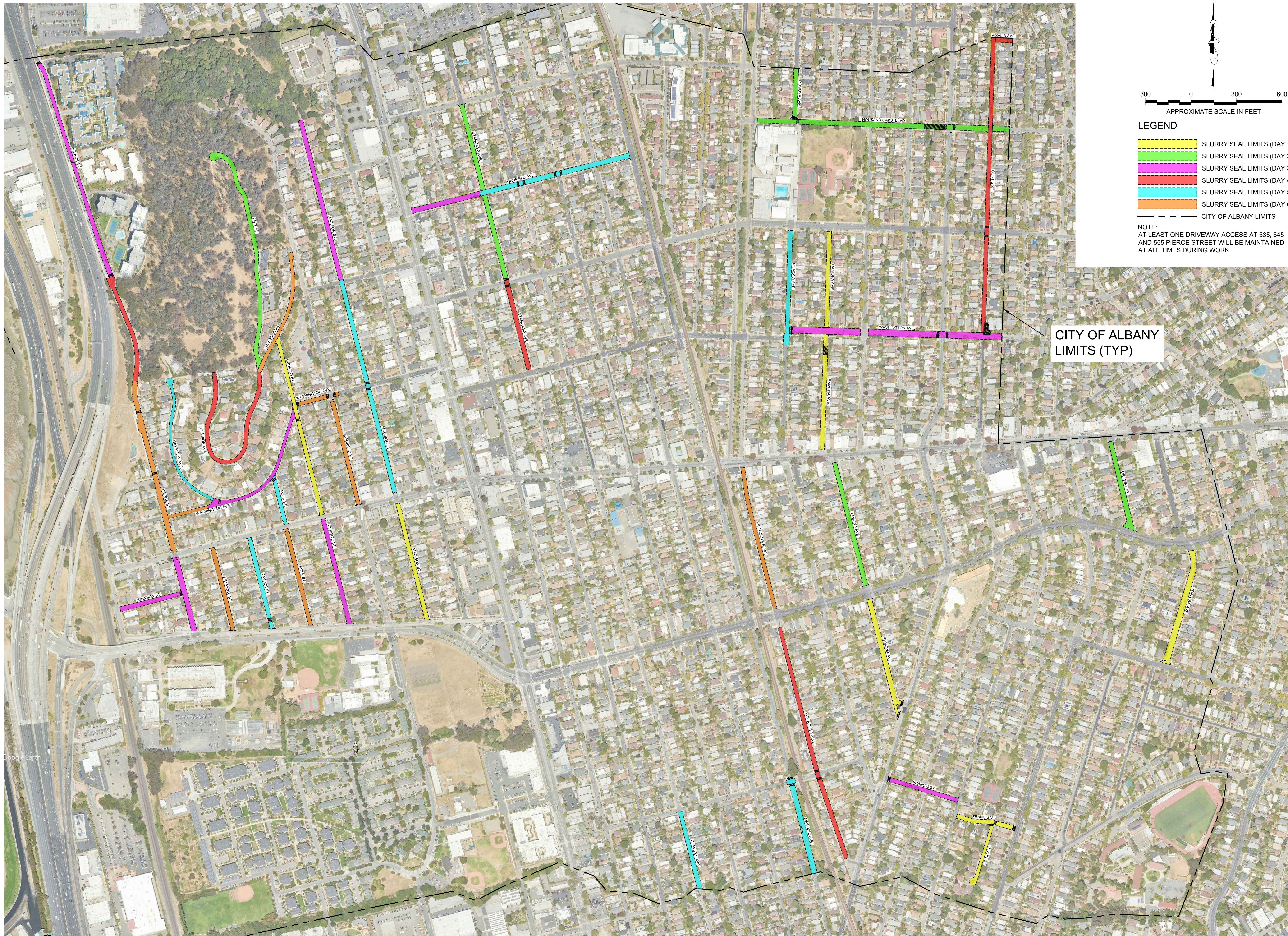
City of Albany
Maintenance Center
540 Cleveland Avenue
Albany, CA 94706
(510) 524-9543

2023 SLURRY SEAL SEQUENCE OVERALL SITE
2023 PAVEMENT MAINTENANCE AND REPAIR PROJECT
CITY OF ALBANY
540 CLEVELAND AVENUE
ALBANY CA, 94706

Submittal / Revision:	

Job No: C23-30
Drawn By: AC
Checked By: DL
Date: SEP 2023

Sheet Number:
C-1
3 of 11



300 0 300 600
APPROXIMATE SCALE IN FEET

- LEGEND**
- SLURRY SEAL LIMITS (DAY 1)
 - SLURRY SEAL LIMITS (DAY 2)
 - SLURRY SEAL LIMITS (DAY 3)
 - SLURRY SEAL LIMITS (DAY 4)
 - SLURRY SEAL LIMITS (DAY 5)
 - SLURRY SEAL LIMITS (DAY 6)
 - CITY OF ALBANY LIMITS

NOTE:
AT LEAST ONE DRIVEWAY ACCESS AT 535, 545
AND 555 PIERCE STREET WILL BE MAINTAINED
AT ALL TIMES DURING WORK.

CITY OF ALBANY
LIMITS (TYP)

File: C:\2023\09\Projects\2023\CV\2023\Site Planning - Red Date: Oct 05, 2023 at 09:58
 Date: 10/05/2023 09:58:58 AM