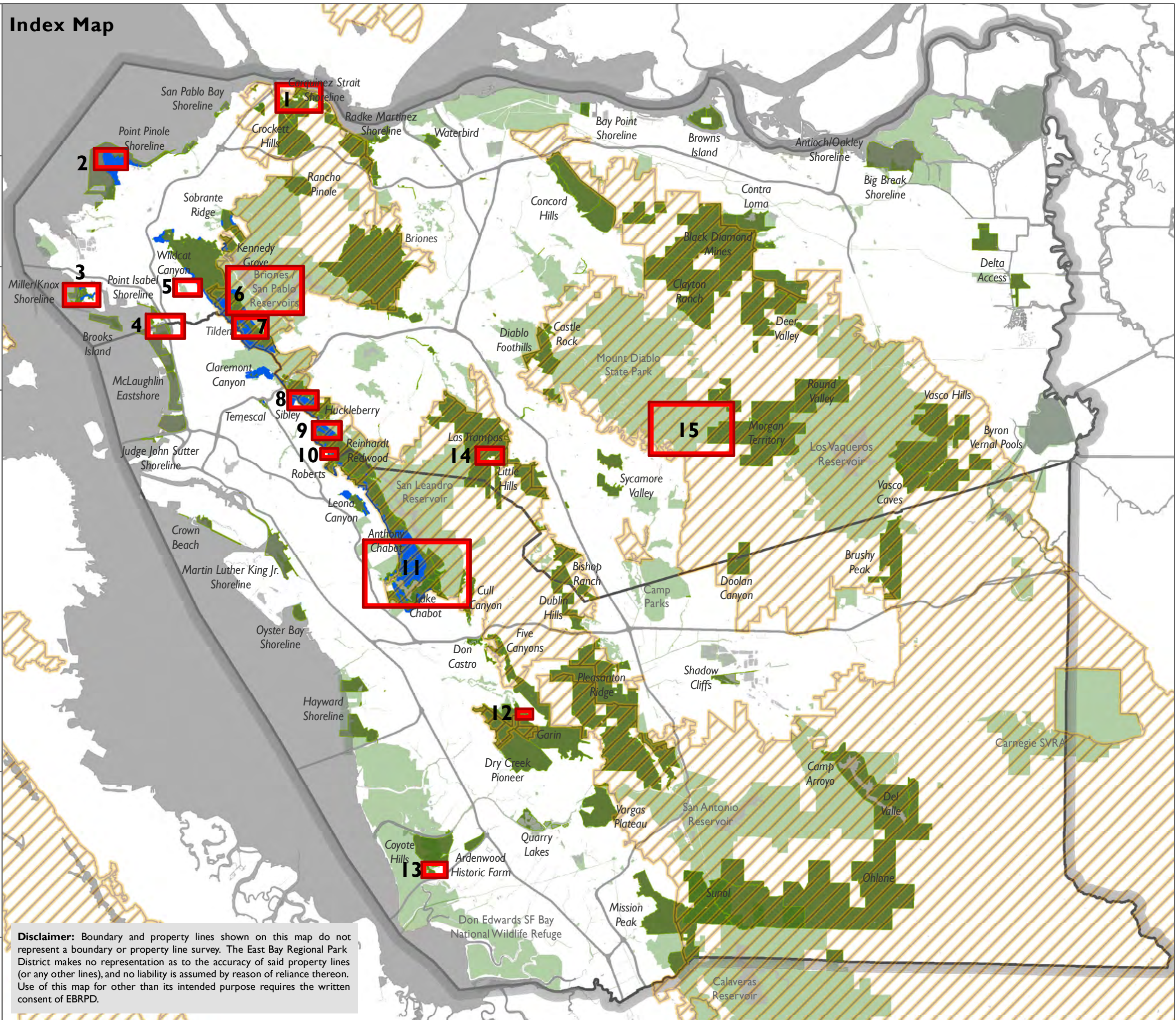


**Index Map**



**TREE DIE-OFF WITHIN  
RTA vs. SRA  
April 2021**



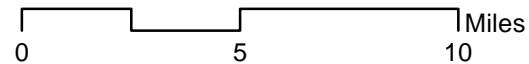
**Detailed Maps**

- Map 1** - Carquinez Strait Shoreline
- Map 2** - Point Pinole Shoreline
- Map 3** - Miller / Knox Shoreline
- Map 4** - Albany Hill Park (Non-EBRPD)
- Map 5** - Hillside Park (Non-EBRPD)
- Map 6** - Briones / San Pablo Reservoirs (Non-EBRPD)
- Map 7** - Tilden
- Map 8** - Sibley
- Map 9** - Reinhardt Redwood (Non- EBRPD)
- Map 10** - Roberts
- Map 11** - Anthony Chabot / Lake Chabot
- Map 12** - Garin
- Map 13** - Dumbarton Quarry Campground on the Bay
- Map 14** - Las Trampas
- Map 15** - Mount Diablo (Non-EBRPD)

*Note: All maps are set at different scales.*

**Abbreviations:**

- RTA:** Recommended Treatment Area
- SRA:** State Responsibility Area
- FEMA:** Federal Emergency Management Agency
- HMGP:** Hazard Mitigation Grant Program
- PDM:** Pre-Disaster Mitigation Grant



**Disclaimer:** Boundary and property lines shown on this map do not represent a boundary or property line survey. The East Bay Regional Park District makes no representation as to the accuracy of said property lines (or any other lines), and no liability is assumed by reason of reliance thereon. Use of this map for other than its intended purpose requires the written consent of EBRPD.

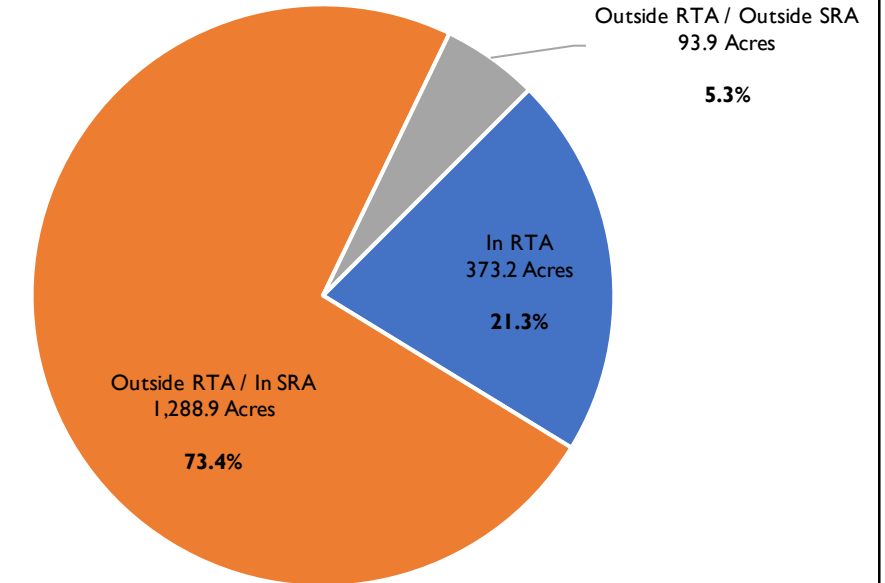
**Tree Die-off within Recommended Treatment Areas (RTA) vs. State Responsibility Areas (SRA)**  
Acreage Calculations - April 2021

MAP #	PARK	OWNER OR OPERATOR	ACRES							
			DIE-OFF	RTA	SRA	NOT IN RTA/ IN SRA	NOT IN RTA/ NOT IN SRA	FEMA GRANT	HMGP GRANT	PDM GRANT
1	Carquinez Strait Shoreline	EBRPD	25.1	0.0	25.1	25.1	0.0	0.0	0.0	0.0
1	Crockett Hills	EBRPD	0.4	0.0	0.4	0.4	0.0	0.0	0.0	0.0
2	Point Pinole Shoreline	EBRPD	14.1	13.3	0.0	0.0	0.8	0.0	0.0	0.0
3	Miller / Knox Shoreline	EBRPD	32.6	6.1	0.0	0.0	26.5	0.0	6.1	0.0
3	Nickol Knoll (Non-EBRPD)	EBMUD	1.5	0.0	0.0	0.0	1.5	0.0	0.0	0.0
3	BNSF Railway Property (Non-EBRPD)	BNSF Railway	0.1	0.0	0.0	0.0	0.1	0.0	0.0	0.0
3	City of Richmond Property (Non-EBRPD)	City of Richmond	6.3	0.0	0.0	0.0	6.3	0.0	0.0	0.0
4	Albany Hill Park (Non-EBRPD)	Common Area of Tract 3528	38.4	0.0	0.0	0.0	38.4	0.0	0.0	0.0
5	Hillside Park (Non-EBRPD)	City of El Cerrito	10.1	0.0	0.0	0.0	10.1	0.0	0.0	0.0
6	Briones / San Pablo Reservoirs (Non-EBRPD)	EBMUD	97.2	0.0	97.2	97.2	0.0	0.0	0.0	0.0
7	Tilden	EBRPD	62.3	9.6	62.3	52.7	0.0	0.0	0.0	0.0
8	Sibley	EBRPD	42.7	20.4	42.7	22.3	0.0	9.2	1.9	0.0
8	Huckleberry	EBRPD	0.4	0.0	0.4	0.4	0.0	0.0	0.0	0.0
8	Round Top Reservoir (Non-EBRPD)	EBMUD	0.1	0.1	0.1	0.0	0.0	0.0	0.0	0.0
9	Reinhardt Redwood	EBRPD	117.0	67.6	117.0	49.4	0.0	32.3	7.8	0.0
9	San Leandro Reservoir (Non-EBRPD)	EBMUD	22.2	0.0	22.2	22.2	0.0	0.0	0.0	0.0
10	Roberts	EBRPD	2.1	0.0	2.1	2.1	0.0	0.0	0.0	0.0
11	Anthony Chabot	EBRPD	529.7	234.6	529.7	295.1	0.0	18.7	0.7	0.0
11	Lake Chabot	EBRPD	102.2	21.5	102.2	80.7	0.0	0.0	0.2	0.0
11	San Leandro Reservoir (Non-EBRPD)	EBMUD	442.8	0.0	442.8	442.8	0.0	0.0	0.0	0.0
12	Garin	EBRPD	2.1	0.0	0.0	0.0	2.1	0.0	0.0	0.0
13	Dumbarton Quarry Campground on the Bay	EBRPD	7.2	0.0	0.0	0.0	7.2	0.0	0.0	0.0
13	Coyote Hills	EBRPD	0.1	0.0	0.0	0.0	0.1	0.0	0.0	0.0
13	ACWD Property	ACWD	0.8	0.0	0.0	0.0	0.8	0.0	0.0	0.0
14	Las Trampas	EBRPD	11.5	0.0	11.5	11.5	0.0	0.0	0.0	0.0
15	Mount Diablo State Park (Non-EBRPD)	State of CA	106.2	0.0	106.2	106.2	0.0	0.0	0.0	0.0
15	Curry Canyon Ranch (Non-EBRPD)	Save Mount Diablo	80.8	0.0	80.8	80.8	0.0	0.0	0.0	0.0
<b>TOTALS:</b>			<b>1,756.0</b>	<b>373.2</b>	<b>1,642.7</b>	<b>1,288.9</b>	<b>93.9</b>	<b>60.2</b>	<b>16.7</b>	<b>0.0</b>

Die-off acreages based on each detailed map and split by park name

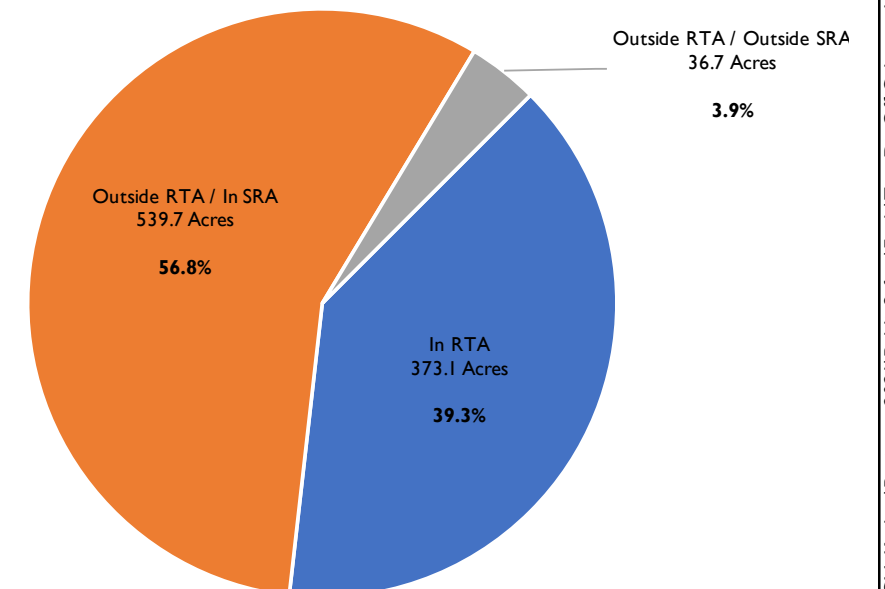
**ALL MAPPED DIE-OFF**

Total: 1,756.0 Acres




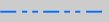




**MAPPED DIE-OFF ON EBRPD PROPERTY**

Total: 949.5 Acres



# Map 4

-  Mapped Die-off
-  Regional Trail
-  EBRPD Roads or Trails
-  Streams or Shoreline
-  Park Entrance
-  Staging Area

