



DISH Wireless L.L.C. SITE ID:

**SFSFO00939A**

DISH Wireless L.L.C. SITE ADDRESS:

**1035 SAN PABLO AVE  
ALBANY, CA 94706**

**SCOPE OF WORK**

THIS IS NOT AN ALL INCLUSIVE LIST. CONTRACTOR SHALL UTILIZE SPECIFIED EQUIPMENT PART OR ENGINEER APPROVED EQUIVALENT. CONTRACTOR SHALL VERIFY ALL NEEDED EQUIPMENT TO PROVIDE A FUNCTIONAL SITE. THE PROJECT GENERALLY CONSISTS OF THE FOLLOWING:

- ROOFTOP SCOPE OF WORK:**
- INSTALL (4) PROPOSED PANEL ANTENNAS
  - INSTALL PROPOSED JUMPERS
  - INSTALL (8) PROPOSED RRUs
  - INSTALL (2) PROPOSED OVER VOLTAGE PROTECTION DEVICE (OVP) (1 FOR ALPHA SECTOR AND 1 FOR GAMMA SECTOR)
  - INSTALL PROPOSED CABLE TRAY
  - INSTALL (1) POWER AND FIBER TRUNK TO GAMMA SECTOR
  - INSTALL (1) HYBRID CABLE TO ALPHA AND BETA SECTORS
  - INSTALL (1) PROPOSED METAL PLATFORM WITH H-FRAME
  - INSTALL (1) PROPOSED EQUIPMENT CABINET
  - INSTALL (1) PROPOSED POWER CONDUIT
  - INSTALL (1) PROPOSED TELCO CONDUIT
  - INSTALL (1) PROPOSED NEMA 3 TELCO-FIBER BOX
  - INSTALL (1) PROPOSED GPS UNIT
  - INSTALL (1) PROPOSE FIBER NID

**SITE INFORMATION**

PROPERTY OWNER: DALLAS ALLEN  
 SITE ADDRESS: 1035 SAN PABLO AVE  
 ALBANY, CA 94706

TOWER TYPE: ROOFTOP

COUNTY: ALAMEDA COUNTY

LATITUDE (NAD 83): 37.88535

LONGITUDE (NAD 83): -122.29705

ZONING JURISDICTION: CITY OF ALBANY

ZONING DISTRICT: SPC-SAN PABLO COMMERCIAL

PARCEL NUMBER: 65-2662-49-1

OCCUPANCY GROUP: U

CONSTRUCTION TYPE: II-B

POWER COMPANY: PG&E

TELEPHONE COMPANY: AT&T

**PROJECT DIRECTORY**

APPLICANT: DISH Wireless L.L.C.  
 5701 SOUTH SANTA FE DRIVE  
 LITTLETON, CO 80120

SITE DESIGNER: MODUS, LLC  
 240 STOCKTON ST., 3RD FLOOR  
 SAN FRANCISCO, CA 94108  
 (415) 989-1102

SITE ACQUISITION: MODUS, LLC  
 (415) 989-1102

CONSTRUCTION MANAGER: DANIEL TAYLOR  
 (714) 951-1738



5701 SOUTH SANTA FE DRIVE  
LITTLETON, CO 80120



MODUS, LLC  
240 STOCKTON ST., 3RD FLOOR  
SAN FRANCISCO, CA  
94108

**SITE PHOTO**



**DIRECTIONS**

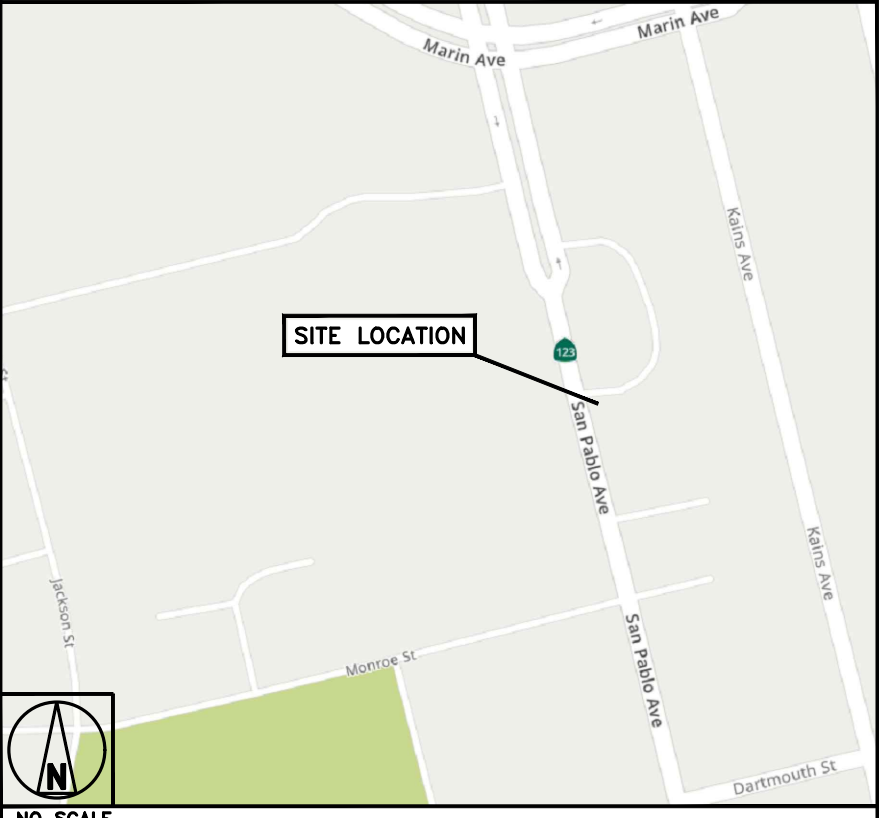
- DIRECTIONS FROM SFO AIRPORT:**
- TAKE THE I-380 W RAMP TOWARD SAN BRUNO/1-280
  - MERGE ONTO US-101 N TOWARD SAN FRANCISCO
  - MERGE ONTO I-80 E VIA EXIT 433B TOWARD BAY BRIDGE
  - TAKE THE UNIVERSITY AVE EXIT, EXIT 11, TOWARD BERKELEY
  - KEEP RIGHT TO TAKE THE RAMP TOWARD FRONTAGE ROAD
  - STAY STRAIGHT TO GO ONTO EASTSHORE HWY
  - TURN RIGHT ONTO GILMAN ST
  - TURN LEFT ONTO SAN PABLO AVE/CA-123

**CALIFORNIA - CODE COMPLIANCE**

ALL WORK SHALL BE PERFORMED AND MATERIALS INSTALLED IN ACCORDANCE WITH THE CURRENT EDITIONS OF THE FOLLOWING CODES AS ADOPTED BY THE LOCAL GOVERNING AUTHORITIES. NOTHING IN THESE PLANS IS TO BE CONSTRUED TO PERMIT WORK NOT CONFORMING TO THESE CODES:

CODE TYPE	CODE
BUILDING	2019 CALIFORNIA BUILDING CODE (CBC)/2018 IBC
MECHANICAL	2019 CALIFORNIA MECHANICAL CODE (CMC)/2018 UMC
ELECTRICAL	2019 CALIFORNIA ELECTRICAL CODE (CEC)/2017 NEC

**VICINITY MAP**



**SHEET INDEX**

SHEET NO.	SHEET TITLE
T-1	TITLE SHEET
A-1	OVERALL SITE PLAN
A-2	ENLARGED BUILDING PLAN
A-3	ANTENNA PLAN, ELEVATION AND SCHEDULE
A-4	NORTH AND WEST ELEVATIONS
A-5	EQUIPMENT PLATFORM AND H-FRAME DETAILS
GN-1	LEGEND AND ABBREVIATIONS

UNDERGROUND SERVICE ALERT  
 UTILITY NOTIFICATION CENTER OF CALIFORNIA  
 (800) 642-2444  
 WWW.CALIFORNIA811.ORG  
 CALL 2-14 WORKING DAYS UTILITY NOTIFICATION PRIOR TO CONSTRUCTION

**GENERAL NOTES**

THE FACILITY IS UNMANNED AND NOT FOR HUMAN HABITATION. A TECHNICIAN WILL VISIT THE SITE AS REQUIRED FOR ROUTINE MAINTENANCE. THE PROJECT WILL NOT RESULT IN ANY SIGNIFICANT DISTURBANCE OR EFFECT ON DRAINAGE, NO SANITARY SEWER SERVICE, POTABLE WATER, OR TRASH DISPOSAL IS REQUIRED AND NO COMMERCIAL SIGNAGE IS PROPOSED.

11"x17" PLOT WILL BE HALF SCALE UNLESS OTHERWISE NOTED

CONTRACTOR SHALL VERIFY ALL PLANS, EXISTING DIMENSIONS, AND CONDITIONS ON THE JOB SITE, AND SHALL IMMEDIATELY NOTIFY THE ENGINEER IN WRITING OF ANY DISCREPANCIES BEFORE PROCEEDING WITH THE WORK.

IT IS A VIOLATION OF LAW FOR ANY PERSON, UNLESS THEY ARE ACTING UNDER THE DIRECTION OF A LICENSED PROFESSIONAL ENGINEER, TO ALTER THIS DOCUMENT.

DRAWN BY:	CHECKED BY:	APPROVED BY:
CLP	SH	LJB
RFDS REV #: 2		10/21/2021

**ZONING DOCUMENTS**

REV	DATE	DESCRIPTION
A	10/14/2021	ISSUED FOR REVIEW
B	12/10/2021	90% ZD

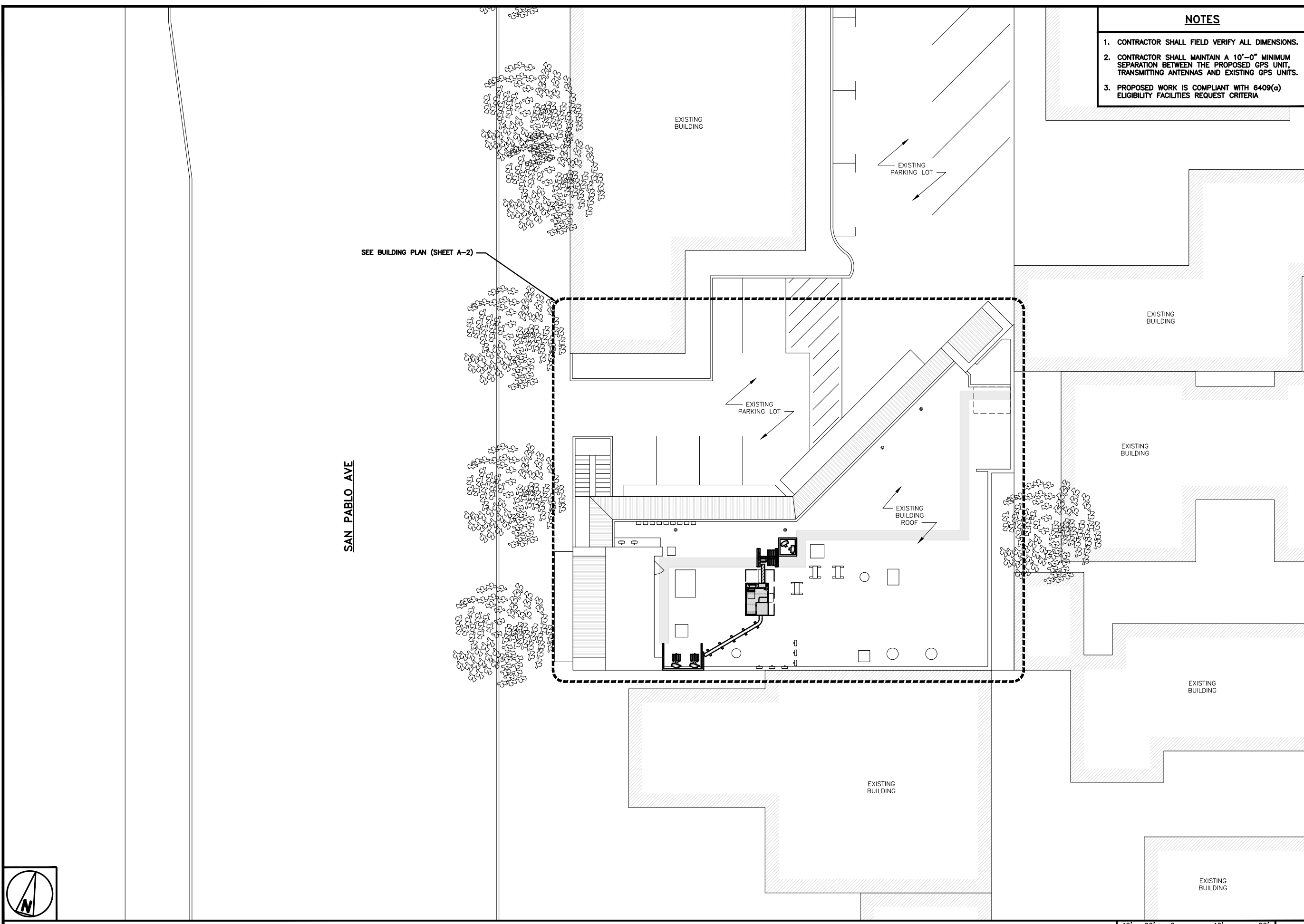
A&E PROJECT NUMBER  
**SFSFO00939A**

DISH Wireless L.L.C.  
 PROJECT INFORMATION

**SFSFO00939A**  
**1035 SAN PABLO AVE**  
**ALBANY, CA 94706**

SHEET TITLE  
**TITLE SHEET**

SHEET NUMBER  
**T-1**



- NOTES**
1. CONTRACTOR SHALL FIELD VERIFY ALL DIMENSIONS.
  2. CONTRACTOR SHALL MAINTAIN A 10'-0" MINIMUM SEPARATION BETWEEN THE PROPOSED GPS UNIT, TRANSMITTING ANTENNAS AND EXISTING GPS UNITS.
  3. PROPOSED WORK IS COMPLIANT WITH 6409(c) ELIGIBILITY FACILITIES REQUEST CRITERIA

**dish**  
wireless.

5701 SOUTH SANTA FE DRIVE  
LITTLETON, CO 80120

**MODUS**

MODUS, LLC  
240 STOCKTON ST., 3RD FLOOR  
SAN FRANCISCO, CA  
94108

IT IS A VIOLATION OF LAW FOR ANY PERSON, UNLESS THEY ARE ACTING UNDER THE DIRECTION OF A LICENSED PROFESSIONAL ENGINEER, TO ALTER THIS DOCUMENT.

DRAWN BY: CLP  
CHECKED BY: SH  
APPROVED BY: LJB

RFDS REV #: 2 10/21/2021

**ZONING DOCUMENTS**

SUBMITTALS

REV	DATE	DESCRIPTION
A	10/14/2021	ISSUED FOR REVIEW
B	12/10/2021	90% ZD

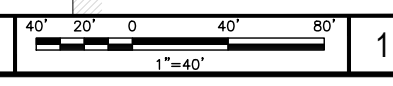
A&E PROJECT NUMBER  
SFSF000939A

DISH Wireless L.L.C.  
PROJECT INFORMATION

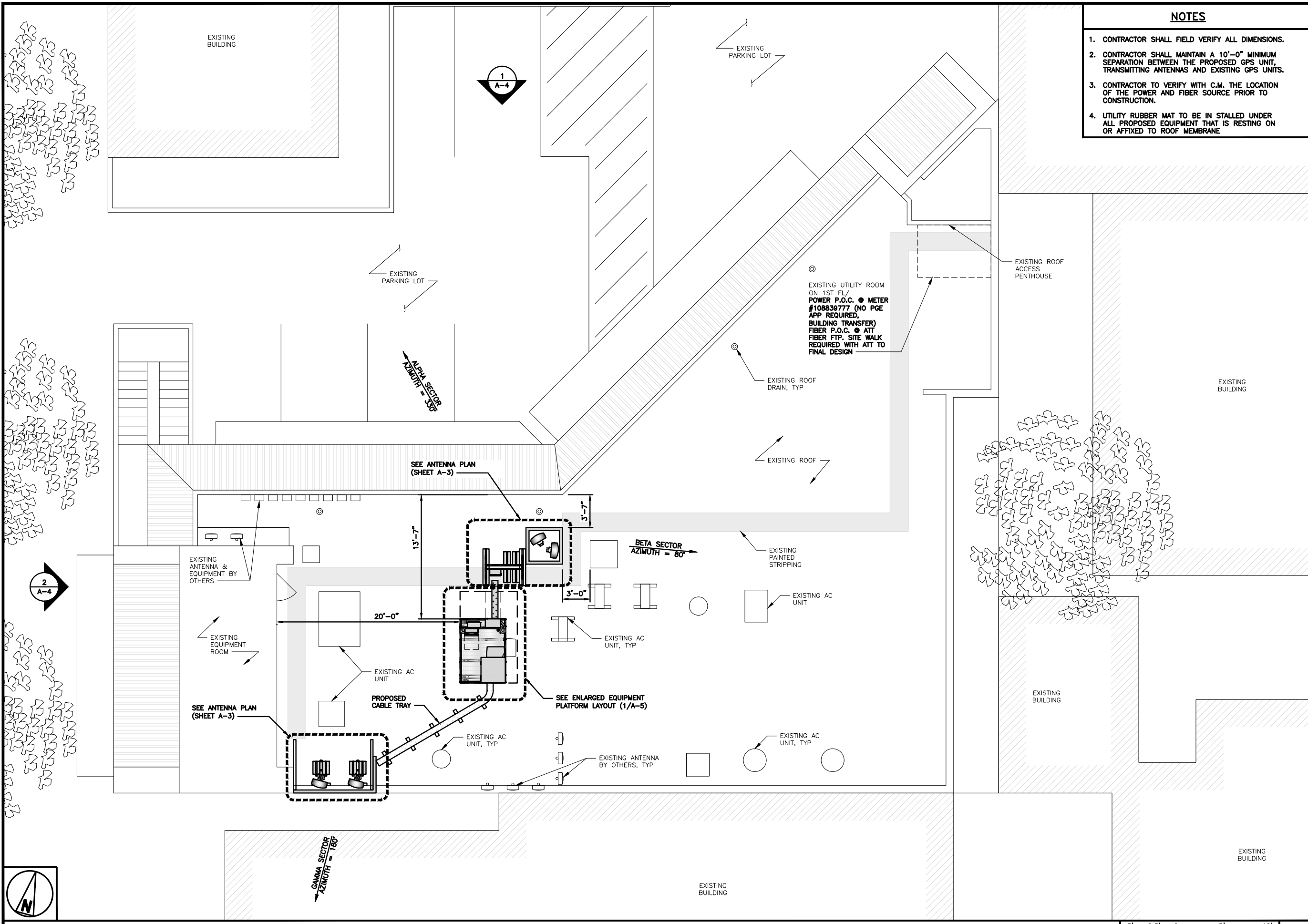
SFSF000939A  
1035 SAN PABLO AVE  
ALBANY, CA 94706

SHEET TITLE  
OVERALL  
SITE PLAN

SHEET NUMBER  
**A-1**



**OVERALL SITE PLAN**



- NOTES**
1. CONTRACTOR SHALL FIELD VERIFY ALL DIMENSIONS.
  2. CONTRACTOR SHALL MAINTAIN A 10"-0" MINIMUM SEPARATION BETWEEN THE PROPOSED GPS UNIT, TRANSMITTING ANTENNAS AND EXISTING GPS UNITS.
  3. CONTRACTOR TO VERIFY WITH C.M. THE LOCATION OF THE POWER AND FIBER SOURCE PRIOR TO CONSTRUCTION.
  4. UTILITY RUBBER MAT TO BE IN STALLED UNDER ALL PROPOSED EQUIPMENT THAT IS RESTING ON OR AFFIXED TO ROOF MEMBRANE

**dish wireless.**

5701 SOUTH SANTA FE DRIVE  
LITTLETON, CO 80120

MODUS, LLC  
240 STOCKTON ST., 3RD FLOOR  
SAN FRANCISCO, CA  
94108

IT IS A VIOLATION OF LAW FOR ANY PERSON, UNLESS THEY ARE ACTING UNDER THE DIRECTION OF A LICENSED PROFESSIONAL ENGINEER, TO ALTER THIS DOCUMENT.

DRAWN BY:	CHECKED BY:	APPROVED BY:
CLP	SH	LJB
RFDS REV #:	2	10/21/2021

**ZONING DOCUMENTS**

SUBMITTALS		
REV	DATE	DESCRIPTION
A	10/14/2021	ISSUED FOR REVIEW
B	12/10/2021	90% ZD

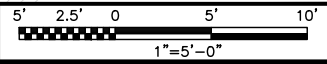
A&E PROJECT NUMBER  
**SFSF000939A**

DISH Wireless L.L.C.  
PROJECT INFORMATION  
**SFSF000939A**  
1035 SAN PABLO AVE  
ALBANY, CA 94706

SHEET TITLE  
**ENLARGED BUILDING PLAN**

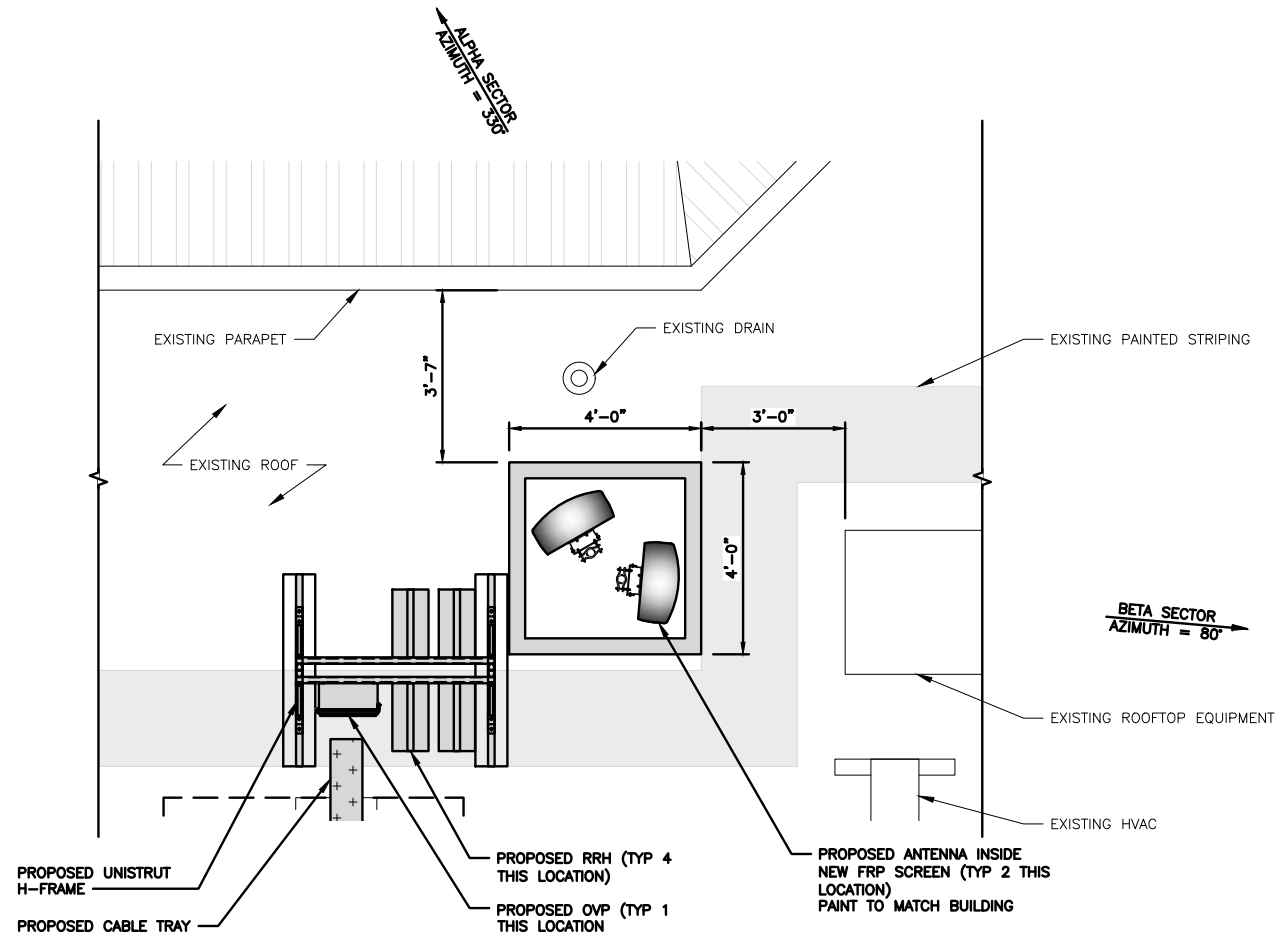
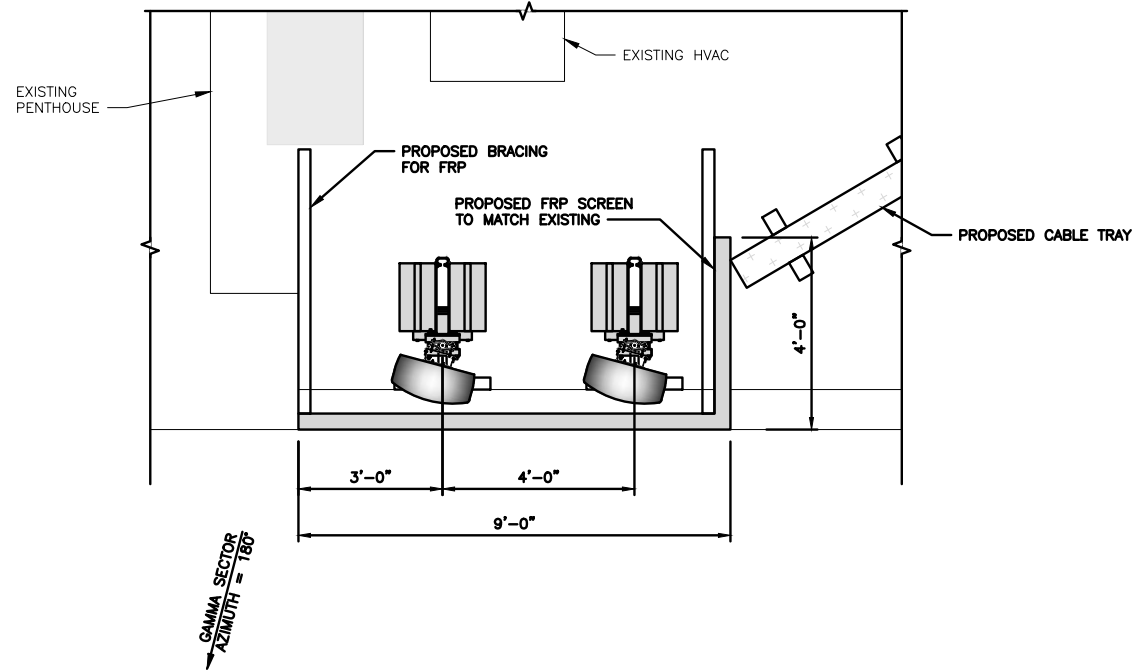
SHEET NUMBER  
**A-2**

**ENLARGED BUILDING PLAN**

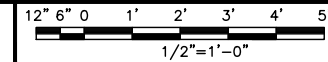


**NOTES**

1. CONTRACTOR SHALL FIELD VERIFY ALL DIMENSIONS.
2. ANTENNA AND MW DISH SPECIFICATIONS REFER TO ANTENNA SCHEDULE AND TO FINAL CONSTRUCTION RFDS FOR ALL RF DETAILS



**ANTENNA PLANS**



1

IT IS A VIOLATION OF LAW FOR ANY PERSON, UNLESS THEY ARE ACTING UNDER THE DIRECTION OF A LICENSED PROFESSIONAL ENGINEER, TO ALTER THIS DOCUMENT.

DRAWN BY: CLP  
 CHECKED BY: SH  
 APPROVED BY: LJB

RFDS REV #: 2 10/21/2021

**ZONING DOCUMENTS**

**SUBMITTALS**

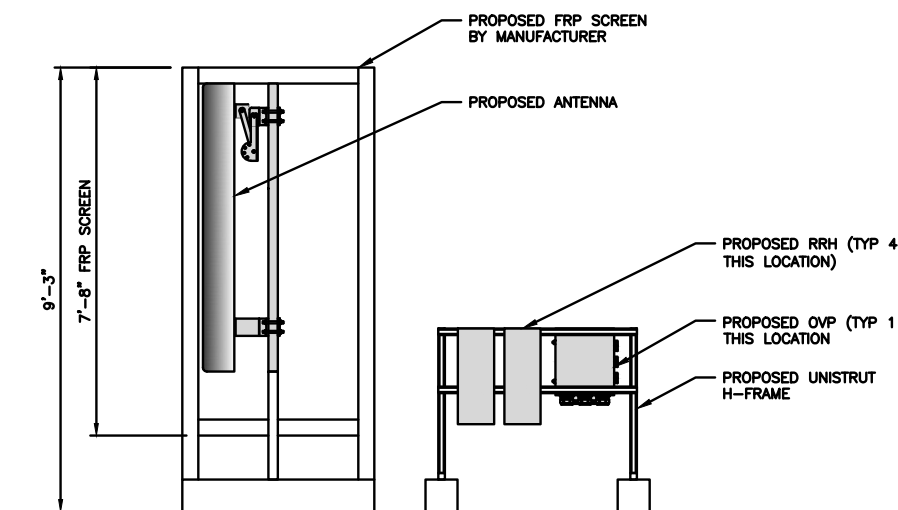
REV	DATE	DESCRIPTION
A	10/14/2021	ISSUED FOR REVIEW
B	12/10/2021	90% ZD

A&E PROJECT NUMBER  
 SFSF000939A

DISH Wireless L.L.C.  
 PROJECT INFORMATION  
 SFSF000939A  
 1035 SAN PABLO AVE  
 ALBANY, CA 94706

SHEET TITLE  
 ANTENNA PLAN,  
 ELEVATION AND SCHEDULE

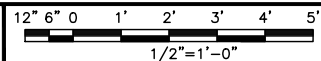
SHEET NUMBER  
**A-3**



SECTOR	POSITION	ANTENNA						TRANSMISSION CABLE	
		EXISTING OR PROPOSED	MANUFACTURER - MODEL NUMBER	TECHNOLOGY	SIZE (HxW)	AZIMUTH	RAD CENTER	FEED LINE TYPE AND LENGTH	
ALPHA	A1	PROPOSED	ANTENNA - FUTURE/TBD	5G	72.0" x 20.0"	330°	43'-5"	(1) HYBRID CABLE (15' LONG)	
	-	-			-	-	-		
BETA	B1	PROPOSED		5G	72.0" x 20.0"	80°	43'-5"		
	-	-			-	-	-		
GAMMA	C1	PROPOSED		5G	72.0" x 20.0"	180°	43'-5"		(1) POWER & (1) FIBER CABLE (35' LONG)
	C2	PROPOSED			72.0" x 20.0"	180°	43'-5"		

SECTOR	POSITION	RRH		NOTES
		MANUFACTURER - MODEL NUMBER	TECHNOLOGY	
ALPHA	A1	RADIO - FUTURE/TBD	5G	1. CONTRACTOR TO REFER TO FINAL CONSTRUCTION RFDS FOR ALL RF DETAILS. 2. ANTENNA AND RRH MODELS MAY CHANGE DUE TO EQUIPMENT AVAILABILITY. ALL EQUIPMENT CHANGES MUST BE APPROVED AND REMAIN IN COMPLIANCE WITH THE PROPOSED DESIGN AND STRUCTURAL ANALYSES.
	A2			
	A2			
BETA	B1		5G	
	B1			
	B2			
GAMMA	C1	5G		
	C1			
	C2			
	C2			

**ANTENNA ELEVATION**



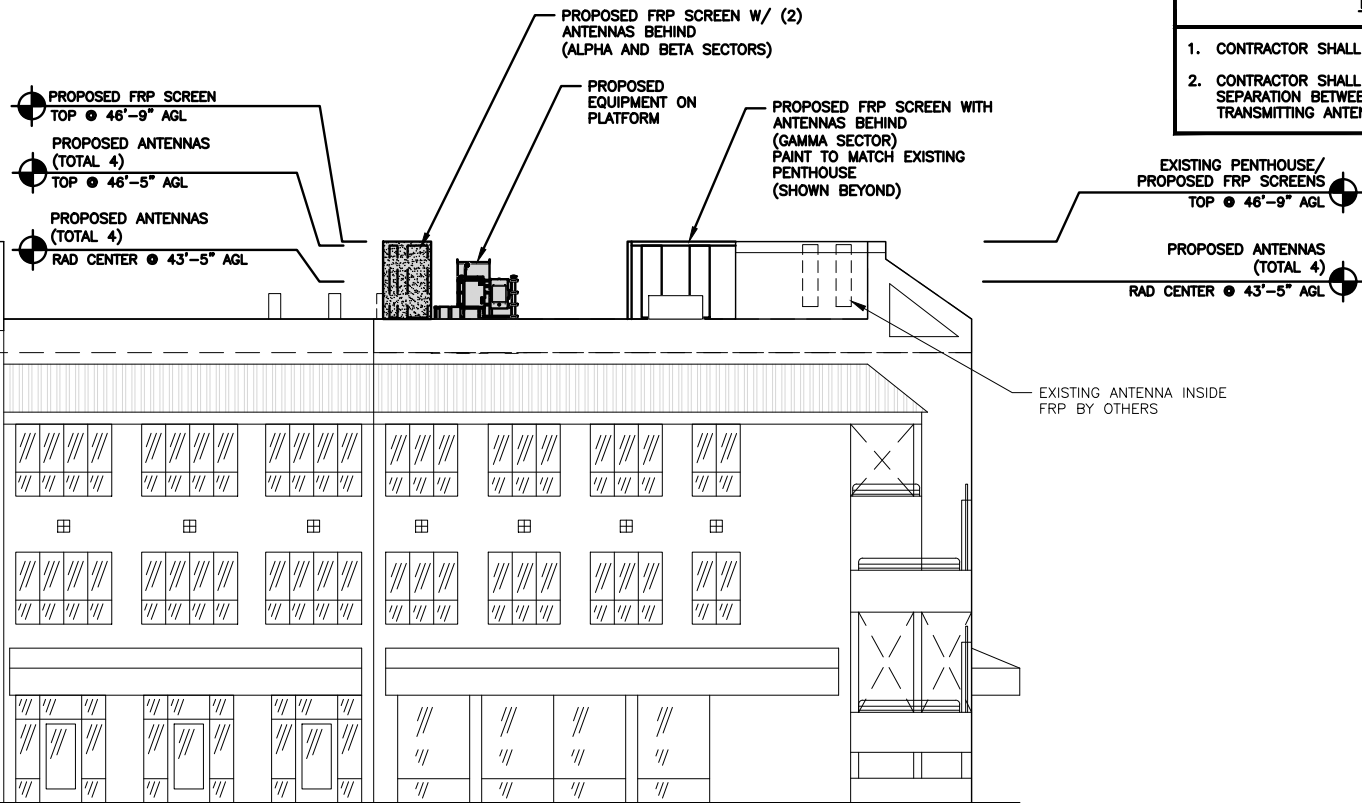
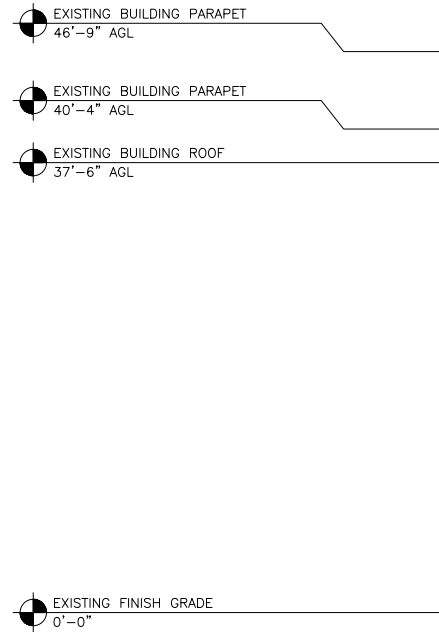
2

**ANTENNA SCHEDULE**

NO SCALE

3





**NOTES**

1. CONTRACTOR SHALL FIELD VERIFY ALL DIMENSIONS.
2. CONTRACTOR SHALL MAINTAIN A 10'-0" MINIMUM SEPARATION BETWEEN THE PROPOSED GPS UNIT, TRANSMITTING ANTENNAS AND EXISTING GPS UNITS.

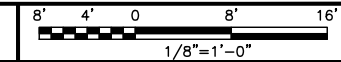


5701 SOUTH SANTA FE DRIVE  
LITTLETON, CO 80120



MODUS, LLC  
240 STOCKTON ST., 3RD FLOOR  
SAN FRANCISCO, CA  
94108

**BUILDING NORTH ELEVATION**



1

**NOTES**

1. CONTRACTOR SHALL FIELD VERIFY ALL DIMENSIONS.
2. CONTRACTOR SHALL MAINTAIN A 10'-0" MINIMUM SEPARATION BETWEEN THE PROPOSED GPS UNIT, TRANSMITTING ANTENNAS AND EXISTING GPS UNITS.

IT IS A VIOLATION OF LAW FOR ANY PERSON, UNLESS THEY ARE ACTING UNDER THE DIRECTION OF A LICENSED PROFESSIONAL ENGINEER, TO ALTER THIS DOCUMENT.

DRAWN BY:	CHECKED BY:	APPROVED BY:
CLP	SH	LJB

RFDS REV #: 2 10/21/2021

**ZONING DOCUMENTS**

**SUBMITTALS**

REV	DATE	DESCRIPTION
A	10/14/2021	ISSUED FOR REVIEW
B	12/10/2021	90% ZD

A&E PROJECT NUMBER  
SFSF000939A

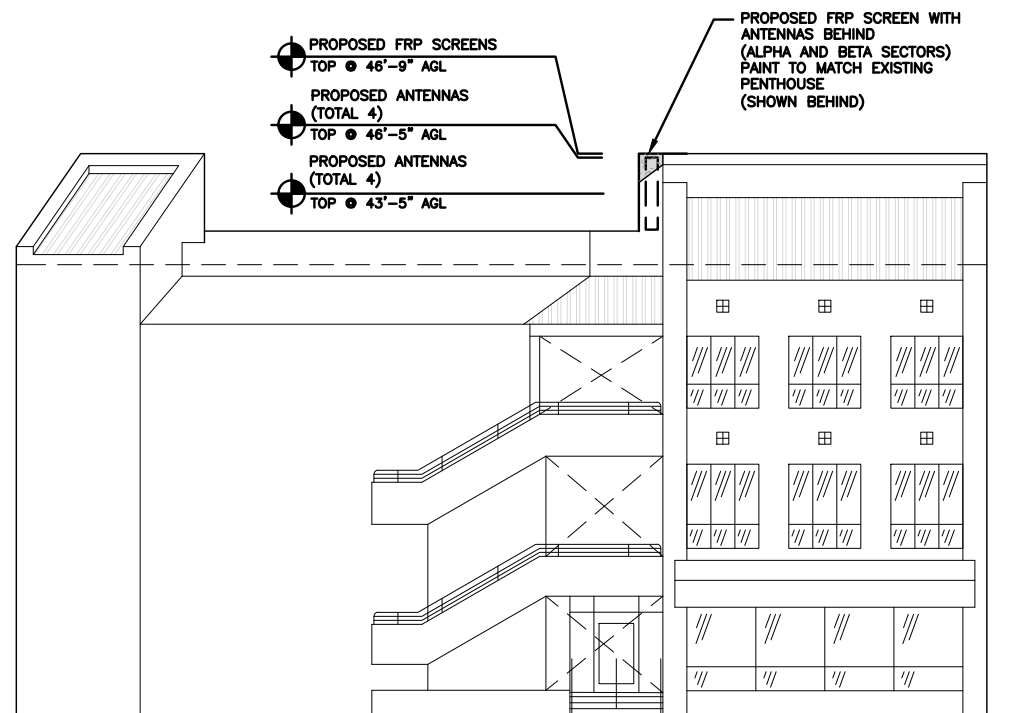
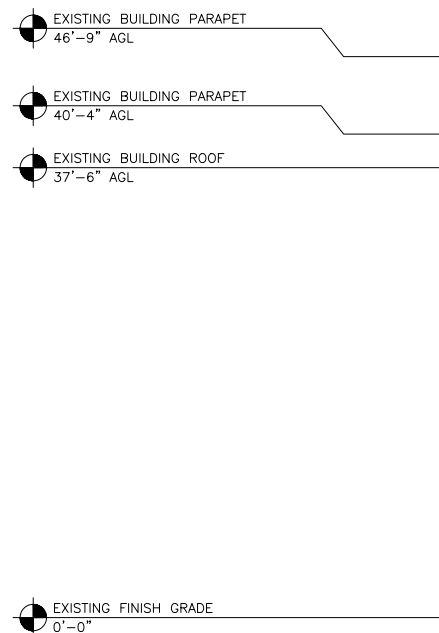
DISH Wireless L.L.C.  
PROJECT INFORMATION

SFSF000939A  
1035 SAN PABLO AVE  
ALBANY, CA 94706

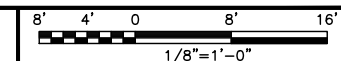
SHEET TITLE  
NORTH AND WEST  
ELEVATIONS

SHEET NUMBER

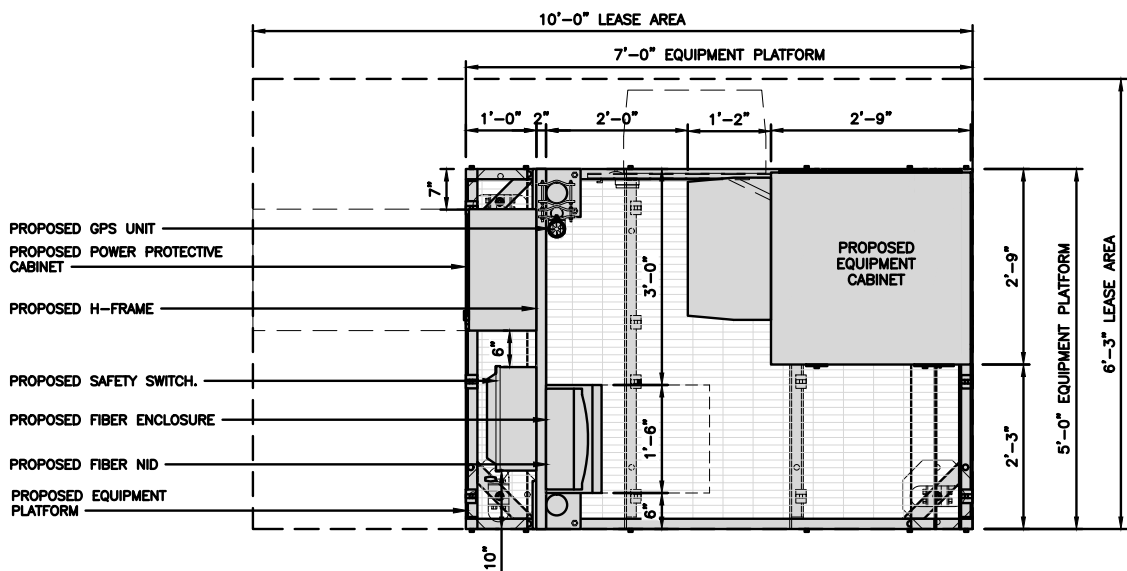
**A-4**



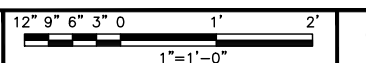
**BUILDING WEST ELEVATION**



2



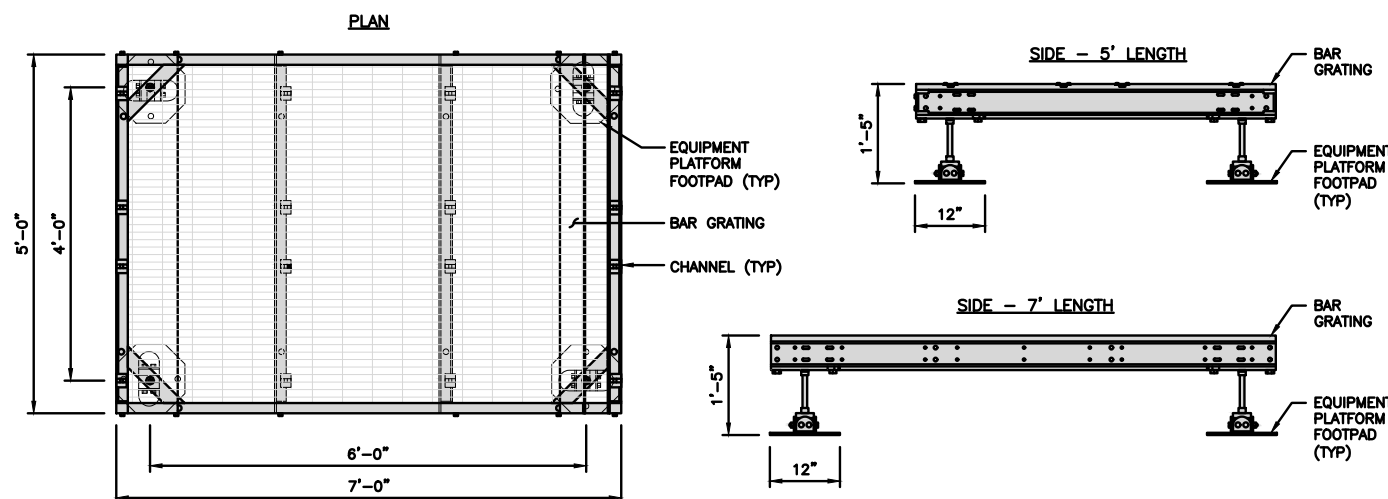
PLATFORM EQUIPMENT PLAN



1

<b>COMMSCOPE MTC4045LP 5X7 PLATFORM</b>	
DIMENSIONS (HxWxD)	16"x84"x60"
TOTAL WEIGHT	423 LBS

NOTE:  
GC TO PROVIDE EXTENDED  
THREAD FOR PLATFORM IF  
REQUIRED HEIGHT EXCEEDS 17"



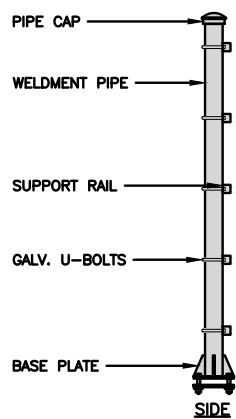
PLATFORM DETAIL

NO SCALE

2

<b>COMMSCOPE MTC4045HFLD H-FRAME</b>	
UNISTRUT/SUPPORT RAILS QTY	5
WEIGHT	59.74 lbs

NOTE:  
OR DISH Wireless L.L.C.  
APPROVED EQUIVALENT



H-FRAME DETAIL

NO SCALE

3

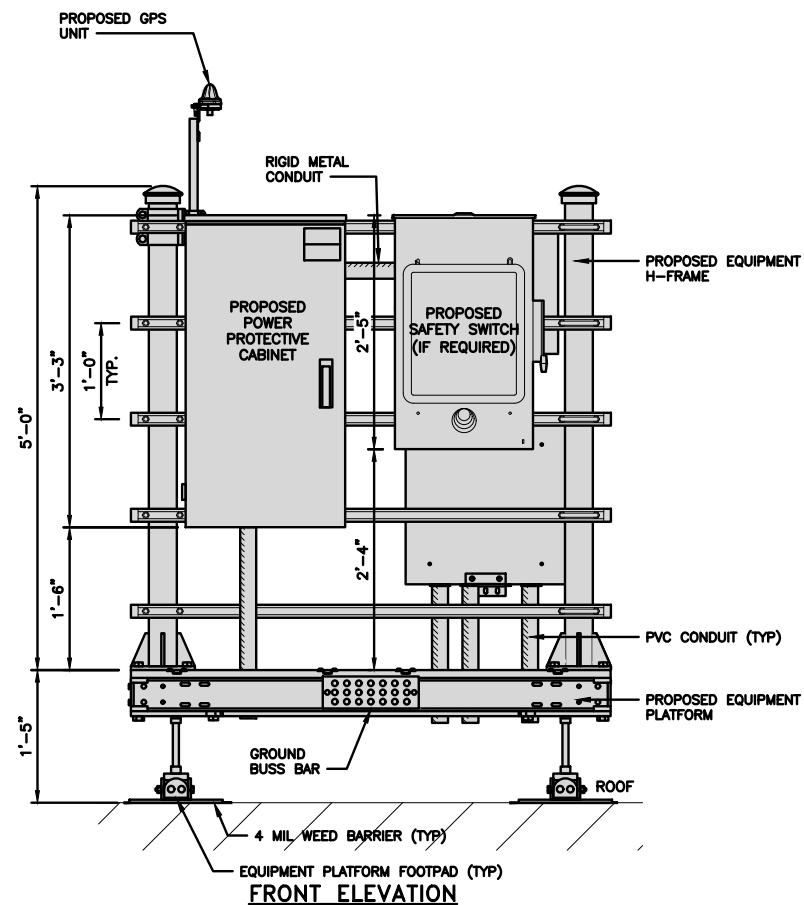
NOT USED

NO SCALE

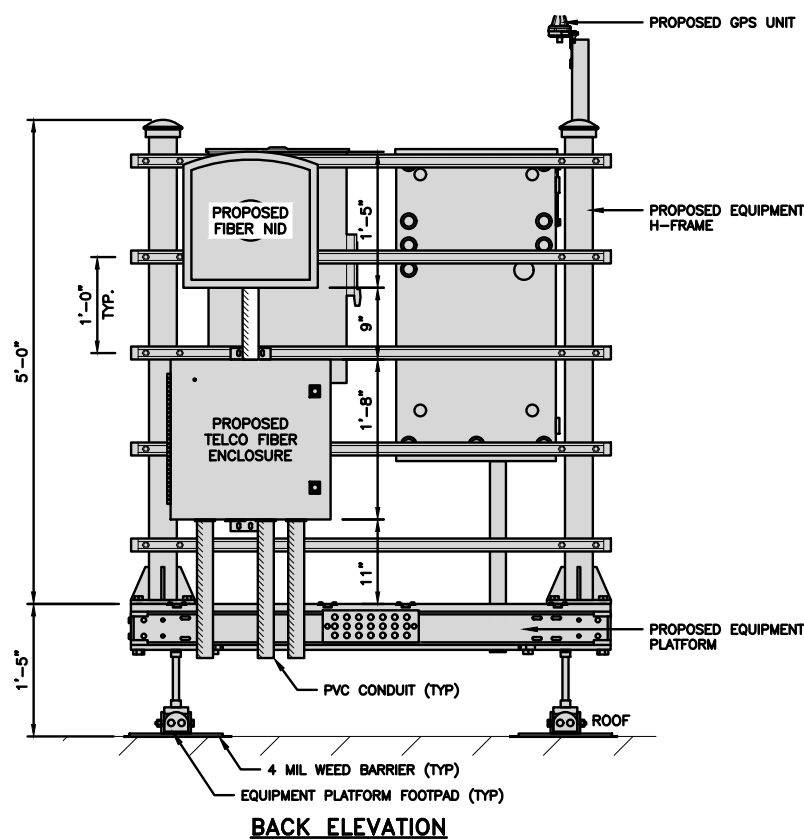
4

**NOTE**

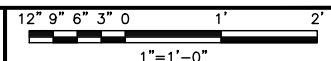
1. EQUIPMENT CABINET OMITTED FOR CLARITY



FRONT ELEVATION



BACK ELEVATION



5



5701 SOUTH SANTA FE DRIVE  
LITTLETON, CO 80120



MODUS, LLC  
240 STOCKTON ST., 3RD FLOOR  
SAN FRANCISCO, CA  
94108

IT IS A VIOLATION OF LAW FOR ANY PERSON,  
UNLESS THEY ARE ACTING UNDER THE DIRECTION  
OF A LICENSED PROFESSIONAL ENGINEER,  
TO ALTER THIS DOCUMENT.

DRAWN BY: CLP  
CHECKED BY: SH  
APPROVED BY: LJB

RFDS REV #: 2 10/21/2021

**ZONING DOCUMENTS**

SUBMITTALS		
REV	DATE	DESCRIPTION
A	10/14/2021	ISSUED FOR REVIEW
B	12/10/2021	90% ZD

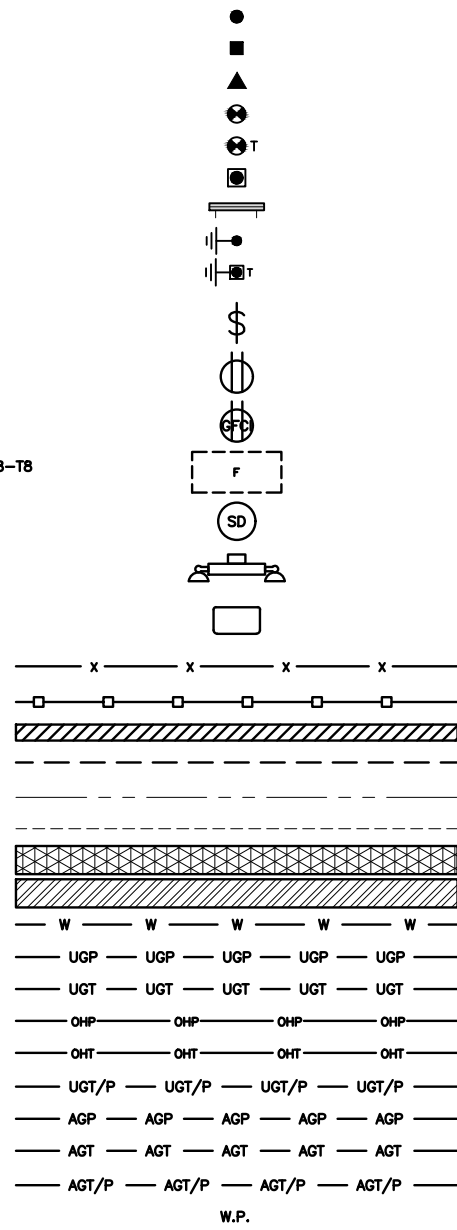
A&E PROJECT NUMBER  
SFSF000939A

DISH Wireless L.L.C.  
PROJECT INFORMATION  
SFSF000939A  
1035 SAN PABLO AVE  
ALBANY, CA 94706

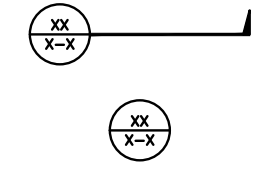
SHEET TITLE  
EQUIPMENT PLATFORM AND  
H-FRAME DETAILS

SHEET NUMBER  
**A-5**

EXOTHERMIC CONNECTION  
 MECHANICAL CONNECTION  
 BUSS BAR INSULATOR  
 CHEMICAL ELECTROLYTIC GROUNDING SYSTEM  
 TEST CHEMICAL ELECTROLYTIC GROUNDING SYSTEM  
 EXOTHERMIC WITH INSPECTION SLEEVE  
 GROUNDING BAR  
 GROUND ROD  
 TEST GROUND ROD WITH INSPECTION SLEEVE  
 SINGLE POLE SWITCH  
 DUPLEX RECEPTACLE  
 DUPLEX GFCI RECEPTACLE  
 FLUORESCENT LIGHTING FIXTURE (2) TWO LAMPS 48-T8  
 SMOKE DETECTION (DC)  
 EMERGENCY LIGHTING (DC)  
 SECURITY LIGHT W/PHOTOCELL LITHONIA ALXW  
 LED-1-25A400/51K-SR4-120-PE-DOBTD  
 CHAIN LINK FENCE  
 WOOD/WROUGHT IRON FENCE  
 WALL STRUCTURE  
 LEASE AREA  
 PROPERTY LINE (PL)  
 SETBACKS  
 ICE BRIDGE  
 CABLE TRAY  
 WATER LINE  
 UNDERGROUND POWER  
 UNDERGROUND TELCO  
 OVERHEAD POWER  
 OVERHEAD TELCO  
 UNDERGROUND TELCO/POWER  
 ABOVE GROUND POWER  
 ABOVE GROUND TELCO  
 ABOVE GROUND TELCO/POWER  
 WORKPOINT



SECTION REFERENCE  
 DETAIL REFERENCE



**LEGEND**

AB	ANCHOR BOLT	IN	INCH	INT	INTERIOR
ABV	ABOVE	INT	INTERIOR	LB(S)	POUND(S)
AC	ALTERNATING CURRENT	LF	LINEAR FEET	LTE	LONG TERM EVOLUTION
ADDL	ADDITIONAL	MAS	MASONRY	MAX	MAXIMUM
AFF	ABOVE FINISHED FLOOR	MB	MACHINE BOLT	MECH	MECHANICAL
AFG	ABOVE FINISHED GRADE	MFR	MANUFACTURER	MGB	MASTER GROUND BAR
AGL	ABOVE GROUND LEVEL	MIN	MINIMUM	MISC	MISCELLANEOUS
AIC	AMPERAGE INTERRUPTION CAPACITY	MTL	METAL	MTS	MANUAL TRANSFER SWITCH
ALUM	ALUMINUM	MW	MICROWAVE	NEC	NATIONAL ELECTRIC CODE
ALT	ALTERNATE	NM	NEWTON METERS	NO.	NUMBER
ANT	ANTENNA	#	NUMBER	NTS	NOT TO SCALE
APPROX	APPROXIMATE	OC	ON-CENTER	OSHA	OCCUPATIONAL SAFETY AND HEALTH ADMINISTRATION
ARCH	ARCHITECTURAL	OPNG	OPENING	OPNG	OPENING
ATS	AUTOMATIC TRANSFER SWITCH	P/C	PRECAST CONCRETE	PCS	PERSONAL COMMUNICATION SERVICES
AWG	AMERICAN WIRE GAUGE	PCU	PRIMARY CONTROL UNIT	PP	POLARIZING PRESERVING
BATT	BATTERY	PRC	PRIMARY RADIO CABINET	PSF	POUNDS PER SQUARE FOOT
BLDG	BUILDING	PP	POLARIZING PRESERVING	PSI	POUNDS PER SQUARE INCH
BLK	BLOCK	PSF	POUNDS PER SQUARE FOOT	PT	PRESSURE TREATED
BLKG	BLOCKING	PWR	POWER CABINET	QTY	QUANTITY
BM	BEAM	RAD	RADIUS	RECT	RECTIFIER
BTC	BARE TINNED COPPER CONDUCTOR	REF	REFERENCE	REIN	REINFORCEMENT
BOF	BOTTOM OF FOOTING	REF	REFERENCE	REINF	REINFORCEMENT
CAB	CABINET	REQ'D	REQUIRED	RET	REMOTE ELECTRIC TILT
CANT	CANTILEVERED	RFC	RADIO FREQUENCY	RMC	RIGID METALLIC CONDUIT
CHG	CHARGING	RRH	REMOTE RADIO HEAD	RRU	REMOTE RADIO UNIT
CLG	CEILING	RWY	RACEWAY	SCH	SCHEDULE
CLR	CLEAR	SHT	SHEET	SIAD	SMART INTEGRATED ACCESS DEVICE
COL	COLUMN	SIM	SIMILAR	SPEC	SPECIFICATION
COMM	COMMON	SQ	SQUARE	SS	STAINLESS STEEL
CONC	CONCRETE	STD	STANDARD	STL	STEEL
CONSTR	CONSTRUCTION	TEMP	TEMPORARY	THK	THICKNESS
DBL	DOUBLE	TMA	TOWER MOUNTED AMPLIFIER	TN	TOE NAIL
DC	DIRECT CURRENT	TOA	TOP OF ANTENNA	TOC	TOP OF CURB
DEPT	DEPARTMENT	TOF	TOP OF FOUNDATION	TOP	TOP OF PLATE (PARAPET)
DF	DOUGLAS FIR	TOS	TOP OF STEEL	TOW	TOP OF WALL
DIA	DIAMETER	TVSS	TRANSIENT VOLTAGE SURGE SUPPRESSION	TYP	TYPICAL
DIAG	DIAGONAL	UG	UNDERGROUND	UL	UNDERWRITERS LABORATORY
DIM	DIMENSION	UNO	UNLESS NOTED OTHERWISE	UMTS	UNIVERSAL MOBILE TELECOMMUNICATIONS SYSTEM
DWG	DRAWING	UPS	UNINTERRUPTIBLE POWER SYSTEM (DC POWER PLANT)	VIF	VERIFIED IN FIELD
DWL	DOWEL	W	WIDE	W	WIDE
EA	EACH	W/	WITH	WD	WOOD
EC	ELECTRICAL CONDUCTOR	WP	WEATHERPROOF	WT	WEIGHT
EL	ELEVATION				
ELEC	ELECTRICAL				
EMT	ELECTRICAL METALLIC TUBING				
ENG	ENGINEER				
EQ	EQUAL				
EXP	EXPANSION				
EXT	EXTERIOR				
EW	EACH WAY				
FAB	FABRICATION				
FF	FINISH FLOOR				
FG	FINISH GRADE				
FIF	FACILITY INTERFACE FRAME				
FIN	FINISH(ED)				
FLR	FLOOR				
FDN	FOUNDATION				
FOC	FACE OF CONCRETE				
FOM	FACE OF MASONRY				
FOS	FACE OF STUD				
FOW	FACE OF WALL				
FS	FINISH SURFACE				
FT	FOOT				
FTG	FOOTING				
GA	GAUGE				
GEN	GENERATOR				
GFCI	GROUND FAULT CIRCUIT INTERRUPTER				
GLB	GLUE LAMINATED BEAM				
GLV	GALVANIZED				
GPS	GLOBAL POSITIONING SYSTEM				
GND	GROUND				
GSM	GLOBAL SYSTEM FOR MOBILE				
HDG	HOT DIPPED GALVANIZED				
HDR	HEADER				
HGR	HANGER				
HVAC	HEAT/VENTILATION/AIR CONDITIONING				
HT	HEIGHT				
IGR	INTERIOR GROUND RING				

**ABBREVIATIONS**



5701 SOUTH SANTA FE DRIVE  
 LITTLETON, CO 80120



MODUS, LLC  
 240 STOCKTON ST., 3RD FLOOR  
 SAN FRANCISCO, CA  
 94108

IT IS A VIOLATION OF LAW FOR ANY PERSON, UNLESS THEY ARE ACTING UNDER THE DIRECTION OF A LICENSED PROFESSIONAL ENGINEER, TO ALTER THIS DOCUMENT.

DRAWN BY:	CHECKED BY:	APPROVED BY:
CLP	SH	LJB

RFDS REV #: 2 10/21/2021

**ZONING DOCUMENTS**

SUBMITTALS		
REV	DATE	DESCRIPTION
A	10/14/2021	ISSUED FOR REVIEW
B	12/10/2021	90% ZD

A&E PROJECT NUMBER  
 SFSF000939A

DISH Wireless L.L.C.  
 PROJECT INFORMATION  
 SFSF000939A  
 1035 SAN PABLO AVE  
 ALBANY, CA 94706

SHEET TITLE  
 LEGEND AND ABBREVIATIONS

SHEET NUMBER  
**GN-1**