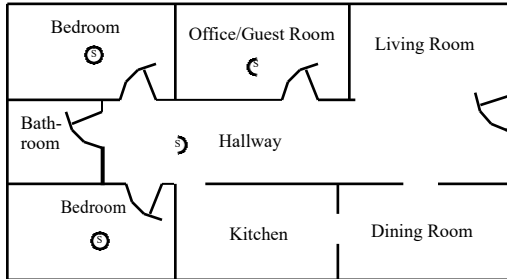




ALBANY CALIFORNIA

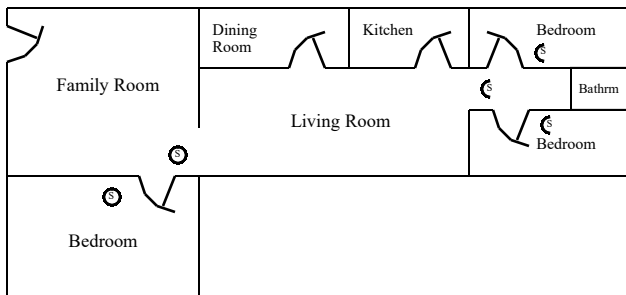
Residential Smoke Alarms

Figure 1



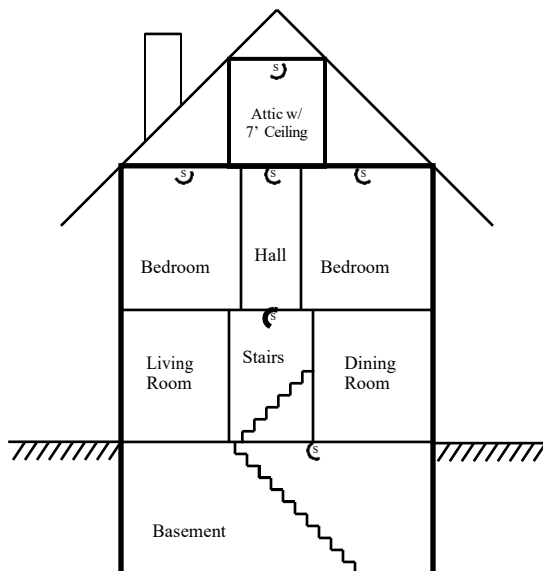
Typical Placement Within Residence

Figure 2



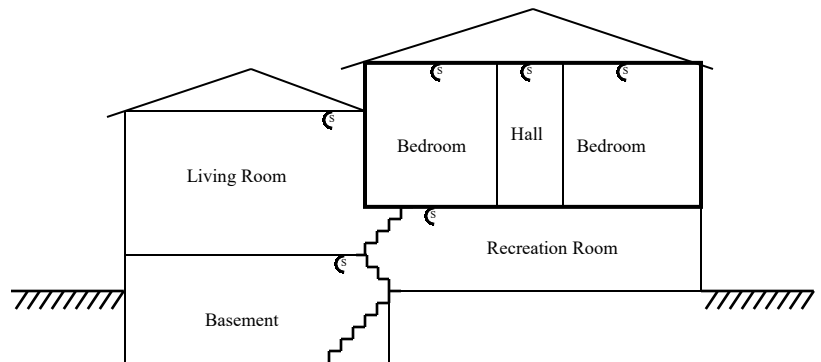
Placement Within Residence Where Bedrooms are in Different Areas

Figure 3



Typical Placement - Multistory Dwelling

Figure 4



Typical Placement - Split-Level Dwelling

Single-Family Dwelling and Duplex Requirements

Smoke alarms are required:

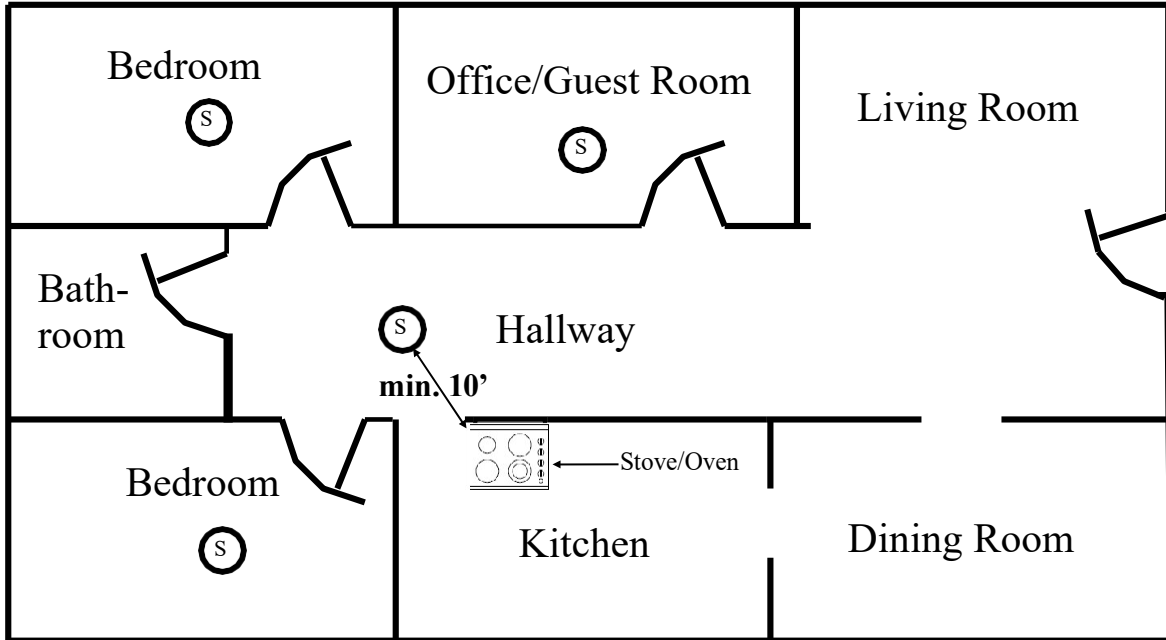
- 1) In each sleeping room (see Figure 1);
- 2) Outside each separate sleeping area in the immediate vicinity of the bedrooms (see Figures 1 & 2);
- 3) On each additional story of the dwelling, including basements and habitable attics and not including crawlspaces and uninhabitable attics. (see Figures 3 & 4).

For more information on alarm placement requirements, see Figures 5 - 9 on the following pages.

Applicable Codes & Laws: 2019 California Residential Code, Section R314; 2019 California Fire Code, Section 907.2.10.2; 2019 National Fire Alarm & Signaling Code §29.8.1; City Ordinance Chapter XI, Sections 11.2.3f & 11.4; CA SB745 (available upon request)

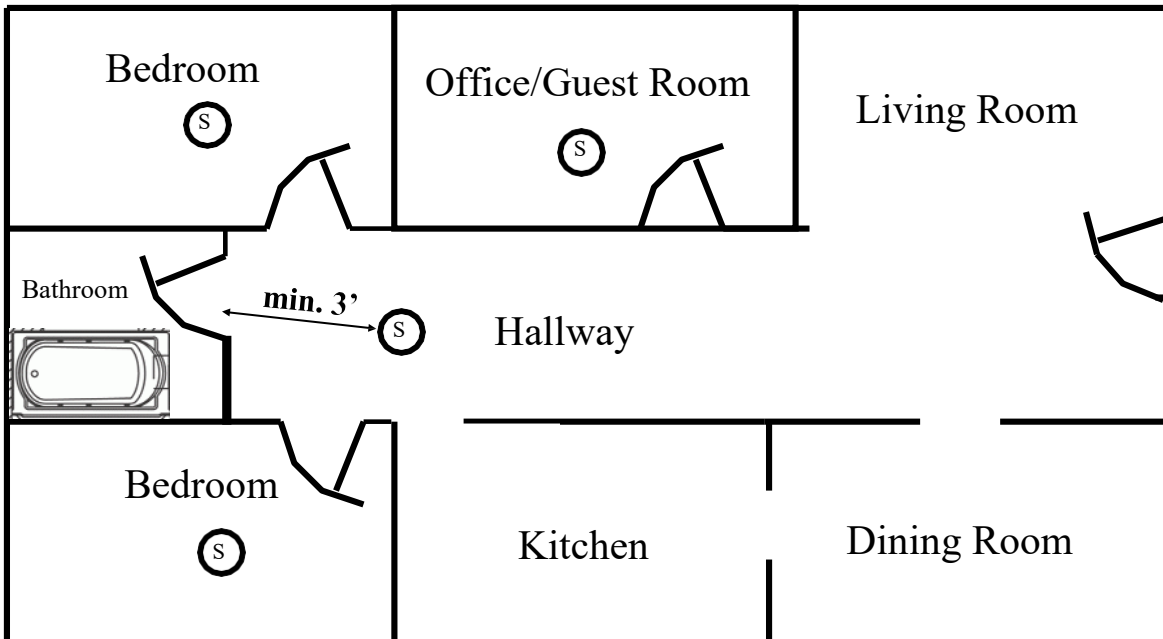
Please see following pages for City and State regulations affecting Smoke Alarm requirements.

Figure 5



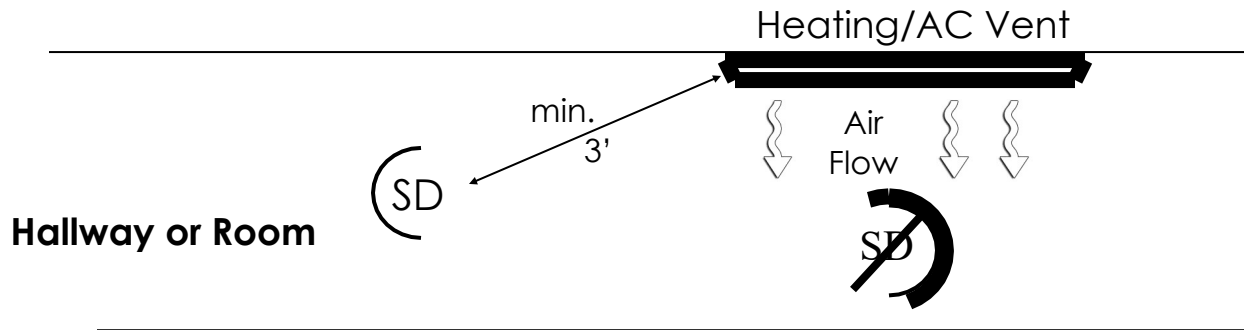
Hallway smoke alarm placement in relation to permanently installed cooking device: Minimum distance between smoke alarm and cooking device is 10 feet (CRC Section R314.3.3). See Code Section for exceptions.

Figure 6



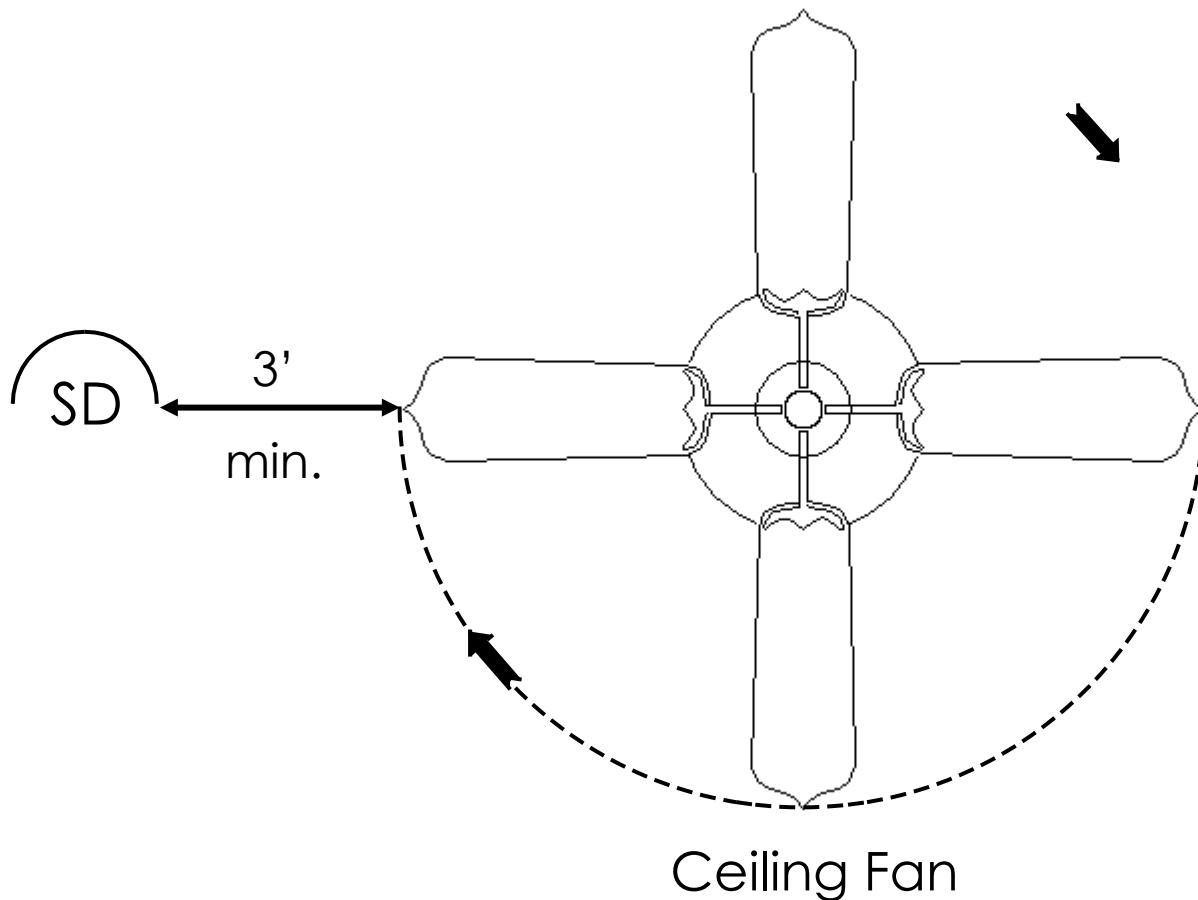
Hallway smoke alarm placement in relation to bathroom containing bath-tub or shower: Minimum distance between smoke alarm and door of bath-room is 3 feet (CRC Section R314.3.3). See Code Section for exceptions.

Figure 7



Hallway or room smoke alarm placement in relation to heating/air conditioning supply register: Minimum distance between smoke alarm and register is 3 feet. To be installed outside of the direct airflow of the register (CRC Section R314.3.3).

Figure 8



Hallway or room smoke alarm placement in relation to ceiling-mounted fan: Minimum distance between smoke alarm and blade tip is 3 feet. (CRC Section R314.3.3).



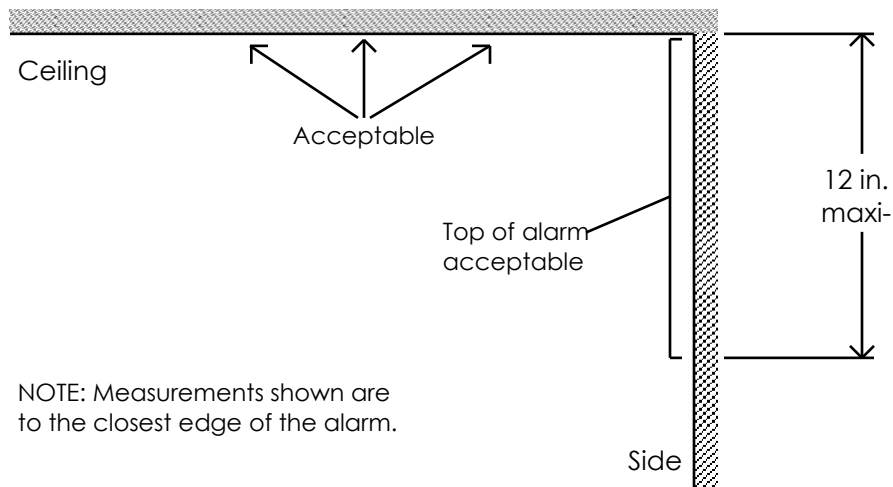
ALBANY CALIFORNIA

Residential Smoke Alarms

Figure 9

Placement Guidelines for Walls & Ceilings

The figure below illustrates proper mounting placement for smoke alarms per Section A.29.8.3 of the 2019 NFPA 72.



City of Albany & State Fire Marshal's Guidelines

- City of Albany policy requires that alarms installed in residences be of the **photoelectric*** type.
- When shopping for smoke alarms, look for **photoelectric** alarms (City requirement) which have a sealed 10-year battery (State requirement).
- All smoke alarms require regular monthly tests.

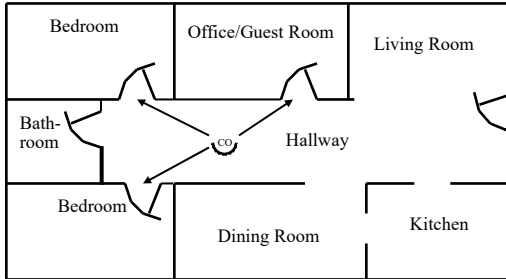
*Per Albany Ordinance No.2010-06, adopted 7/19/10



ALBANY CALIFORNIA

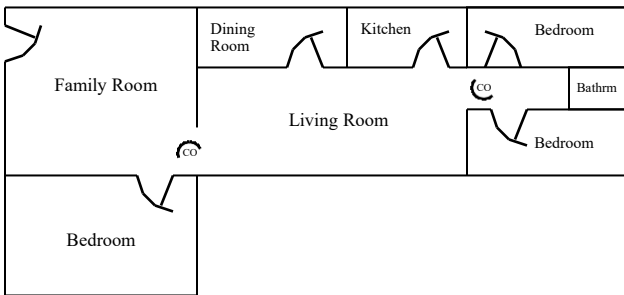
Residential Carbon Monoxide Alarms

Figure 1



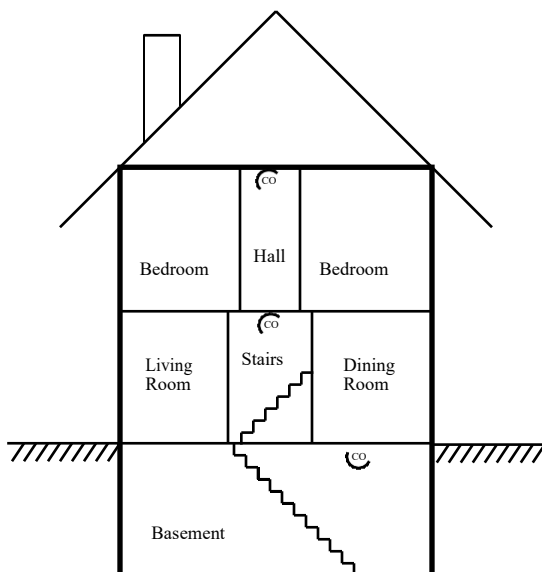
Typical Placement Within Residence

Figure 2



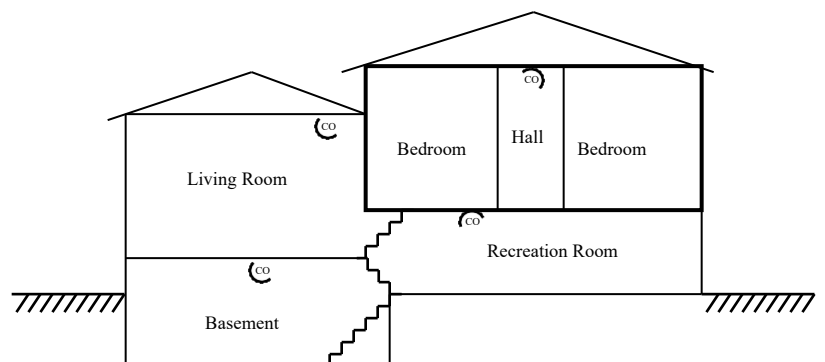
Placement Within Residence Where Bedrooms are in Different Areas

Figure 3



Typical Placement - Multistory Dwelling

Figure 4



Typical Placement - Split-Level Dwelling

Single-Family and Multifamily Dwelling Requirements

Carbon monoxide alarms are required:

- 1) In every dwelling unit containing a fireplace or fuel-fired appliance;
- 2) In every dwelling unit with an attached garage with an opening (e.g., door) to the dwelling unit.

Carbon monoxide alarm placement:

- A) Outside of each sleeping room in the immediate vicinity of the sleeping room (see Figures 1 & 2);
- B) On every occupiable level of a dwelling unit, including basements (see Figures 3 & 4);
- C) In sleeping rooms, where a fuel-burning appliance is located in the sleeping room or its attached bathroom (see Figure 5).

Applicable Codes: California Health & Safety Code § 17926(a); 2019 California Residential Code § R315; 2019 California Building Code § 915; 2019 California Fire Code § 915. **Refer to applicable codes for additional requirements.**

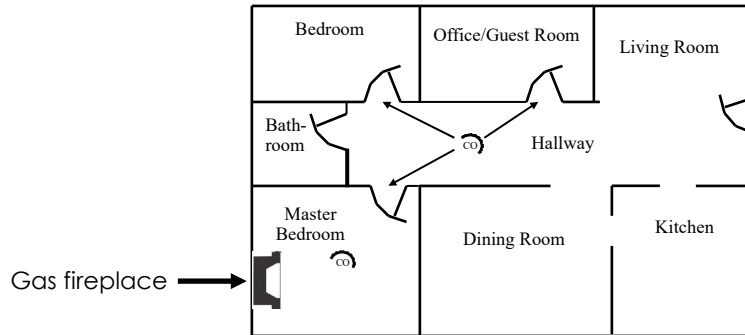
Always install carbon monoxide detectors according to the manufacturer's instructions. Refer to the manual included with the unit. For more information, call the City of Albany's Community Development Department at (510) 528-5760 or Fire Prevention Bureau at (510) 528-5775.



ALBANY CALIFORNIA

Residential Carbon Monoxide Alarms

Figure 5



**Requirement where fuel-burning
appliance located within sleep-**

NOTE: All carbon monoxide alarms installed must be approved by the California Office of the State Fire Marshal (OSFM). Listings can be found here: <http://osfm.fire.ca.gov/strucfireengineer/>