

# EMAILS RECEIVED REGARDING AGENDA ITEMS

## CITY OF ALBANY, CALIFORNIA



ALBANY CITY HALL  
1000 SAN PABLO AVENUE  
ALBANY, CALIFORNIA 94706

***Item 11-1:  
Final Plans for Phase IV of the  
Lower Codornices Creek Restoration  
Project***

**CITY COUNCIL MEETING**  
October 21, 2019

**From:** [Ian MacLeod](#)  
**To:** [citycouncil](#)  
**Subject:** Codornices Creek Path Plan Item 11-1  
**Date:** Sunday, October 20, 2019 11:39:19 PM  
**Attachments:** [Codornices Plan L-4.1 10 20 2019.pdf](#)  
[Codornices Plan L-4.2 10 20 2019.pdf](#)  
[Codornices Plan L-4.3 10 20 2019.pdf](#)

---

Dear Council Members,

Regarding Item 11-1, Codornices Creek Restoration Plan Phase IV, while I am very happy to see this getting closer to implementation, and overall it is a good project which I strongly support, there are still some significant problems with some elements of the plan.

1. The transition from 10th Street to the new path adjacent to the Little League fields on sheet L-2.3 is still a major problem area. As shown on the new plan, it is too narrow, too constricted, too many things put right there, i.e. benches, bike racks, bleachers, fences, plants, etc. The bleachers look like they have been moved back south a bit and more in the way than compared to the 75% plans. The net result is that this area will be a major conflict zone at times of peak use. Imagine kids, parents, coaches entering and exiting on 10th Street between the bleachers and bike racks, and at the same time cyclists turning left or right into and out of that space. Peak baseball use times will coincide with peak pedestrian and bicycle usage. Common sense dictates that this area should be wider and more generous to reduce conflicts and be safe for all users.
2. Tight curves. The curve at the end of the ball fields on sheet L-2.2A is still too tight, exacerbated by the placement of boulders at the inside corner. The curve should be flattened as much as possible and the boulders removed to allow safer turns by cyclists, especially by those on long tail cargo bikes.
3. The end of the path at 8th St. It would be better to add a curb cut straight in line with the path to allow cyclists to enter the street directly and turn right or left on 8th. As a cyclist, I do not want to be forced to ride on the sidewalk with pedestrians. A curb cut in this location is a relatively inexpensive solution that allows for greater flexibility in for cyclists in this transition zone.
4. Lighting - per the cost sheet: **Lighting is not included and is assumed provided by senior housing developer, ball fields, and two cities.** This is a very critical piece of the plan that has a huge impact on safety and usability. A lighting plan has to be included and the installation work has to be coordinated and done at the same time as the path work. A process should be established for the design work, budgeting, and cost allocation. This cannot be an afterthought and done at some future time.
5. The landscape plan. Many of the plants are put too close to the path and will grow into the path and make it harder for pedestrians and cyclists to share the path. The plans on L-4.2 and L-4.3 show the low fence moved south away a couple of feet from the path as requested, but now that strip is filled in with big boxy bushes, which totally defeats the purpose of moving the fence. The plants should be removed and the ground left flat as a buffer zone in front of the fence. In general, however, I wonder about the wisdom of doing any planting at all with irrigation, planters, and boulders, etc. A better solution would be to coordinate the work with full creek restoration, non-native plant removal, along with allowing selected native species to reestablish themselves as has been done elsewhere on Codornices Creek. The creek should be allowed to return to its natural state as much as possible.

Please see the attached plans for the specific areas referred to above.

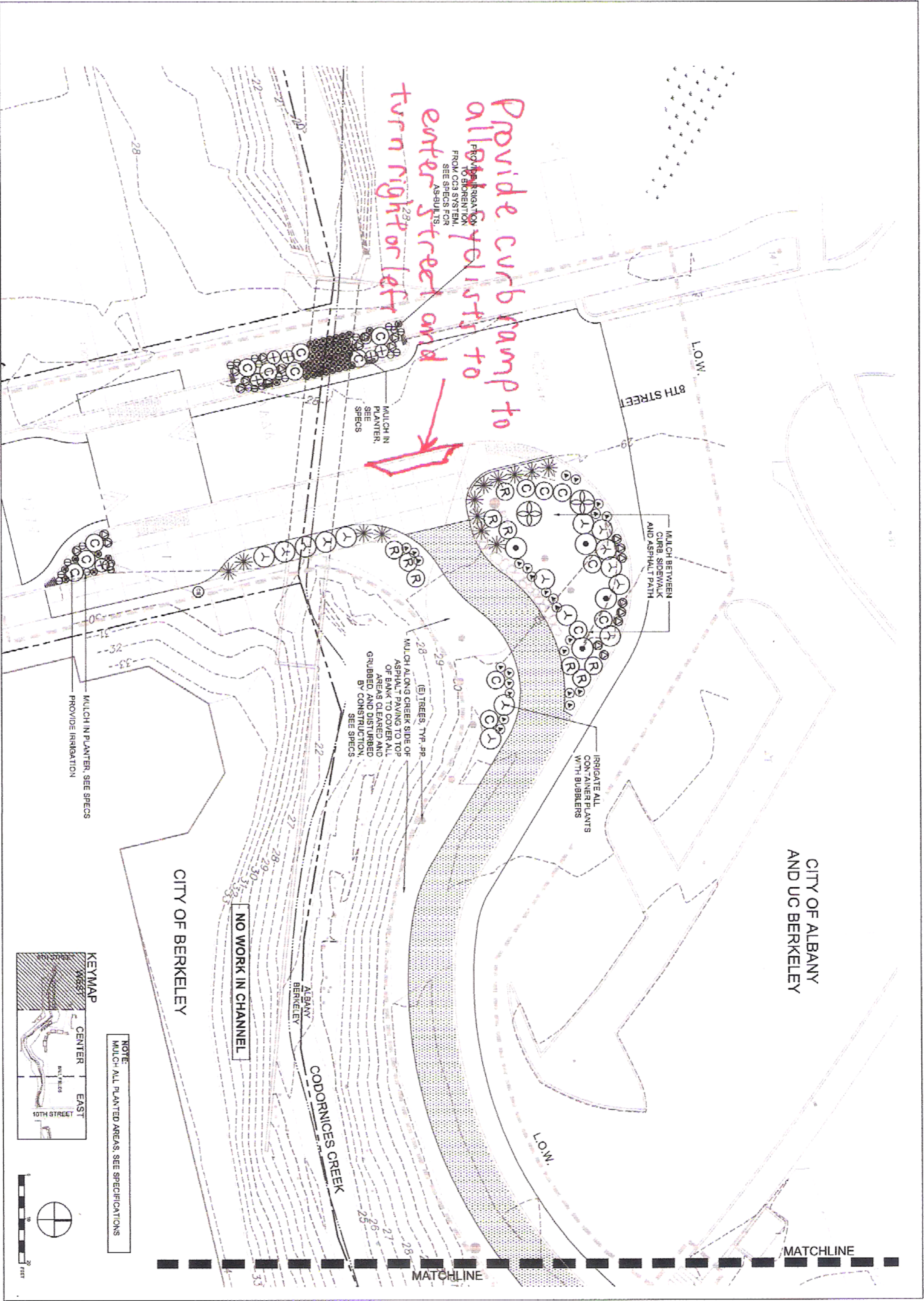
I would encourage you to require changes to the Plans per above.

Sincerely,

Ian MacLeod

Planning & Zoning Commission Member, writing on my own behalf





DATE	DESCRIPTION	REVISIONS

**PROJECT TITLE**  
**CODORNICES CREEK PHASE IV**  
 8TH STREET TO 10TH STREET

**DESIGN PHASE**  
 100% SET

**SHEET TITLE**  
 REVEGETATION WEST

**KEYMAP**

**NOTE:**  
 MULCH ALL PLANTED AREAS. SEE SPECIFICATIONS.

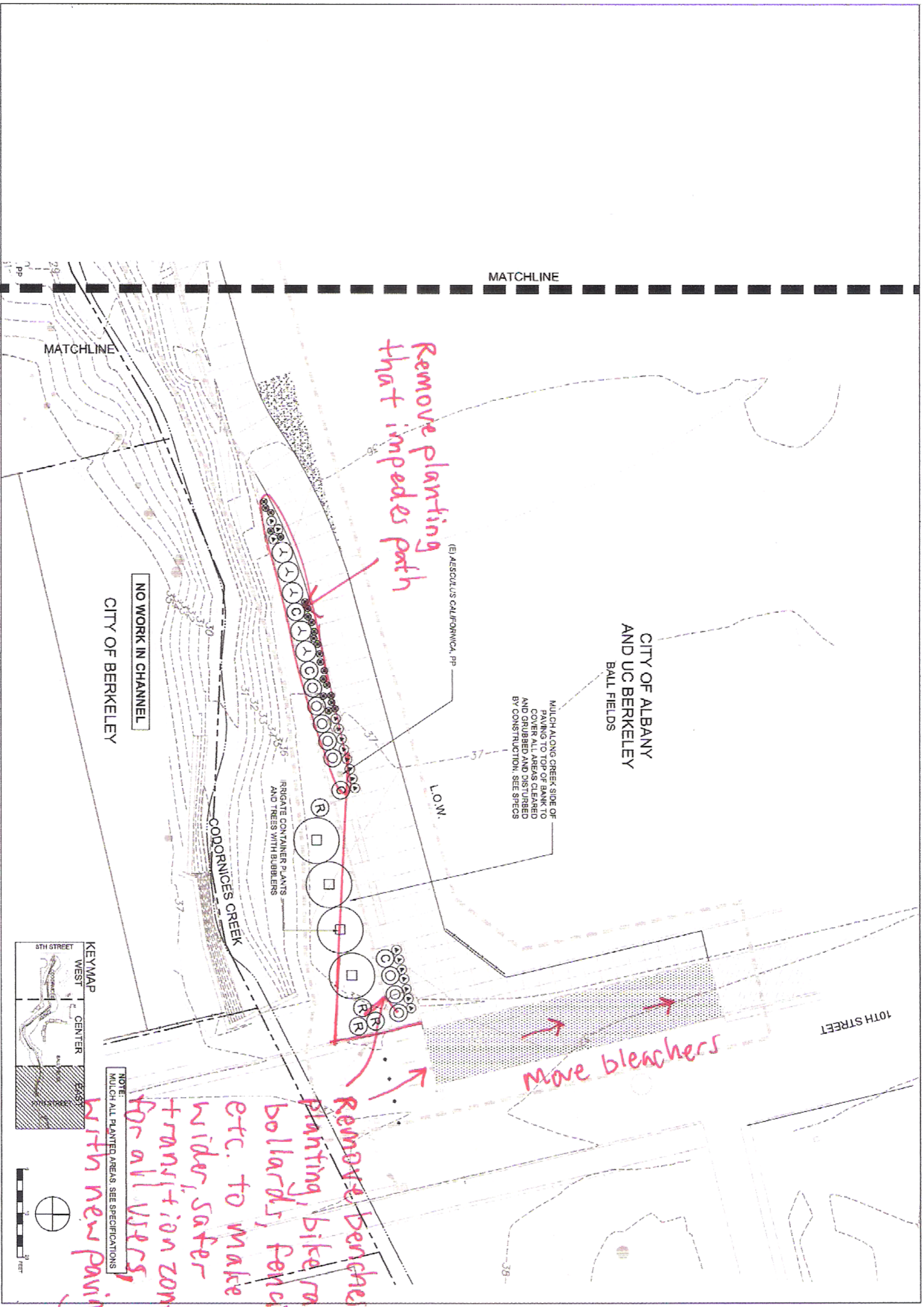
**PROFESSIONAL SEAL:** [Seal of a Licensed Professional Engineer, State of California, No. 10000]

**Preparation Design Group, Inc.**  
 2021 5th Street, Suite C  
 Berkeley, CA 94702  
 T: 510.843.2700 F: 510.843.2700  
 www.preparationdesigngroup.com

**SDG**

**DESIGNED BY:** RAS, BS, MT  
**CHECKED BY:** ES, MT  
**SCALE:** 1" = 10'-0"  
**DATE:** OCTOBER 11, 2019  
**SHEET:** L-4.1  
 OF 19





REVISIONS	
DATE	DESCRIPTION

PROJECT TITLE  
**CODORNICES CREEK PHASE IV**  
8TH STREET TO 10TH STREET

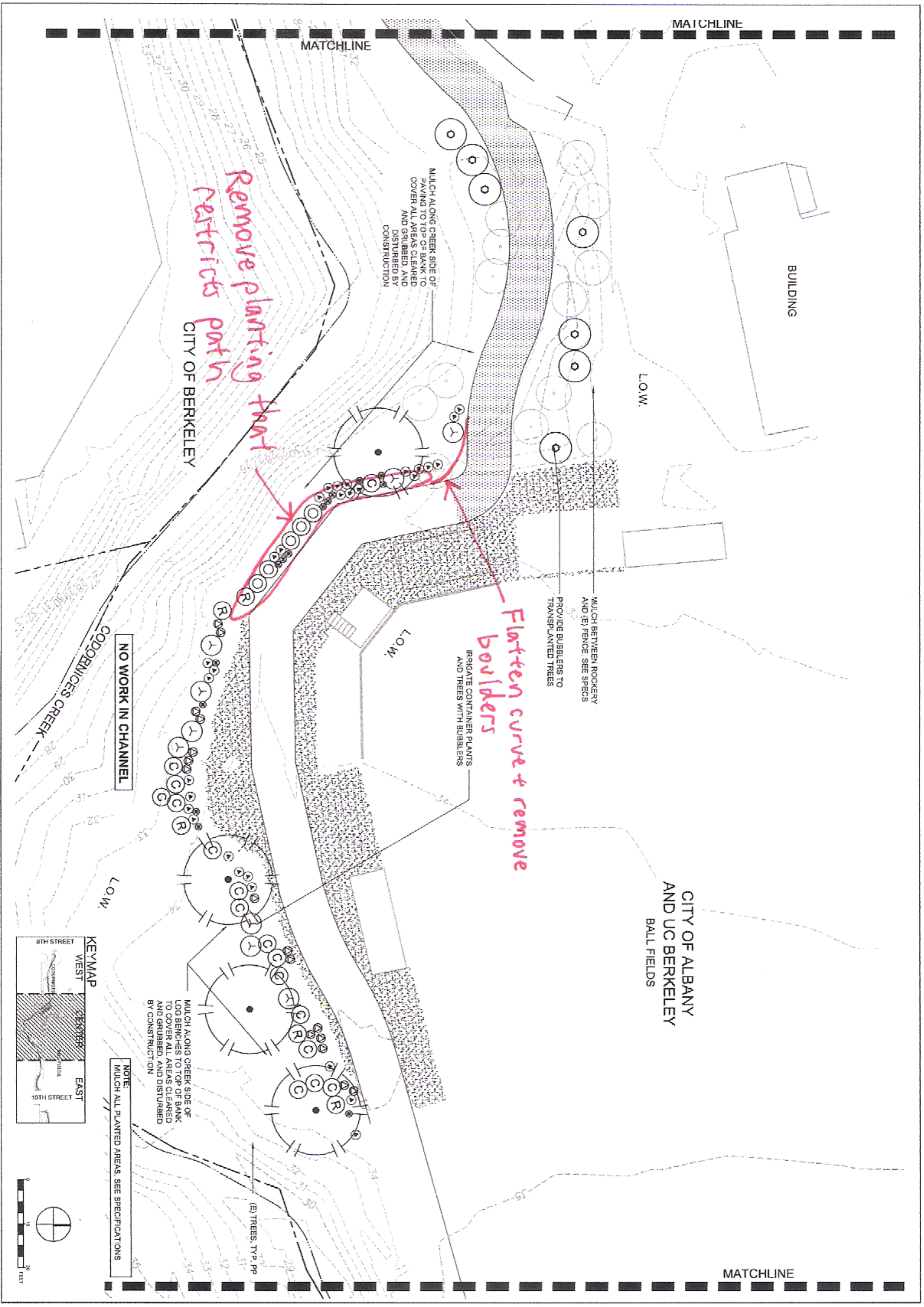
DESIGN PHASE  
100% SET

SHEET TITLE  
REVEGETATION EAST

Registered Professional Engineer  
 License No. 10000  
 State of California  
 2012 24, Inverness, CA  
 T 916 444 7776 F 916 444 7776  
 www.morrisonmitchell.com

DESIGN BY: PIR, AS, NS, MIF  
 DRAWN BY: PIR, NS  
 CHECKED BY: ES, MIF  
 SCALE: 1" = 30'-0"  
 DATE: OCTOBER 11, 2019  
 SHEET: L-4.3  
 OF 19





REVISIONS	
DATE	DESCRIPTION

**CODORNICES CREEK PHASE IV**  
8TH STREET TO 10TH STREET

100% SET

REVEGETATION CENTER

PROJECT TITLE  
 SHEET TITLE  
 SHEET NO. 19  
 OF 19

L-4.2  
 OF 19

DESIGN BY: PRL, AS, DL, MT  
 DRAWN BY: PRL, MT  
 CHECKED BY: ES, MT  
 SCALE: 1" = 10'-0"  
 DATE: OCTOBER 11, 2013  
 SHEET

PROFESSIONAL SEAL  
 LICENSED LANDSCAPE ARCHITECT  
 STATE OF CALIFORNIA  
 No. 25704  
 PRL  
 2012 So. Shattuck Ave., Suite 200  
 Berkeley, CA 94704  
 T: 415.841.1319  
 www.prlandscape.com