



PARKS, RECREATION & OPEN SPACE COMMISSION

City Hall Council Chambers
1000 San Pablo Avenue, Albany, CA

AGENDA

THURSDAY, SEPTEMBER 12, 2019, 7:00 PM

1. CALL TO ORDER / ROLL CALL:

2. APPROVAL OF MINUTES: JULY 11, 2019

3. PUBLIC COMMENT:

For persons desiring to address the Commission on an item that is not on the agenda please note that each speaker is limited up to three (3) minutes. The Brown Act limits the Commission ability to take and/or discuss items that are not on the agenda; therefore, such items are normally referred to staff for comment or to a future agenda.

4. ANNOUNCEMENTS:

Staff and Commission member announcements, reports and updates of status.

4-1. Music in the Park

4-2. Ocean View Park Redwood Tree Work & Memorial Park Tree Removal

4-3. Friends of Albany Parks Update

4-4. Albany Local Week Events

5. PRESENTATIONS:

5-1. Background on Albany Waterfront Planning

Staff will present background on the Albany Waterfront.

Information Only

6. STREET TREE REMOVAL APPLICANTIONS:

6-1. Street Tree Removal for (1) Bradford Pear at 1259 Brighton Ave (Albany Middle School)

Recommendation: Approve the Street Tree removal permit.

6-2. Dead Tree Removal Report

Staff will present a list of dead trees that need to be removed and replaced.

Informational Only



PARKS, RECREATION & OPEN SPACE COMMISSION

City Hall Council Chambers
1000 San Pablo Avenue, Albany, CA

7. DISCUSSION & POSSIBLE ACTION ON MATTERS RELATED TO THE FOLLOWING ITEMS:

7-1. Update on Funding Sources

Staff will provide a brief status report on existing funding sources and potential Prop 68 grants.

Information Only

7-3. Update from the Community Garden Subcommittee

Sub-Committee members will report back to the Commission on the following:

- Community Garden-Background and Overview of the Issues
- Report on subcommittee activities and Information gathered to date
- Possible Proposed Solutions and early learnings
- Next Steps

Discussion Only

7-2. Proposal to convert Ocean View Tennis Courts to dedicated Pickleball Courts

The Commission will receive a report from Staff and presentation from the Pickleball representative.

Recommendation: That the Commission receive public feedback, discuss and possibly take action on one of the following options:

- 1) Approve the proposal to convert the Ocean View Tennis courts to dedicated Pickleball courts or approve with modifications (approval of between 4-8 courts) and direct staff to return to a future meeting with court design and potential funding sources;
- 2) Take no action on the proposal/no change to Tennis Courts at Ocean View;
- 3) Give staff direction to provide more information and defer the item to a future meeting

7-4. Dog Sub-Committee Report

Sub-Committee members will report back to the Commission regarding the Council's decision and input.

Information Only



PARKS, RECREATION & OPEN SPACE COMMISSION

City Hall Council Chambers
1000 San Pablo Avenue, Albany, CA

8. **FUTURE AGENDA ITEMS:**
Commissioners announce requests for future agenda items. No public comment will be taken on announcement of future agenda items.

9. **NEXT MEETING:** Thursday, October 10, 2019 7:00 pm, City Hall Council Chambers, 1000 San Pablo Ave. Please Note: there are no public meetings in August.

10. **ADJOURNMENT:**

NOTICE

As a general policy, the Commission/Committee/Board will not begin discussion or consideration of an agenda item after 10:00 pm.

Agendas are posted for public inspection in advance of meetings at the City Hall, the Albany Community Center, and the Albany Senior Center. Agendas and supporting documents can also be found online at: www.albanyca.org. Supporting documents and any public comments received will be made available for public inspection at City Hall. If you have any questions pertaining to any agenda item or meeting procedure, please contact the City Clerk's Office at 510-528-5710 or cityclerk@albanyca.org.

Council and Commission meetings are broadcast live on KALB and streamed live on the City website and YouTube. Audio recordings of Committee meetings will be uploaded to the City website and YouTube within one week of each public meeting. Archives of past City meetings are available on the City website and YouTube. Please note that if you provide your name and address when speaking before the Committee it will become part of the official public record, which will be posted on the Internet and broadcast on KALB.

In compliance with the Americans with Disabilities Act (ADA), and State Law, if you need special assistance to participate in this meeting, please contact the City Administration Office 510-528-5710. Notification 48 hours prior to the meeting will enable the City to make reasonable arrangements to ensure accessibility to this meeting (28 CFR 35.102.104 ADA Title II)". Upon request, we will provide written agenda materials in appropriate alternate formats, of disability related modification or accommodation, including auxiliary aids or services to enable individuals with disabilities to participate in public meetings. Please deliver a written request, including your name, mailing address, phone number and brief description of the requested materials and preferred alternative format or auxiliary aid or service at least two (2) days before the meeting. Request should be sent to: cityclerk@albanyca.org or City Clerk, 1000 San Pablo Avenue, Albany, CA 94706.

The City of Albany is dedicated to maintaining its small-town ambience, responding to the needs of a diverse community, and providing a safe, healthy and sustainable environment.



PARKS, RECREATION & OPEN SPACE COMMISSION

City Hall Council Chambers
1000 San Pablo Avenue, Albany, CA

MINUTES

THURSDAY, JULY 11, 2019, 7:00 PM

- 1. CALL TO ORDER / ROLL CALL: 7:01 pm; Absent Marten, Cooper**
- 2. APPROVAL OF MINUTES: JUNE 13, 2019**

Motion to approve: Commissioner Abbott
Seconded: Vice Chair Sardiñas
Vote: Favor All; Motion carried
- 3. PUBLIC COMMENT:**

For persons desiring to address the Commission on an item that is not on the agenda please note that each speaker is limited up to three (3) minutes. The Brown Act limits the Commission ability to take and/or discuss items that are not on the agenda; therefore, such items are normally referred to staff for comment or to a future agenda.
- 4. ANNOUNCEMENTS:**

Staff and Commission member announcements, reports and updates of status.
- 5. PRESENTATIONS:**
 - 5-1. Discussion of Draft Climate Action and Adaptation Plan Strategies**

Staff presented an overview of the planning process and actions in the draft Climate Action and Adaptation Plan.

Commissioners provided feedback to Staff.
- 6. STREET TREE REMOVAL APPLICATIONS:**
 - 6-1. Memorial Park Tree Removal for (1) Acacia**

Motion to approve: Chair Patterson
Seconded: Commissioner Abbott
Vote: Favor All; Motion carried
 - 6-2. Street Tree Removal Application for (1) Camphor at 808 Ramona Avenue**

Motion to approve: Commissioner Noble
Seconded: Chair Patterson
Vote: Favor All; Motion carried



PARKS, RECREATION & OPEN SPACE COMMISSION

City Hall Council Chambers
1000 San Pablo Avenue, Albany, CA

6-3. Street Tree Removal Application for (1) Jacaranda at 968 Talbot Avenue

Motion to approve: Commissioner Abbott

Seconded: Commissioner Noble

Vote: Favor 4; Motion carried (Commissioner Chang Frank not present during vote)

7. DISCUSSION & POSSIBLE ACTION ON MATTERS RELATED TO THE FOLLOWING ITEMS:

7-1. Terrace Park Replacement Tree Options

Staff presented three tree replacement options for the area west of the basketball court in Terrace Park.

Motion to approve the planting of 1 Big Leaf Maple: Chair Patterson

Seconded: Commissioner Noble

Vote: Favor All; Motion carried

7-2. Dog Sub-Committee Recommendation

Sub-Committee members presented their recommendations to the Commission.

Motion by: Chair Patterson to approve Section B designated as an official Dog Park in Albany and approve recommendations to develop a detailed plan for minor improvements to the area as noted in the Subcommittees report:

1. No change in current hours or rules
2. Add additional signage in area about rules (larger & clear)
3. Add a double gate entry and benches in area
4. Relocate entry to the gate near the athletic field and add auto-locking entry gate
5. Plantings around perimeter of area and trees for shade in area

Seconded: Commissioner Abbott

Vote: Favor All; Motion carried

7-3. Albany Hill Interpretive Signage Sub-Committee Update

Sub-Committee presented a plan to move forward and received input from Commissioners.

Commission approved Commissioner Abbott joining the Subcommittee



PARKS, RECREATION & OPEN SPACE COMMISSION

City Hall Council Chambers
1000 San Pablo Avenue, Albany, CA

8. **FUTURE AGENDA ITEMS:**
Commissioners announce requests for future agenda items. No public comment will be taken on announcement of future agenda items.

9. **NEXT MEETING:** Thursday, September 12, 2019 7:00 pm, City Hall Council Chambers, 1000 San Pablo Ave. Please Note: there are no public meetings in August.

10. **ADJOURNMENT: 10:06 pm**

NOTICE

As a general policy, the Commission/Committee/Board will not begin discussion or consideration of an agenda item after 10:00 pm.

Agendas are posted for public inspection in advance of meetings at the City Hall, the Albany Community Center, and the Albany Senior Center. Agendas and supporting documents can also be found online at: www.albanyca.org. Supporting documents and any public comments received will be made available for public inspection at City Hall. If you have any questions pertaining to any agenda item or meeting procedure, please contact the City Clerk's Office at 510-528-5710 or cityclerk@albanyca.org.

Council and Commission meetings are broadcast live on KALB and streamed live on the City website and YouTube. Audio recordings of Committee meetings will be uploaded to the City website and YouTube within one week of each public meeting. Archives of past City meetings are available on the City website and YouTube. Please note that if you provide your name and address when speaking before the Committee it will become part of the official public record, which will be posted on the Internet and broadcast on KALB.

In compliance with the Americans with Disabilities Act (ADA), and State Law, if you need special assistance to participate in this meeting, please contact the City Administration Office 510-528-5710. Notification 48 hours prior to the meeting will enable the City to make reasonable arrangements to ensure accessibility to this meeting (28 CFR 35.102.104 ADA Title II)". Upon request, we will provide written agenda materials in appropriate alternate formats, of disability related modification or accommodation, including auxiliary aids or services to enable individuals with disabilities to participate in public meetings. Please deliver a written request, including your name, mailing address, phone number and brief description of the requested materials and preferred alternative format or auxiliary aid or service at least two (2) days before the meeting. Request should be sent to: cityclerk@albanyca.org or City Clerk, 1000 San Pablo Avenue, Albany, CA 94706.

The City of Albany is dedicated to maintaining its small-town ambience, responding to the needs of a diverse community, and providing a safe, healthy and sustainable environment.

ALBANY CALIFORNIA

PUBLIC WORKS
1000 SAN PABLO AVENUE
ALBANY, CA 94706



510 524-2543 PHONE
510 524-9762 FAX
www.AlbanyCA.org/pw

Albany Unified School District

Non-Emergency City Tree Removal Application Albany Unified School District

Owner's Name: _____

1259 Brighton Ave, El Cerrito, CA 94706

Property Address: _____ Phone: _____

Email: _____ #of trees requesting to be removed 1

No permit to remove a living City Tree may be issued unless one or more of the following criteria is met:

- The City Tree is damaged, diseased, or borer infested beyond reclamation
- The City Tree due to its physical condition is an unacceptable risk to the City
- The City Tree has damaged the adjacent sidewalk to an extent that constitutes a tripping hazard, and the City Tree has caused the property owner to repair the adjacent sidewalk on at least one (1) previous occasion, as proven by documentation or Urban Forester inspection.
- The City Tree is detrimental to the public safety or materially injurious to the property, improvements or utility services in the vicinity
- The City Tree has been identified for removal as part of a City-approved project and/or has been determined by the Parks and Recreation Commission to be in conflict with the best use of a park.

I understand that removal of a City Tree which does not pose a clear and imminent danger to the safety of the general public requires review by the Urban Forester and the Parks & Recreation Commission at a public meeting. A replacement tree will be required for all approved tree removals. Application fee is \$209.92. Return fee and application to: Finance - City of Albany, 1000 San Pablo Ave., Albany, CA 94706

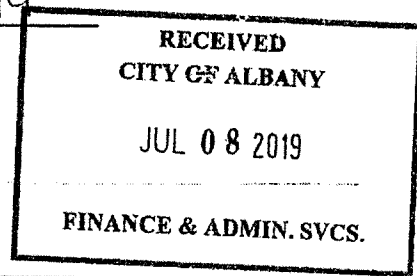
Signature: _____ Date: 6-28-19

City Action

Date Application Rcvd: _____ Fee Received (Amt): 7/8/19

Approved Declined Date: _____

\$ PAID





**CITY OF ALBANY
PARKS RECREATION AND OPEN SPACE COMMISSION AGENDA
STAFF REPORT**

Agenda Date: September 12, 2019

Reviewed by: _____

SUBJECT: 1259 Brighton Ave Tree Removal

REPORT BY: John Hawkridge, Urban Forester

SUMMARY

On June 28, 2019 I received a request to review a tree removal for the proposed ADA parking retrofit at 1259 Brighton Ave. There are 11 tree planting basins along this property, all equally spaced, all constructed with steel framework and tree grates. The tree in question is located in tree basin #8 (counting in direction of travel). Of the remaining trees, tree #1 and tree #6 are dead. Trees #8 to 11 are all in fairly good condition at this time.

The retrofit is to be constructed according to the California Department of Transportation Revised Standard Plan for accessible parking on-street.

Although the tree appears to be in good health, there seems to be no alternative to the placement of the ADA retrofit.

STAFF RECOMMENDATION

Staff recommends that the Commission approves removal of the tree per section 2.1.f of the City Tree Removal Policy and Procedures.

DISCUSSION

Removal of tree #8 will result in 3 of the original 11 trees either dead or missing. Tree #1 and tree #6 are dead. Since the removal of tree #8 will result in loss of a planting site, I would propose that tree numbers 1 and 6 be completely removed and stumps ground, and 2 new trees planted in these locations as part of the removal and replacement requirements. Replacement species should be a more appropriate species such as Trident Maple, which is the replacement species planted in basin #3

SUSTAINABILITY IMPACT

This project will result in the loss of one tree planting site for the city. Species to be removed is problematic (Bradford Pear) due to fireblight, and tendency to lose limbs.

FINANCIAL IMPACT

Costs to be incurred by the project

Attachments

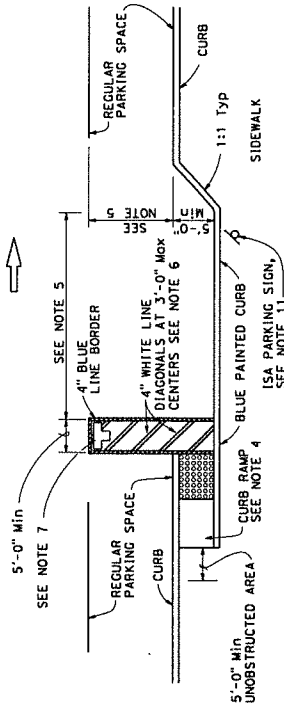
Albany Middle School Curb Striping Plan
CA ADA Standard for On-street Parking

© 2015 California Department of Transportation
All Rights Reserved

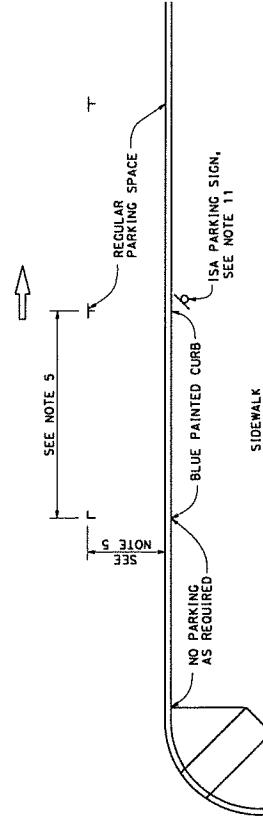
SHEET TOTAL	PROJECT NO.	ROUTE	COUNTY
NO. OF SHEETS	TOTAL PROJECT		

REGISTERED CIVIL ENGINEER
David Carasco
 No. C41997
 JULY 3, 2015
 EXPIRES 3-31-16
 REGISTERED PROFESSIONAL ENGINEER
 STATE OF CALIFORNIA
 LICENSE NO. C41997
 I HAVE APPROVED THIS PLAN AND I AM RESPONSIBLE FOR THE ACCURACY OF THE INFORMATION CONTAINED THEREIN.
 I HAVE REVIEWED THIS PLAN SHEET FOR CONFORMANCE WITH THE STANDARD PLAN RSP A90B.

TO ACCOMPANY PLANS DATED _____



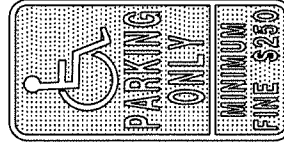
CONVENTIONAL
(See Note 9)



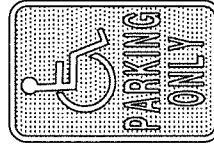
RESTRICTED RIGHT OF WAY WIDTH
ON-STREET PARKING
(Parallel parking)
(See Note 10)

NO PARKING

PAYEMENT MARKING
See Note 7



SIGN R99C (CA)
See Note 3



SIGN R99 (CA)



PLAQUE R99B (CA)
SIGN R99 (CA) with PLAQUE R99B (CA)
See Note 3

NOTES:

1. Parking spaces shall be so located that persons with disabilities are not compelled to wheel or walk behind parked vehicles other than their own.
2. Surface slopes of accessible on-street parking spaces shall be the minimum feasible.
3. Where Plaque R99B (CA) or Sign R99C (CA) are installed, the bottom of the sign or plaque panel shall be a minimum of 7'-0" above the surrounding surface.
4. Curb ramps shall conform to the details shown on Revised Standard Plan RSP AB8A.
5. Accessible on-street parking spaces shall not be smaller in length or width than that specified by the local jurisdiction for other parking spaces, but not less than 20'-0" in length and not less than 8'-0" in width.
6. Blue paint, instead of white may be used for marking accessibility aisles in areas where snow may cause white markings to not be visible.
7. The words "NO PARKING" shall be painted in white letters, no less than 1'-0" high on a contrasting background and located so that it is visible to traffic enforcement officials. See Revised Standard Plan RSP A24E for square foot area for painting the words "NO PARKING".
8. There shall be no obstructions on the sidewalk adjacent to and for the full extent of the parking space, except for the ISA parking sign shown.
9. The conventional detail should be the primary choice of accessible on-street parking. However, if the sidewalk lacks adequate space for a standard curb ramp, the restricted right of way detail should be used.
10. If the Restricted Right of Way width detail is selected and it conflicts with a bus stop or other uses, this detail may apply to the other end of the block.
11. Accessible Parking Only Sign shall be Sign R99C (CA) or Sign R99 (CA) with Plaque R99B (CA).

LEGEND

ISA = International Symbol of Accessibility

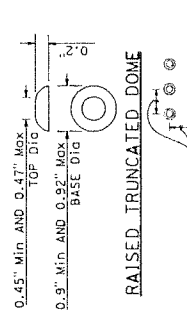
STATE OF CALIFORNIA
 DEPARTMENT OF TRANSPORTATION
ACCESSIBLE PARKING
ON-STREET
 NO SCALE

REVISED STANDARD PLAN RSP A90B

RSP A90B DATED JULY 3, 2015 SUPERSEDES RSP A90B DATED JULY 19, 2013 SUPERSEDES AND PLAN A90B DATED MAY 20, 2011 - PAGE 124 OF THE STANDARD PLANS BOOK DATED 2010.

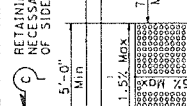
© 2017 California Department of Transportation
All Rights Reserved

SHEET NO. 1 OF 1
TOTAL SHEETS 1
DATE: JULY 21, 2017
PROJECT: [REDACTED]
COUNTY: [REDACTED]
ENGINEER: [REDACTED]
REGISTERED CIVIL ENGINEER
NO. 41987
EXPIRES: 3-31-19
STATE OF CALIFORNIA
DIVISION OF PROFESSIONAL REGULATION
CONTRACT NO. [REDACTED]

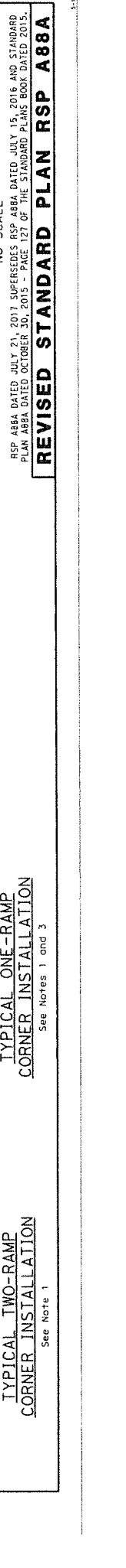
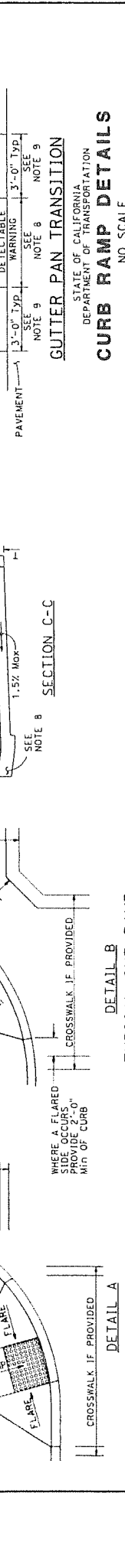
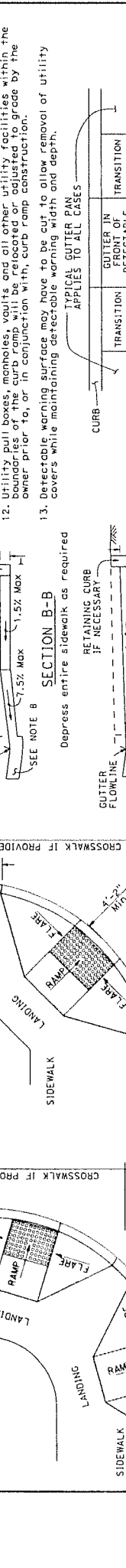
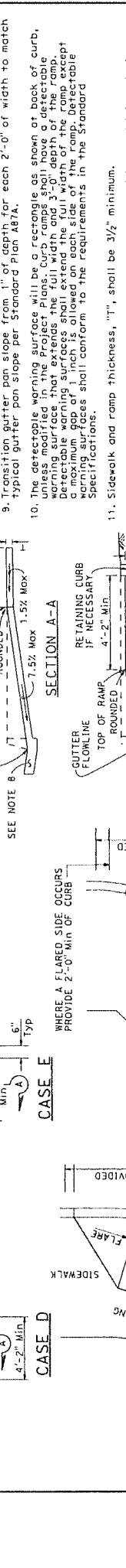
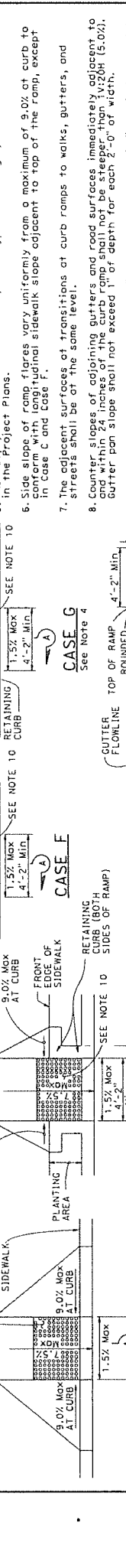
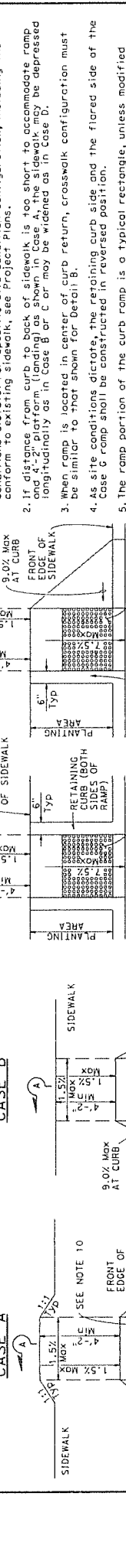
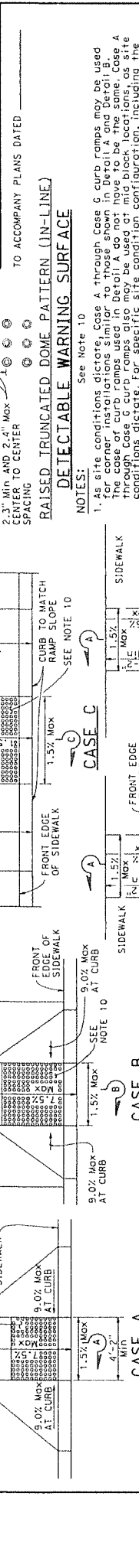
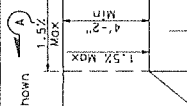
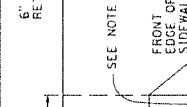
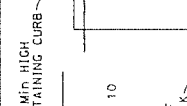
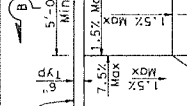
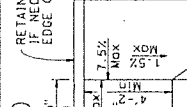
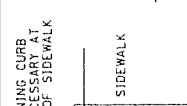


RAISED TRUNCATED DOME
2.3" Min AND 2.4" Max SPACING
TO ACCOMPANY PLANS DATED [REDACTED]

DETECTABLE WARNING SURFACE
NOTES:
1. As site conditions dictate, Case A through Case G curb ramps may be used. The use of curb ramps used in Detail A do not have to be the same. Case A through Case G curb ramps also may be used at mid-block locations, as site conditions dictate. For specific site condition configuration, including the conform to existing sidewalk, see Project Plans.
2. If distance from curb to back of sidewalk is too short to accommodate ramp and 4'-2" platform (landing) as shown in Case A, the sidewalk may be depressed longitudinally as in Case B or C or may be widened as in Case D.
3. When ramp is located in center of curb return, crosswalk configuration must be similar to that shown for Detail B.
4. As site conditions dictate, the retaining curb side and the flared side of the Case G ramp shall be constructed in reversed position.
5. In the Project Plans.
6. Side slope of ramp faces vary uniformly from a maximum of 9.0% at curb to conform with longitudinal sidewalk slope adjacent to top of the ramp, except in Case C and Case F.
7. The adjacent surfaces of transitions at curb ramps to walks, gutters, and streets shall be at the same level.
8. Counter slopes of adjoining gutters and road surfaces immediately adjacent to and within 24 inches of the curb ramp shall not be steeper than 1:20H (5.0%). Gutter pan slope shall not exceed 1% depth for each 2'-0" of width.
9. Transition gutter pan slope from 1" of depth for each 2'-0" of width to match typical gutter pan slope per Standard Plan A87A.
10. The detectable warning surface will be a rectangle as shown at back of curb, unless modified in the Project Plans. Curb ramps shall have a detectable warning surface that extends the full width and 3'-0" depth of the ramp. Detectable warning surfaces shall extend the full width of the ramp, except where the warning surfaces shall conform to the requirements in the Standard Specifications.
11. Sidewalk and ramp thickness, "T", shall be 3/2" minimum.
12. Utility pull boxes, manholes, vaults and all other utility facilities within the boundaries of the curb ramp will be relocated or adjusted to grade by the owner prior to, or in conjunction with, curb ramp construction.
13. Detectable warning surface may have to be cut to allow removal of utility covers while maintaining detectable warning width and depth.



GUTTER PAN TRANSITION
STATE OF CALIFORNIA
DEPARTMENT OF TRANSPORTATION
CURB RAMP DETAILS
NO SCALE
RSP A88A DATED JULY 21, 2017 SUPERSEDES RSP A88A DATED JULY 15, 2016 AND STANDARD PLAN A88A DATED OCTOBER 30, 2015 - PAGE 127 OF THE STANDARD PLANS BOOK DATED 2015.
REVISED STANDARD PLAN RSP A88A

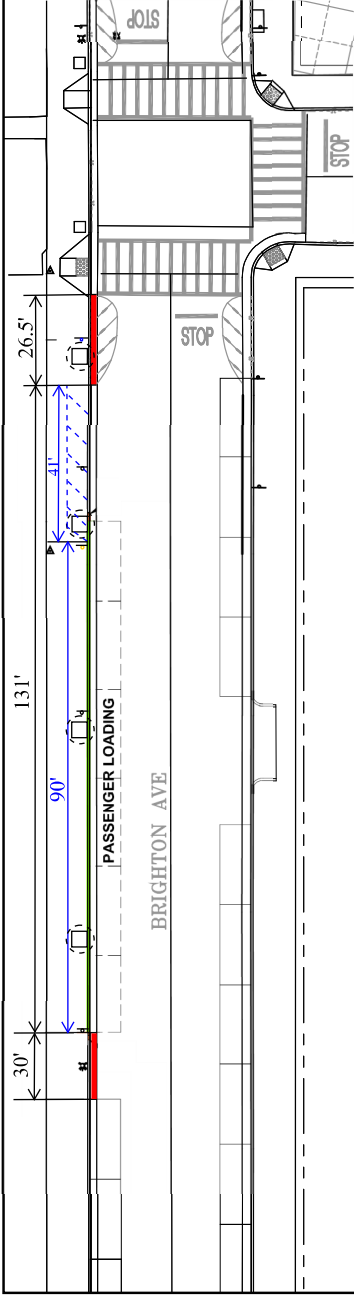


DETAIL B
TYPICAL ONE-RAMP CORNER INSTALLATION
See Notes 1 and 3

DETAIL A
TYPICAL TWO-RAMP CORNER INSTALLATION
See Note 1

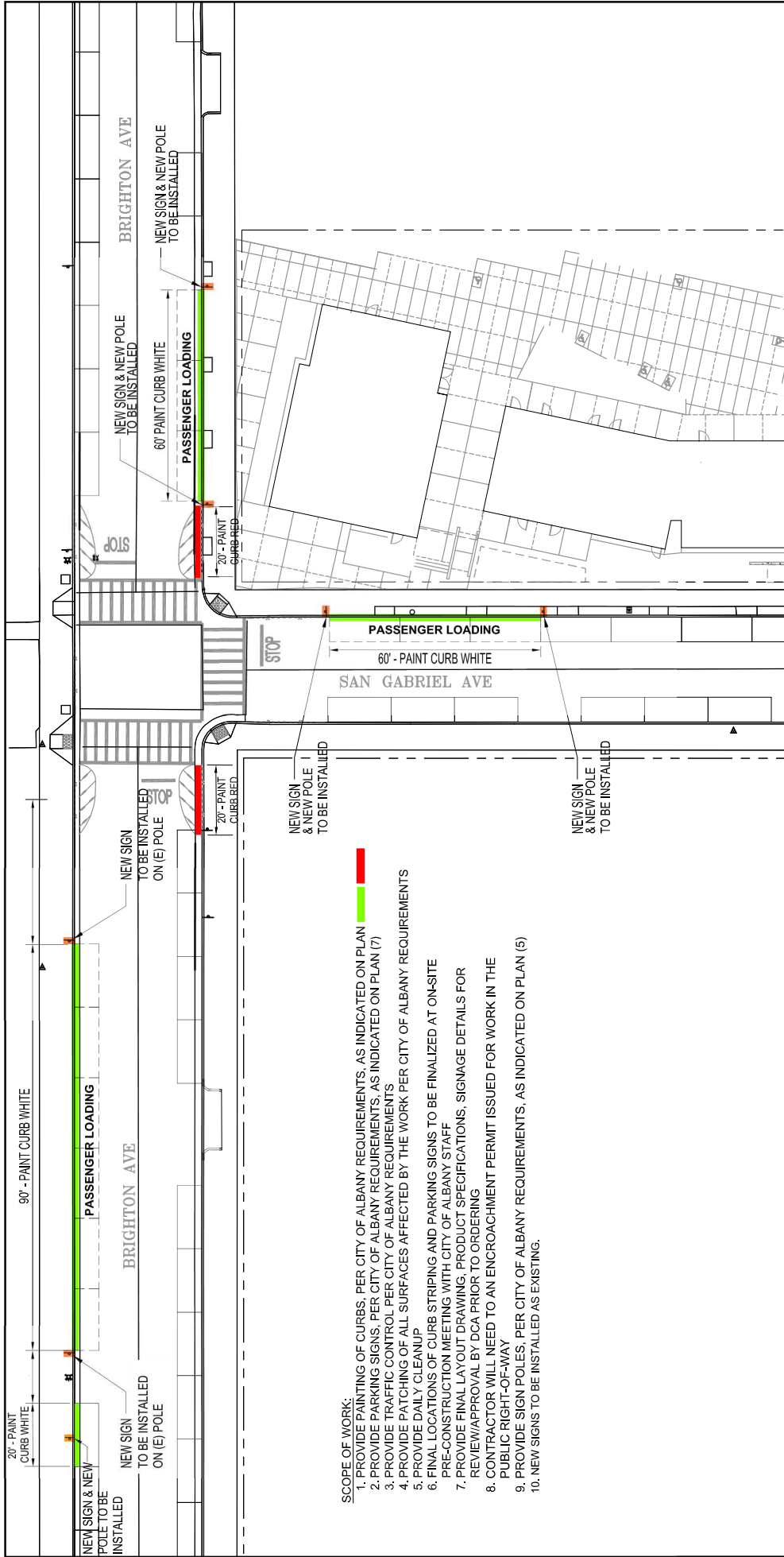
Existing Striping at Albany Middle School

Note: Items marked in blue are affected by proposed ADA parking.



FOR REFERENCE ONLY

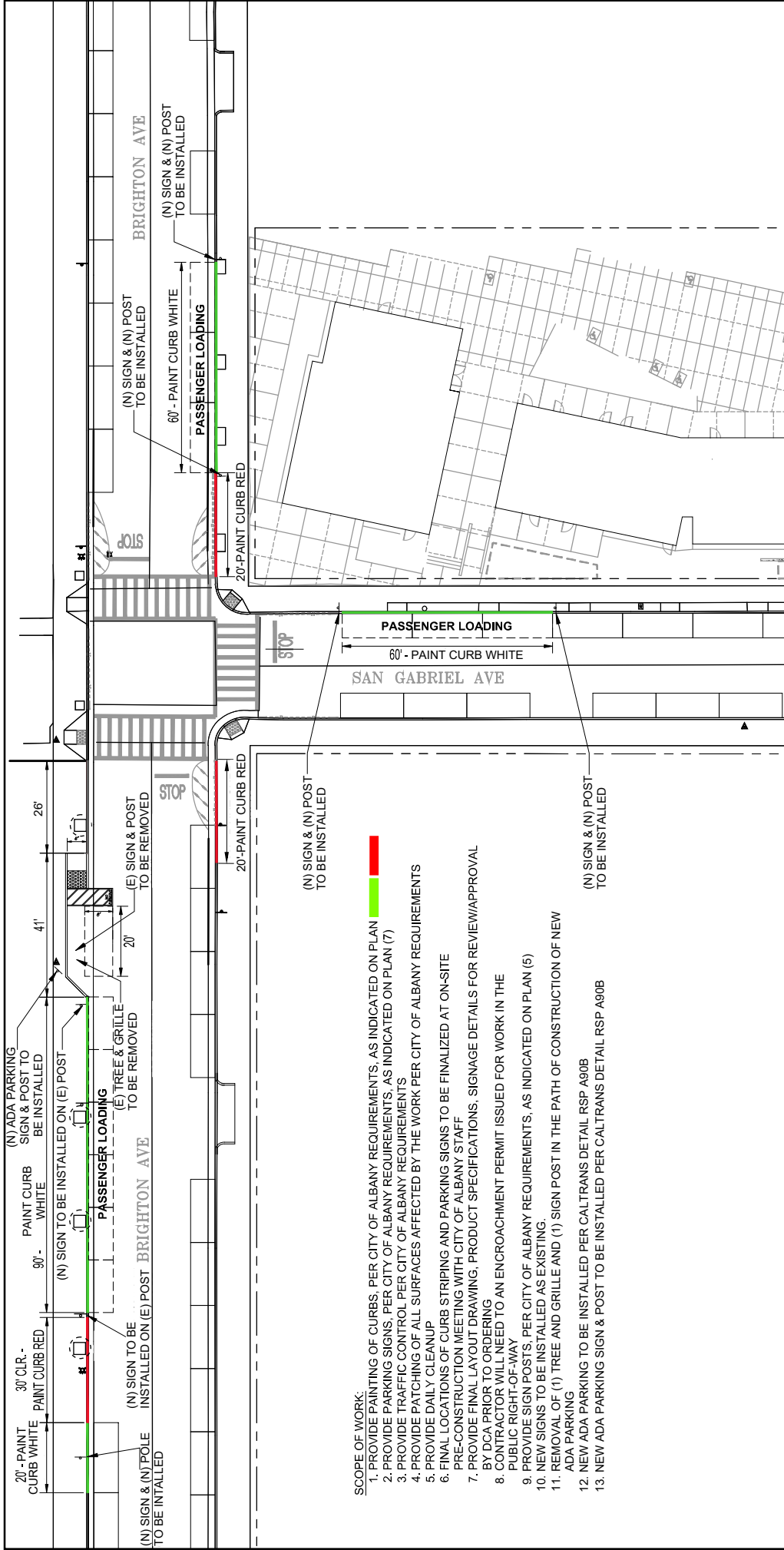
DERIVI CASTELLANOS ARCHITECTS Silicon Valley 95 S Market St, Suite 480 San Jose, CA 95113 (408) 320-4871	PROJECT AND SHEET TITLE: ALBANY UNIFIED SCHOOL DISTRICT CURB STRIPING PLAN ALBANY MIDDLE SCHOOL	LOCATION: 1295 BRIGHTON AVE ALBANY, CA 94706	JOB NO. 19.001E	SHEET NUMBER A1.01
	SCALE: N.T.S.	DRAWN BY WE	DATE 04.10.2019	REVISION 1 of 1



SCOPE OF WORK:

1. PROVIDE PAINTING OF CURBS, PER CITY OF ALBANY REQUIREMENTS, AS INDICATED ON PLAN
2. PROVIDE PARKING SIGNS, PER CITY OF ALBANY REQUIREMENTS, AS INDICATED ON PLAN (7)
3. PROVIDE TRAFFIC CONTROL PER CITY OF ALBANY REQUIREMENTS
4. PROVIDE PATCHING OF ALL SURFACES AFFECTED BY THE WORK PER CITY OF ALBANY REQUIREMENTS
5. PROVIDE DAILY CLEANUP
6. FINAL LOCATIONS OF CURB STRIPING AND PARKING SIGNS TO BE FINALIZED AT ON-SITE PRE-CONSTRUCTION MEETING WITH CITY OF ALBANY STAFF
7. PROVIDE FINAL LAYOUT DRAWING, PRODUCT SPECIFICATIONS, SIGNAGE DETAILS FOR REVIEW/APPROVAL BY DCA PRIOR TO ORDERING
8. CONTRACTOR WILL NEED TO AN ENCROACHMENT PERMIT ISSUED FOR WORK IN THE PUBLIC RIGHT-OF-WAY
9. PROVIDE SIGN POLES, PER CITY OF ALBANY REQUIREMENTS, AS INDICATED ON PLAN (5)
10. NEW SIGNS TO BE INSTALLED AS EXISTING.

<p>DERIVI CASTELLANOS ARCHITECTS</p> <p>Central Valley 3031 W March Ln, Suite 334 Stockton, CA 95203 (209) 462-2873 www.dcaia.com</p>	<p>PROJECT AND SHEET TITLE:</p> <p>ALBANY UNIFIED SCHOOL DISTRICT CURB STRIPING PLAN ALBANY MIDDLE SCHOOL</p>	<p>LOCATION:</p> <p>1295 BRIGHTON AVE ALBANY, CA 94706</p>	<p>SHEET NUMBER</p> <p>A1.01</p> <p>1 of 1</p>
	<p>SCALE: N.T.S.</p>	<p>JOB NO. 19.001E</p> <p>DRAWN BY WE</p> <p>DATE 04.10.2019</p> <p>REVISION</p>	



- SCOPE OF WORK:**
1. PROVIDE PAINTING OF CURBS, PER CITY OF ALBANY REQUIREMENTS, AS INDICATED ON PLAN
 2. PROVIDE PARKING SIGNS; PER CITY OF ALBANY REQUIREMENTS, AS INDICATED ON PLAN (7)
 3. PROVIDE TRAFFIC CONTROL PER CITY OF ALBANY REQUIREMENTS
 4. PROVIDE PATCHING OF ALL SURFACES AFFECTED BY THE WORK PER CITY OF ALBANY REQUIREMENTS
 5. PROVIDE DAILY CLEANUP
 6. FINAL LOCATIONS OF CURB STRIPING AND PARKING SIGNS TO BE FINALIZED AT ON-SITE PRE-CONSTRUCTION MEETING WITH CITY OF ALBANY STAFF
 7. PROVIDE FINAL LAYOUT DRAWING, PRODUCT SPECIFICATIONS, SIGNAGE DETAILS FOR REVIEW/APPROVAL BY DCA PRIOR TO ORDERING
 8. CONTRACTOR WILL NEED TO AN ENCROACHMENT PERMIT ISSUED FOR WORK IN THE PUBLIC RIGHT-OF-WAY
 9. PROVIDE SIGN POSTS, PER CITY OF ALBANY REQUIREMENTS, AS INDICATED ON PLAN (5)
 10. NEW SIGNS TO BE INSTALLED AS EXISTING.
 11. REMOVAL OF (1) TREE AND GRILLE AND (1) SIGN POST IN THE PATH OF CONSTRUCTION OF NEW ADA PARKING
 12. NEW ADA PARKING TO BE INSTALLED PER CALTRANS DETAIL RSP A90B
 13. NEW ADA PARKING SIGN & POST TO BE INSTALLED PER CALTRANS DETAIL RSP A90B

 <p>DERIVI CASTELLANOS ARCHITECTS</p> <p>Silicon Valley 3031 W March Ln, Suite 334 Stockton, CA 95203 (209) 462-2873 www.dcaaisa.com</p>	<p>PROJECT AND SHEET TITLE:</p> <p>ALBANY UNIFIED SCHOOL DISTRICT CURB STRIPING PLAN ALBANY MIDDLE SCHOOL</p>	<p>JOB NO.</p> <p>19.001E</p>	<p>SHEET NUMBER</p> <p>A1.01</p>
	<p>LOCATION:</p> <p>1295 BRIGHTON AVE ALBANY, CA 94706</p>	<p>DRAWN BY</p> <p>DK</p>	<p>DATE</p> <p>06.27.2019</p>

SCALE: N.T.S.

© 2015 California Department of Transportation
All Rights Reserved

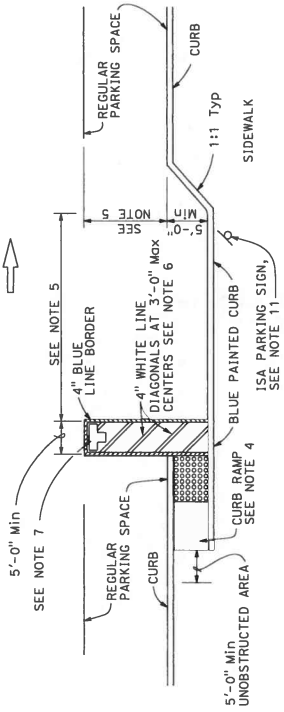
DIST	COUNTY	ROUTE	POST MILES	SHEET TOTAL
			TOTAL PROJECT	NO. SHEETS

H. Paul Condon
REGISTERED CIVIL ENGINEER
No. 41957
EXPIRES 3-31-16

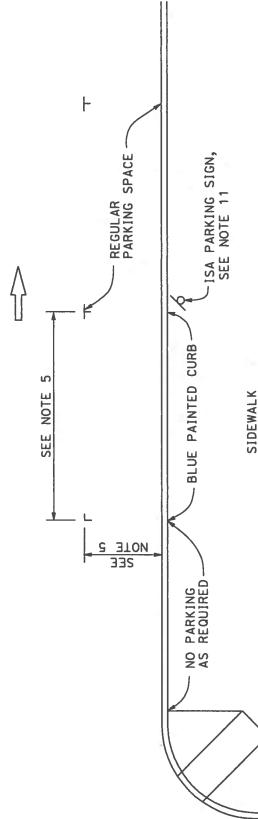
PLANS APPROVAL DATE
JULY 3, 2015

THE STATE OF CALIFORNIA OR ITS OFFICERS
DO NOT WARRANT, GUARANTEE, OR
MAKE ANY REPRESENTATION AS TO THE
ACCURACY OR COMPLETENESS OF ANY
COPIES OF THIS PLAN SHEET.

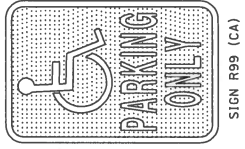
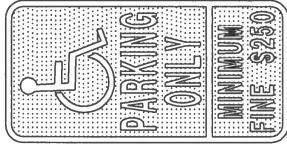
TO ACCOMPANY PLANS DATED _____



CONVENTIONAL
(See Note 9)



**RESTRICTED RIGHT OF WAY WIDTH
ON-STREET PARKING**
(Parallel parking)
(See Note 10)



NO PARKING

PAVEMENT MARKING
(See Note 7)

NOTES:

1. Parking spaces shall be so located that persons with disabilities are not compelled to wheel or walk behind parked vehicles other than their own.
2. Surface slopes of accessible on-street parking spaces shall be the minimum feasible.
3. Where Plaque R99B (CA) or Sign R99C (CA) are installed, the bottom of the sign or plaque panel shall be a minimum of 1'-0" above the surrounding surface.
4. Curb ramps shall conform to the details shown on Revised Standard Plan RSP A88A.
5. Accessible on-street parking spaces shall not be smaller in length or width than that specified by the local jurisdiction for other parking spaces, but not less than 20'-0" in length and not less than 8'-0" in width.
6. Blue paint, instead of white, may be used for marking accessibility aisles in areas where snow may cause white markings to not be visible.
7. The words "NO PARKING", shall be painted in white letters no less than 1'-0" high on a contrasting background and located so that it is visible to traffic enforcement officials. See Revised Standard Plan RSP A24E for square foot area for painting the words "NO PARKING".
8. There shall be no obstructions on the sidewalk adjacent to and for the full length of the parking space, except for the ISA parking sign shown.
9. The Conventional detail should be the primary choice of accessible on-street parking. However, if the sidewalk lacks adequate space to construct a standard curb ramp, the Restricted Right of Way detail should be used.
10. If the Restricted Right of Way width detail is selected and it conflicts with a bus stop or other uses, this detail may apply to the other end of the block.
11. Accessible Parking Only Sign shall be Sign R99C (CA) or Sign R99 (CA) with Plaque R99B (CA).

LEGEND

ISA = International Symbol of Accessibility

STATE OF CALIFORNIA
DEPARTMENT OF TRANSPORTATION
**ACCESSIBLE PARKING
ON-STREET**

NO SCALE

REVISED STANDARD PLAN RSP A90B

REVISED STANDARD PLAN RSP A90B
RSP A90B DATED JULY 3, 2015 SUPERSEDES RSP A90B DATED JULY 19, 2013 SUPERSEDES
AND PLAN A90B DATED MAY 20, 2011 - PAGE 124 OF THE STANDARD PLANS BOOK DATED 2010.

Survey of dead trees that need to be removed and replaced – August 2019
List was presented to PROS on Sept. 12, 2019

- 1) 955 Castro on Madison - Redbud
- 2) 512 Curtis - Camphor
- 3) 1036 Curtis - Redbud
- 4) 1120 Portland (on Kains) - Redbud
- 5) 836 Key Route, opp – Trident Maple
- 6) 840 Key Route, opp – Trident Maple
- 7) 1131 Neilson – Australian Willow
- 8) 955 Ordway – Trident Maple
- 9) 1006 Ordway - Hawthorne
- 10) 555 Pierce, opp – coast Live Oak
- 11) 712 Pomona Chinese Pistache, (tree fell, dead since 2011)
- 12) 1244 Portland – redbud, recently dead
- 13) 1467 Portland (on Curtis) – Trident Maple
- 14) ~~1545 Posen~~ – Purple Leaf Plum (this is a Berkeley address)
- 15) 1451 Solano (on San Carlos) – Trident Maple
- 16) 1044 Stannage - Redbud
- 17) 738 Talbot – Flowering Cherry
- 18) 1441 Thousand Oaks (on San Carlos) - Redbud
- 19) 1008 Ventura – Hawthorne (removed, by owner?)
- 20) 1221 Washington (on Talbot) – Bradford Pear

Additional dead trees to be removed and replaced (as of 9/18/19):

- 1003 Curtis - Buckeye
- 934 Fillmore – Jacaranda (<3" diameter, removed by UF)
- 923 Ramona – Crape Myrtle (<3" diameter, removed by UF)
- 945 Castro – Flowering Cherry (<3" removed, by UF)
- 732 Madison – Redbud (<3" diameter, removed by UF)

**CITY OF ALBANY
PARKS, RECREATION AND OPEN SPACE COMMISSION
STAFF REPORT**

Agenda Date: September 12, 2019

SUBJECT: Proposal to Convert Ocean View Tennis Courts to dedicated pickleball Courts

REPORT BY: Chelle Putzer, Recreation & Community Services Director

STAFF RECOMMENDATION

That the Commission receive public feedback, discuss and possibly take action on one of the following options:

- 1) Approve the proposal to convert the Ocean View Tennis courts to dedicated pickleball courts or approve with modifications (approval of between 4-8 courts) and direct staff to return to a future meeting with court design and potential funding sources;
- 2) Take no action on the proposal/no change to Tennis Courts at Ocean View;
- 3) Give staff direction to provide more information and defer the item to a future meeting

BACKGROUND

Pickleball is a sport that combines elements of tennis, badminton and ping pong. It is played with a perforated plastic ball like a wiffle ball and a composite or wooden paddle. First created in 1965, it is a multi-generational game that according to the Sports and Fitness Industry Association had 3.1 million players in 2018 which was a 12% increase over 2017.

In 2012, Albany was the trailblazer in starting the very first pickleball program anywhere west of the Berkeley Hills. The original sessions at Ocean View were on Tuesday afternoons and each week the pickleball lines were marked with masking tape for 1 court, then 2, 3, and 4 courts as attendance grew. In the fall of 2015, the Parks, Recreation and Open Space Commission approved the addition of painted pickleball lines for four courts at Ocean View Park. In January of 2015, there was enough demand the City added a second weekly session, on Sundays at the Albany High School Gym. The pickleball group continued to grow beyond the City-run program over the past four years and has expanded regionally. In August of 2019, the City of Berkeley opened four dedicated courts at Cedar Rose park which has increased the number of available pickleball sessions to twice a day—rotating between Cedar Rose, Ocean View and Castro Park in El Cerrito.

The pickleball group reports an increase in their mailing list from 180 to 307 since the opening of Cedar Rose courts.

DISCUSSION

The City of Albany has a total of eight tennis courts: two lighted tennis courts at Ocean View Park, four lighted tennis courts at Memorial Park and two non-lighted tennis courts at Terrace Park. Courts can be reserved through the Recreation and Community Services Department. The hourly rates, as set forth by the City of Albany Master Fee Schedule, are:

- Rental: \$8/hour (Residents); \$10/hour (Non-residents)
- Private/Commercial Use: \$20/ hour (Private instruction, 3rd party classes/camps)
- Pickleball Rental: \$16/hour (Residents); \$20/ hour (Non-residents) *Due to the layout and equipment, pickleball must rent both courts because concurrent use by tennis is not possible)

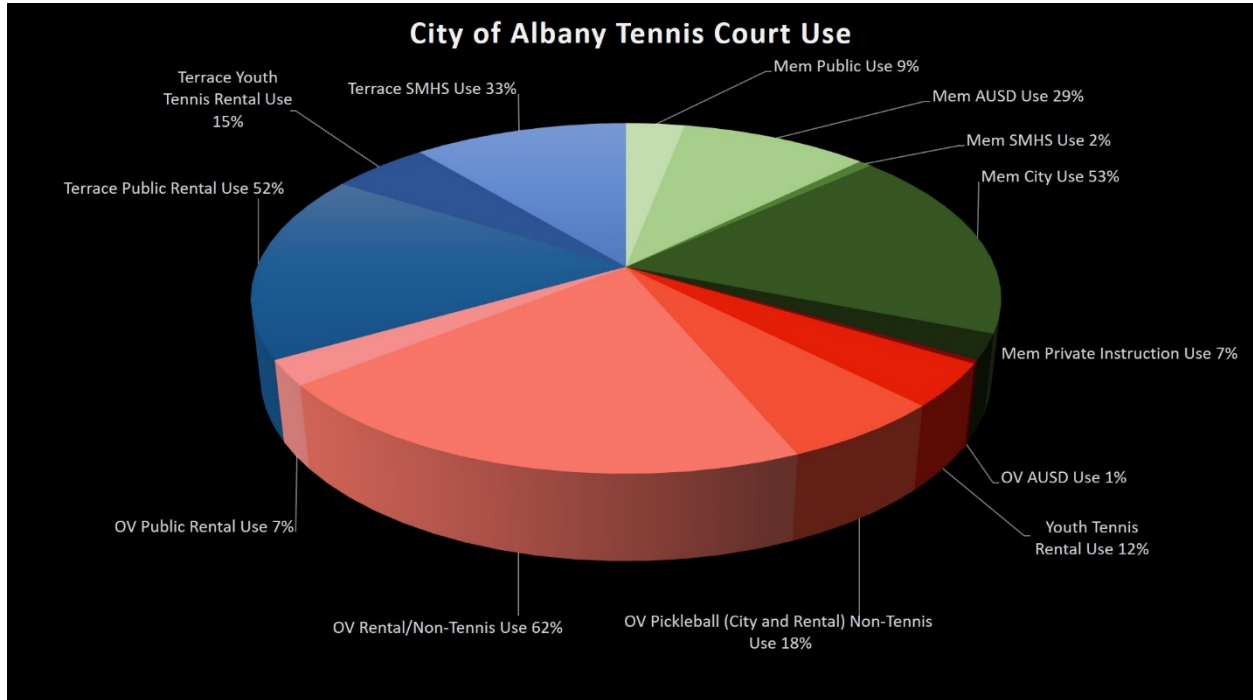
The Memorial Park courts are the highest used courts by the public, city camps/classes and High School Tennis teams. Due to its proximity to Albany High School, the courts are used by PE classes and the Albany High School Men's and Women's Tennis teams. Saint Mary's High School Tennis teams also rent Memorial Park courts for their matches. For High School tennis matches, four courts are required. Terrace Park courts are primarily used by the public, an after-school tennis class (rental) and Saint Mary's High School Tennis practice. Ocean View Courts are used by the public, a pickleball group, the City's Adult Sports Drop-in pickleball, an after-school tennis class (rental) and Fitness Boot Camps.

The following chart includes data for official reservations made through the Department's facility reservation software from July 2017 to July 2019. In the chart below, the blue is Terrace Park, green is Memorial Park and red is Ocean View Park. It is important to note that drop-in use (reservation made) of the Tennis Courts is very popular and cannot be tracked. The use of the courts by Albany Unified School District (AUSD) is free per the Joint Use Agreement between the City and AUSD.

The type of use (tennis vs non-tennis) at Memorial and Terrace is 100% tennis, while Ocean View is 20% tennis vs 80% non-tennis. The amount of tennis use vs non-tennis use at Ocean View Park courts leans heavily toward alternative use of the courts mainly due to the low number of reservations made over the years for tennis use. To maximize the use of the courts and generate revenue, the Department started scheduling alternative uses on the courts so that the courts wouldn't sit empty. Converting the courts to pickleball would not impact the Boot Camp or City Use of the courts. In the 2019-2020 seasons, please note that the "Youth Tennis After-School Rental has switched to teaching pickleball and the Saint Mary's High School rental at

Terrace has been cancelled. The Youth Tennis after-school program switching their program to a pickleball class will shift the percentage of non-tennis use closer to 93% at Ocean View.

Court Reservations July 2017 to July 2019:



The local group of pickleball players have been tracking their attendance over the past year and note that at least 180 difference pickleball players have come to play at the Ocean View and Albany High School Gym. Each week, 20-40 players go to the gym and 12-20 at each of the sessions at Ocean View. Players who have participated range in age from 10-90 years of age with an average age between 50-75 years old. According to the Healthy Alameda County website 41% of Albany’s population is between the ages of 45-84 years old.

The Recreation and Community Services Adult Sports Coordinator, Bell, offers an introductory pickleball lesson to any newcomer. In 2018, Bell taught 148 new players, and is averaging 8 new players a week in 2019.

The City has made several improvements to the Tennis Courts in Albany and the Public Works Department has a weekly routine maintenance schedule for each of the courts. Improvements over the past 7 years include:

- Conversion of Memorial Park lights to LED
- Surface rehab of Memorial Park courts 3, 4

- Repaired Ocean View Park light poles
- Patch/repairs at Ocean View court surface
- Resurfaced Terrace Park courts
- Miscellaneous bench, nets, windscreen replacements

ANALYSIS

The standard size of a pickleball court is 20' wide x 44' long, which allows potentially four pickleball courts to overlay one Tennis Court. Since Ocean View Park has two tennis courts, the maximum number of courts that would fit would be eight. Currently, the four painted pickleball courts at Ocean View consist of a pickleball court on the middle of each tennis court and a court on each end of the tennis courts. The courts in the middle utilize the existing tennis nets and the courts on the ends require temporary nets to be set up for play. Although this layout attempted to reduce the number of nets to be set up and limit the number of overlapping courts lines (tennis vs pickleball) it has not been an ideal layout. The existing tennis nets are lower than a standard pickleball net and the two courts on the ends are oriented facing east and west which causes sun to be in the eyes of the players.

Existing Ocean View Pickleball Layout:



Standard Pickleball 8 Court Layout (on 2 Tennis Courts):



The installation of eight courts at the Ocean View would allow for the City to host tournaments and league play. The pickleball group recently held an 8-week league this summer which had to be held at the six El Cerrito courts due to its popularity and need for more than four courts. Being able to offer league play or tournaments through the Recreation and Community Services Adult Sports program would generate additional revenue for the Department through registrations and/or tournament fees. Court rental fees would also be added to the Master Fee Schedule and revenue would be generated from those reservations.

While Ocean View Courts can accommodate eight courts, it may also be possible to convert one tennis court to four pickleball courts and maintain the existing tennis court. Although the main entry to the courts is a gate on the northwest end of the courts, there is an additional gate on the northeast that could be utilized. Some planning would need to be done to provide a separation of the courts for concurrent tennis and pickleball play.

Ocean View Park is the site for most of the City's Adult Sports leagues that run 4 to 5 nights per week (Softball, Kickball, 5 Aside soccer). Ocean View Park is already home to the Friendship Club, youth and adult sports and the community garden—the addition of new Bocce courts, new

outdoor table tennis and potentially dedicated pickleball courts would completely activate all areas of the Park.

Community outreach for this agenda item included:

- Email list all court users who have made a reservation with us since July 2017 (40 recipients).
- Public meeting notice signs posted at all 3 City courts
- Email to pickleball representatives
- Agenda posting locations at Community Center, Senior Center, City Hall
- Agenda posted on City website and notification categories: Parks, Recreation and Open Space Commission (299 subscribers), Public Meetings (298)

FINANCIAL IMPACT

Staff requested one estimate of \$43,400 for converting two tennis courts to eight dedicated pickleball courts with eight pickleball nets installed. Additional estimates would need to be obtained. The pickleball group has put together a fundraising campaign for the courts that has generated \$8,000 to date. No funding source has been identified at this time.