



PARKS AND RECREATION COMMISSION MEETING AGENDA
Thursday, January 14, 2016, 7:00 pm
City Hall Council Chambers, 1000 San Pablo Avenue

1. CALL TO ORDER

2. APPROVAL OF ACTION MINUTES: December 10, 2015

3. PUBLIC COMMENT

For persons desiring to address the Commission/Committee/Board on an item that is not on the agenda please note that each speaker is limited to three (3) minutes. The Brown Act limits the Committee's ability to take and/or discuss items that are not on the agenda; therefore, such items are normally referred to staff for comment or to a future agenda.

4. ANNOUNCEMENTS/DIRECTOR'S REPORT

5. PUBLIC HEARING/PRESENTATIONS

5-1: General Plan Update: The Draft General Plan and Draft Environmental Impact Report (DEIR) was released in November 2015 for public review. The DEIR comment period will be open through January 25, 2016. Staff will present the Plan highlights pertaining to Parks & Recreation at the meeting. The Planning and Zoning Commission and the City Council will hold public hearings on the General Plan and EIR before formal adoption in spring 2016. Documents available at: <http://albany2035.org/documents/>.

Recommended Action: Receive presentation and Public Comment

6. DISCUSSION AND POSSIBLE ACTION ITEMS ON MATTERS RELATED TO THE FOLLOWING ITEMS:

6-1: Ohlone Greenway Design: Restoration Design Group will give a presentation.

Recommended Actions:

1. That the Commission recommend a preferred concept direction to move into the design into the next phase.
2. That the Commission approve the planting of fruit and nut trees by the California Rare Fruit Growers along the eastern strip of the Ohlone Greenway as described in the Memo.
3. That the Commission set a Special Meeting Date for the 4th week of February to review the 35% Plans for the Ohlone Greenway.

Attachments: RDG December Meeting Notes, Memo from California Rare Fruit Growers

6-2: Measure WW Project Funding Update: Staff will update the Commission on the status of the Measure WW priority project list and funding sources.

Recommended Action: Information only

Attachments: Staff Report

7. FUTURE AGENDA ITEMS

(Commissioners announce of requests for future agenda items. No public comment will be taken on announcement of future agenda items).

Next Meeting: Thursday, February 11, 2016, 7:00 pm, City Hall Council Chambers, 1000 San Pablo Ave. Please note: There are no public meetings in August.

8. ADJOURNMENT

NOTE: *The Commission/Committee/Board packet is available for public inspection at the Albany Community Center, Senior Center, and City Hall. The agenda and supporting staff reports, if available, can be found on our web page at www.albanyca.org. If you provide your name and address when speaking before the Commission/Committee/Board it will become part of the official public record, which will be posted on the Internet.*



PARKS AND RECREATION COMMISSION MEETING AGENDA

Thursday, December 10, 7:00 pm

City Hall Council Chambers, 1000 San Pablo Avenue

1. **CALL TO ORDER: 7:02 pm: Present:** *Chair Abbott, Vice Chair Pearson, Commissioners Tanner, and Yee;*
Absent: *Commissioner Larsen*

2. **APPROVAL OF ACTION MINUTES:** November 12, 2015: ***Motion made by Commissioner Tanner to approve the minutes; Seconded by Vice Chair Pearson; All in favor; Motion carried.***

3. **PUBLIC COMMENT**

For persons desiring to address the Commission/Committee/Board on an item that is not on the agenda please note that each speaker is limited to three (3) minutes. The Brown Act limits the Committee's ability to take and/or discuss items that are not on the agenda; therefore, such items are normally referred to staff for comment or to a future agenda.

4. **ANNOUNCEMENTS/DIRECTOR'S REPORT**

5. **PUBLIC HEARING/PRESENTATIONS**

5-1: Ohlone Greenway Design Workshop: Restoration Design Group gave a presentation about the Ohlone Greenway Project including budget (\$300,000), existing conditions, section by section analysis and illustrations of possible features and treatments. The Commission and community members were asked to vote on priorities and to provide input/comments for various features along the Greenway.

No action was taken.

6. **FUTURE AGENDA ITEMS**

(Commissioners announce of requests for future agenda items. No public comment will be taken on announcement of future agenda items).

Next Meeting: Thursday, January 14, 2016, 7:00 pm, City Hall Council Chambers, 1000 San Pablo Ave. Please note: There are no public meetings in August.

7. **ADJOURNMENT: 8:40 pm**

NOTE: *The Commission/Committee/Board packet is available for public inspection at the Albany Community Center, Senior Center, and City Hall. The agenda and supporting staff reports, if available, can be found on our web page at www.albanyca.org. If you provide your name and address when speaking before the Commission/Committee/Board it will become part of the official public record, which will be posted on the Internet.*



Results of Ohlone Greenway Landscape Design Services Public Outreach Activities at December 10, 2015 City of Albany Parks and Recreation Commission Meeting

Description of Event

On December 10, Restoration Design Group (RDG) led a design exercise with the City of Albany Parks and Recreation Commission as part of the public process associated with the Ohlone Greenway Landscape Design Services project. Four commissioners, two City staff, and approximately ten member of the public participated in the event.

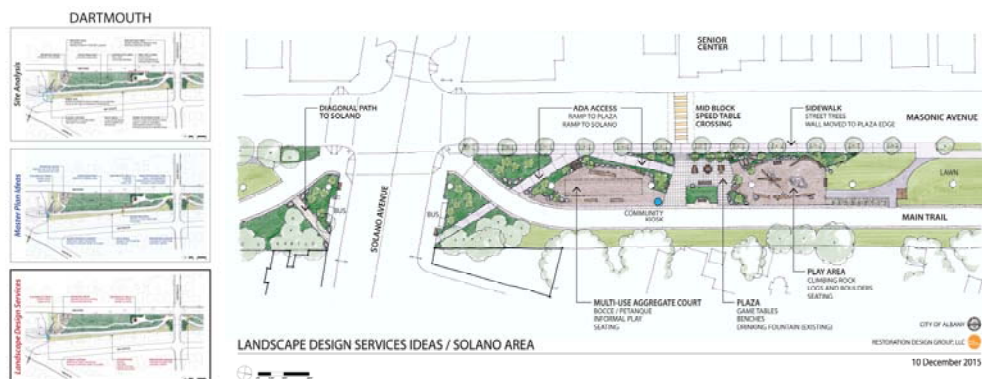
The Parks and Recreation Commission officially called the meeting to order. Recreation & Community Services Director Chelle Putzer described the Ohlone Greenway Landscape Design Services project and introduced RDG Principal landscape architect Bob Birkeland and Restoration Planner Rich Walkling. Bob and Rich presented an overview and described the activities for the evening.

The event included multiple activities to solicit community input into the design process. Participants were provided with five blue dot stickers each to “vote” for features they liked as shown in block-by-block diagrams and on a diagram focused on the Solano area (see examples below). In addition to the stickers, participants were given sticky-notes and pens and encouraged to comment on the designs.

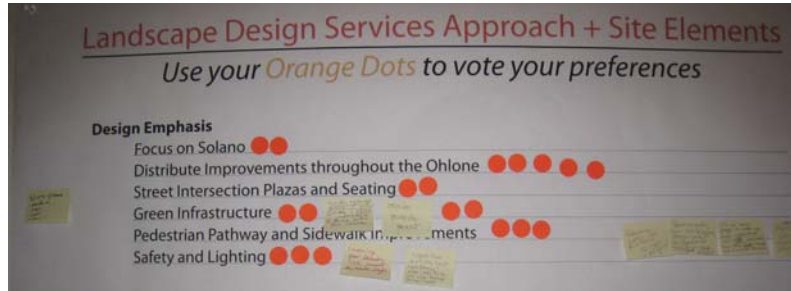
RESTORATION DESIGN GROUP, LLC

BERKELEY
2612B 8th Street
Berkeley
California 94710
510.644.2798

MOUNT SHASTA
P.O. Box 223
Mount Shasta
California 96067
530.918.8119



Participants were also given five orange dot stickers to “vote” for and comment on design elements (see example photo below).



Finally, participants were given the opportunity to submit comments in a suggestion box, however, no comments were submitted.

Commissioners and the public spent approximately 30-40 minutes in conversations pertaining to the analysis and designs presented. The group reconvened and RDG provided a quick summary of some of the results and the commissioners made comments and asked additional questions.

The results of the evening’s outreach activities are presented below.

Results of Design Elements Activity

Participants both voted and commented on a list of design elements that might be included in the Ohlone Greenway Landscape Design Services project. A vote tally is shown below and comments follow.

Table 1. Tally of Design Elements Vote

	Votes	%
Design Emphasis		
Distribute Improvements throughout the Ohlone	5	6.1%
Green Infrastructure	4	4.9%
Pedestrian Pathway and Sidewalk Improvements	3	3.7%
Safety and Lighting	3	3.7%
Focus on Solano	2	2.4%
Street Intersection Plazas and Seating	2	2.4%
Activities		
Par Course Route (exercise stations dotted along the Ohlone)	4	4.9%
San Gabriel Park Small Kids Play Area	4	4.9%
Bocce Courts	3	3.7%
Solano North Small Kids Play Area	3	3.7%

Par Course Court (exercise machines in central location)	1	1.2%
Petanque Courtyard	1	1.2%
Signage		
Wayfinding	3	3.7%
Creeks	1	1.2%
Interpretive	0	0.0%
Regulatory	0	0.0%
Site Furnishings		
Benches	5	6.1%
Trash Receptacles	4	4.9%
Bike Fix Station	4	4.9%
Tables	2	2.4%
Public Posting Areas	2	2.4%
Drinking Fountains	1	1.2%
Fencing and Screening	0	0.0%
Art		
Murals	5	6.1%
Sculpture sites along the Ohlone	4	4.9%
Planting		
Orchards/Edible Landscape	10	12.2%
Bay-Friendly Demonstration Areas	2	2.4%
Community Gardens	2	2.4%
Improved Landscape	1	1.2%
Improved Lawns	0	0.0%
Mulch at Narrow	0	0.0%
Other (Write-in)		
BART Noise Abatement	1	1.2%
TOTAL VOTES	82	

Design Elements Comments (public comments are italicized)

Design Emphasis

- Green Infrastructure
 - *Consider permeable pavement*
 - *Consider cisterns and re-use of water 1) Greenway is extremely impermeable and 2) re-use better than release*
- Pedestrian Pathway and Sidewalk Improvements
 - *Pedestrian paths need resurfacing at least – dangerous*
 - *Pedestrian paths (other than bike/ped straight paths) are important for enjoyment and shade*
 - *If we want people to walk, we need: paths that are safe, pleasurable, have some shade access, and occasional benches*
 - *Yes, steps from Senior Center crosswalk very important*
- Safety and Lighting
 - *Crossing for Senior Center must be made safe*

- *Lights that are better timed? Light sensing? Have issues with too dark after daylight savings changes*
- Other
 - *Blocks with themes – gardens, trees, creek, urban*

Activities

- Par Course Court (exercise machines in central location)
 - *Don't invest in something expensive that will break*
- Par Course Route (exercise stations dotted along the Ohlone)
 - *Exercise parcourse is doable – had it before along greenway and not well used*
 - *Did not work in the past – they rotted*
 - *Yes to exercise machines*
- Bocce Courts
 - *Bocce NO!*
 - *Bocce not suited for that area*
 - *Can bocce be more multi-purpose? Cornhole? Horse shoes?*
 - *Bocce court bad idea – too much space*
 - *Fun games for senior citizens*
 - *Like the idea of multi-purpose bocce area*
- Petanque Courtyard
 - *Petanque needs less space than bocce*
- San Gabriel Park Small Kids Play Area
 - *Solano play area more important but small climbable thing at San Gabriel would be great*

Signage

- Wayfinding
 - *Wayfinding on BART pillars*

Site Furnishings

- Trash Receptacles
 - *Next to seating*
- Public Posting Areas
 - *Bulletin board*
- Bike Fix Station
 - *No to this, won't be used*
 - *No to bike fix station*
 - *Bike pump sturdylike – one Solano/SF*
 - *Put public pump (Like AS+Rs at Solano/Santa Fe) – Corner busy and will lit for security*
- Other
 - *How about a public restroom?*
 - *Down the line public restrooms*

- *Add mailbox for bikes/peds beside trail*
- *Like mailbox idea at Solano*
- *Mailbox - yes*

Art

- Murals
 - *Paint the BART columns maybe at corners only if want smaller scope*
 - *I love the murals*

Planting

- Orchards/Edible Landscape
 - *Avocados please*
- Improved Landscape
 - *Clusters of plants to provide year-round color*
 - *More wildflower meadows*
 - *Replant flowering crab apple trees*
 - *Consider boulders as landscape element throughout Ohlone Greenway*
- Improved Lawns
 - *Less grass*
 - *One good lawn – just one*
- Bay-Friendly Demonstration Areas
 - *Block with examples of approved street trees*
 - *Drought tolerant demonstration garden*
- Community Gardens
 - *Garden demonstration area – space for classes, demonstrations*
 - *Do gardens need to be fenced in?*

Other (Write-in)

- *BART noise abatement*
- *Regular (2 x mo) anti-graffiti action*

The votes and comments suggest a slight preference for spreading design elements throughout the Greenway, with an emphasis on seating, art, orchards, and wayfinding among those present at the meeting.

Results of Block-by-Block Activity

The table below summarizes the votes by theme or category.

Table 2. Summary of Block-by-Block Voting

Theme/Category	Votes	%
Eastern Edge	11	21%
Art	10	19%
Seating	6	12%
Other	5	10%
Wayfinding	4	8%

Trees	3	6%
Lawn/Landscaping	3	6%
Creek	2	4%
Crossings	2	4%
Plaza	2	4%
Social Paths	2	4%
Kiosk	2	4%
TOTAL	52	100%

When categorized by theme, the votes suggest a strong emphasis towards addressing the eastern edge of the Greenway, art work, and seating. The eastern edge category is a catch all for multiple design elements proposed for that section of the greenway including seating, orchards, habitat, and par course. Its high score may in part be due to the fact that it shows up in every block along the greenway. Voting results and comments for each below (south to north) are presented below. Public comments are in italics.

Dartmouth

Dartmouth	Votes
Dartmouth - Redwood Grove	3
Dartmouth - Circle	3
Dartmouth - Lawn	1
Dartmouth - Codornices Creek	1
Dartmouth - Eastern Edge	1

- Codornices Creek
 - *Design so kids can play in the creek*
- Creek Trail Crossing
 - *How about a blue fish rather than just a blue band?*
 - *How durable is blue paint vs. blue tile?*
 - *I like the blue tile idea – maybe local artist?*
- Lawn
 - *Dogs are destroying the grass – not a dog park*
- Eastern edge
 - *Fruit trees along the whole greenway*
- Wayfinding Signage
 - *Artistic wayfinding signage on intersection BART pillars*

Dartmouth/Marin

Dartmouth/Marin	Votes
Dartmouth/Marin - Art	3
Dartmouth/Marin - Eastern Edge	3
Dartmouth/Marin - Trees	2
Dartmouth/Marin - Bench Replacement	1

- Trees/Plants
 - *I miss the flowering crab apple trees*
 - *Hate the paper-bark trees*
 - *Sweet gums or pines for street trees*
 - *Prefer interesting clusters of tree species – do not over-do orchards*
- Other
 - *Art murals on BART pillars*
 - *Replace this month [mid-block]*

Marin

Marin	Votes
Marin - Eastern Edge	3
Marin - Seating	2
Marin - Art	2
Marin - Wildflowers	1
Marin - Wayfinding	1
Marin - Plaza	1

- Trees/Plants
 - *Wild flowers at all intersections*
 - *Orchards wherever possible*
 - *Fruit trees not as hardy – do not over-do*
- Other
 - *Move this mailbox (at Marin) to be accessible by bike from the path – a ped/bike mailbox*

Solano (also see Solano focused activity in next section)

Marin	Votes
Solano - Art	2
Solano - Community Kiosk	2
Solano - Eastern Edge	2
Solano - Plaza	1
Solano - Wayfinding	1
Solano - Crosswalk	1

- Wayfinding/Signage
 - *Wayfinding (at least cross streets) at every intersection*
- Other
 - *Be conscious of shadows caused by trees between lights and bike/ped path*

Washington

Washington	Votes
Washington - Art	2
Washington - Social Paths	2

- Social paths
 - *Social path here [at Portland] gets a lot of use – keep it*
 - *I second suggestion for social paths*
 - *Voting for all social paths*
 - *I second this*
- Wayfinding
 - *Prominent street signs like in El Cerrito section*
- Other
 - *Grass is not drought-friendly, but with residents losing their lawns, the public grass becomes more important*

San Gabriel

San Gabriel	Votes
San Gabriel - Municipal Park	2
San Gabriel - Eastern Edge	2
San Gabriel - Garfield Crossing	1
San Gabriel - Art	1

- Garfield
 - *Not sure why it's ignored – 1) lots of school kids walk up Garfield and cross to Greenway (i.e., jaywalk) - 2) nice lawn area then is used often by families to play ball but not simple access from across street – also a pain for biking*
- Wayfinding
 - *Wayfinding signage (street names) on BART pillars*
- Art
 - *Climbable public art?*
- Trees/Plants
 - *Large trees on east side of San Gabriel for a visual barrier (redwoods, Cedar deodar, Ilex decidua, Melaleuca – paperbark tea trees)*
- Paths
 - *Meandering paths are under-utilized – clear them out? Enhance direct paths with formal social paths*
 - *Improve this path [to San Gabriel] – well used but currently dirt and lumpy so people walk on grass*

Brighton

Brighton	Votes
Brighton - Landscape	1
Brighton - Wayfinding	1
Brighton - Apartment Fence	1
Brighton - Social Paths	1
Brighton - Gateway/Creek Marker	1

- Paths

- Like social paths, especially Brighton – lots of students take them
- Formalize social paths
- Tint the pavement instead (paint wears off)
- Wayfinding
 - Move this sign [north of Brighton] – it is in the running path
- Trash
 - Trash fence would be great – this is a problem area [at apartments south of Brighton]
 - Need more trash cans/trash capacity here [at Brighton] – it overflows and lead to litter in concrete gully
- Other
 - Like the idea of restrooms at north end or Solano

Results of Solano Focused Activity

RDG presented separate master plan and concept designs of the Solano Avenue area of the Greenway. Voting results and comments are presented below.

Solano Area	Votes
Solano Area - Play Area	7
Solano Area - Plaza	2
Solano Area - ADA Access Ramp	1
Solano Area - Diagonal Path - Solano to Masonic	1
Solano Area - Bocce/Petanque	1
Solano Area - Mid-block Crossing	1
Solano Area - Sidewalk	1
Solano Area - Game Tables	1

Solano Area Master Plan Comments

- Play Area
 - Looks like fun
 - Like this placement
 - Like this placement too - puts activity closer to Solano
- Plaza South of Solano
 - Would prefer bike path through here more clear
 - Love seating bus integration
- Plaza North of Solano
 - Community space at Solano – farmers’ market, business and community events
- Main Trail
 - More dirt paths – less pavement
- Mid-block Crossing
 - Like easy access, inviting, sidewalk to encourage safe street crossing (also for nursery school)
- Par course Court

- *Spread out par course elements through greenway*
- *Can we do both a focused par course and spread out?*
- Lawn
 - *Fescue grass*

Solano Area Landscape Design Comments

- Diagonal Path
 - *I don't think this is necessary - use space for other placemaking (which might include path but would not be its primary purpose)*
- Multi-use Aggregate Court
 - *Worried this will be dead zone - put play area closer to Solano*
- Play Area
 - *Love this*
 - *Like idea for children with low maintenance*
 - *Picnic tables for lunch*
 - *Looks like fun area*
- Existing Plaza Drinking Fountain
 - *Needs fixing*

Votes and comments suggest a preference for a play area to be included near Solano and the Senior Center.

Albany Ohlone Greenway Fruit Trees

Planning Memo

Barath Raghavan
Member, California Rare Fruit Growers
01/04/2016

This memo describes proposed planting of fruit trees along the Eastern edge of Ohlone Greenway for public enjoyment and education in the City of Albany.

Proposed Planting Plan

This memo describes proposed planting of fruit trees along the Eastern edge of the Ohlone Greenway for public enjoyment and education in the City of Albany. The planting, establishment, and maintenance will be done, at no cost to the City of Albany, by members of the California Rare Fruit Growers (CRFG), members of Transition Albany, and interested city residents. The project will be modeled after the successful 30+ year-old fruit orchard at Prusch Park in San Jose, planted and maintained by members of CRFG, which consists of a very popular collection of over a hundred rare, delicious fruit varieties suitable to the climate in San Jose.

The specific trees proposed to be planted have been selected after careful evaluation of numerous successful local plantings for their suitability to the climate in Albany, ease of maintenance, drought tolerance after initial establishment, and productivity. Due to their particular desirability, Avocados will be prevalent in the planting. Other fruits to be planted will include Apple, Cherimoya, Loquat, Macadamia, Mulberry, Pear, Persimmon, Pineapple Guava, Plum, Quince, Raisin Tree, Strawberry Guava, and White Sapote. The number of trees and their placement will be guided by Restoration Design Group (RDG).

After the establishment period these tree species will require zero irrigation. The deciduous trees will require basic annual maintenance, to be performed in winter each year. The evergreen trees will require little to no maintenance, except for occasional pruning for shape and size.

Winter/Spring 2016 Planting

Due to the current historic El Niño, I propose to leverage the significant rainfall expected from Jan-Mar 2016 in establishing the fruit trees. There is a significant benefit to planting during January and February to leverage this rainfall, as it represents a once in a decade chance to establish healthy trees. The key for long term survival and minimizing the need for irrigation is to help such fruit trees establish healthy root systems. Some fruit trees, in

particular Avocados, benefit from being direct planted (rootstock Avocado seeds planted on site) and then after approximately 9 months grafted to the desired cultivars -- grown this way the trees develop healthy taproots. The other (standard) approach used by nurseries -- growing in a container, grafting while in that container, and then planting in the ground -- works fine, but trees such as Avocados and White Sapotes develop stunted taproots when grown in a container and often struggle when put in the ground and become dependent upon irrigation.

Since this is a preliminary plan, if any of the fruit tree locations are changed in the final plan that is approved, we will move/remove the trees planted in locations that were removed so as to be in accordance with the final plan.

Fall/Winter 2016/2017 Planting

The planting of trees will continue in Fall/Winter 2016/2017, filling in all planned fruit tree locations. In addition, trees that were planted as rootstock will be grafted to desired cultivars.

**CITY OF ALBANY
PARKS AND RECREATION COMMISSION
STAFF REPORT**

Agenda Date: January 14, 2016

SUBJECT: Measure WW Funds and CIP

REPORT BY: Chelle Putzer, Recreation and Community Services Director

RECOMMENDATION

Information only.

BACKGROUND

Measure WW passed in 2008 allocating funding to cities based on population. Measure WW funds are to be used for capital projects to support land and facilities for recreational activities and services. The City of Albany received \$771,363 and has a current available balance of \$549,127.

In April of 2015, the Parks & Recreation Commission began developing a priority project list for the unallocated Measure WW funds of \$549,127. Measure WW funds are set to expire December 31, 2018 and applications for projects are due March 31, 2016. In setting priorities, the Commission considered project readiness and feasibility, extent of use, and recreation needs of the community. Projects ideas came from community input, Friends of Albany Parks events, various city master planning documents, the Commission and staff. The Commission and staff worked together to create a project list with cost estimates at their April, May and July meetings in 2015. The Commission realized the total cost for the proposed projects exceeded the amount of Measure WW of funds available and they would be faced with narrowing the list even further to stay within the \$549,127 budget. The list included the following projects:

1. Memorial Park Improvements: Bathroom renovation, expand and enhance tot playground, improve lighting, seating and park entry
2. Ocean View Park: Convert grass area behind picnic into Bocce Court and add a bike/ped connector path to UC Village
3. Dartmouth Tot Lot: Replace fencing and drinking fountain, add park sign and solar trash can
4. Ohlone Greenway: add amenities such as fitness trail, public art, fruit/nut trees, senior area, improve signage and seating
5. Key Route Median Path: Add a walking path from Solano to Brighton
6. Shrine Pocket Park: Expand and improve the area around the Shrine to create a civic space and improve dedication plaques

In August of 2015, staff was directed to submit a list of all the proposed projects to be included in the Capital Improvement Plan (CIP) for Fiscal years 2016-2020. Staff submitted the Commission's entire

project list for consideration. In completing the CIP budget staff was able to find funding for all of the projects on the Parks & Recreation Commission's list using a combination of Measure WW and other available funding sources. The CIP was presented to and approved by the City Council in October of 2015. The entire CIP can be found on the City's website: <http://www.albanyca.org/index.aspx?page=858>

DISCUSSION

The City Council's approval of the CIP, which included Measure WW funded projects, eliminated the Commission's task of narrowing the project list to stay within the fund balance. It allows staff to move forward with developing the Measure WW application materials for the projects that are due on March 31, 2016. Projects that were approved by Council for Measure WW funding are:

1. Memorial Park Improvements: (FY 2016 & 2017): \$155,000: MWW, 801 Rec Reserve
2. Ocean View Park: (FY 2016): \$42,000: MWW
3. Dartmouth Tot Lot: (FY 2017): \$24,000: MWW
4. Ohlone Greenway: (FY 2016 & 2017): \$381,607: MWW, 801 Rec Reserve

Projects included in the CIP funded by other sources:

1. Key Route Median Path (FY 2018) \$215,000: Measure BB, Measure R Play Fields
2. Shrine Pocket Park (FY 2018) \$83,000: Measure R Play Fields, 801 Rec Reserve
3. Senior Center Sidewalk & Crossing (FY 2017) \$358,100: Measure B, BB, General Capital Projects
4. Albany Hill Access (ADA access at Taft & Lower Taft Steps) (FY 2017 & 2018) \$194,000: Measure R Open Space

The City is currently undergoing a transition plan for the Bulb as it will eventually become part of the Eastshore State Park and managed by the East Bay Regional Park District. Hence the City will revise the scope of the Measure WW Cove Project to include only the work that has been completed to date. This will return \$33,479 of Measure WW funds back into the City's total allotment.

CONCLUSION

The completion of the projects listed above will not only improve the conditions and overall enjoyment of Albany Parks they will also create new public spaces, add new amenities and provide better access to Albany Hill. The Park and Recreation Commission can now focus their efforts into engaging the Community in the planning and design process for these projects.