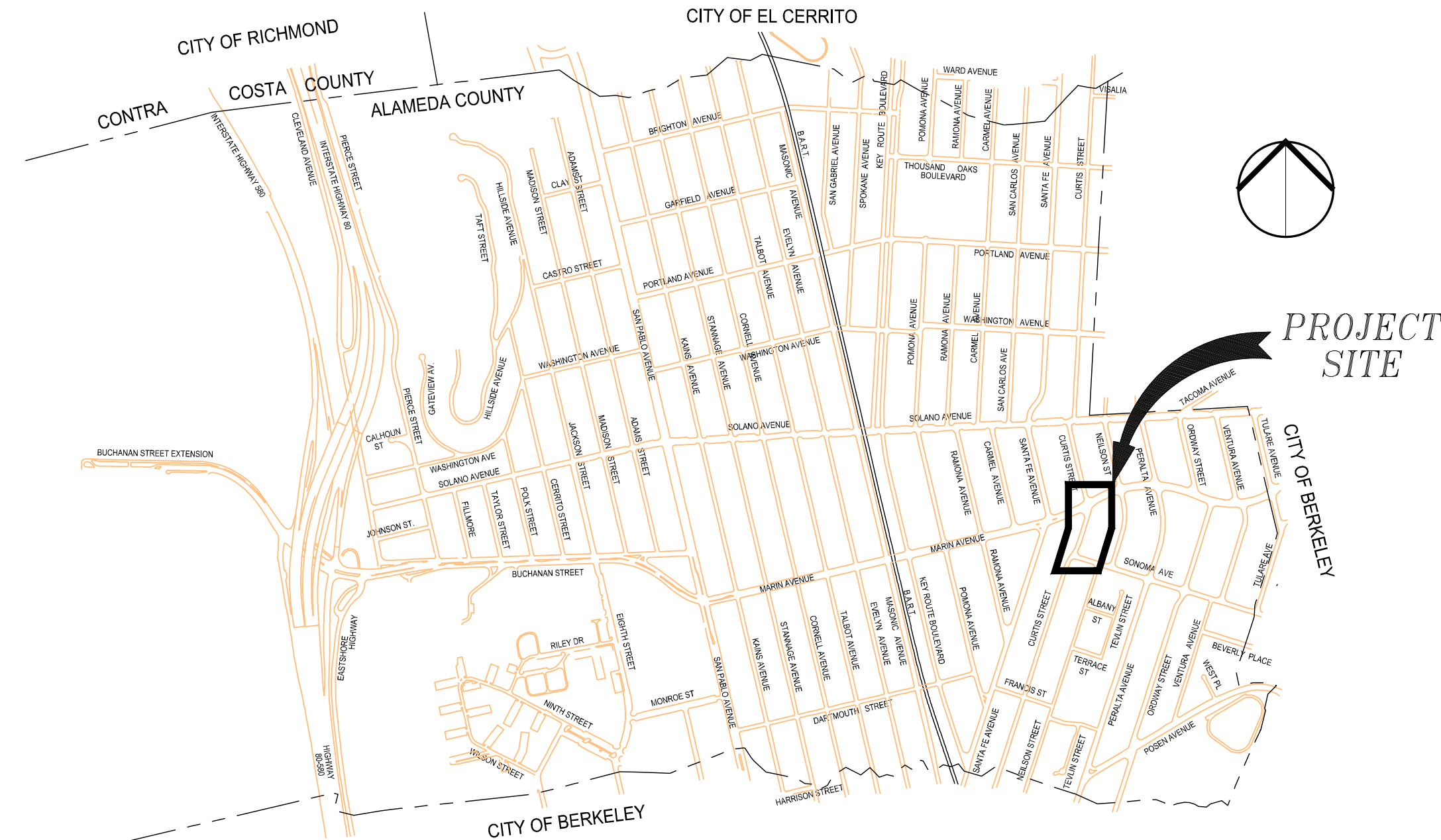


# SHEET INDEX

- C1.0 TITLE SHEET
- C2.0 GENERAL NOTES & LEGEND
- C3.0 EXISTING CONDITIONS & DEMOLITION PLAN
- C3.1 EXISTING CONDITIONS & DEMOLITION PLAN
- C4.0 PAVING & DIMENSIONING PLAN
- C4.1 PAVING & DIMENSIONING PLAN
- C5.0 GRADING PLAN
- C5.1 GRADING PLAN
- C6.0 UTILITY PLAN
- C7.0 EROSION CONTROL PLAN
- PD-01 PAVEMENT DELINEATION AND SIGNAGE PLAN MARIN AVE / CURTIS ST
- PD-02 PAVEMENT DELINEATION AND SIGNAGE PLAN CURTIS ST / SONOMA AVE
- PD-03 RECTANGULAR RAPID FLASHING BEACON DETAIL SHEET



**VICINITY MAP**

NOT TO SCALE



ALAMEDA COUNTY, CALIFORNIA

## PLANS

FOR THE CONSTRUCTION OF

# PEDESTRIAN IMPROVEMENTS EAST SIDE OF MARIN ELEMENTARY SCHOOL

CITY OF ALBANY CONTRACT NO. C13-23

CALTRANS PROJECT NO.

CIP # P90

CITY COUNCIL

Joanne Wile, Mayor

Peter Maass, Vice Mayor

Marge Atkinson, Council Member

Michael Barnes, Council Member

Rochelle Nason, Council Member

Penelope Leach, City Manager  
Jeff Bond, Community Development Director  
Ray Chan, Public Works Director

## APPLICABLE STANDARD PLANS

CALTRANS STANDARD PLANS (May 2010):

A20A	Pavement Markers and Traffic Lines - Typical Details
A20D	Pavement Markers and Traffic Lines - Typical Details
A24A	Pavement Markings - Arrows
RSP A24C	Pavement Markings - Symbols and Numerals
A24E	Pavement Markings - Words and Crosswalks
RSP A88A	Curb Ramp Details
T11	Traffic Control System for Lane Closure on Multilane Conventional Highways
T13	Traffic Control System for Lane Closure on Two Lane Conventional Highways

CITY OF ALBANY STANDARD PLANS WITH SPECIAL PROVISIONS:

ST-1	Vertical Curb and Gutter
ST-2	Residential Sidewalk/Driveway (Separated)
ST-3	Sidewalk (Monolithic)
ST-4	Curb and Sidewalk Joints
ST-5	Curb, Gutter, and Sidewalk Repairs
ST-6	Residential Driveway Repairs
ST-7	Legends & Notes - Sidewalks, Driveways and Curb & Gutter
ST-8	Street & Traffic Sign Mounting Standards
ST-8A	Sign Anchor Detail
ST-10	Sidewalk Drain
ST-11	Type I Sign

CONTRA COSTA COUNTY (STORM DRAIN)

CD11i	Inlet Frame and Grate
CD20i	Type "A" Inlet
CRS1i	Signing & Striping Standards
CD30i	Manhole frame and cover
CD31i	Type II Manhole Base

STANDARD PLANS FOR PUBLIC WORKS CONSTRUCTION - THE "GREENBOOK"

335-1	Pipe Connection to Existing Storm Drains
-------	--

## BASIS OF BEARINGS

THE BEARING (N76°48'34"E) WAS HELD BETWEEN CITY OF ALBANY BRASS DISC MONUMENTS SET FLUSH IN THE NORTHEASTERLY RETURN OF RAMONA AVENUE AND MARIN AVENUE (LCC CP#10) AND AT THE NORTHERLY CONCRETE SIDEWALK LOCATED AT 1435/1437 MARIN AVENUE (LCC CP#11). THE DISTANCE MEASURED BETWEEN SAID MONUMENTS WAS 370.12 FEET.

## HORIZONTAL DATUM

ALL COORDINATES AND DISTANCES SHOWN HEREON ARE BASED ON NORTH AMERICAN DATUM 1983, ZONE III, (CORS96) 2002.00 EPOCH, AND ARE GIVEN IN U.S. SURVEY FEET. DISTANCES SHOWN HEREON ARE AT GROUND LEVEL.

## VERTICAL DATUM

ELEVATIONS SHOWN HEREON ARE BASED UPON CITY OF ALBANY MONUMENT (LCC CP#11, A 3" DIAMETER PUNCHED BRASS DISK LOCATED IN THE SIDEWALK ON THE NORTH SIDE OF MARIN AVENUE APPROXIMATELY 170 FEET WEST OF THE INTERSECTION OF MARIN AVENUE AND THE CENTERLINE OF EXISTING SANTA FE AVENUE (ELEV 85.91') LOCATED AT PROJECT "M" LINE STATION 100+00.

## ABBREVIATIONS

AB	AGGREGATE BASE	FDAC	FULL DEPTH ASPHALT CONCRETE	RCP	REINFORCED CONCRETE PIPE
AC	ASPHALT CONCRETE	FOC	FACE OF CURB	RT	RIGHT
APPROX	APPROXIMATE	GALV	GALVANIZED	REQ'D	REQUIRED
BC	BEGIN CURVE	GB	GRADE BREAK	RET	RETURN
BOC	BACK OF CURB	GRND	GROUND	S	SLOPE
BSW	BACK OF SIDEWALK	GTR	GUTTER	SD	STORM DRAIN
BVCE	BEGIN VERTICAL CURVE ELEVATION	GV	GAS VALVE	SDI	STORM DRAIN INLET
BVCS	BEGIN VERTICAL CURVE STATION	H, HORIZ	HORIZONTAL	SDMH	STORM DRAIN MANHOLE
C	CURVE	HP	HIGH POINT	SF	SQUARE FEET
CCC	CONTRA COSTA COUNTY	HYD	HYDRANT	SHLD	SHOULDER
C&G	CURB AND GUTTER	IN	INCH	SSMH	SANITARY SEWER MANHOLE
CB	CATCH BASIN	INV	INVERT	SS	SANITARY SEWER
CD	CURB DRAIN	L	LENGTH	STA	STATION
CH	CURB HEIGHT	LED	LIGHT EMITTING DIODE	ST	STREET
CIP	CAST IRON PIPE	LG	LIP OF GUTTER	SW	SIDEWALK
CL	CENTERLINE	LS	LANDSCAPE	T	TOTAL
CMP	CORRUGATED METAL PIPE	LT	LEFT	TCE	TEMPORARY CONSTRUCTION EASEMENT
D, DIA	DIAMETER	MIN	MINIMUM	TEL	TELEPHONE
DI	DRAINAGE INLET	N	NORTH, NORTHING, NEW	TOC	TOP OF CURB
DIP	DUCTILE IRON PIPE	NO	NUMBER	TS	TRAFFIC SIGNAL
DWG	DRAWING	NTS	NOT TO SCALE	TYP	TYPICAL
E	EASTING, ELECTRICAL	P	PAVEMENT	VAR	VARIES
ELEC	ELECTRICAL	(P)	PROPOSED	VC	VERTICAL CURVE
EC	END CURVE	PBB	PACIFIC BELL BOX	VCP	VITRIFIED CLAY PIPE
EDG	EDGE	PCC	PORTLAND CEMENT CONCRETE	W	WATER
EL OR ELEV	ELEVATION	PCC	POINT OF COMPOUND CURVE	W/	WITH
ELEC OH	ELECTRICAL OVERHEAD	PG	PROFILE GRADE	WM	WATER MAIN
EP, EOP	EDGE OF PAVEMENT	POC	POINT ON HORIZONTAL CURVE	2:1	2 HORIZONTAL TO 1 VERTICAL SLOPE
ETW	EDGE OF TRAVEL WAY	PRC	POINT OF REVERSE CURVE		
EVCE	END OF VERTICAL CURVE ELEVATION	PRKG	PARKING		
EVCS	END OF VERTICAL CURVE STATION	PVC	POLYVINYL CHLORIDE		
EXIST, EX (E)	EXISTING	R	RADIUS		
FB	FACE OF BUILDING	R/W	RIGHT OF WAY		

RAY CHAN  
PUBLIC WORKS DIRECTOR

DATE

REV	DATE	DESCRIPTION

DESIGNED BY:	AKM
DRAWN BY:	AKM
CHECKED BY:	PJS
REVIEWED BY:	
DATE:	June 16, 2014

REGISTRATION:

3244 Brookside Road, Suite 100 Stockton, California 95219  
209-943-2021 www.siegfriedeng.com Fx: 209-942-0214

DATE SIGNED: 11/09/14

CLIENT:

REVIEWED FOR GENERAL CONFORMANCE WITH THE CITY OF ALBANY STANDARD SPECIFICATIONS AND ORDINANCES

RAY CHAN, CITY ENGINEER.  
DATE: \_\_\_\_\_

PEDESTRIAN IMPROVEMENTS  
EAST SIDE OF MARIN ELEMENTARY  
SCHOOL

City of Albany Contract No. C13-23  
Caltrans Project No. SRTS10-04-ALBANY-1

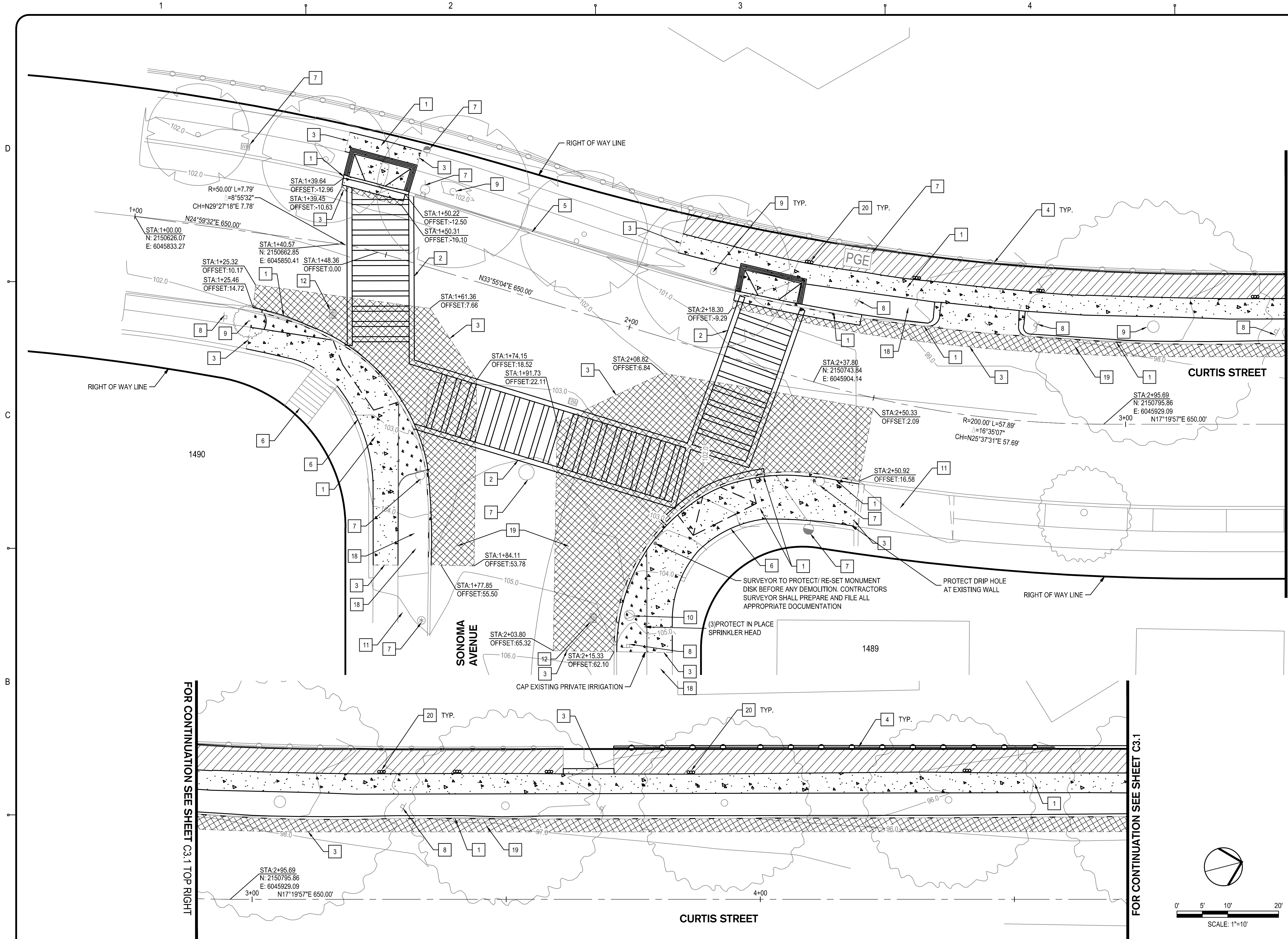
TITLE SHEET

DRAWING: **C1.0**

SHEET No. 1 OF 13

100% DESIGN DOCUMENTS

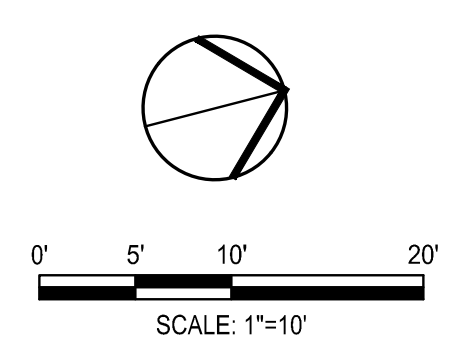




- LEGEND:**
- SAWCUT, REMOVE, AND DISPOSE OF EXISTING CONCRETE PAVEMENT. REMOVAL DEPTH SHALL ACCOMMODATE DEPTH OF PROPOSED IMPROVEMENTS. REMOVE TO NEAREST RELIEF JOINT.
  - REMOVE, AND DISPOSE OF EXISTING PAVERS. REMOVAL DEPTH SHALL ACCOMMODATE DEPTH OF PROPOSED IMPROVEMENTS
  - SAWCUT, REMOVE, AND DISPOSE OF EXISTING ASPHALT PAVEMENT. REMOVAL DEPTH SHALL ACCOMMODATE DEPTH OF PROPOSED IMPROVEMENTS
  - CLEAR AND GRUB, EXCAVATE AS NECESSARY TO PREPARE AREA FOR IMPROVEMENTS
  - REMOVE EXISTING AC AS NECESSARY TO CONSTRUCT SIDEWALK
  - EXISTING TREE STUMP AND ROOTS TO BE REMOVED
  - RIGHT OF WAY LINE

- DEMOLITION NOTES:**
1. VERIFY LOCATION OF SURFACE AND SUBSURFACE UTILITIES IN THE FIELD PRIOR TO COMMENCING WORK. CALL UNDERGROUND SERVICE ALERT (USA) AT 811 AT LEAST 48 HOURS PRIOR TO EXCAVATION.
  2. REFER TO SPECIFICATIONS FOR REQUIREMENTS OF DEMOLITION AND UTILITY ABANDONMENT.
  3. CONTRACTOR SHALL NOTIFY AND COORDINATE WORK WITH UTILITY FACILITY OWNERS.
  4. ALL EXISTING STRIPING AND MARKINGS TO BE REMOVED SHALL BE GROUND AND A LAYER OF SEAL COAT SHALL BE APPLIED.
  5. SAWCUT ON SIDEWALK SHOULD BE MADE ALONG EXISTING JOINTS WHERE POSSIBLE OR AS DIRECTED BY CITY ENGINEER.
  6. ALL ENTITIES SHOWN AS BOLD ARE TO BE DEMOLISHED, UNLESS OTHERWISE NOTED.
  7. ALL QUANTITIES ARE APPROXIMATE AND SHALL BE VERIFIED BY THE CONTRACTOR IN THE FIELD.
  8. ALL UTILITIES BOXES WITHIN ROADWAY SHALL BE PROTECTED AND ADJUSTED TO FINISH GRADE, UNLESS OTHERWISE NOTED.
  9. REFER TO PD SHEETS FOR SIGNING AND STRIPING.
  10. IF ANY QUESTIONS ARISE AS TO WHETHER SOMETHING SHOULD BE REMOVED, CONTRACTOR SHALL CONTACT THE PROJECT MANAGER.

- NOTES:**
- 1 REMOVE EXISTING CONCRETE CURB & GUTTER IMPROVEMENTS
  - 2 REMOVE EXISTING STRIPING. SEE NOTE NO. 4
  - 3 SAWCUT TO A NEAT & CLEAN LINE.
  - 4 PROTECT IN PLACE EXISTING FENCE
  - 5 PROTECT IN PLACE EXISTING GUARD RAIL
  - 6 PROTECT IN PLACE EXISTING CURB / WALL/STAIRCASE
  - 7 PROTECT IN PLACE EXISTING POLE / ANCHOR / STRUCTURE / UTILITY
  - 8 PROTECT IN PLACE EXISTING SIGN
  - 9 PROTECT IN PLACE EXISTING TREE
  - 10 PROTECT IN PLACE EXISTING FIRE HYDRANT
  - 11 PROTECT IN PLACE EXISTING DRIVEWAY
  - 12 PROTECT AND ADJUST TO GRADE UTILITY BOX
  - 13 PROTECT IN PLACE EXISTING STORM STRUCTURE.
  - 14 REMOVE EXISTING STORM STRUCTURE PRESERVE EXISTING PIPE CONNECTIONS.
  - 15 PROTECT IN PLACE EXISTING HOME/GARAGE.
  - 16 PROTECT IN PLACE EXISTING UNDERGROUND UTILITY
  - 17 RELOCATE EXISTING VALVE BOX.
  - 18 PROTECT IN PLACE EXISTING IRRIGATION AND LANDSCAPING.
  - 19 REMOVE EXISTING AC.
  - 20 REMOVE EXISTING CONCRETE FENCE POST FOOTING



FOR CONTINUATION SEE SHEET C3.1 TOP RIGHT

FOR CONTINUATION SEE SHEET C3.1

FOR CONTINUATION SEE SHEET C3.0 BOTTOM RIGHT

REV	DATE	DESCRIPTION

DESIGNED BY:	AKM
DRAWN BY:	AKM
CHECKED BY:	PJS
REVIEWED BY:	
DATE:	June 16, 2014

REGISTRATION:

DATE SIGNED: 11/09/14

CLIENT:

REVIEWED FOR GENERAL CONFORMANCE WITH THE CITY OF ALBANY STANDARD SPECIFICATIONS AND ORDINANCES

RAY CHAN, CITY ENGINEER.  
DATE: \_\_\_\_\_

**ALBANY, CA**

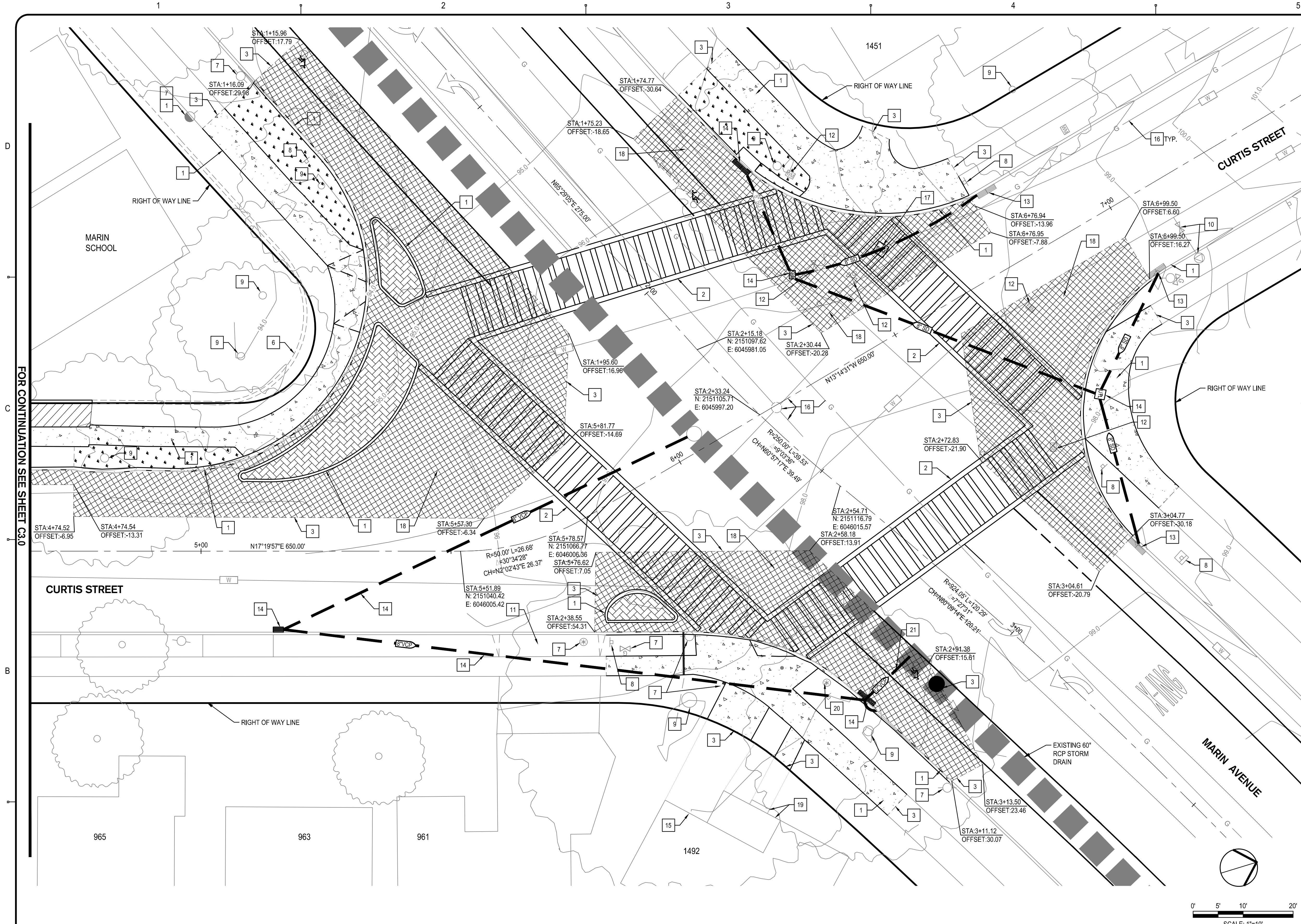
**PEDESTRIAN IMPROVEMENTS  
EAST SIDE OF MARIN ELEMENTARY  
SCHOOL**

City of Albany Contract No. C13-23  
Caltrans Project No. SRTS10-04-ALBANY-1

**EXISTING CONDITIONS &  
DEMOLITION PLAN**

DRAWING: **C3.0** SHEET No. **3** OF **13**

100% DESIGN DOCUMENTS



- LEGEND:**
- SAWCUT, REMOVE, AND DISPOSE OF EXISTING CONCRETE PAVEMENT. REMOVAL DEPTH SHALL ACCOMMODATE DEPTH OF PROPOSED IMPROVEMENTS
  - REMOVE, AND DISPOSE OF EXISTING PAVERS. REMOVAL DEPTH SHALL ACCOMMODATE DEPTH OF PROPOSED IMPROVEMENTS
  - SAWCUT, REMOVE, AND DISPOSE OF EXISTING ASPHALT PAVEMENT. REMOVAL DEPTH SHALL ACCOMMODATE DEPTH OF PROPOSED IMPROVEMENTS
  - CLEAR AND GRUB, EXCAVATE AS NECESSARY TO PREPARE AREA FOR IMPROVEMENTS
  - EXISTING TREE STUMP AND ROOTS TO BE REMOVED
  - RIGHT OF WAY LINE

- DEMOLITION NOTES:**
1. VERIFY LOCATION OF SURFACE AND SUBSURFACE UTILITIES IN THE FIELD PRIOR TO COMMENCING WORK. CALL UNDERGROUND SERVICE ALERT (USA) AT 811 AT LEAST 48 HOURS PRIOR TO EXCAVATION.
  2. REFER TO SPECIFICATIONS FOR REQUIREMENTS OF DEMOLITION AND UTILITY ABANDONMENT.
  3. CONTRACTOR SHALL NOTIFY AND COORDINATE WORK WITH UTILITY FACILITY OWNERS.
  4. ALL EXISTING STRIPING AND MARKINGS TO BE REMOVED SHALL BE GROUND AND A LAYER OF SEAL COAT SHALL BE APPLIED.
  5. SAWCUT ON SIDEWALK SHOULD BE MADE ALONG EXISTING JOINTS WHERE POSSIBLE OR AS DIRECTED BY CITY ENGINEER.
  6. ALL ENTITIES SHOWN AS BOLD ARE TO BE DEMOLISHED, UNLESS OTHERWISE NOTED.
  7. ALL QUANTITIES ARE APPROXIMATE AND SHALL BE VERIFIED BY THE CONTRACTOR IN THE FIELD.
  8. ALL UTILITIES BOXES WITHIN ROADWAY SHALL BE PROTECTED AND ADJUSTED TO FINISH GRADE, UNLESS OTHERWISE NOTED.
  9. REFER TO PD SHEETS FOR SIGNING AND STRIPING.
  10. IF ANY QUESTIONS ARISE AS TO WHETHER SOMETHING SHOULD BE REMOVED, CONTRACTOR SHALL CONTACT THE PROJECT MANAGER.

- NOTES:**
- 1 REMOVE EXISTING CONCRETE CURB & GUTTER IMPROVEMENTS
  - 2 REMOVE EXISTING STRIPING, SEE DEMOLITION NOTE NO. 4
  - 3 SAWCUT TO A NEAT & CLEAN LINE. IF CONCRETE, REMOVE TO THE NEAREST RELIEF JOINT.
  - 4 PROTECT IN PLACE EXISTING FENCE
  - 5 PROTECT IN PLACE EXISTING GUARD RAIL
  - 6 PROTECT IN PLACE EXISTING CURB / WALL/STAIRCASE
  - 7 PROTECT IN PLACE EXISTING POLE / ANCHOR / STRUCTURE / UTILITY
  - 8 PROTECT IN PLACE EXISTING SIGN
  - 9 PROTECT IN PLACE EXISTING TREE
  - 10 PROTECT IN PLACE EXISTING FIRE HYDRANT
  - 11 PROTECT IN PLACE EXISTING DRIVEWAY
  - 12 REMOVE/REPLACE TO GRADE UTILITY BOX
  - 13 PROTECT IN PLACE EXISTING STORM STRUCTURE.
  - 14 REMOVE EXISTING STORM STRUCTURE
  - 15 PROTECT IN PLACE EXISTING HOME/GARAGE.
  - 16 PROTECT IN PLACE EXISTING UNDERGROUND UTILITY
  - 17 EXISTING STORM DRAIN JUNCTION BOX.
  - 18 REMOVE EXISTING AC
  - 19 PROTECT IN PLACE EXISTING PORCH WITH STAIRS
  - 20 SURVEYOR TO PROTECT/ RE-SET MONUMENT DISK BEFORE ANY DEMOLITION. CONTRACTOR SURVEYOR SHALL PREPARE AND FILE ALL APPROPRIATE DOCUMENTATION
  - 21 DEMO 12" VCP

FOR CONTINUATION SEE SHEET C30

REV	DATE	DESCRIPTION

DESIGNED BY: AKM  
 DRAWN BY: AKM  
 CHECKED BY: PJS  
 REVIEWED BY:  
 DATE: June 16, 2014

REGISTRATION:

3244 Brookside Road, Suite 100 Stockton, California 95219  
 209-943-2021 www.siegfriedeng.com Fx: 209-942-0214

DATE SIGNED: 11/09/14

CLIENT: CITY OF ALBANY

REVIEWED FOR GENERAL CONFORMANCE WITH THE CITY OF ALBANY STANDARD SPECIFICATIONS AND ORDINANCES

RAY CHAN, CITY ENGINEER.  
 DATE:

**ALBANY, CA**

**PEDESTRIAN IMPROVEMENTS  
 EAST SIDE OF MARIN ELEMENTARY  
 SCHOOL**

City of Albany Contract No. C13-23  
 Caltrans Project No. SRTS10-04-ALBANY-1

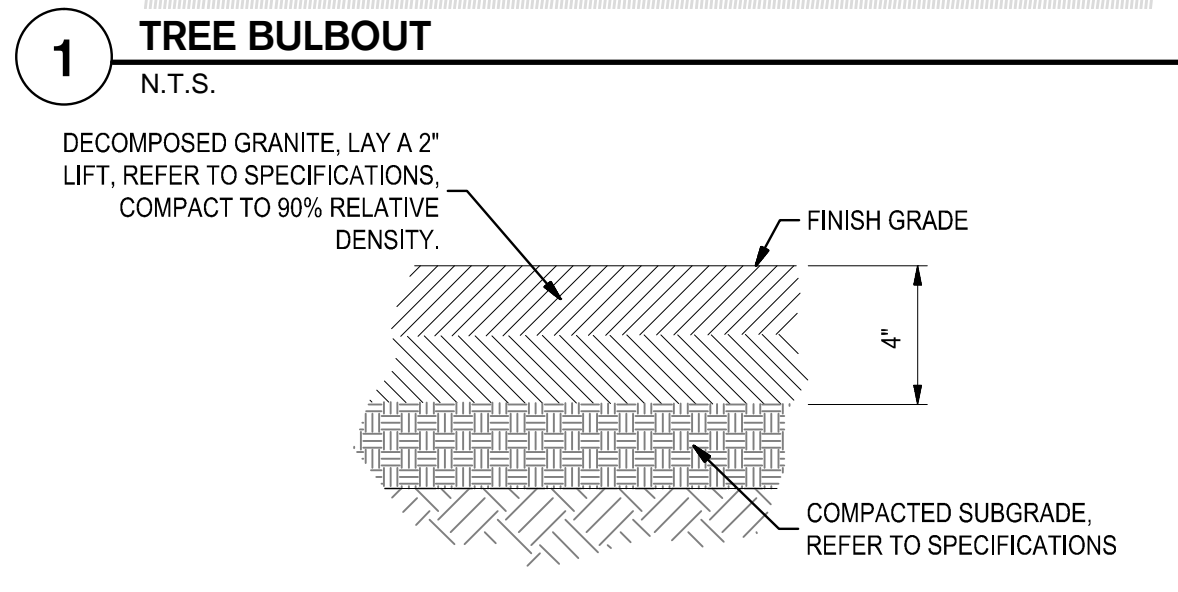
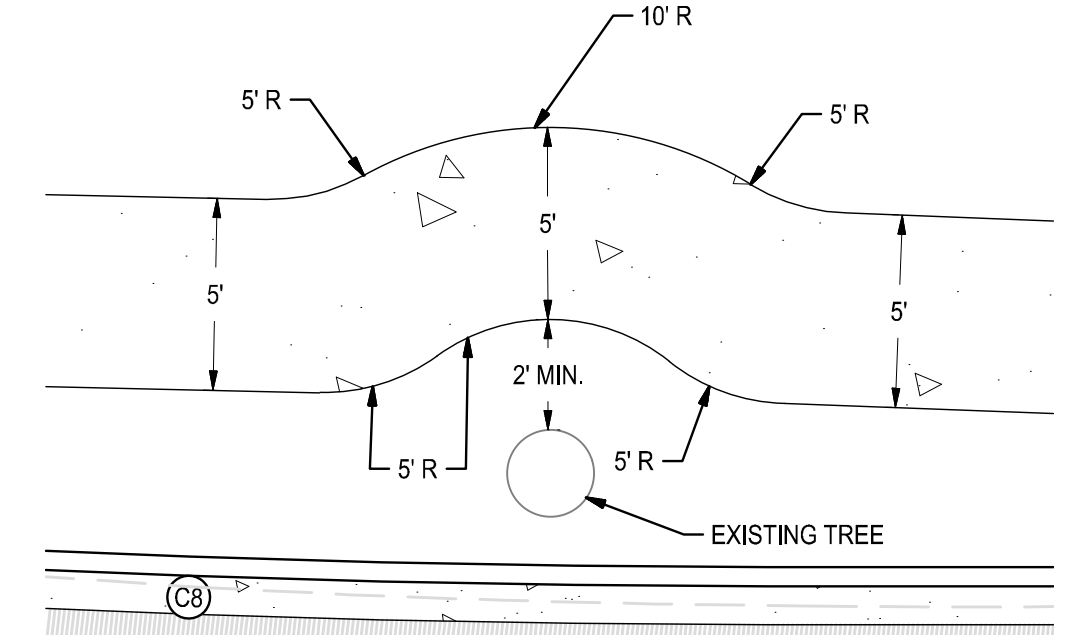
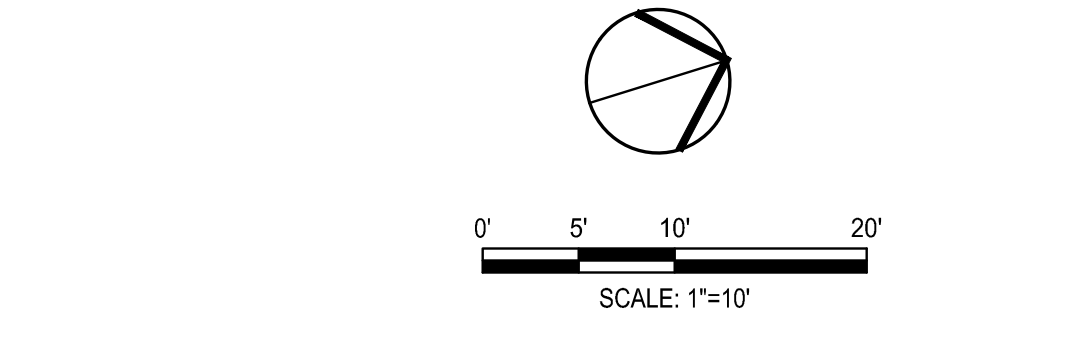
**EXISTING CONDITIONS &  
 DEMOLITION PLAN**

DRAWING: **C3.1** SHEET No. 4 OF 13

100% DESIGN DOCUMENTS

LEGEND:

- PAVEMENT:  
INSTALL 12" AC DEEPLIFT, UNLESS OTHERWISE NOTED
- CONCRETE SIDEWALK / IMPROVEMENTS:  
SIDEWALK: 4" PCC OVER 4" AB. (STITOST7)  
DRIVEWAY: 6" PCC OVER 6" AB.
- DG (DECOMPOSED GRANITE):  
INSTALL DECOMPOSED GRANITE FILL PER DETAIL 2 SHEET C4.0
- RW (RIGHT OF WAY LINE)



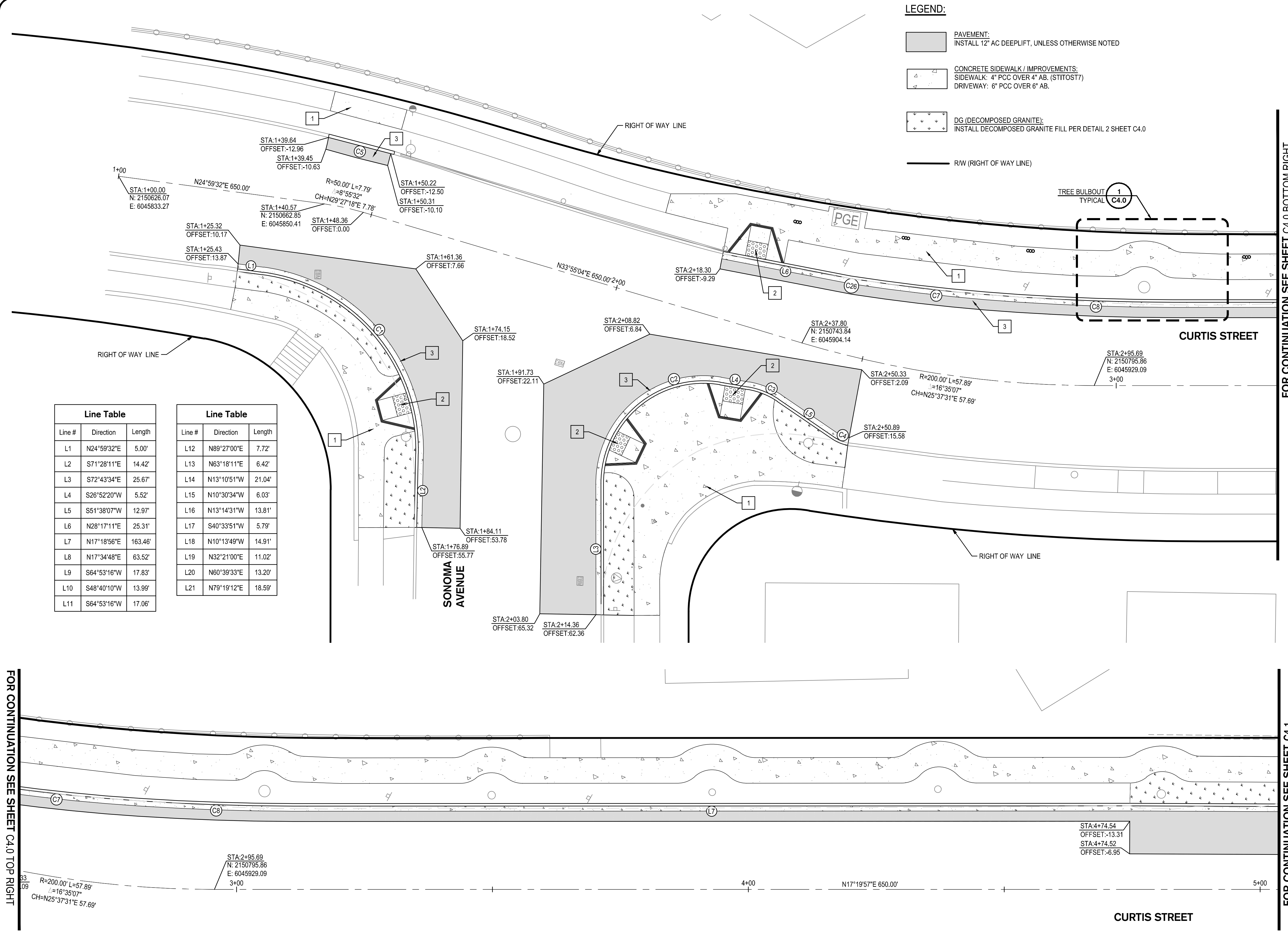
**1 TREE BULBOUT**  
N.T.S.

**2 DECOMPOSED GRANITE**  
N.T.S.

KEY NOTES:

- 1 INSTALL CONCRETE SIDEWALK PER CITY OF ALBANY STANDARD DETAIL ST-2
- 2 INSTALL CURB RAMP PER CALTRANS STANDARD DETAIL A88A
- 3 INSTALL CURB AND GUTTER PER CITY OF ALBANY STANDARD DETAIL ST-1

Curve Table				
Curve #	Length	Radius	Delta	Chord Bearing
C1	51.03	35.00	83°32'17"	N66°45'40"E 46.63'
C2	34.77	20.00	99°35'55"	S22°55'37"E 30.55'
C3	6.48	15.00	24°45'47"	S39°15'13"W 6.43'
C4	3.12	7.50	23°49'57"	S39°43'08"W 3.10'
C5	13.20	73319.29	0°00'37"	N31°55'21"E 13.20'
C7	32.31	370.84	4°59'30"	N23°32'27"E 32.30'
C8	30.09	480.17	3°35'25"	N19°17'39"E 30.08'
C9	52.11	22.50	132°41'32"	N48°45'58"W 41.22'
C10	5.66	20.00	16°13'06"	S56°46'43"W 5.64'
C11	5.66	20.00	16°13'06"	S56°46'43"W 5.64'
C12	9.13	20.00	26°08'49"	N76°22'35"E 9.05'
C13	9.13	20.00	26°08'49"	N76°22'35"E 9.05'
C14	26.70	20.00	76°29'02"	N25°03'40"E 24.76'
C15	37.10	20.00	106°16'14"	N66°22'38"W 32.00'
C16	6.95	20.00	19°55'24"	S50°31'33"W 6.92'
C17	7.17	20.00	20°31'39"	S50°49'40"W 7.13'
C18	14.86	20.00	42°34'50"	N11°03'36"E 14.52'
C19	9.88	20.00	28°18'33"	N46°30'17"E 9.78'
C20	6.51	20.00	18°39'39"	N69°59'22"E 6.49'
C26	0.94	370.84	0°08'42"	N26°06'33"E 0.94'



Line Table		
Line #	Direction	Length
L1	N24°59'32"E	5.00'
L2	S71°28'11"E	14.42'
L3	S72°43'34"E	25.67'
L4	S26°52'20"W	5.52'
L5	S51°38'07"W	12.97'
L6	N28°17'11"E	25.31'
L7	N17°18'56"E	163.46'
L8	N17°34'48"E	63.52'
L9	S64°53'16"W	17.83'
L10	S48°40'10"W	13.99'
L11	S64°53'16"W	17.06'

Line Table		
Line #	Direction	Length
L12	N89°27'00"E	7.72'
L13	N63°18'11"E	6.42'
L14	N13°10'51"W	21.04'
L15	N10°30'34"W	6.03'
L16	N13°14'31"W	13.81'
L17	S40°33'51"W	5.79'
L18	N10°13'49"W	14.91'
L19	N32°21'00"E	11.02'
L20	N60°39'33"E	13.20'
L21	N79°19'12"E	18.59'

FOR CONTINUATION SEE SHEET C4.0 TOP RIGHT

FOR CONTINUATION SEE SHEET C4.1

REV	DATE	DESCRIPTION

DESIGNED BY: AKM  
 DRAWN BY: AKM  
 CHECKED BY: PJS  
 REVIEWED BY:  
 DATE: June 16, 2014

REGISTRATION:

**SIEGFRIED**  
 3244 Brookside Road, Suite 100 Stockton, California 95219  
 209-943-2021 www.siegfriedeng.com Fx: 209-942-0214  
 DATE SIGNED: 11/09/14

CLIENT: CITY OF ALBANY

REVIEWED FOR GENERAL CONFORMANCE WITH THE CITY OF ALBANY STANDARD SPECIFICATIONS AND ORDINANCES

RAY CHAN, CITY ENGINEER.  
 DATE:

**ALBANY, CA**

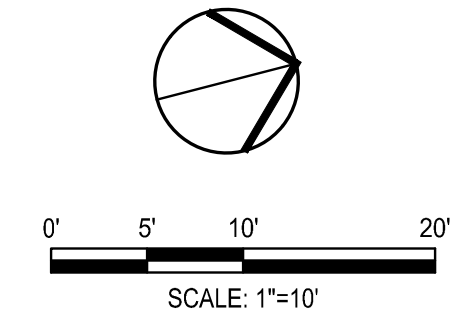
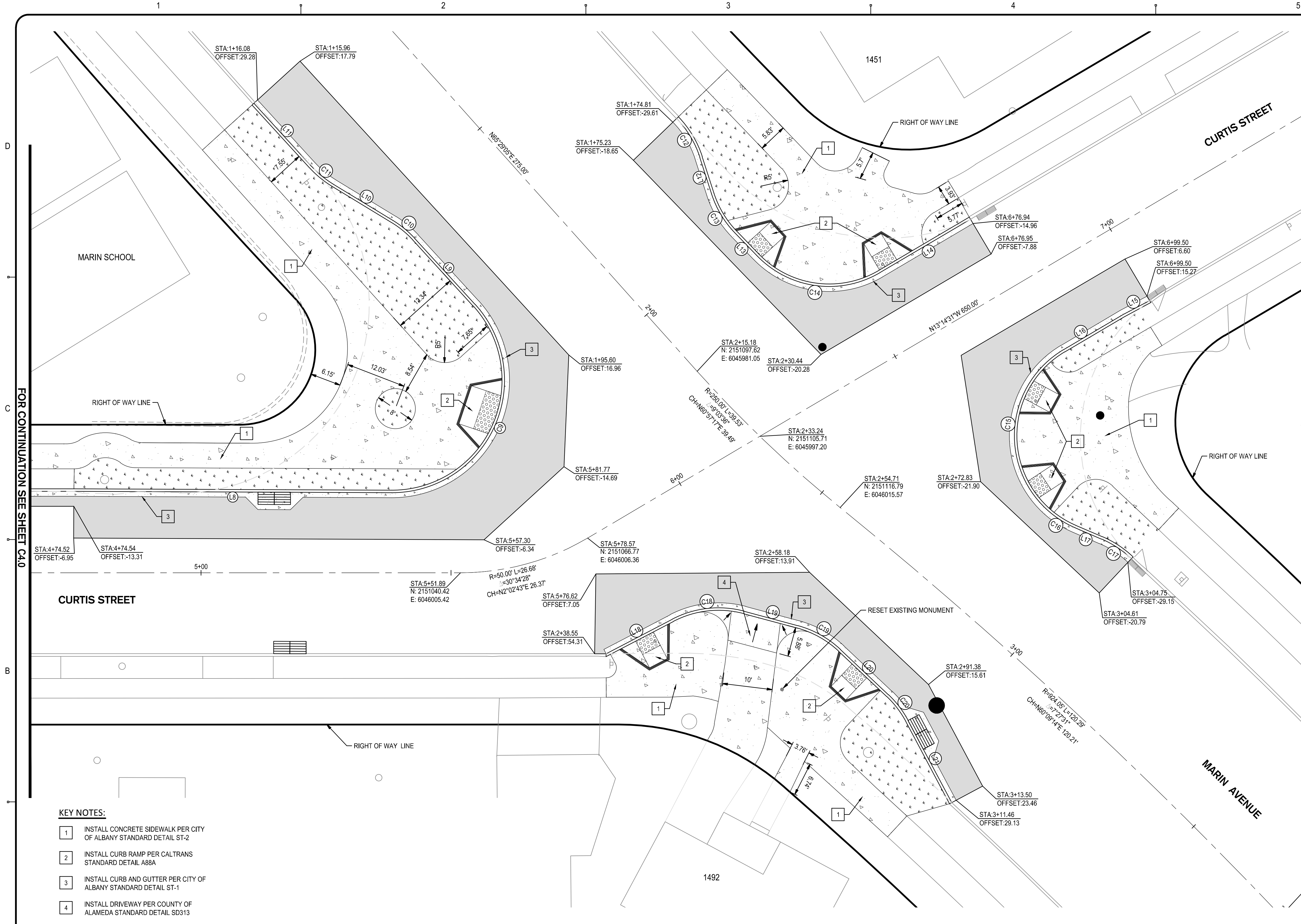
**PEDESTRIAN IMPROVEMENTS  
 EAST SIDE OF MARIN ELEMENTARY  
 SCHOOL**

City of Albany Contract No. C13-23  
 Caltrans Project No. SRTS10-04-ALBANY-1

**PAVING &  
 DIMENSIONING PLAN**

DRAWING: **C4.0** SHEET No. 5 OF 13

100% DESIGN DOCUMENTS



**LEGEND:**

- PAVEMENT:  
INSTALL 12" AC DEEPLIFT, UNLESS OTHERWISE NOTED
- CONCRETE SIDEWALK / IMPROVEMENTS:  
SIDEWALK: 4" PCC OVER 4" AB. (STITOST7)  
DRIVEWAY: 6" PCC OVER 6" AB.
- DG (DECOMPOSED GRANITE):  
INSTALL DECOMPOSED GRANITE FILL PER DETAIL 2 SHEET C4.0
- R/W (RIGHT OF WAY LINE)

Line Table		
Line #	Direction	Length
L1	N24°59'32"E	5.00'
L2	S71°28'11"E	14.42'
L3	S72°43'34"E	25.67'
L4	S26°52'20"W	5.52'
L5	S51°38'07"W	12.97'
L6	N28°17'11"E	25.31'
L7	N17°18'56"E	163.46'
L8	N17°34'48"E	63.52'
L9	S64°53'16"W	17.83'
L10	S48°40'10"W	13.99'
L11	S64°53'16"W	17.06'

Line Table		
Line #	Direction	Length
L12	N89°27'00"E	7.72'
L13	N63°18'11"E	6.42'
L14	N13°10'51"W	21.04'
L15	N10°30'34"W	6.03'
L16	N13°14'31"W	13.81'
L17	S40°33'51"W	5.79'
L18	N10°13'49"W	14.91'
L19	N32°21'00"E	11.02'
L20	N60°39'33"E	13.20'
L21	N79°19'12"E	18.59'

Curve Table				
Curve #	Length	Radius	Delta	Chord Bearing
C1	51.03	35.00	83°32'17"	N66°45'40"E 46.63'
C2	34.77	20.00	99°35'55"	S22°55'37"E 30.55'
C3	6.48	15.00	24°45'47"	S39°15'13"W 6.43'
C4	3.12	7.50	23°49'57"	S39°43'08"W 3.10'
C5	13.20	73319.29	0°00'37"	N31°55'21"E 13.20'
C7	32.31	370.84	4°59'30"	N23°32'27"E 32.30'
C8	30.09	480.17	3°35'25"	N19°17'39"E 30.08'
C9	52.11	22.50	132°41'32"	N48°45'58"W 41.22'
C10	5.66	20.00	16°13'06"	S56°46'43"W 5.64'
C11	5.66	20.00	16°13'06"	S56°46'43"W 5.64'
C12	9.13	20.00	26°08'49"	N76°22'35"E 9.05'
C13	9.13	20.00	26°08'49"	N76°22'35"E 9.05'
C14	26.70	20.00	76°29'02"	N25°03'40"E 24.76'
C15	37.10	20.00	106°16'14"	N66°22'38"W 32.00'
C16	6.95	20.00	19°55'24"	S50°31'33"W 6.92'
C17	7.17	20.00	20°31'39"	S50°49'40"W 7.13'
C18	14.86	20.00	42°34'50"	N11°03'36"E 14.52'
C19	9.88	20.00	28°18'33"	N46°30'17"E 9.78'
C20	6.51	20.00	18°39'39"	N89°59'22"E 6.49'
C26	0.94	370.84	0°08'42"	N26°06'33"E 0.94'

- KEY NOTES:**
- 1 INSTALL CONCRETE SIDEWALK PER CITY OF ALBANY STANDARD DETAIL ST-2
  - 2 INSTALL CURB RAMP PER CALTRANS STANDARD DETAIL A88A
  - 3 INSTALL CURB AND GUTTER PER CITY OF ALBANY STANDARD DETAIL ST-1
  - 4 INSTALL DRIVEWAY PER COUNTY OF ALAMEDA STANDARD DETAIL SD313

REV	DATE	DESCRIPTION

DESIGNED BY: AKM  
 DRAWN BY: AKM  
 CHECKED BY: PJS  
 REVIEWED BY:  
 DATE: June 16, 2014

REGISTRATION:

**SIEGFRIED**  
 3244 Brookside Road, Suite 100 Stockton, California 95219  
 209-943-2021 www.siegfriedeng.com Fx: 209-942-0214  
 DATE SIGNED: 11/09/14

CLIENT: CITY OF ALBANY

REVIEWED FOR GENERAL CONFORMANCE WITH THE CITY OF ALBANY STANDARD SPECIFICATIONS AND ORDINANCES

RAY CHAN, CITY ENGINEER.  
 DATE:

**ALBANY, CA**

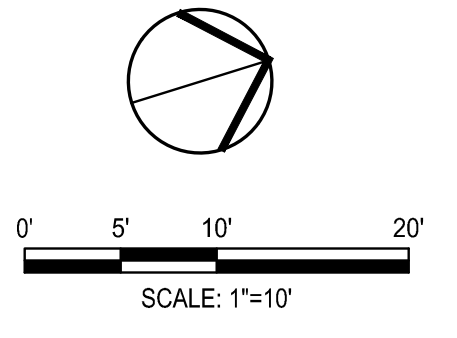
**PEDESTRIAN IMPROVEMENTS  
 EAST SIDE OF MARIN ELEMENTARY  
 SCHOOL**

City of Albany Contract No. C13-23  
 Caltrans Project No. SRTS10-04-ALBANY-1

**PAVING & DIMENSIONING  
 PLAN**

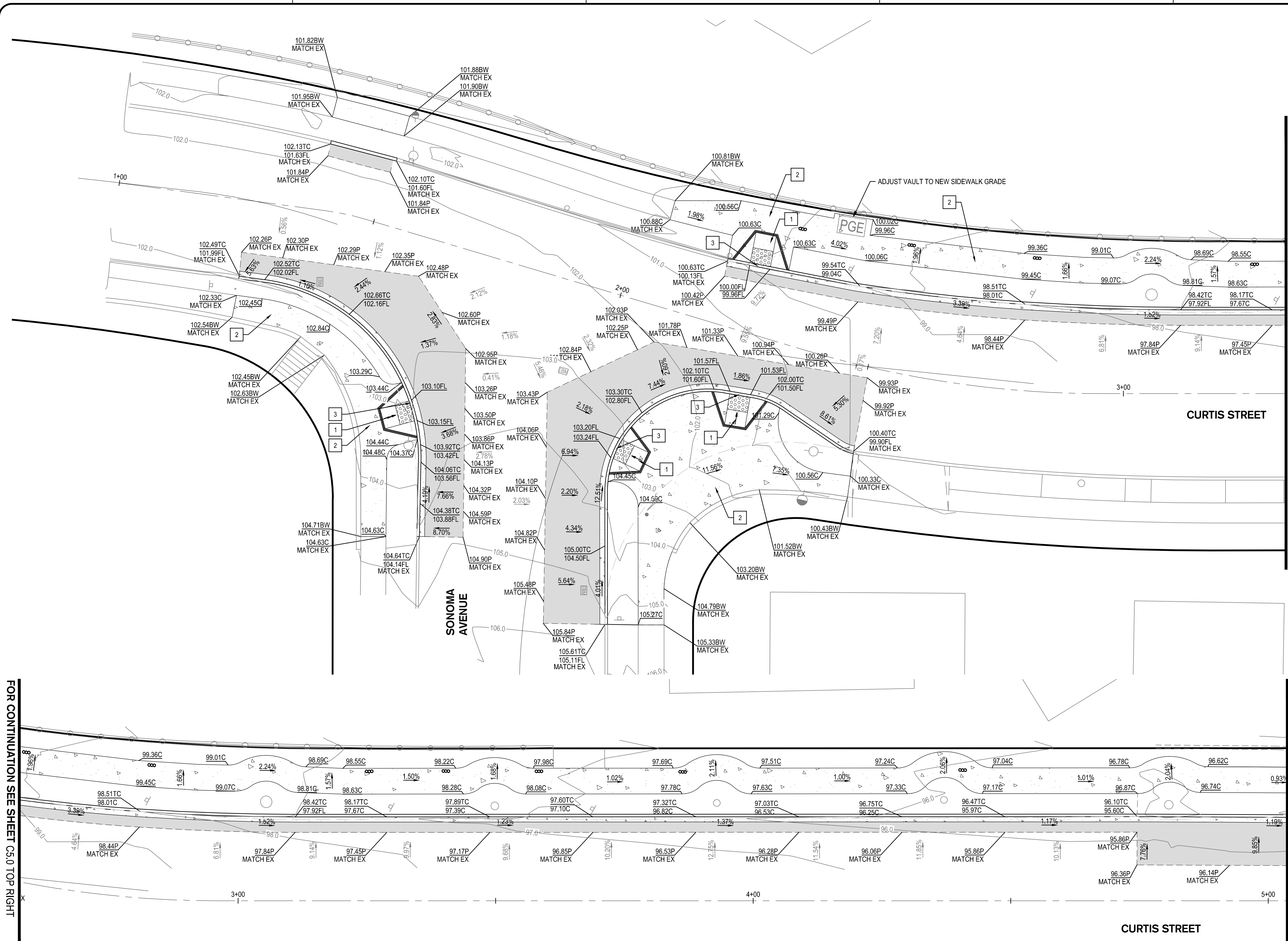
DRAWING: **C4.1** SHEET No. 6 OF 13

100% DESIGN DOCUMENTS



**KEY NOTES:**

- 1 1:12 MAX
- 2 2% MAX CROSS SLOPE
- 3 1% MAX CROSS SLOPE AT RAMP GUTTER PAN



FOR CONTINUATION SEE SHEET C5.0 BOTTOM RIGHT

FOR CONTINUATION SEE SHEET C5.1

FOR CONTINUATION SEE SHEET C5.0 TOP RIGHT

REV	DATE	DESCRIPTION

DESIGNED BY: AKM  
 DRAWN BY: AKM  
 CHECKED BY: PJS  
 REVIEWED BY:  
 DATE: June 16, 2014

REGISTRATION:

**SIEGFRIED**  
 3244 Brookside Road, Suite 100 Stockton, California 95219  
 209-943-2021 www.siegfriedeng.com Fx: 209-942-0214  
 DATE SIGNED: 11/09/14

CLIENT:

REVIEWED FOR GENERAL CONFORMANCE WITH THE CITY OF ALBANY STANDARD SPECIFICATIONS AND ORDINANCES

RAY CHAN, CITY ENGINEER.  
 DATE:

**ALBANY, CA**

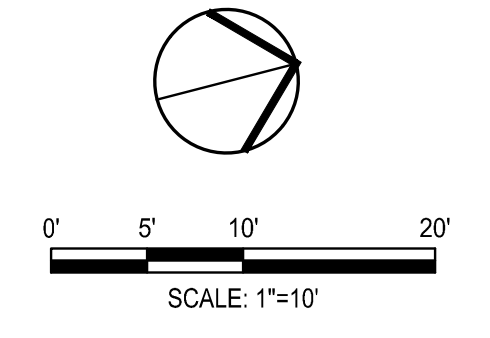
**PEDESTRIAN IMPROVEMENTS  
 EAST SIDE OF MARIN ELEMENTARY  
 SCHOOL**

City of Albany Contract No. C13-23  
 Caltrans Project No. SRTS10-04-ALBANY-1

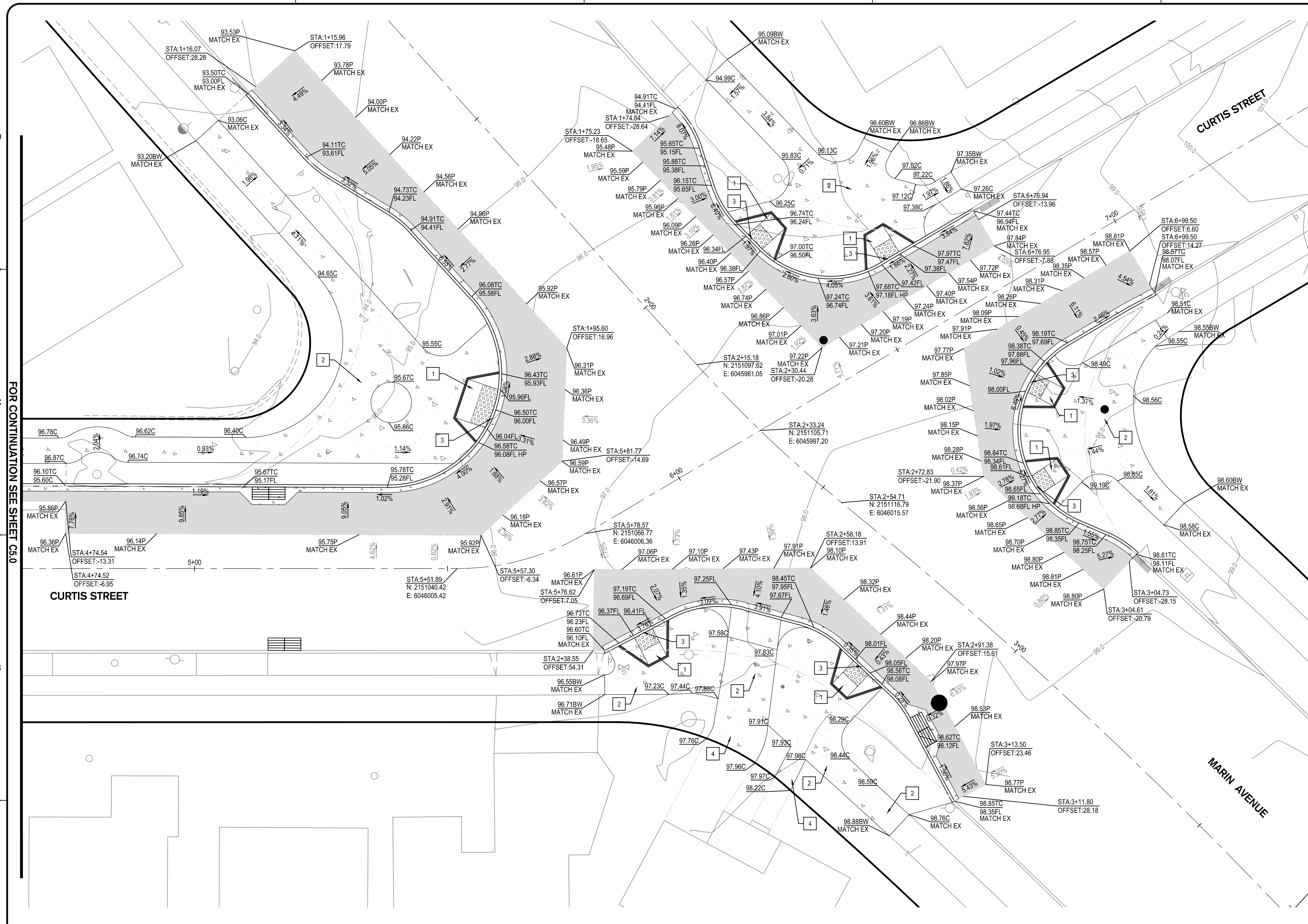
**GRADING PLAN**

DRAWING: **C5.0** SHEET No. 7 OF 13

100% DESIGN DOCUMENTS



- KEY NOTES:**
- 1 1:12 MAX
  - 2 2% MAX CROSS SLOPE
  - 3 1% MAX CROSS SLOPE AT RAMP GUTTER PAN
  - 4 5% MAX



FOR CONTINUATION SEE SHEET C5.0

REV	DATE	DESCRIPTION

DESIGNED BY: AKM  
 DRAWN BY: AKM  
 CHECKED BY: PJS  
 REVIEWED BY:  
 DATE: June 16, 2014

REGISTRATION:

**SIEGFRIED**

3244 Brookside Road, Suite 100 Stockton, California 95219  
 209-943-2021 www.siegfriedeng.com Fax: 209-942-0214

DATE SIGNED: 11/09/14

CLIENT:

REVIEWED FOR GENERAL CONFORMANCE WITH THE CITY OF ALBANY STANDARD SPECIFICATIONS AND ORDINANCES

RAY CHAN, CITY ENGINEER.  
 DATE:

**ALBANY, CA**

**PEDESTRIAN IMPROVEMENTS  
 EAST SIDE OF MARIN ELEMENTARY  
 SCHOOL**

City of Albany Contract No. C13-23  
 Caltrans Project No. SRTS10-04-ALBANY-1

**GRADING PLAN**

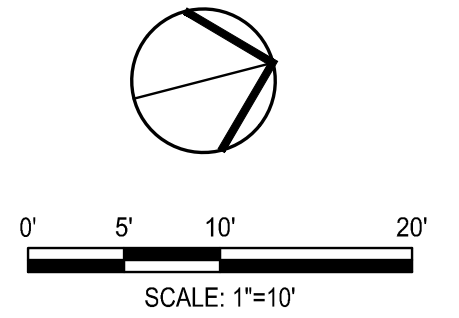
DRAWING: **C5.1** SHEET No. 8 OF 13

100% DESIGN DOCUMENTS





- NOTES:**
- 1 NEW CORRUGATED METAL ARCH PIPE (CMPA) PER AASHTO M190. 17"x13" WITH 2-2/3"x1/2" CORRUGATION.
  - 2 CONSTRUCT NEW TYPE "B" INLET PER CONTRA COSTA COUNTY STANDARD DETAIL CD211.
  - 3 ADJUST EXISTING VALVE BOX
  - 4 ADJUST EXISTING UTILITY BOX AND COVER TO GRADE.
  - 5 PROTECT IN PLACE EXISTING TREE.
  - 6 PROTECT IN PLACE EXISTING MAINLINE / INLET.
  - 7 INSTALL TYPE I MANHOLE PER CONTRA COSTA COUNTY STANDARD DETAIL 30.31
  - 8 INSTALL 5 LF 17"x13" CMPA @ S=0.01.
  - 9 INSTALL NEW TYPE II MANHOLE PER CONTRA COSTA COUNTY STANDARD DETAIL 3, CD311, CD301
  - 10 CONTRACTOR TO EXPOSE AND POTHOLE EXISTING STORM MAIN PRIOR TO COMMENCING WORK. IF DISCREPANCIES EXIST CONTACT THE PROJECT MANAGER IMMEDIATELY.
  - 11 CONNECT TO EXISTING STORM MANHOLE.
  - 12 RECONNECT EXISTING INLET TO NEW CMPA
  - 13 CONTRACTOR SHALL POTHOLE EXISTING UTILITIES PRIOR TO THE START OF THE STORM IMPROVEMENTS TO VERIFY NO CONFLICTS EXIST WITH THE DESIGN.
  - 14 RECONNECT EXISTING CURB DRAIN AND EXTEND TO NEW CURB PER CITY OF ALBANY STANDARD DETAIL NO. SD-513.



REV	DATE	DESCRIPTION

DESIGNED BY: AKM  
 DRAWN BY: AKM  
 CHECKED BY: PJS  
 REVIEWED BY:  
 DATE: June 16, 2014

REGISTRATION:

**SIEGFRIED**  
 CIVIL ENGINEERING  
 STRUCTURAL ENGINEERING  
 ARCHITECTURE  
 LANDSCAPE ARCHITECTURE  
 SURVEYING  
 3244 Brookside Road, Suite 100 Stockton, California 95219  
 209-943-2021 www.siegfriedeng.com Fx: 209-942-0214  
 DATE SIGNED: 11/09/14

CLIENT: CITY OF ALBANY

REVIEWED FOR GENERAL CONFORMANCE WITH THE CITY OF ALBANY STANDARD SPECIFICATIONS AND ORDINANCES

RAY CHAN, CITY ENGINEER.  
 DATE:

**ALBANY, CA**

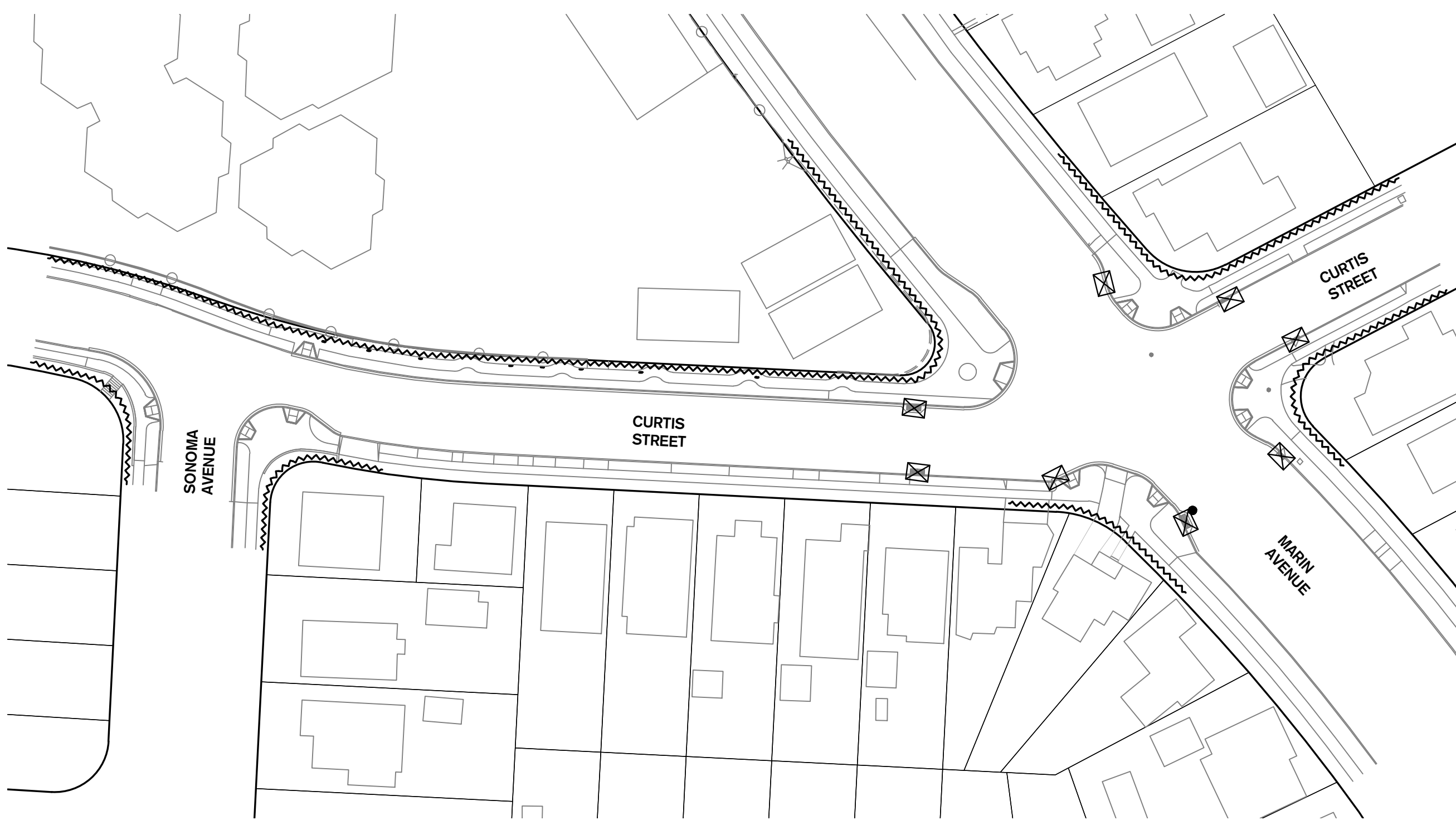
**PEDESTRIAN IMPROVEMENTS  
 EAST SIDE OF MARIN ELEMENTARY  
 SCHOOL**

City of Albany Contract No. C13-23  
 Caltrans Project No. SRTS10-04-ALBANY-1

**UTILITY PLAN**

DRAWING: **C6.0** SHEET No. 10 OF 13

100% DESIGN DOCUMENTS



EROSION CONTROL PLAN

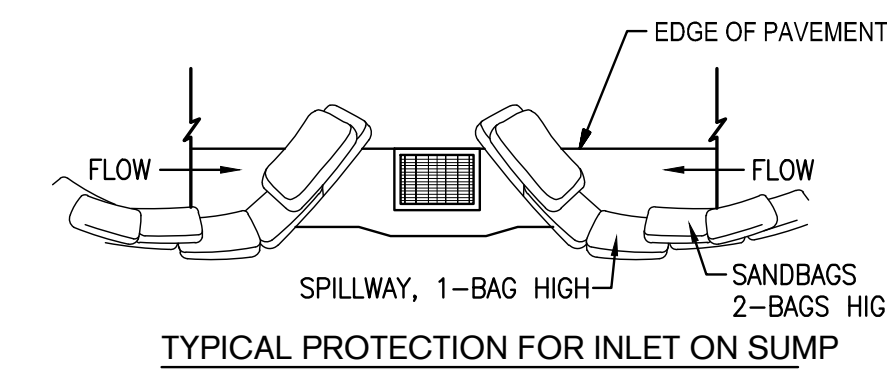
**EROSION CONTROL LEGEND**

SYMBOL	DESCRIPTION
	FIBER ROLLED WATTLE DETAIL 2
	DRAIN INLET PROTECTION TYPE 3 DETAIL 4
	UNCOMPLETED DRAIN INLET PROTECTION TYPE 2 DETAIL 6
	STRAW WITH BINDER
	STABILIZED CONSTRUCTION ENTRANCE TC-(1)(3) DETAIL 1
	CONCRETE WASHOUT DETAIL 3

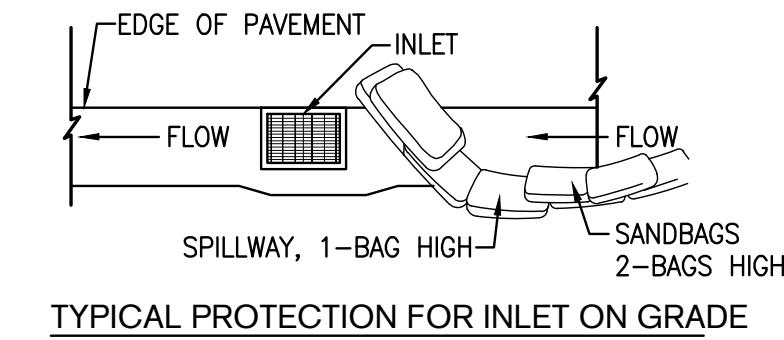
**EROSION CONTROL GENERAL NOTES**

- PLANS ARE DIAGRAMMATIC AND ARE NOT INTENDED TO SHOW ALL OFFSETS. THE SITE IS DYNAMIC AND CHANGES ON A DAILY BASIS. CHANGES SHOULD BE MADE ACCORDING TO EXISTING CONDITIONS. BECAUSE IT IS IMPOSSIBLE TO PREDICT ALL POSSIBLE SITUATIONS, CONTRACTOR SHALL USE BEST MANAGEMENT PRACTICES TO ENSURE QUALITY CONTROL.
- THE CONTRACTOR SHALL REVIEW THE CURRENT STORM WATER POLLUTION PREVENTION PLAN (SWPPP). IT IS THE CONTRACTOR'S SOLE RESPONSIBILITY FOR CONDUCTING HIS/HER OPERATIONS IN ADHERENCE TO THE SWPPP. THE CONTRACTOR IS RESPONSIBLE FOR ANY FINES, DELAYS, AND/OR DAMAGES RESULTING FROM ANY STATE WATER QUALITY CONTROL BOARD SANCTIONS CAUSED BY THE OPERATION OF THE CONTRACTOR OR HIS/HER SUBCONTRACTORS.
- THE FOLLOWING PLANS ARE ACCURATE FOR EROSION CONTROL PURPOSES ONLY. THE CONTRACTOR SHALL FOLLOW THESE PLANS UNLESS FIELD CONDITIONS DICTATE MODIFICATION. IF MODIFICATION IS NECESSARY, A SWPPP AMENDMENT MUST BE DONE. THIS MAY REQUIRE MODIFICATION TO THESE DRAWINGS AND ENGINEER CONCURRENCE.
- INSPECT AND REPAIR FILTERS AFTER EACH STORM EVENT. REMOVE SEDIMENT WHEN 1/2 OF THE FILTER DEPTH HAS BEEN FILLED. REMOVED SEDIMENT SHALL BE DEPOSITED IN AN AREA TRIBUTARY TO A SEDIMENT BASIN OR OTHER FILTERING MEASURE. SEDIMENT AND GRAVEL SHALL BE IMMEDIATELY REMOVED FROM PAVEMENT OF ROAD.
- UNFINISHED AND DISTURBED ARE TO BE PROTECTED WITH AN APPLICATION OF BLOWN STRAW AND ORGANIC BINDER.
 

ITEM	LB/ACRE
STRAW	4,000
ORGANIC BINDER	200
- ALTERNATE INLET PROTECTION SHALL BE USED ON ROADS OPEN TO THE PUBLIC IF ANY HAZARDOUS MATERIALS OR WASTES WHICH HAVE BEEN TREATED, STORED, DISPOSED, SPILLED, OR LEAKED IN SIGNIFICANT QUANTITIES ONTO THE CONSTRUCTION SITE. THE CONTRACTOR SHALL BE RESPONSIBLE TO REMOVE THEM FROM THE SITE AND DISPOSE OF PROPERLY.
- CHLORINATED OR DECHLORINATED WATER SHALL NOT BE DISCHARGED INTO THE STORM DRAIN SYSTEM. THE CONTRACTOR MAY DISPOSE THIS WATER INTO THE SANITARY SEWER SYSTEM UPON APPROVAL BY THE GOVERNING AGENCY.
- THE CONTRACTOR SHALL KEEP MAINTENANCE, INSPECTION, AND REPAIR PROCEDURES TO ENSURE THAT ALL GRADED SURFACES, WALLS, BERMS, DRAINAGE STRUCTURES, VEGETATION, EROSION AND SEDIMENT CONTROL MEASURES, AND OTHER CONTROLS ARE MAINTAINED IN GOOD AND EFFECTIVE CONDITION AND ARE PROMPTLY REPAIRED OR RESTORED WHEN NECESSARY. ANY DEWATERING WATER SHALL NOT BE DISCHARGED DIRECTLY INTO THE STORM WATER SYSTEM, AND SHALL NOT BE DISCHARGED INTO THE SEWER SYSTEM.
- ALL DEWATERING WATER MUST BE CHANNLED THROUGH AN APPROVED SEDIMENT BARRIER PRIOR TO THE WATER ENTERING THE STORM SYSTEM.
- PAVEMENT CLEANING- FLUSHING OF STREETS/ PARKING LOTS TO REMOVE DIRT AND CONSTRUCTION DEBRIS IS PROHIBITED UNLESS PROPER SEDIMENT CONTROLS ARE USED. PREFERABLY, AREAS REQUIRING CLEANING SHOULD BE SWEEPED.
- ALL STOCKPILES OF MATERIALS THAT ARE NOT GOING TO BE USED FOR 14 DAYS SHALL BE COVERED.
- CONTRACTOR TO USE BEST MANAGEMENT PRACTICES (BMPs) THROUGHOUT CONSTRUCTION. USE ALL BMPs THAT APPLY TO THE PROJECT, INCLUDING BUT NOT LIMITED TO THE FOLLOWING BMPs:
  - DRAIN INLET PROTECTION - CALIFORNIA STORMWATER BMP HANDBOOK SECTION SE-10
  - SOLID WASTE MANAGEMENT - CALIFORNIA STORMWATER BMP HANDBOOK SECTION WM-5
  - MATERIAL STORAGE - CALIFORNIA STORMWATER BMP HANDBOOK SECTION WM-1
  - PAVING - CALIFORNIA STORMWATER BMP HANDBOOK SECTION NS-3
  - DUST CONTROL, SEDIMENT CONTROL, EROSION CONTROL AND CONCRETE WASHOUT AREAS - SHOWN ON THIS SHEET WITH DETAILS

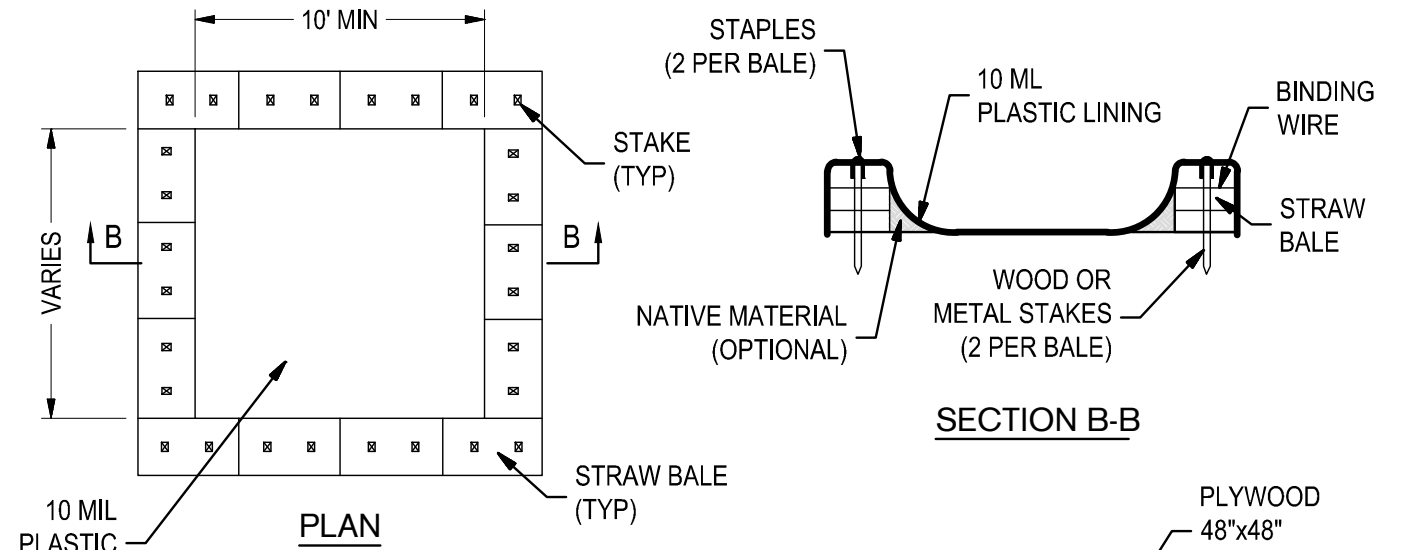
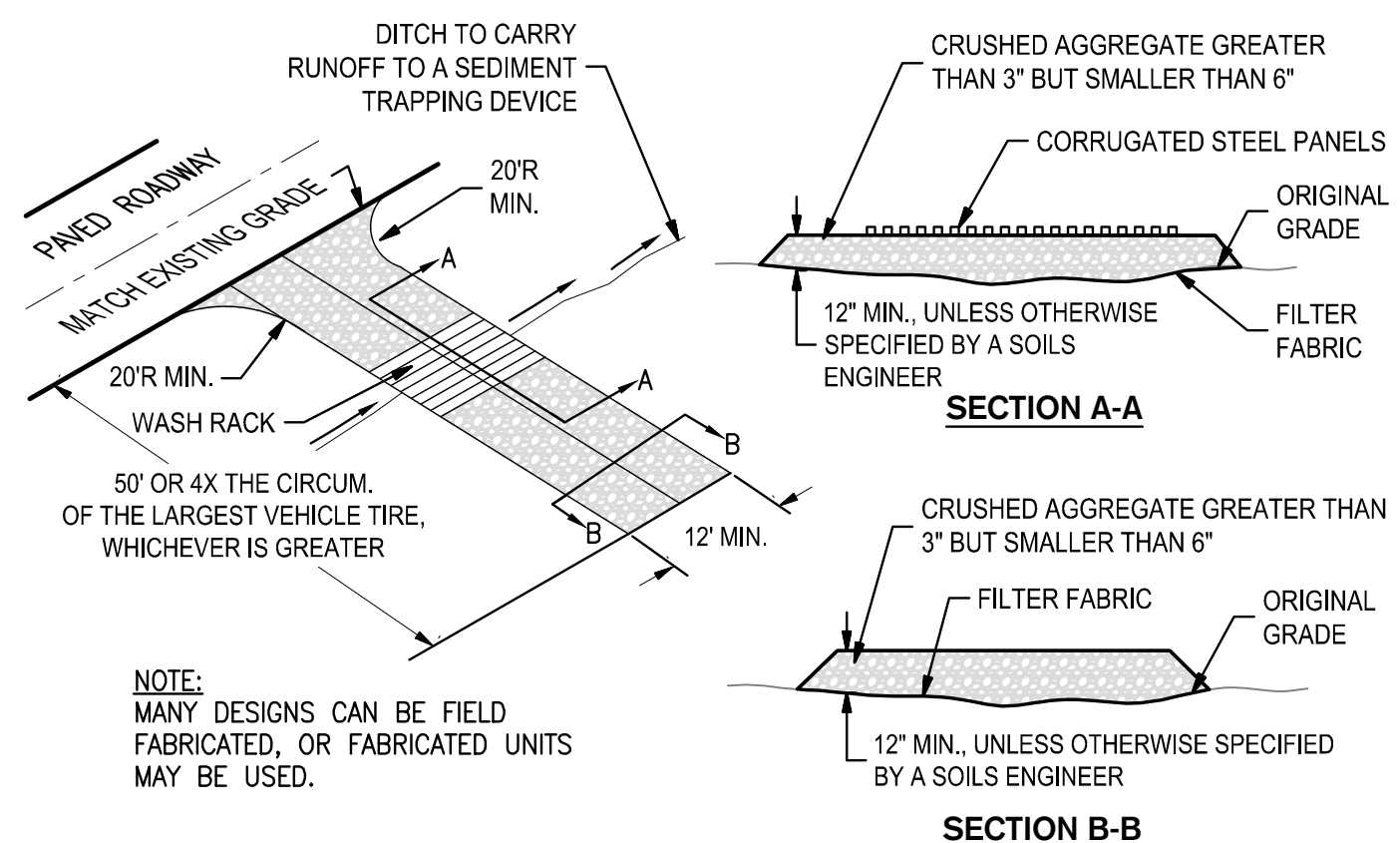


TYPICAL PROTECTION FOR INLET ON SUMP

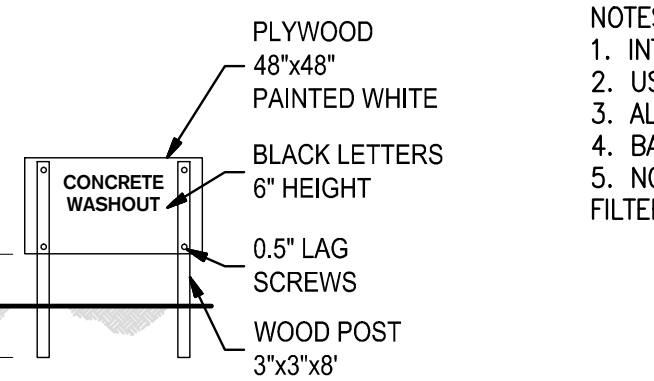


TYPICAL PROTECTION FOR INLET ON GRADE

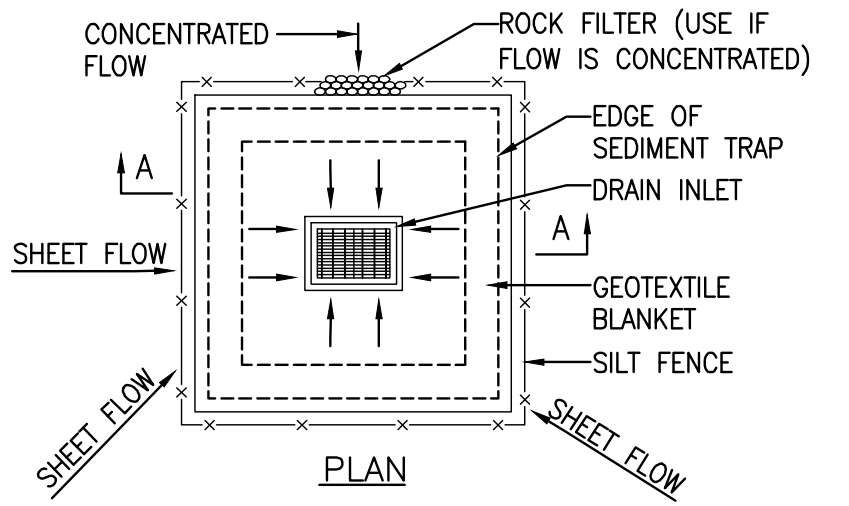
- NOTES:
- INTENDED FOR SHORT-TERM USE.
  - USE TO INHIBIT NON-STORM WATER FLOW.
  - ALLOW FOR PROPER MAINTENANCE AND CLEANUP.
  - BAGS MUST BE REMOVED AFTER ADJACENT OPERATION IS COMPLETED.
  - NOT APPLICABLE IN AREAS WITH HIGH SILTS AND CLAYS WITHOUT FILTER FABRIC.



- NOTES:
- ACTUAL LAYOUT DETERMINED IN FIELD.
  - THE CONCRETE WASHOUT SIGN SHALL BE INSTALLED WITHIN 30 FT. OF THE TEMPORARY CONCRETE WASHOUT FACILITY.



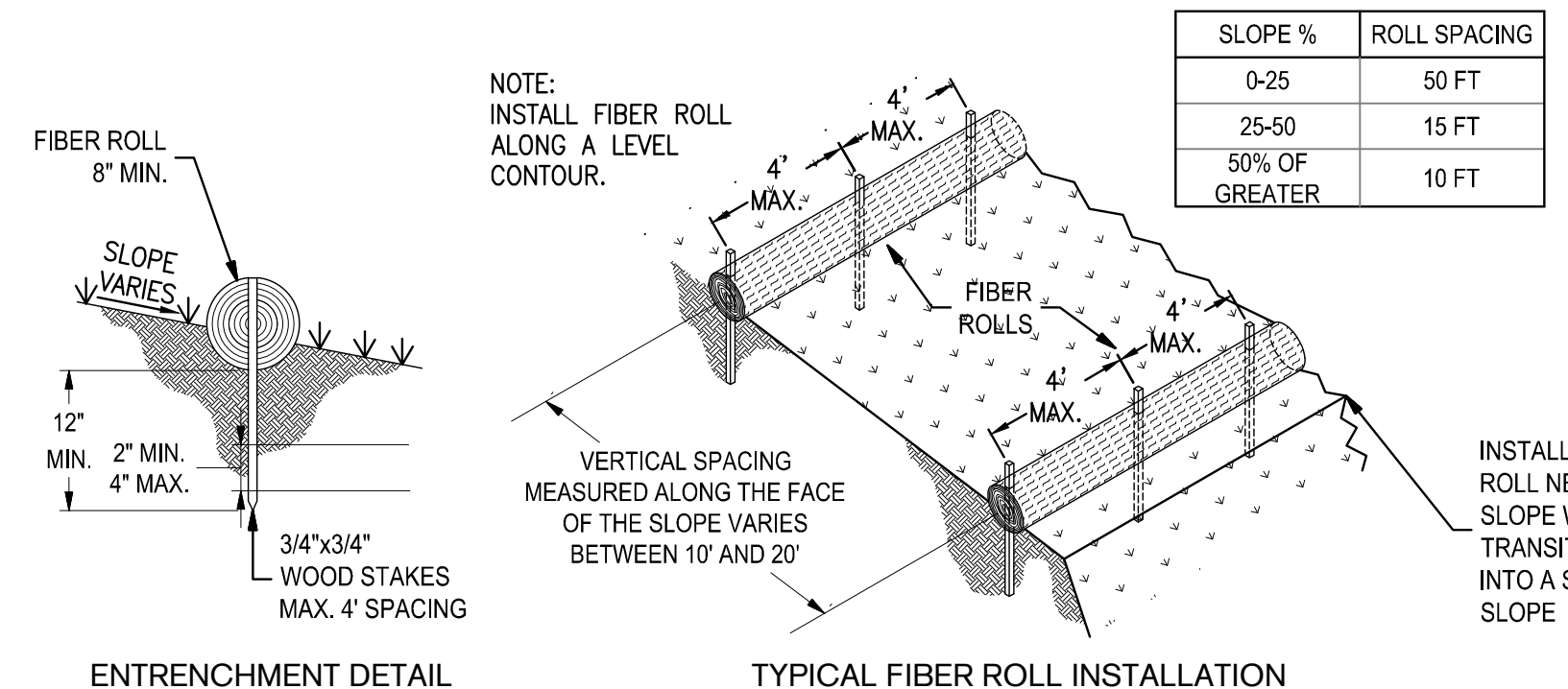
5 DROP INLET PROTECTION TYPE 3 SCALE: NTS



- NOTES:
- FOR USE IN CLEARED AND GRUBBED AND IN GRADED AREAS.
  - SHAPE BASIN SO THAT LONGEST INFLOW AREA FACES LONGEST LENGTH OF TRAP.
  - FOR CONCENTRATED FLOWS, SHAPE BASIN IN 2:1 RATION WITH LENGTH ORIENTED TOWARDS DIRECTION OF FLOW.

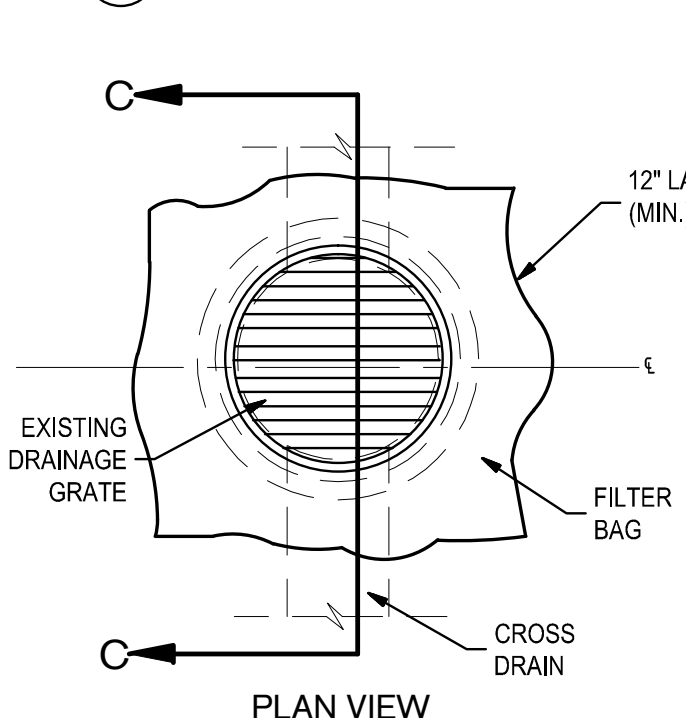
6 DI PROTECTION - TYPE 2 SCALE: NTS

1 STABILIZED CONSTRUCTION ENTRANCE/OUTLET TIRE WASH SCALE: NTS

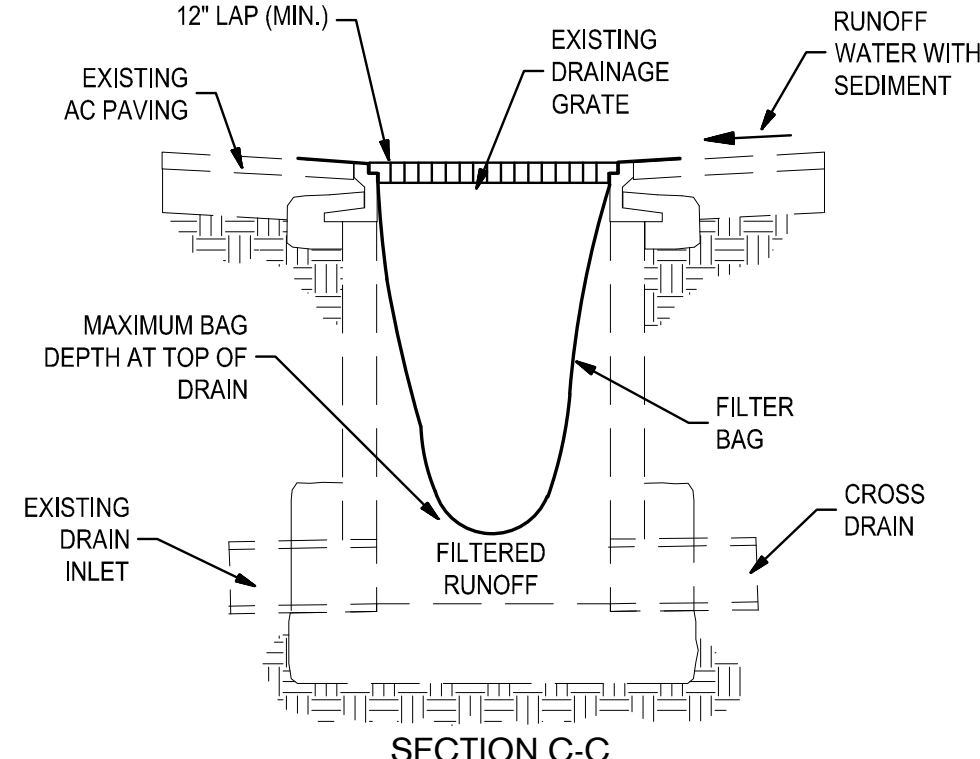


2 FIBER ROLLS SCALE: NTS

3 CONCRETE WASHOUT SCALE: NTS



4 TEMPORARY GRAVEL BAG FILTER AT DROP INLET SCALE: NTS



REV	DATE	DESCRIPTION

DESIGNED BY:	AKM
DRAWN BY:	AKM
CHECKED BY:	PJS
REVIEWED BY:	
DATE:	June 16, 2014

REGISTRATION:

3244 Brookside Road, Suite 100 Stockton, California 95219  
209-943-2021 www.siegfriedeng.com Fx: 209-942-0214

DATE SIGNED: 11/09/14

CLIENT:

REVIEWED FOR GENERAL CONFORMANCE WITH THE CITY OF ALBANY STANDARD SPECIFICATIONS AND ORDINANCES

RAY CHAN, CITY ENGINEER.  
DATE: \_\_\_\_\_

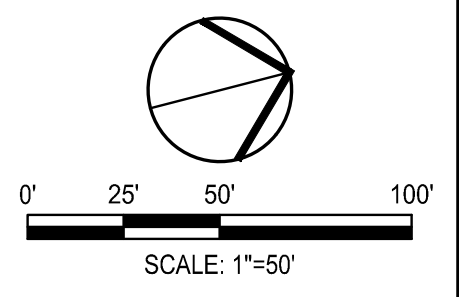
**ALBANY, CA**

**PEDESTRIAN IMPROVEMENTS EAST SIDE OF MARIN ELEMENTARY SCHOOL**

City of Albany Contract No. C13-23  
Caltrans Project No. SRTS10-04-ALBANY-1

**EROSION CONTROL PLAN**

DRAWING: **C7.0** SHEET No. 13 OF 13





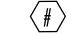
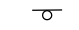
100% DESIGN DOCUMENTS

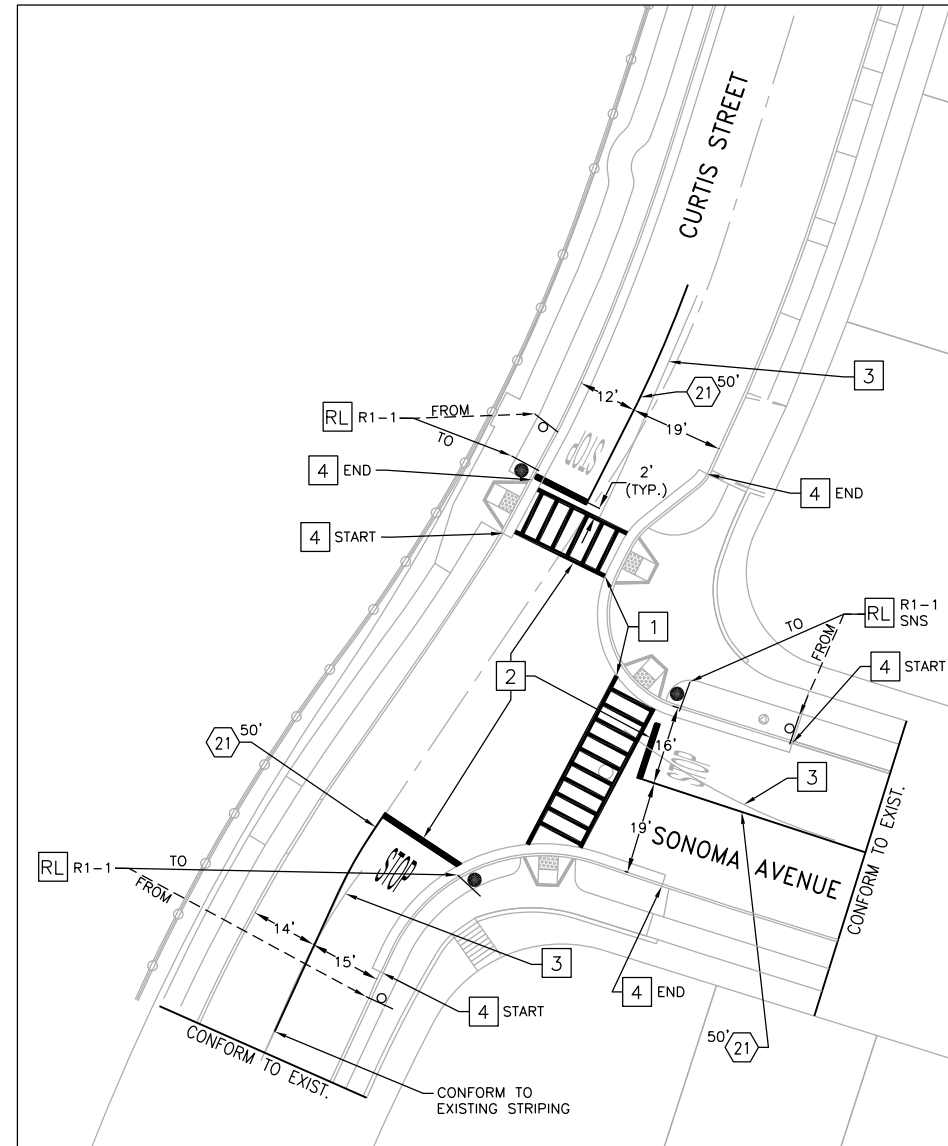


**CONSTRUCTION NOTES: (THIS SHEET ONLY)**

- 1 INSTALL 11' O.C. YELLOW CROSSWALK. OUTER EDGES SHALL BE 12", TRANSVERSE MARKINGS SHALL BE 12" SPACED 3' O.C.
- 2 INSTALL 12" WHITE LIMIT LINE.
- 3 REMOVE EXISTING PAVEMENT STRIPE.
- 4 PAINT CURB RED

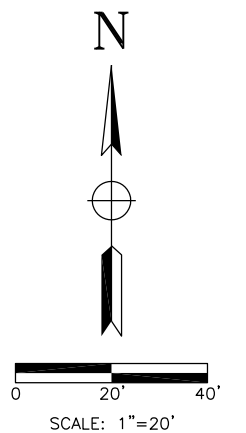
**LEGEND:**

-  SOLAR POWERED RECTANGULAR RAPID FLASH BEACON SIGN
-  ROADSIDE SIGN ON METAL POLE
-  PROPOSED CALTRANS PAVEMENT DELINEATION DETAIL NUMBER
-  EXISTING ROADSIDE SIGN ON METAL POLE



**ADD ALTERNATIVE  
BID ITEM**

**95% SUBMITTAL  
NOT FOR CONSTRUCTION**



REV	DATE	DESCRIPTION


DESIGNED BY: RP  
 DRAWN BY: RP  
 CHECKED BY: AP  
 REVIEWED BY: AP  
 DATE: June 17, 2014

REGISTRATION:

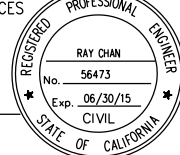



**TJKM Transportation Consultants**  
 4305 Hacienda Drive, Suite 550  
 Pleasanton, CA 94588  
 Phone: (925) 463-0611 Fax: (925) 463-3690  
 email: tjkm@tjkm.com

CLIENT:



REVIEWED FOR GENERAL CONFORMANCE WITH THE CITY OF ALBANY STANDARD SPECIFICATIONS AND ORDINANCES

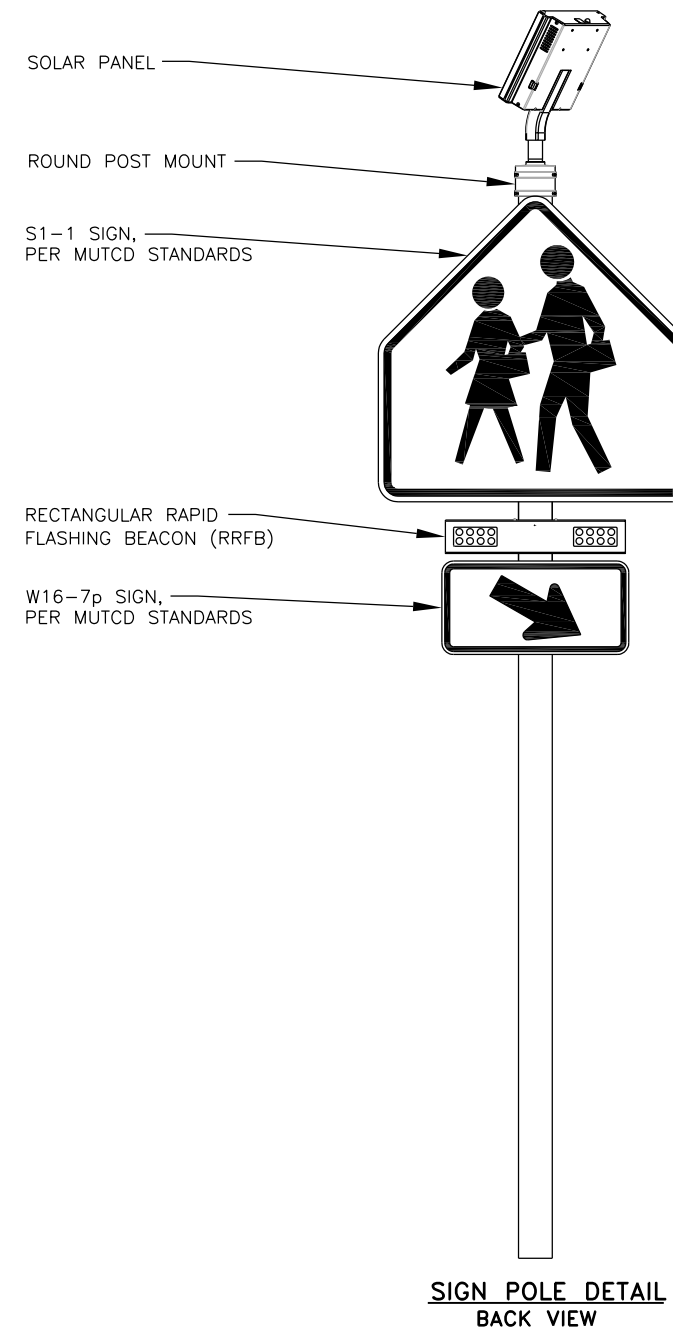
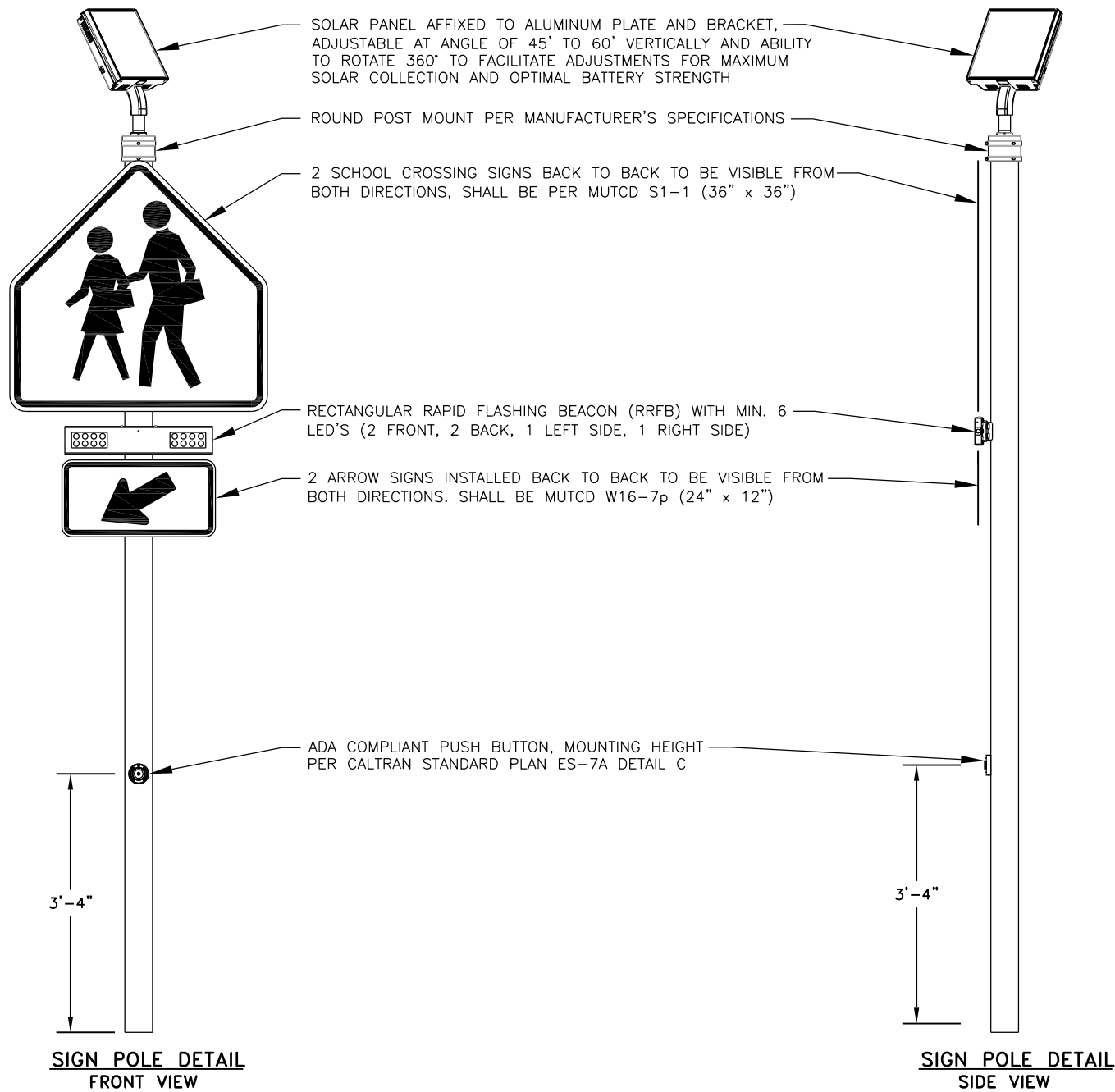


RAY CHAN  
 CITY ENGINEER  
 DATE: \_\_\_\_\_

**ALBANY, CA**  
 Marin Avenue/Curtis Street  
 Safe Routes to School  
 City of Albany Contract No. 14-12  
 Caltrans Project No. SR2SL-5178(014)

PAVEMENT DELINEATION AND SIGNAGE PLAN  
 CURTIS ST / SONOMA AVE

DRAWING: **PD-02** SHEET No. 2 OF 3



**95% SUBMITTAL  
NOT FOR CONSTRUCTION**

REV	DATE	DESCRIPTION

DESIGNED BY: RP  
 DRAWN BY: RP  
 CHECKED BY: AP  
 REVIEWED BY: AP  
 DATE: June 17, 2014

REGISTRATION:

**TJKM Transportation Consultants**  
 4305 Hacienda Drive, Suite 550  
 Pleasanton, CA 94588  
 Phone: (925) 463-0611 Fax: (925) 463-3690  
 email: tjkm@tjkm.com

CLIENT:

REVIEWED FOR GENERAL CONFORMANCE WITH THE CITY OF ALBANY STANDARD SPECIFICATIONS AND ORDINANCES

RAY CHAN  
 CITY ENGINEER  
 DATE: \_\_\_\_\_

**ALBANY, CA**  
 Marin Avenue/Curtis Street  
 Safe Routes to School  
 City of Albany Contract No. 14-12  
 Caltrans Project No. SR25L-5178(014)

RECTANGULAR FLASHING BEACON POST DETAILS

DRAWING: **PD-03** SHEET No. 3 OF 3