

**VOLUNTEER CAPITAL PROJECT
WATERFRONT COVE ENHANCEMENT PROJECT**

1. PROJECT PURPOSE

Improve the trailhead area around the “Cove” landscape art feature.

2. PROJECT DESCRIPTION

Update a 12,000 square foot area north and east of the “Cove.” Improvements include minor site preparation, installation of urbanite pavers, new trashcans, bike racks, and benches to create an attractive destination that draws visitor attention to the views of San Francisco, the Golden Gate Bridge, and the Albany Beach. No changes would be made to roads, trails, terrain, or natural systems in the area. Project is located on city right-of-way north of the East Bay Regional Park District’s Albany Beach project.

3. SCOPE OF WORK

Phase One (preparatory):

- Stake out property lines and layout of work

Phase Two (Volunteer workdays):

- Cut selected bollards
- Minor site preparation with drain rock
- Relocate/add trash cans
- Relocate existing benches
- Install urbanite pavers and decomposed granite (“DG”)

Phase Three (upon delivery):

- Install new bike racks
- Install new trash/recycle cans
- Install new benches

4. PROJECT LOCATION

City of Albany portion of the Cove area of the Albany Waterfront Park

5. SPONSORING AGENCY

- Waterfront Committee
- Albany Strollers and Rollers

6. ESTIMATED COST

To be determined based on final selection of bike racks, trash cans, and benches. Cost of bike racks estimated at \$5,000 to be purchased by Albany Strollers & Rollers. Set of three trash and recycle cans estimated at \$7,000. Future cost of benches and picnic tables to be determined.

7. FINANCIAL COMMITMENT

Albany Strollers & Rollers will purchase/reimburse \$5,000 for the new bike racks. The City Council has budgeted \$50,000 from the City's Local Allocation of EBRPD Measure WW funds. These funds are available project-related materials and services.

8. MAINTENANCE PLAN

Improvements to be maintained by the City of Albany Public Works Division

9. PRIMARY CONTACT PERSON AND CONTACT INFORMATION

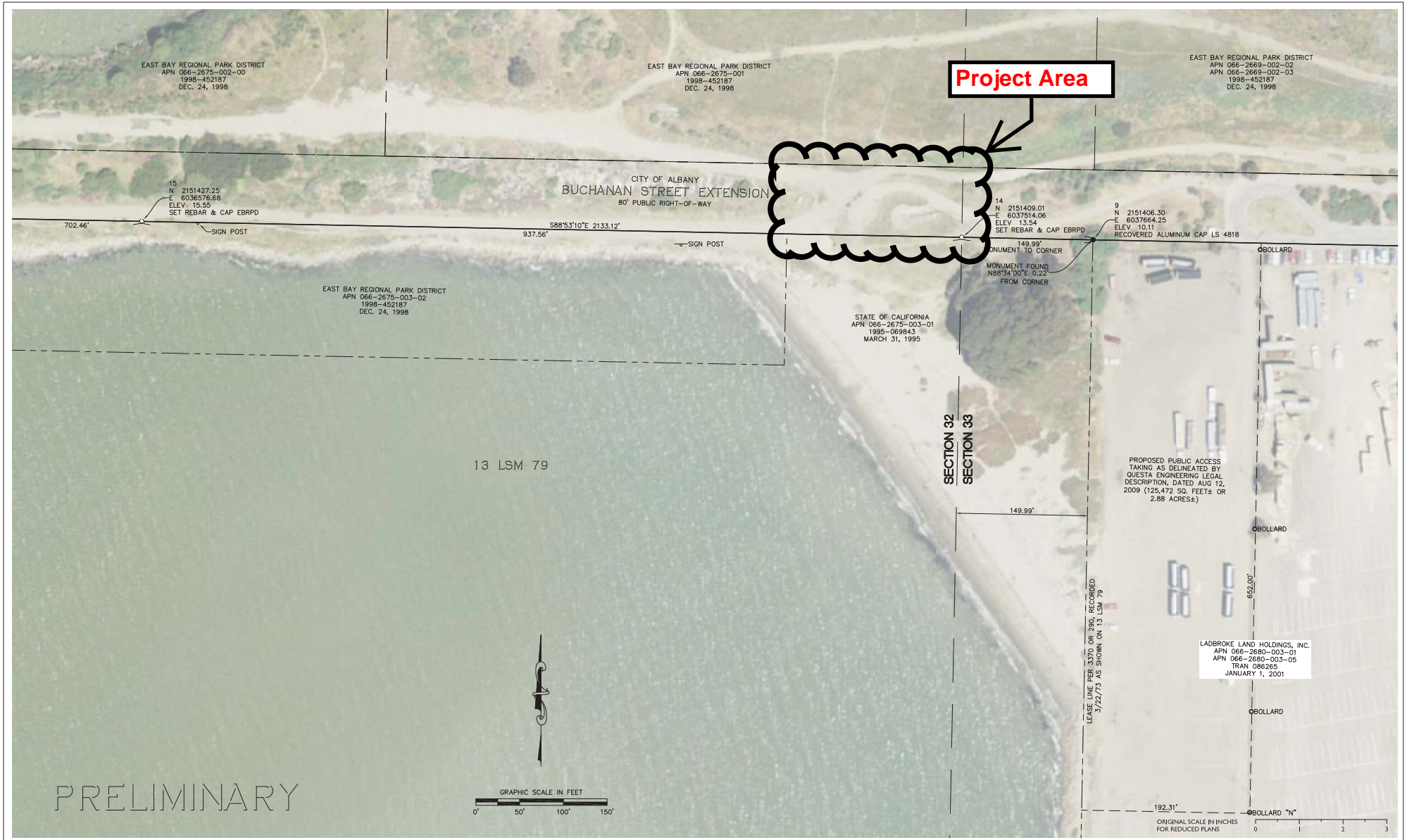
- Amy Smolens, Albany Strollers & Rollers
- Francesco Papalia, Chair Waterfront Committee
- Claire Napawan, Waterfront Committee Member
- Tony Wolcott, Public Works Department
- Jeff Bond, Community Development Department

10. PROPOSED PROJECT SCHEDULE

- October 3 and November 7, 2012: Waterfront Committee meeting
- October 11, 2012: Information report to Parks and Recreation Commission
- November 19, 2012: City Council approval
- October - December 2012: Volunteer work days
- December 2012: Installation of bike racks, trash cans, and benches (tbd based on actual delivery)

11. PRELIMINARY DRAWINGS

Attached



REVISIONS	DATE
△	
△	
△	

EAST BAY REGIONAL PARK DISTRICT
 2950 PERALTA OAKS COURT, OAKLAND, CA 94605 WWW.EBPARKS.ORG 888-327-2757

APPROVED
 design:
 operations:

scale: 1" = 50'
 drawn: GSTJ
 checked:
 date: 2011.08.02

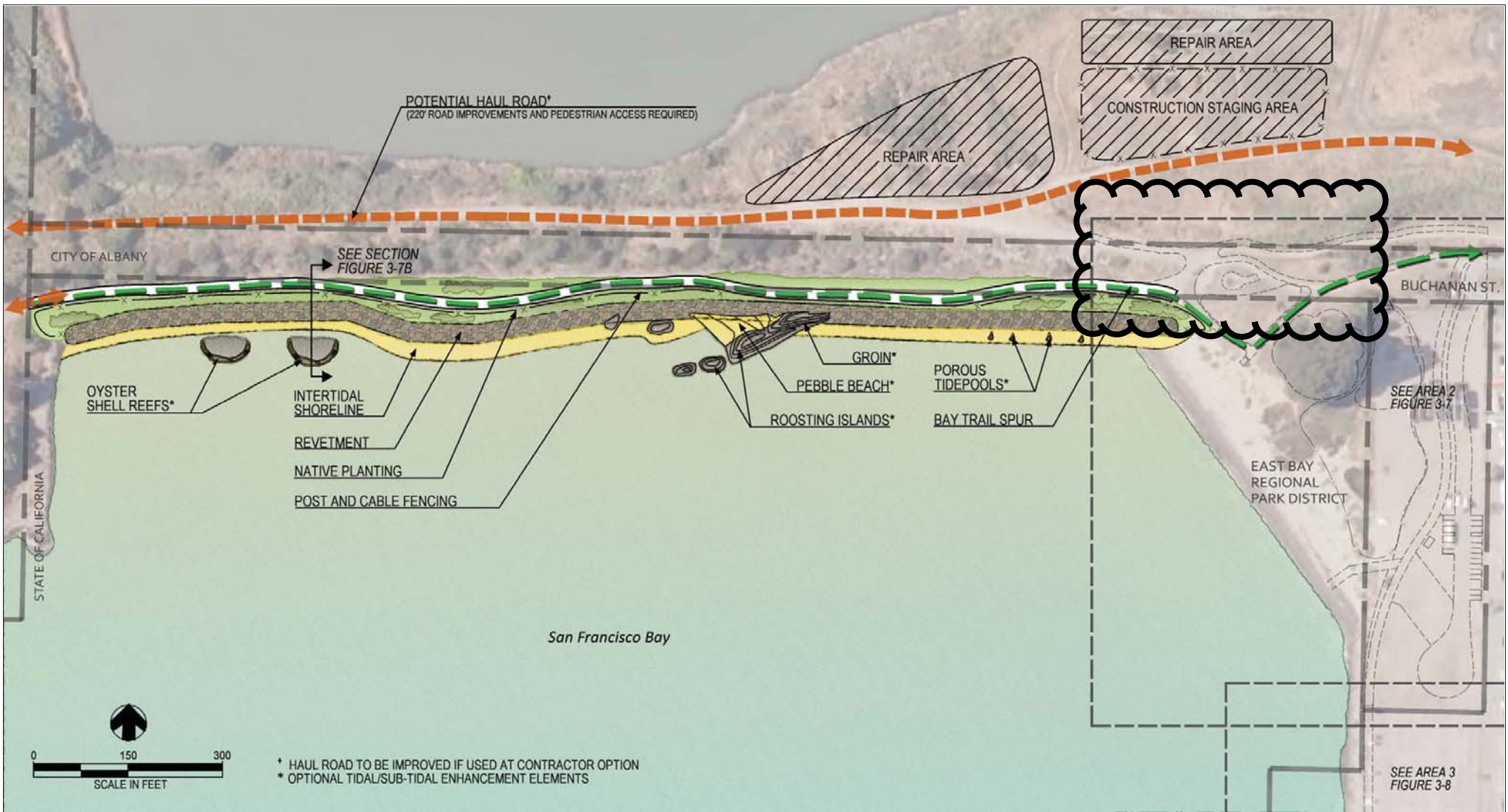
PRELIMINARY AERIAL & BOUNDARY EXHIBIT
 Eastshore State Park Trail
 Albany Bulb
 Albany, California
 PROJECT NO. 104861F

SHEET NO. 2
 OF: 2

CONTRACT NO.

T:\PARKS\Eastshore State Park Trail\04861F\Draw\04861Fsheet.dwg 6/20/11 03:54:20 PM gcp/ah

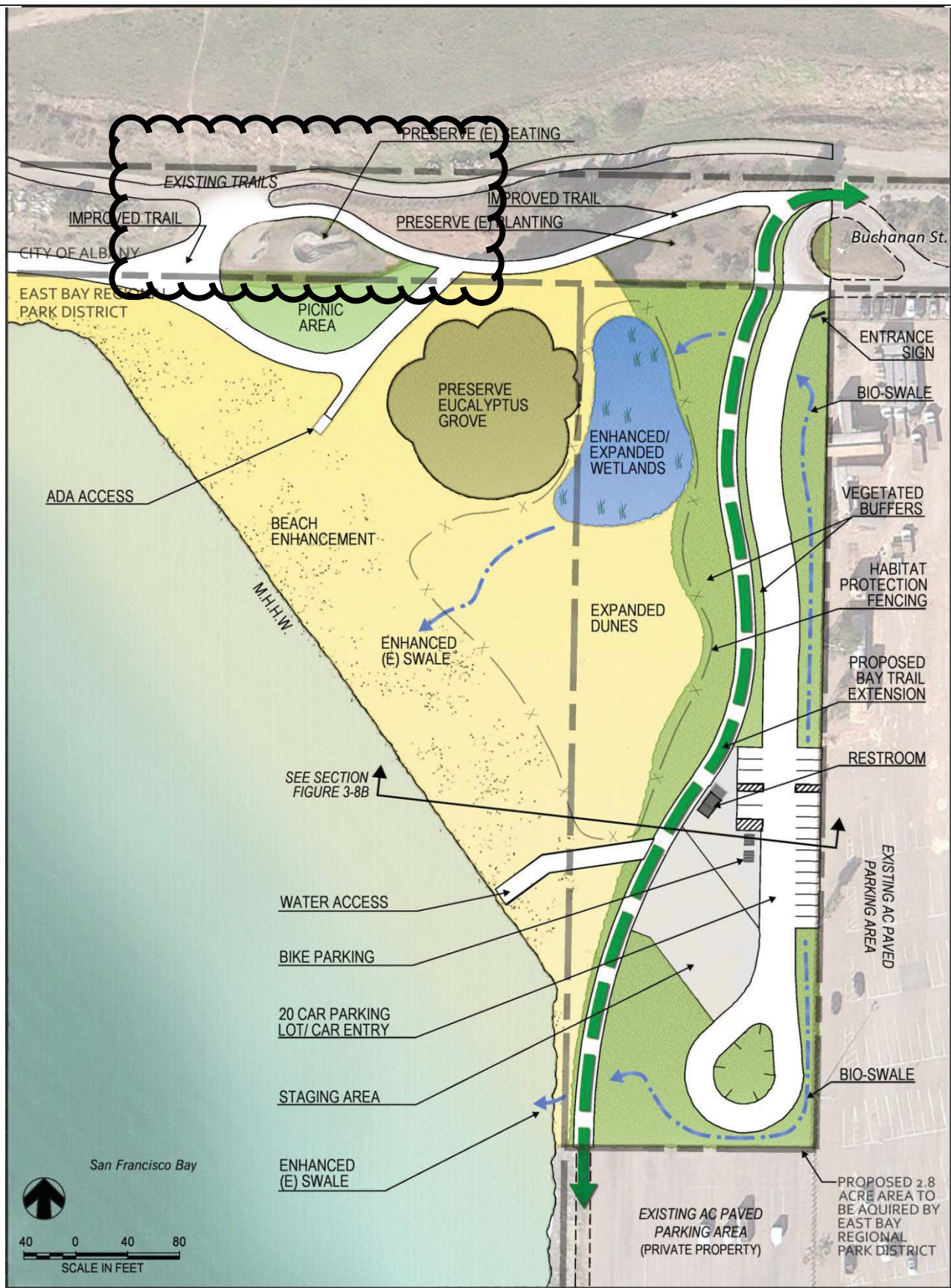


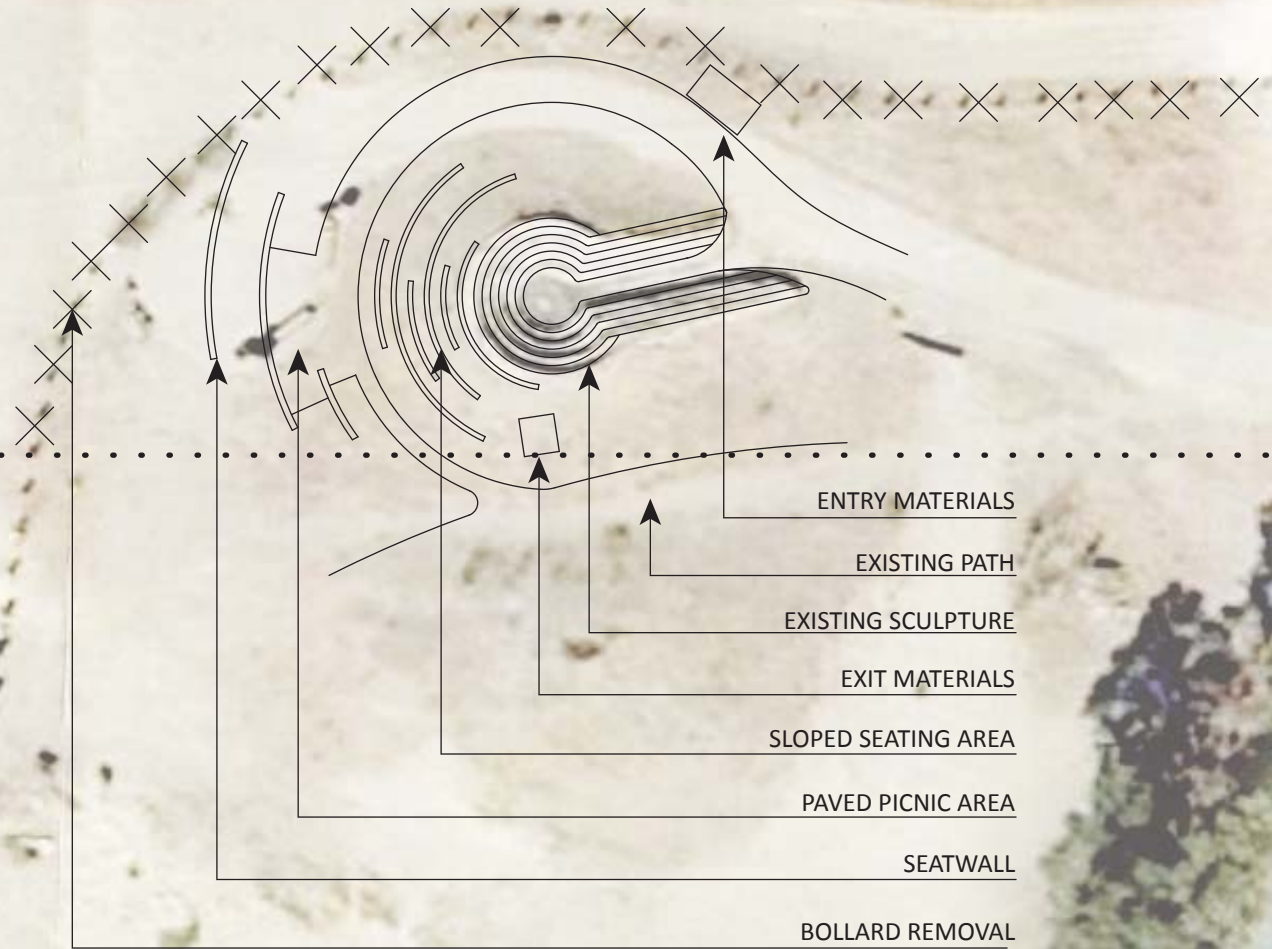


East Bay Regional Park District
P.O. Box 5381, Oakland, CA 94605
www.ebparks.org

FIGURE 3-7A

AREA 1 SITE PLAN
ALBANY BEACH RESTORATION AND PUBLIC ACCESS
AT EASTSHORE STATE PARK





ALBANY WATERFRONT - COVE SITE CONTEXT PLAN

ALBANY WATERFRONT - COVE ALTERNATIVE 2

ENTRY SIGNAGE

BICYCLE RACKS

GROUND COVER

URBANITE SEATWALL

URBANITE PAVER STEP

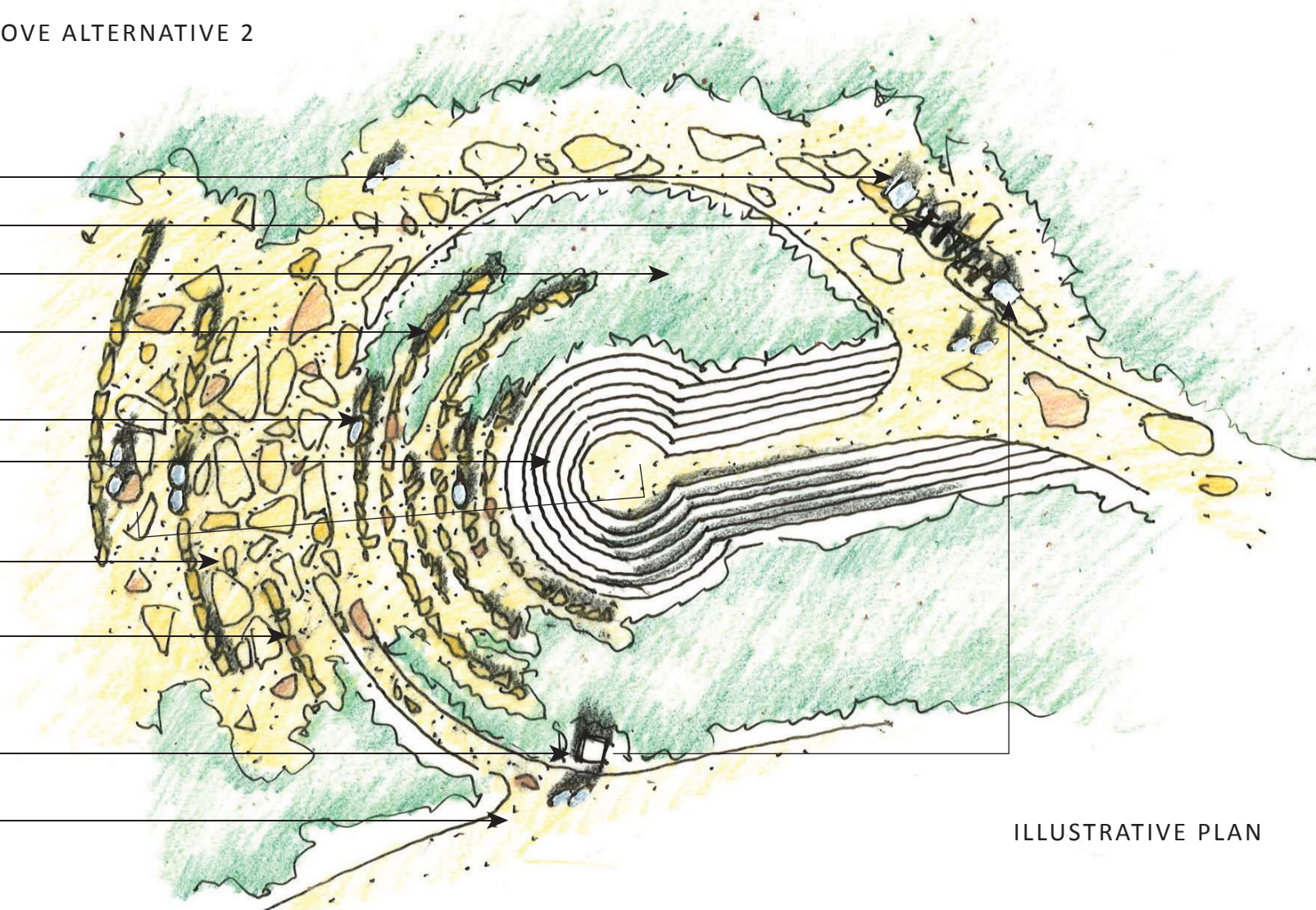
EXISTING SCULPTURE

URBANITE & CRUSHED STONE
PAVED PICNIC AREA

URBANITE SEATWALL

TRASH/RECYCLE RECEPTICLES

EXISTING PATH



ILLUSTRATIVE PLAN

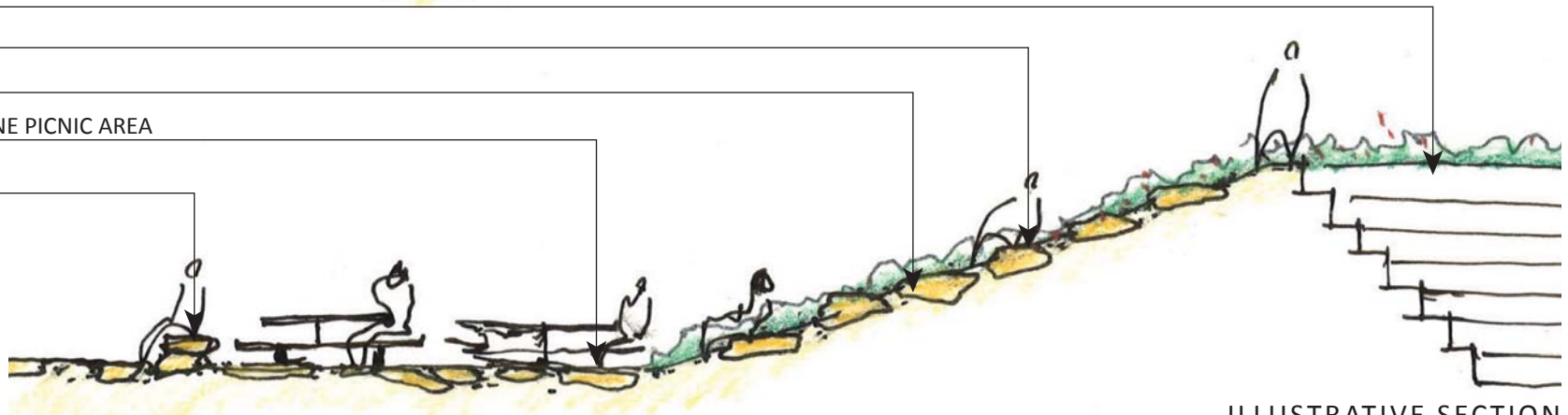
EXISTING SCULPTURE

URBANITE STEP/SEATWALL

CRUSHED STONE SLOPE

URBANITE & CRUSHED STONE PICNIC AREA

URBANITE SEATWALL



ILLUSTRATIVE SECTION

DUMOR SITE FURNISHINGS REPRESENTED BY ROSS RECREATION:



RECEPTACLE 157 - SOLANO AVE.



RECEPTACLE 102 - ALBANY PARKS



BIKE RACK 83 - ALBANY AQUATIC CENTER - \$169 ea.

DERO BIKE RACKS:



RECYCLE - \$4774 PER DOZEN

LANDSCAPE FORMS:



POE LITTER RECEPTACLES - GGNRA - \$1248 ea.



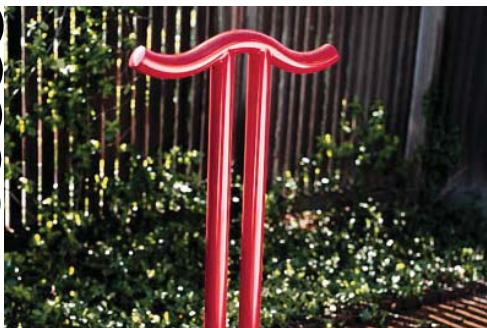
EMERSON BIKE RACK - GGNRA - \$270 ea.



CHARLIE TABLES & CHAIRS - \$2880 ea.



PLEXUS LITTER RECEPTACLES - \$733 ea.



PI BIKE RACK - \$235 ea.



PETOFSKY TABLE & CHAIRS - \$2400 ea.



RECYCLE RACKS

- 96% Recycled Content
- High Security
- Functional, Organic Forms

Take green to the next level with the Dero Recycle Racks. Combining basic materials with innovative design, Dero has created a completely unique bike rack. The Dero Recycle Racks are made of 96% recycled content and are available in environmentally-friendly, powder coated finishes. The Dero Recycle Racks' Tree and Circles forms attract the eye and provide great support for bicycles. The high security, solid steel frame is u-lock compatible.





11/07/2012

