

SHEET INDEX

No.	ID	DESCRIPTION
1	CV-01	TITLE SHEET
2a	G-01a	GENERAL NOTES
2b	G-01b	GENERAL NOTES
3	G-02	LEGEND AND ABBREVIATIONS
4	Y-01	TYPICAL SECTIONS
5	X-02	TYPICAL SECTIONS
6	K-01	BASIS OF BEARINGS, KEY MAP, AND LINE INDEX
7	LC-01	CVIL LAYOUT AND IMPROVEMENT PLAN AND PROFILE - Sheet 1
8	LC-02	CVIL LAYOUT AND IMPROVEMENT PLAN AND PROFILE - Sheet 2
9	LC-03	CVIL LAYOUT AND IMPROVEMENT PLAN AND PROFILE - Sheet 3
10	LC-04	CVIL LAYOUT AND IMPROVEMENT PLAN AND PROFILE - Sheet 4
11	LC-05	CVIL LAYOUT AND IMPROVEMENT PLAN AND PROFILE - Sheet 5
12	CD-01	CONSTRUCTION DETAILS - Removal Plan - Sheet 1
13	CD-02	CONSTRUCTION DETAILS - Removal Plan - Sheet 2
14	CD-03	CONSTRUCTION DETAILS - Removal Plan - Sheet 3
15	CD-04	CONSTRUCTION DETAILS - Removal Plan - Sheet 4
16	CD-05	CONSTRUCTION DETAILS - Removal Plan - Sheet 5
17	CD-06	CONSTRUCTION DETAILS - Buchanan Frontage Closure - Sheet 1
18	CD-07	CONSTRUCTION DETAILS - Buchanan Frontage Closure - Sheet 2
19	CD-08	CONSTRUCTION DETAILS - Buchanan Frontage Closure - Sheet 3
20	CD-09	CONSTRUCTION DETAILS - Buchanan Frontage Closure - Sheet 4
21	CD-10	CONSTRUCTION DETAILS - Buchanan St Pierce St Intersection
22	CD-11	CONSTRUCTION DETAILS - Redigned US94 Driveway
23	CD-12	CONSTRUCTION DETAILS - USDA and Ocean View Park Driveway
24	CD-13	CONSTRUCTION DETAILS - Curb Bulk-Outs
25	CD-14	CONSTRUCTION DETAILS - Median Islands - Sheet 1
26	CD-15	CONSTRUCTION DETAILS - Median Islands - Sheet 2
27	CD-16	CONSTRUCTION DETAILS - San Pablo Ave Improvements
28	CD-17	CONSTRUCTION DETAILS - Fence Details
29	U-01	UTILITY PLAN - Sheet 1
30	U-02	UTILITY PLAN - Sheet 2
31	U-03	UTILITY PLAN - Sheet 3
32	U-04	UTILITY PLAN - Sheet 4
33	U-05	UTILITY PLAN - Sheet 5
34	U-06	UTILITY DETAILS
35	U-07	UTILITY DETAILS
36	SC-01	STAGE CONSTRUCTION AND TRAFFIC HANDLING - Stage 1
37	SC-02	STAGE CONSTRUCTION AND TRAFFIC HANDLING - Stage 2
38	SC-03	STAGE CONSTRUCTION AND TRAFFIC HANDLING - Stage 3
39	SC-04	STAGE CONSTRUCTION AND TRAFFIC HANDLING - Stage 4
40	SC-05	STAGE CONSTRUCTION AND TRAFFIC HANDLING - Stage 5
41	PD-01	PAVEMENT DELINEATION AND SIGN PLAN - Sheet 1
42	PD-02	PAVEMENT DELINEATION AND SIGN PLAN - Sheet 2
43	PD-03	PAVEMENT DELINEATION AND SIGN PLAN - Sheet 3
44	PD-04	PAVEMENT DELINEATION AND SIGN PLAN - Sheet 4
45	PD-05	PAVEMENT DELINEATION AND SIGN PLAN - Sheet 5
46	PD-06	PAVEMENT DELINEATION AND SIGN DETAILS - Sheet 1
47	PD-07	PAVEMENT DELINEATION AND SIGN DETAILS - Sheet 2
48	PP-01	PLANTING PLAN - Sheet 1
49	PP-02	PLANTING PLAN - Sheet 2
50	PP-03	PLANTING PLAN - Sheet 3
51	PP-04	PLANTING PLAN - Sheet 4
52	PP-05	PLANTING PLAN - Sheet 5
53	PP-06	PLANTING DETAILS
54	PP-07	PLANTING DETAILS
55	IP-00a	IRRIGATION NOTES AND LEGEND
56	IP-00b	IRRIGATION LEGEND
57	IP-01	IRRIGATION PLAN - Sheet 1
58	IP-02	IRRIGATION PLAN - Sheet 2
59	IP-03	IRRIGATION PLAN - Sheet 3
60	IP-04	IRRIGATION PLAN - Sheet 4
61	IP-05	IRRIGATION PLAN - Sheet 5
62	IP-06	IRRIGATION DETAILS - Sheet 1
63	IP-07	IRRIGATION DETAILS - Sheet 2
64	IP-08	IRRIGATION DETAILS - Sheet 3
65	IP-09	IRRIGATION DETAILS - Sheet 4
66	IP-10	IRRIGATION DETAILS - Sheet 5
67	IP-11	IRRIGATION DETAILS - Sheet 6
68	E-01	ELECTRICAL PLAN - Sheet 1
69	E-02	ELECTRICAL PLAN - Sheet 2
70	E-03	ELECTRICAL PLAN - Sheet 3
71	E-04	ELECTRICAL PLAN - Sheet 4
72	E-05	ELECTRICAL PLAN - Sheet 5
73	E-06	TRAFFIC SIGNAL PLAN - Buchanan/Pierce Intersection
74	E-07	TRAFFIC SIGNAL SCHEDULES - Buchanan/Pierce Intersection
75	E-08	TRAFFIC SIGNAL PLAN - Marin/San Pablo Ave Intersection - Removal Plan
76	E-09	TRAFFIC SIGNAL PLAN - Marin/San Pablo Intersection
77	E-10	TRAFFIC SIGNAL SCHEDULES - Marin/San Pablo Intersection
78	E-11	ELECTRICAL DETAILS

City of Albany

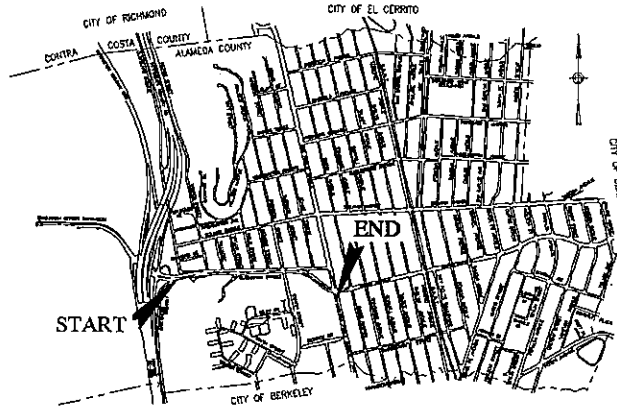
ALAMEDA COUNTY, CALIFORNIA
PLANS
 FOR THE CONSTRUCTION OF
BUCHANAN/MARIN BIKEWAY
PIERCE ST. TO SAN PABLO AVE.

CITY OF ALBANY CONTRACT NO. C12-2
 FEDERAL PROJECT NO. CML 5178(012)
 FEDERAL TRANSPORTATION IMPROVEMENT PROGRAM (FTIP) ID NO. ALA110030

CITY COUNCIL

Farid Javandel, Mayor
 Marge Atkinson, Vice Mayor
 Robert Lieber, Councilmember
 Peggy Thomsen, Councilmember
 Joanne Wile, Councilmember

Beth Pollard, City Manager
 Jeff Bond, Community Development Director
 Richard Cunningham, Public Works Manager



VICINITY MAP
 NOT TO SCALE

APPROVED:

 RICHARD CUNNINGHAM
 PUBLIC WORKS MANAGER
 DATE: JUN 6, 2012

APPLICABLE STANDARD PLANS

CITY OF ALBANY STANDARD PLANS WITH SPECIAL PROVISIONS:

- ST-1 Vertical Curb and Gutter
- ST-2 Residential Sidewalk/Driveway (Separated)
- ST-3 Sidewalk (Monolithic)
- ST-4 Curb and Sidewalk Joints
- ST-5 Curb, Gutter, and Sidewalk Repairs
- ST-6 Residential Driveway Repairs
- ST-7 Legends & Notes - Sidewalks, Driveways and Curb & Gutter
- ST-8 Street Traffic Sign Mounting and Anchor Standard
- ST-8A Sign Anchor Detail

CONTRA COSTA COUNTY (STORM DRAIN)

- CD1 Median, Curb and AC Ditch Details
- CD11i Inlet Frame and Grate
- CD20i Type "A" Inlet
- CD22i Type "C" Inlet

CALTRANS STANDARD PLANS (MAY 2006 WITH REVISED AND NEW STANDARD PLANS):

- A20A Pavement Markers and Traffic Lines - Typical Details
- A20B Pavement Markers and Traffic Lines - Typical Details
- A20C Pavement Markers and Traffic Lines - Typical Details
- A20D Pavement Markers and Traffic Lines - Typical Details
- A21A Pavement Markings - Arrows
- A21B Pavement Markings - Arrows
- RSP A24C Pavement Markings - Symbols and Numerals
- A24D Pavement Markings - Words
- A24E Pavement Markings - Words and Crosswalks
- RSP A65 Chain Link Fence
- RSP A85A Chain Link Fence
- RSP A88A Curb Ramp Details
- RSP P1 Jointed Plain Concrete Pavement
- RSP P20 Concrete Pavement - Joint Details
- RSP P30 Jointed Plain Concrete Pavement - End Panel Pavement Transitions
- T11 Traffic Control System for Lane Closure on Multilane Conventional Highways
- NSP 165 Temporary Water Pollution Control Details (Temporary Fence Type ESA)
- 93-3 Retaining Wall Type 1A
- B11-53 Concrete Barrier Type 25
- RSP ES-1A Electrical Systems (Symbols and Abbreviations)
- RSP ES-1B Electrical Systems (Symbols and Abbreviations)
- RSP ES-1C Electrical Systems (Symbols and Abbreviations)
- ES-2A Electrical Systems (Service Equipment Type II Series)
- RSP ES-2B Electrical Systems (Service Equipment Notes Type III Series)
- RSP ES-2C Electrical Systems (Service Equipment)
- ES-3A Electrical Systems (Controller Cabinet Details)
- ES-3B Electrical Systems (Controller Cabinet Details)
- ES-3C Electrical Systems (Controller Cabinet Details)
- ES-4A Electrical Systems (Signal Heads and Mountings)
- ES-4B Electrical Systems (Signal Heads and Mountings)
- RSP ES-4C Electrical Systems (Signal Heads and Mountings)
- RSP ES-4D Electrical Systems (Signal Heads and Mountings)
- ES-4E Electrical Systems (Signal Faces and Mountings)
- RSP ES-5A Electrical Systems (Detectors)
- ES-5B Electrical Systems (Detectors)
- ES-5C Electrical Systems (Detectors)
- ES-5D Electrical Systems (Detectors)
- RSP ES-6A Electrical Systems (Lighting Standard Types 15 and 21)
- ES-7A Electrical Systems (Signal and Lighting Standard Push Button Posts and Type 1515 Standard)
- RSP ES-7B Electrical Systems (Signal and Lighting Standard Type 1 Standard and Equipment Numbering)
- RSP ES-7F Electrical Systems (Signal and Lighting Standard Case 4 Arm Loadings)
- ES-7M Electrical Systems (Signal and Lighting Standards - Details No. 1)
- ES-7N Electrical Systems (Signal and Lighting Standards - Details No. 2)
- ES-7O Electrical Systems (Internally Illuminated Street Name Sign)
- ES-7P Electrical Systems (Pedestrian Barricades)
- ES-8 Electrical Systems (Pull Box Details)
- ES-11 Electrical Systems (Foundation Installation)

STANDARD PLANS FOR PUBLIC WORKS CONSTRUCTION (THE GREEN BOOK)

- 515-3(2 of 3) Tree Staking
- 520-2 Tree Planting

VERTICAL DATUM

ELEVATIONS SHOWN HEREON ARE BASED UPON
 CITY OF ALBANY VERTICAL CONTROL POINT
 NUMBER 2017 (ELEV 25.626') LOCATED AT
 PROJECT "BU" LINE STATION 101+475.02 AND
 "HW" LINE STATION 110+54.11.

HORIZONTAL DATUM

ALL COORDINATES AND DISTANCES SHOWN
 HEREON ARE BASED ON NORTH AMERICAN DATUM
 1983, ZONE 10, (NAD83) 2002.00 EPOCH, AND
 ARE GIVEN IN U.S. SURVEY FEET. DISTANCES
 SHOWN HEREON ARE AT GROUND LEVEL.

USER: E:\PROJ\ALBANY\STAFF\GROFFER
 MODIFIED BY: GARY GROFFER
 FILE NAME: E:\PROJ\ALBANY\STAFF\GROFFER\CV-01.dwg
 DATE: 6/6/2012 12:31:03 PM

FINAL SUBMITTAL
NOT FOR CONSTRUCTION

REV	DATE	DESCRIPTION

DESIGNED BY: GR
 DRAWN BY: GR
 CHECKED BY: JV
 REVIEWED BY: JV
 DATE: JUNE 6, 2012

REGISTRATION:

AECOM
 2101 Webster Street, Suite 1000
 Oakland, CA 94612
 Tel: 510-622-5600
 Fax: 510-854-5220

CLIENT:
 REVIEWED FOR GENERAL CONFORMANCE
 WITH THE CITY OF ALBANY STANDARD
 SPECIFICATIONS AND ORDINANCES:

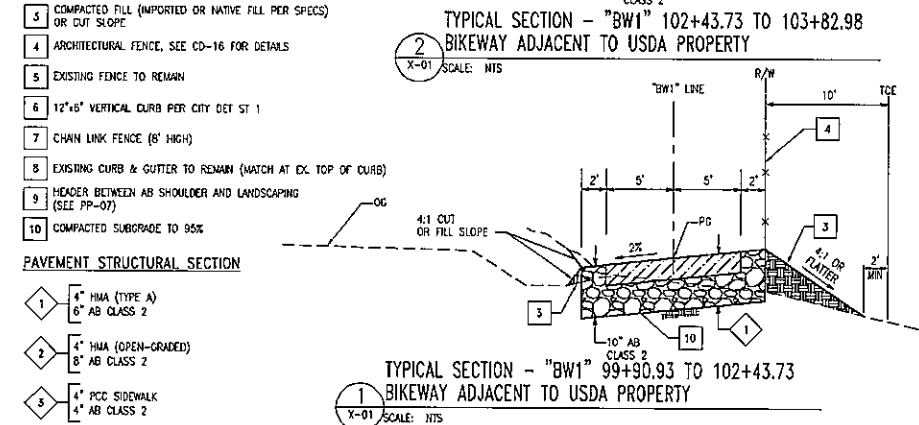
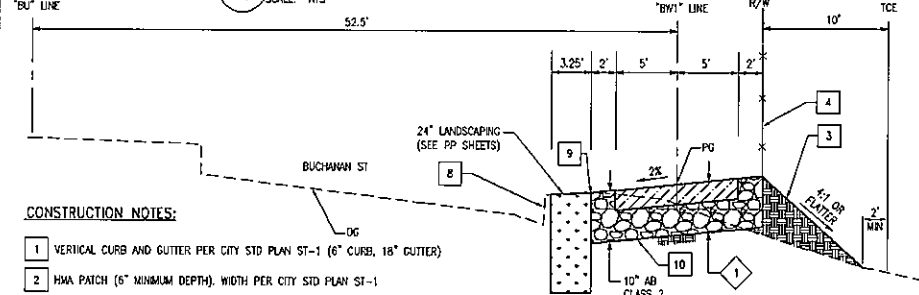
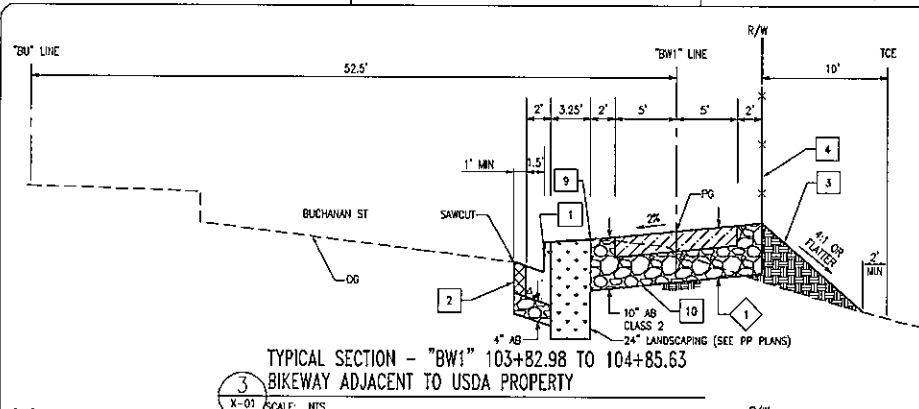
 RANDOLPH N. LEPTIEN
 LCC, INC., CIVIL ENGINEER
 DATE:

City of Albany
Buchanan/Marin Bikeway
Pierce St. to San Pablo Ave.
 Contract No. C12-2
 Federal Project No. CML 5178(012)
 Federal Transportation Improvement Project ID: ALA110030

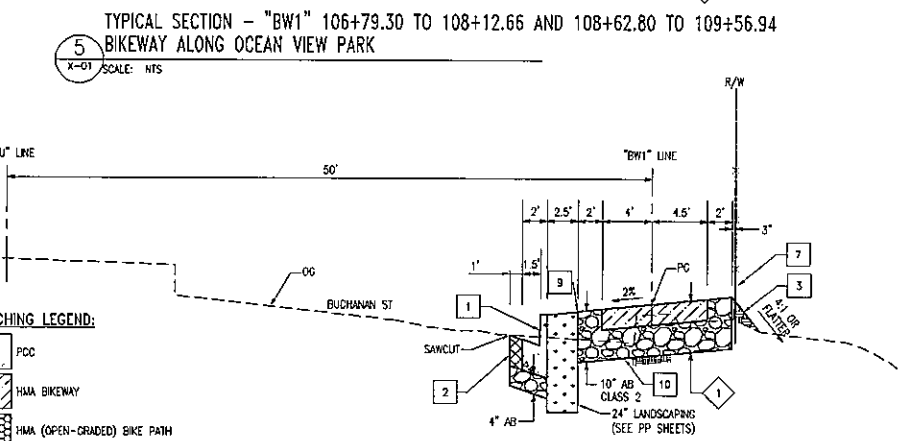
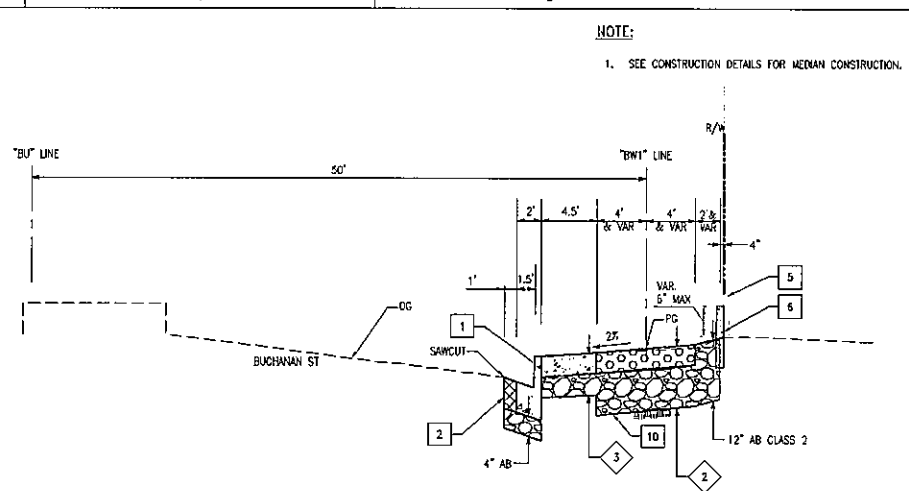
TITLE SHEET

SHEET: **CV-01** OF 19
 DWG No. 1 OF 78

SHEET: X-01 OF 78
 DATE: 6/12/2012 14:25:24
 FILE NAME: C:\Users\jwheeler\Documents\Projects\Albany\Bikeway\X-01\X-01.dwg
 USER: jwheeler
 PROJECT: Buchanan/Marin Bikeway
 DRAWING: X-01 TYPICAL SECTIONS
 DATE: 6/12/2012 14:25:24



- CONSTRUCTION NOTES:**
- 1 VERTICAL CURB AND GUTTER PER CITY STD PLAN ST-1 (6" CURB, 18" GUTTER)
 - 2 HMA PATCH (6" MINIMUM DEPTH), WIDTH PER CITY STD PLAN ST-1
 - 3 COMPACTED FILL (IMPORTED OR NATIVE FILL PER SPECS) OR CUT SLOPE
 - 4 ARCHITECTURAL FENCE, SEE CD-16 FOR DETAILS
 - 5 EXISTING FENCE TO REMAIN
 - 6 12"x6" VERTICAL CURB PER CITY DET ST 1
 - 7 CHAIN LINK FENCE (8' HIGH)
 - 8 EXISTING CURB & GUTTER TO REMAIN (MATCH AT EX. TOP OF CURB)
 - 9 HEADER BETWEEN AB SHOULDER AND LANDSCAPING (SEE PP-07)
 - 10 COMPACTED SUBGRADE TO 95%
- PAVEMENT STRUCTURAL SECTION**
- 1 4" HMA (TYPE A)
6" AB CLASS 2
 - 2 4" HMA (OPEN-GRADED)
8" AB CLASS 2
 - 3 4" PCC SIDEWALK
4" AB CLASS 2



- HATCHING LEGEND:**
- PCC
 - HMA BIKEWAY
 - HMA (OPEN-GRADED) BIKE PATH
 - HMA PATCH (6" MIN. DEPTH)
 - AB CLASS 2
 - LANDSCAPING (SEE PP SHEETS FOR DETAILS)
 - IMPORTED OR NATIVE FILL (PER SPECS)

NOTE:
1. SEE CONSTRUCTION DETAILS FOR MEAN CONSTRUCTION.

**FINAL SUBMITTAL
NOT FOR CONSTRUCTION**

DESIGNED BY:	GR
DRAWN BY:	GR
CHECKED BY:	JV
REVIEWED BY:	JV
DATE:	JUNE 6, 2012

REDESIGNER:

AECOM
 2101 Webster Street, Suite 1900
 Oakland, CA 94612
 Tel: 510-552-1600
 Fax: 510-834-3220

CLIENT:

REVIEWED FOR GENERAL CONFORMANCE WITH THE CITY OF ALBANY STANDARD SPECIFICATIONS AND ORDINANCES.

RANDOLPH W. LEPTION
 LLC, INC., CITY ENGINEER
 DATE:

City of Albany
 Buchanan/Marin Bikeway
 Pierce St. to San Pablo Ave.
 City Contract No. C12-2
 Federal Project No. CML 5178(012)
 Federal Transportation Improvement Project ID: ALA110030

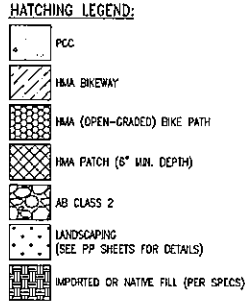
TYPICAL SECTIONS

SHEET: X-01 OF 78
 DWG No. 4 OF 78

DATE PLOTTED: 06/06/2012 10:54 AM
 PLOT SCALE: 1" = 10'-0"
 PLOT SHEET: 5 OF 78
 PLOT TITLE: BUCHANAN/MARIN BIKEWAY
 PLOT NUMBER: X-02
 PLOT DATE: 06/06/2012 10:54 AM
 PLOT USER: JEFFREY
 PLOT DEVICE: HPGL
 PLOT STATUS: OK
 PLOT MESSAGE:

CONSTRUCTION NOTES:

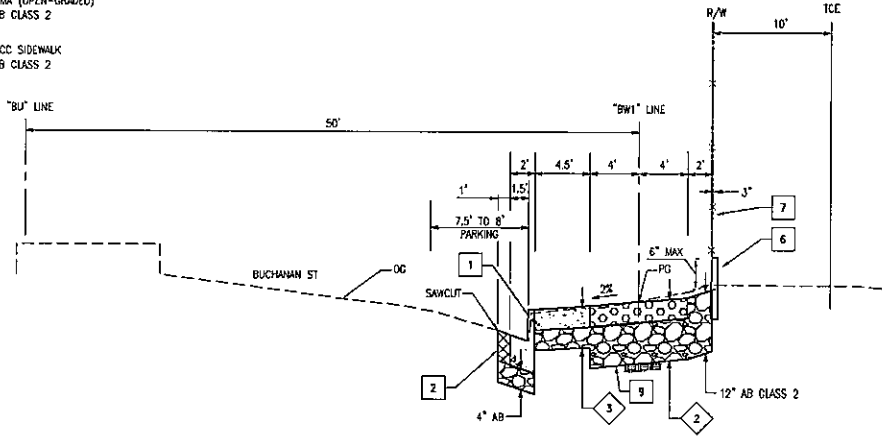
- 1 18" VERTICAL CURB AND GUTTER PER CITY STD PLAN ST 1
- 2 HMA PATCH (6" MINIMUM DEPTH)
- 3 COMPACTED FILL (IMPORTED OR NATIVE FILL PER SPECS) OR CUT SLOPE
- 5 EXISTING FENCE TO REMAIN
- 6 12"x6" VERTICAL CURB PER CITY STD DET ST 1
- 7 CHAIN LINK FENCE (8' HIGH)
- 8 HEADER BETWEEN AB SHOULDER AND LANDSCAPING (SEE PP-07)
- 9 COMPACTED SUBGRADE TO 95%
- 10 REMOVE EXISTING FENCE.



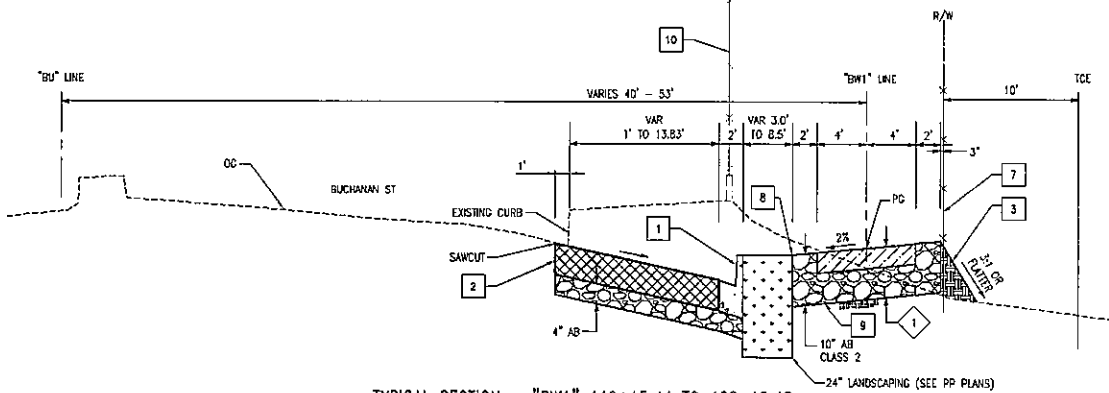
NOTE:
 1. SEE CONSTRUCTION DETAILS FOR MEDIAN CONSTRUCTION.

PAVEMENT STRUCTURAL SECTION

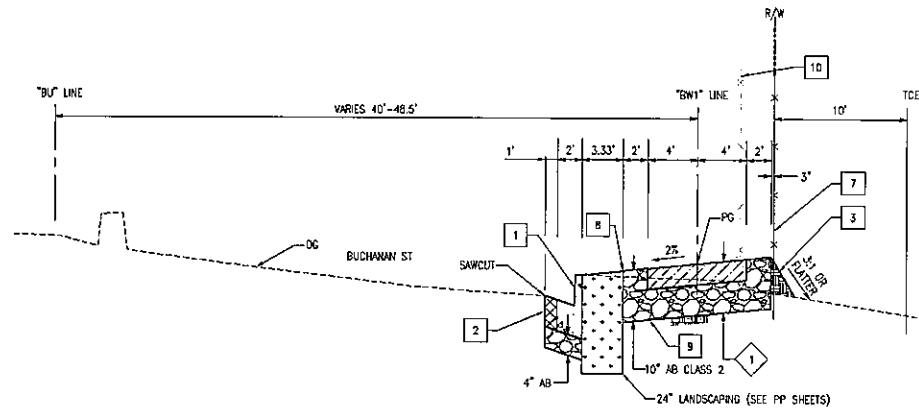
- 1 4" HMA (TYPE A)
6" AB CLASS 2
- 2 4" HMA (OPEN-GRADED)
8" AB CLASS 2
- 3 4" PCC SIDEWALK
4" AB CLASS 2



6
X-02 SCALE: NTS
 TYPICAL SECTION - "BW1" 109+56.94 TO 111+89.93
 BIKEWAY ALONG OCEAN VIEW SCHOOL



8
X-02 SCALE: NTS
 TYPICAL SECTION - "BW1" 119+15.44 TO 122+12.48
 BIKEWAY ALONG MARIN AVENUE TO SAN PABLO AVE



7
X-02 SCALE: NTS
 TYPICAL SECTION - "BW1" 113+51.72 TO 119+15.44
 BIKEWAY ALONG MARIN AVENUE FROM JACKSON ST

**FINAL SUBMITTAL
 NOT FOR CONSTRUCTION**

DESIGNED BY:	GR
DRAWN BY:	GR
CHECKED BY:	JV
REVIEWED BY:	JV
DATE:	JUNE 6, 2012

REGISTRATION:
AECOM
 2101 Webster Street, Suite 1000
 Oakland, CA 94612
 Tel: 510-625-5200
 Fax: 510-854-5220

CLIENT:
 REVIEWED FOR GENERAL CONFORMANCE WITH THE CITY OF ALBANY STANDARD SPECIFICATIONS AND ORDINANCES.

 RANDOLPH W. LEPTIEN
 LOC. INC., CITY ENGINEER
 DATE:

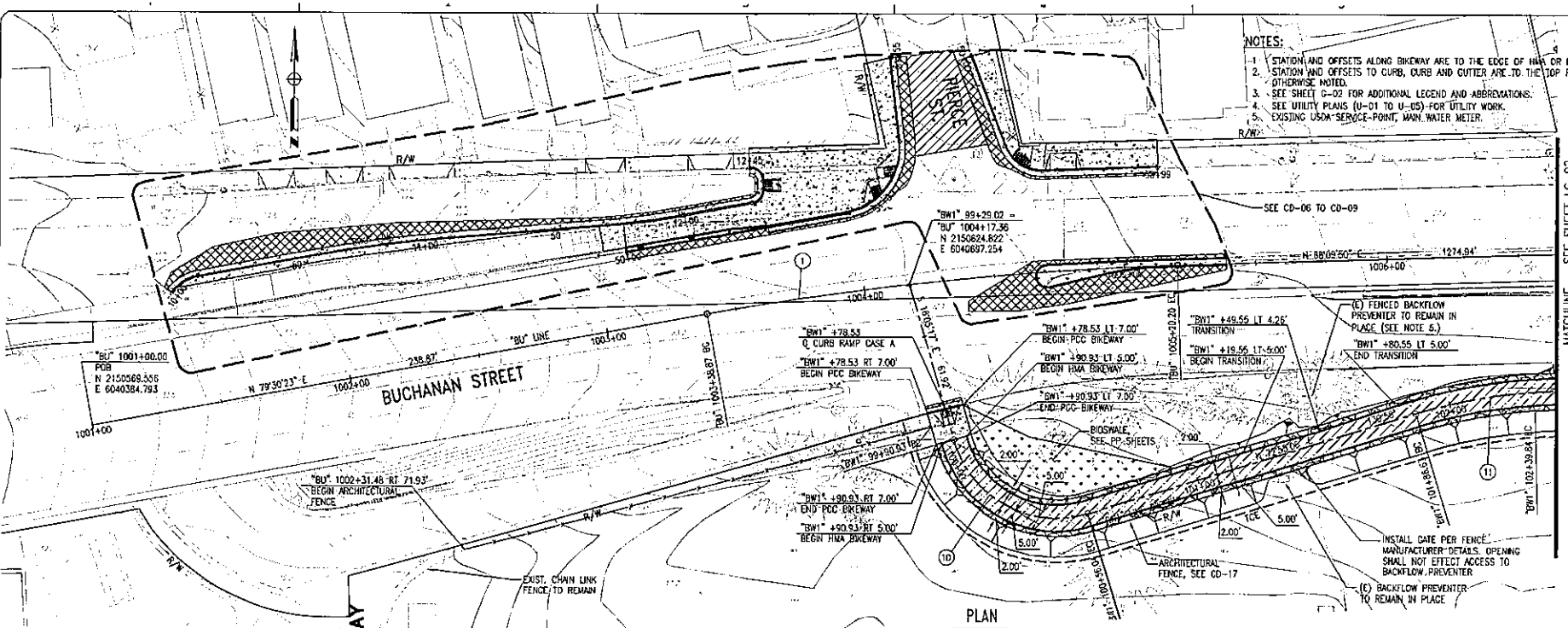
City of Albany
**Buchanan/Marin Bikeway
 Pierce St. to San Pablo Ave.**
 City Contract No. C12-2
 Federal Project No. CUL 5178(012)
 Federal Transportation Improvement Project ID: ALA110030

TYPICAL SECTIONS

SHEET:	X-02	DWG No:	5	OF	78
--------	------	---------	---	----	----

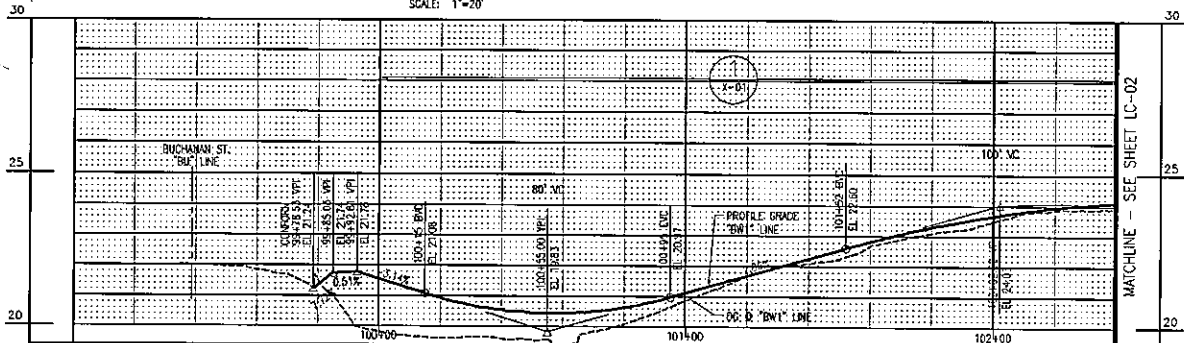
USDA DRIVEWAY
 BUCHANAN STREET
 PLAN
 SCALE: 1"=20'
 PROFILE - BIKEWAY ("BW1" LINE)
 SCALE: HORIZ 1"=20'
 VERT 1"=2'

- NOTES:**
1. STATION AND OFFSETS ALONG BIKEWAY ARE TO THE EDGE OF HMA OR PCC PAVEMENT
 2. STATION AND OFFSETS TO CURB, CURB AND GUTTER ARE TO THE TOP FACE OF CURB UNLESS OTHERWISE NOTED.
 3. SEE SHEET C-02 FOR ADDITIONAL LEGEND AND ABBREVIATIONS.
 4. SEE UTILITY PLANS (U-01 TO U-05) FOR UTILITY WORK.
 5. EXISTING USDA SERVICE-POINT, MAIN WATER METER.



CURVE DATA				
NO.	RADIUS	DELTA	LENGTH	TANGENT
①	1,200.00'	8°39'27"	181.32'	90.84'
⑩	41.00'	90°58'35"	85.11'	41.72'
⑪	200.00'	15°14'43"	53.22'	26.77'

- LEGEND:**
- PCC
 - HMA BIKEWAY (SEE X SHEETS FOR DEPTH)
 - HMA PATCH (6" MIN. DEPTH)
 - AB CLASS 2
 - LANDSCAPING (SEE PP SHEETS FOR DETAILS)
 - CURB RAMP TACTILE DOME PANEL



**FINAL SUBMITTAL
NOT FOR CONSTRUCTION**

DESIGNED BY: CR
 DRAWN BY: CR
 CHECKED BY: JV
 REVIEWED BY: JV
 DATE: JUNE 8, 2012

REGISTRATION

AECOM
 2101 Webster Street, Suite 1000
 Oakland, CA 94612
 Tel: 510-662-1600
 Fax: 510-662-0220

REVIEWED FOR GENERAL CONFORMANCE WITH THE CITY OF ALBANY STANDARD SPECIFICATIONS AND ORDINANCES

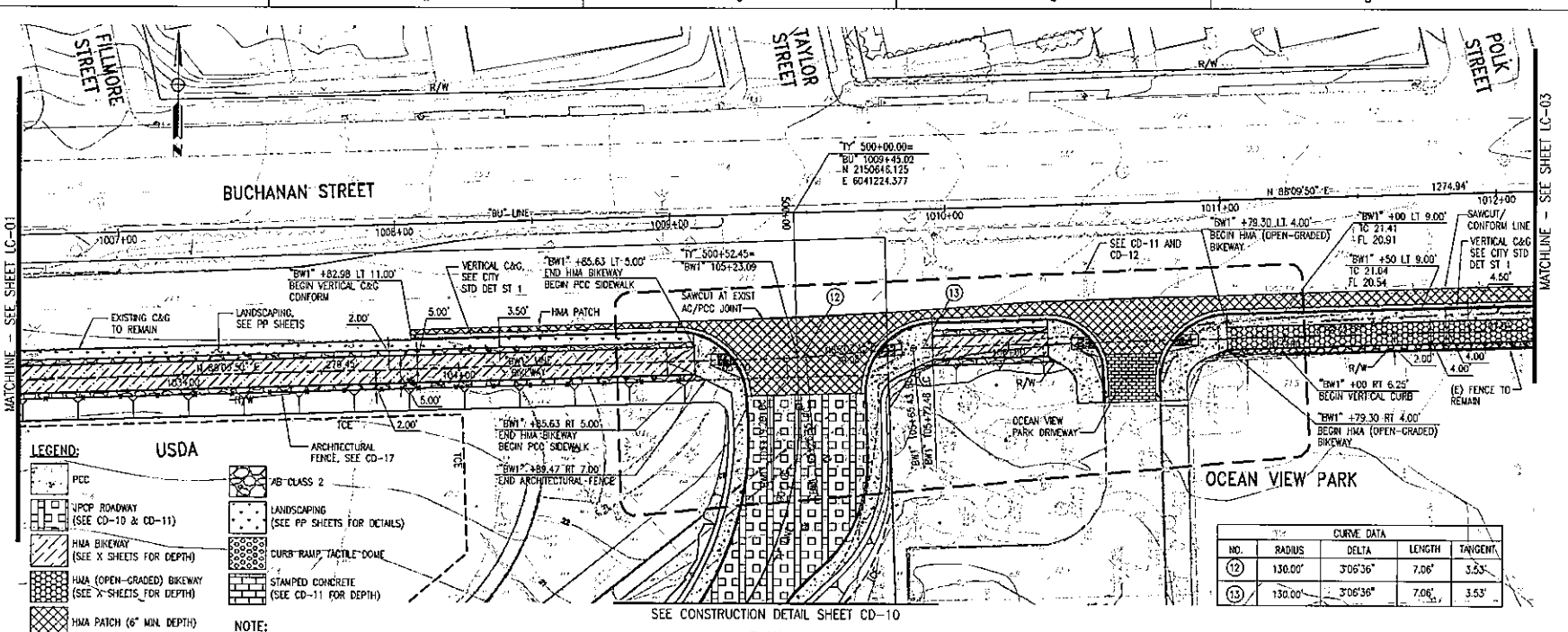
RANDOLPH W. LEFFLER
 L.L.C., INC., CIVIL ENGINEER
 DATE:

City of Albany
 Buchanan/Marin Bikeway
 Pierce St. to San Pablo Ave.
 City Contract No. C12-2
 Federal Project No. CWL 5178(012)
 Federal Transportation Improvement Project ID: ALA110030

LAYOUT AND CIVIL IMPROVEMENT
 PLAN AND PROFILE
 Sheet 1

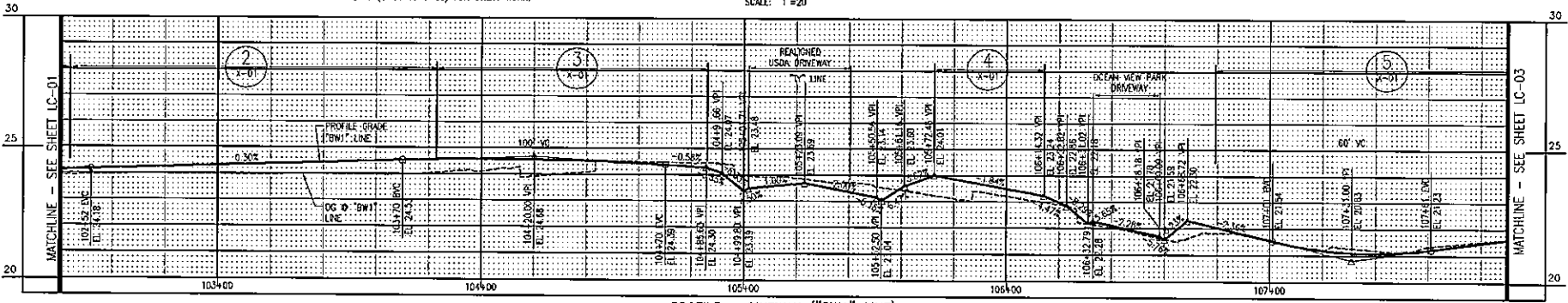
SHEET: **LC-01** DWG NO. 7 OF 78

PROJECT: 6017810-02B
 DRAWN BY: J.V.
 CHECKED BY: J.V.
 DATE: 6/8/2012 10:51:44 AM
 FILE NAME: C:\projects\6017810-02B\6017810-02B.dwg
 PLOT DATE: 6/8/2012 10:51:44 AM
 PLOT SCALE: 1/8"=1'-0"
 PLOT SHEET: 8 OF 78
 PLOT TITLE: BUCHANAN/MARIN BIKEWAY LAYOUT AND CIVIL IMPROVEMENT PLAN AND PROFILE SHEET 2



PLAN

SCALE: 1"=20'



**FINAL SUBMITTAL
NOT FOR CONSTRUCTION**

DESIGNED BY: GR
 DRAWN BY: GR
 CHECKED BY: J.V.
 REVIEWED BY: J.V.
 DATE: JUNE 8, 2012

REGISTRATION

AECOM
 2101 Webster Street, Suite 1000
 Oakland, CA 94612
 Tel: 510-592-4500
 Fax: 510-534-3220

CLIENT:

REVIEWED FOR GENERAL CONFORMANCE WITH THE CITY OF ALBANY STANDARD SPECIFICATIONS AND ORDINANCES

Randolph W. Leffner
 RANDOLPH W. LEFFNER
 LOC. INC., CITY ENGINEER
 DATE:

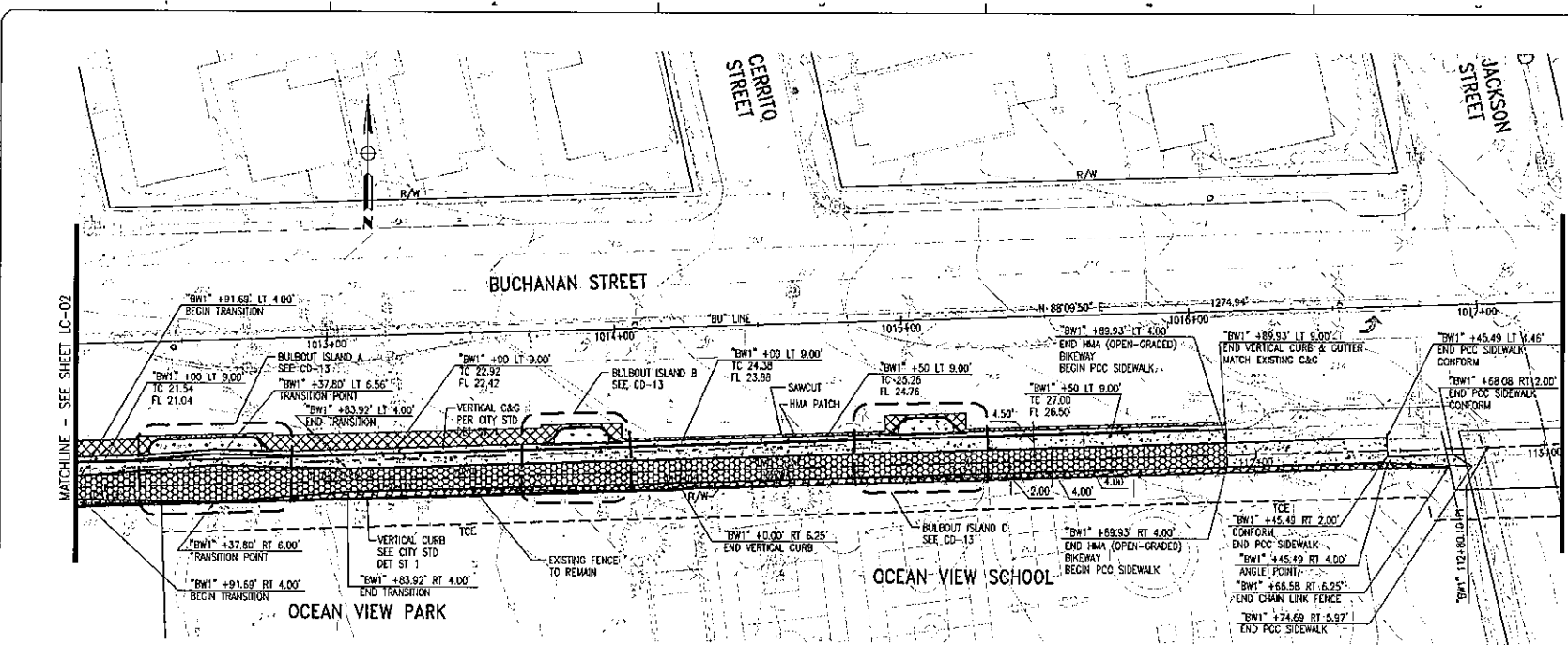
City of Albany

Buchanan/Marin Bikeway
 Pierce St. to San Pablo Ave.
 City Contract No. C12-2
 Federal Project No. CML 5178(012)
 Federal Transportation Improvement Project ID: ALA110030

LAYOUT AND CIVIL IMPROVEMENT
 PLAN AND PROFILE
 Sheet 2

SHEET: **LC-02** DWG No. 8 OF 78

DATE: 06/05/2012, 09:57 AM, USER: J. WILSON, PROJECT: BUCHANAN ST. TO SAN PABLO AVE. BIKEWAY IMPROVEMENT, SHEET: LC-03, TITLE: LAYOUT AND CIVIL IMPROVEMENT PLAN AND PROFILE, SCALE: 1"=20', DRAWN BY: GR, CHECKED BY: JN, REVIEWED BY: JN, DATE: 06/05/2012, 09:57 AM, PROJECT: BUCHANAN ST. TO SAN PABLO AVE. BIKEWAY IMPROVEMENT, SHEET: LC-03, TITLE: LAYOUT AND CIVIL IMPROVEMENT PLAN AND PROFILE, SCALE: 1"=20', DRAWN BY: GR, CHECKED BY: JN, REVIEWED BY: JN, DATE: 06/05/2012, 09:57 AM

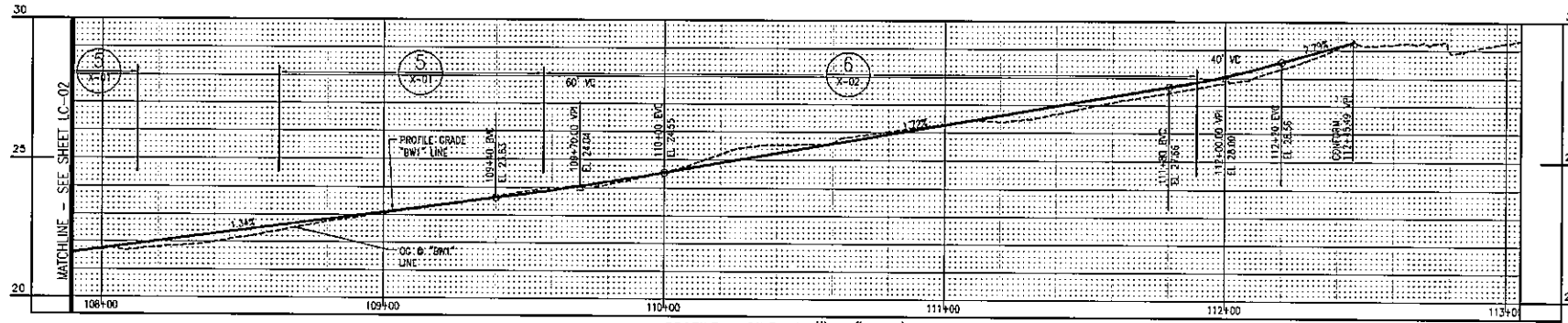


- LEGEND:**
- PCC
 - HMA (OPEN-GRADED) BIKEWAY (SEE X SHEETS FOR DEPTH)
 - HMA PATCH (6" MIN DEPTH)
 - AB CLASS 2
 - LANDSCAPING (SEE PP SHEETS FOR DETAILS)

NOTE:

1 SEE UTILITY PLANS (U-1 TO U-5) FOR UTILITY WORK.

PLAN
SCALE: 1"=20'



PROFILE - BIKEWAY ("BW1" LINE)
SCALE: HORIZ 1"=20'
VERT 1"=2'

FINAL SUBMITTAL
NOT FOR CONSTRUCTION

REV	DATE	DESCRIPTION

DESIGNED BY: GR
DRAWN BY: GR
CHECKED BY: JN
REVIEWED BY: JN
DATE: JUNE 6, 2012

REGISTERED PROFESSIONAL ENGINEER

AECOM
2101 Webster Street, Suite 1900
Oakland, CA 94612
Tel: 510-652-4600
Fax: 510-854-3220

CLIENT:

REVIEWED FOR GENERAL CONFORMANCE WITH THE CITY OF ALBANY STANDARD SPECIFICATIONS AND ORDINANCES

RANDOLPH W. LEFFLER
LCC, INC., CITY ENGINEER
DATE:

City of Albany

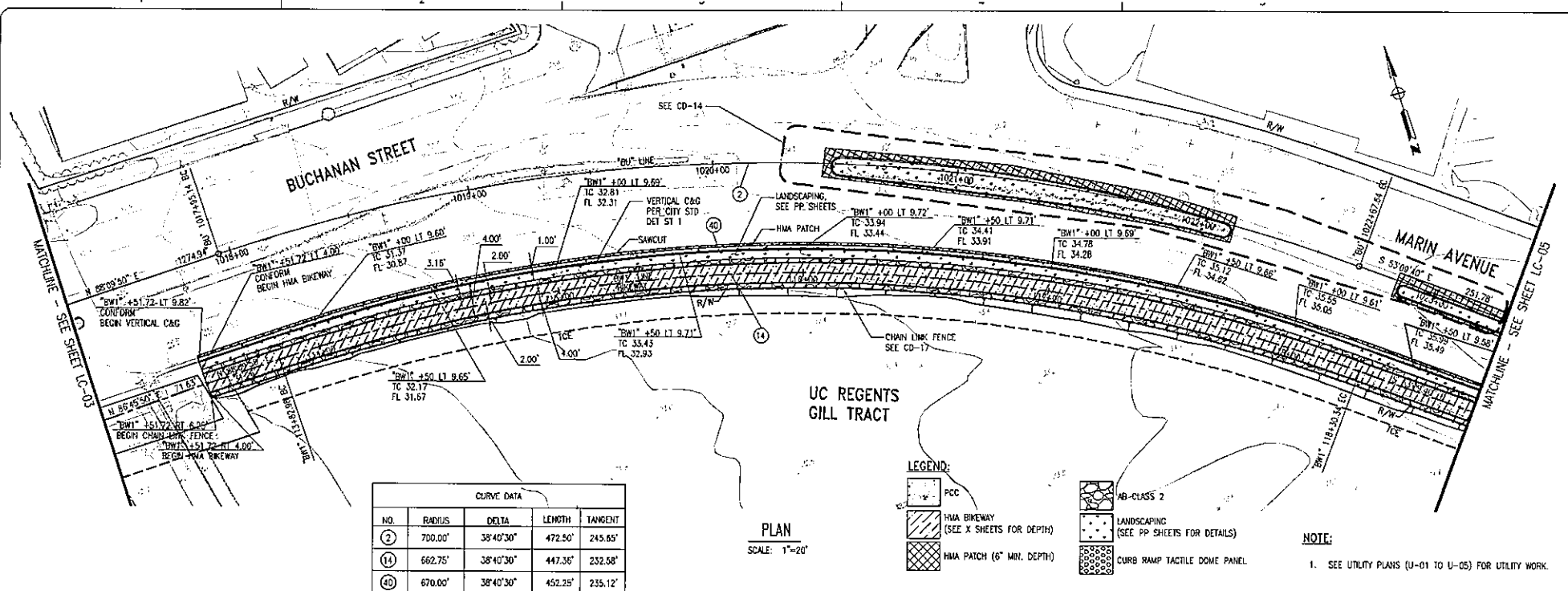
Buchanan/Marin Bikeway
Pierce St. to San Pablo Ave.

City Contract No. C12-2
Federal Project No. CWL 5178(012)
Federal Transportation Improvement Project ID: ALA110030

LAYOUT AND CIVIL IMPROVEMENT
PLAN AND PROFILE
Sheet 3

SHEET: **LC-03** DWG No. 9 of 78

PROJECT: 607010000
 DRAWN BY: JY
 CHECKED BY: JY
 REVIEWED BY: JY
 DATE: JUNE 8, 2012
 SHEET: LC-04 OF 10

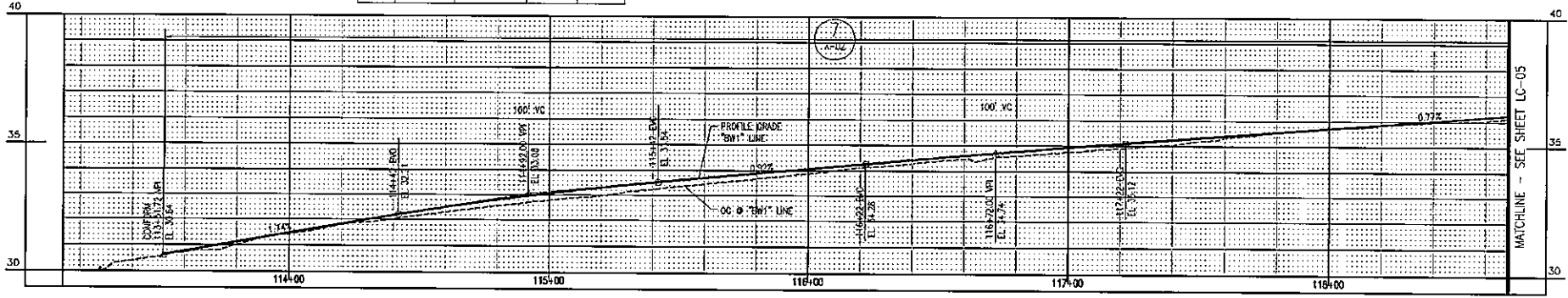


CURVE DATA				
NO.	RADIUS	DELTA	LENGTH	TANGENT
②	700.00'	38°40'30"	472.50'	245.65'
⑭	662.75'	38°40'30"	447.35'	232.58'
④①	670.00'	38°40'30"	452.25'	235.12'

LEGEND:

- PCC
- HMA BIKEWAY (SEE X SHEETS FOR DEPTH)
- HMA PATCH (6" MIN. DEPTH)
- HB-CLASS 2
- LANDSCAPING (SEE PP SHEETS FOR DETAILS)
- CURB RAMP TACTILE DOME PANEL

NOTE:
1. SEE UTILITY PLANS (U-01 TO U-05) FOR UTILITY WORK.



**FINAL SUBMITTAL
NOT FOR CONSTRUCTION**

REV	DATE	DESCRIPTION

DESIGNED BY: GR
DRAWN BY: GR
CHECKED BY: JY
REVIEWED BY: JY
DATE: JUNE 8, 2012

REGISTERED PROFESSIONAL ENGINEER

AECOM
 2101 Webster Street, Suite 1900
 Oakland, CA 94612
 Tel: 510-622-6500
 Fax: 510-424-5220

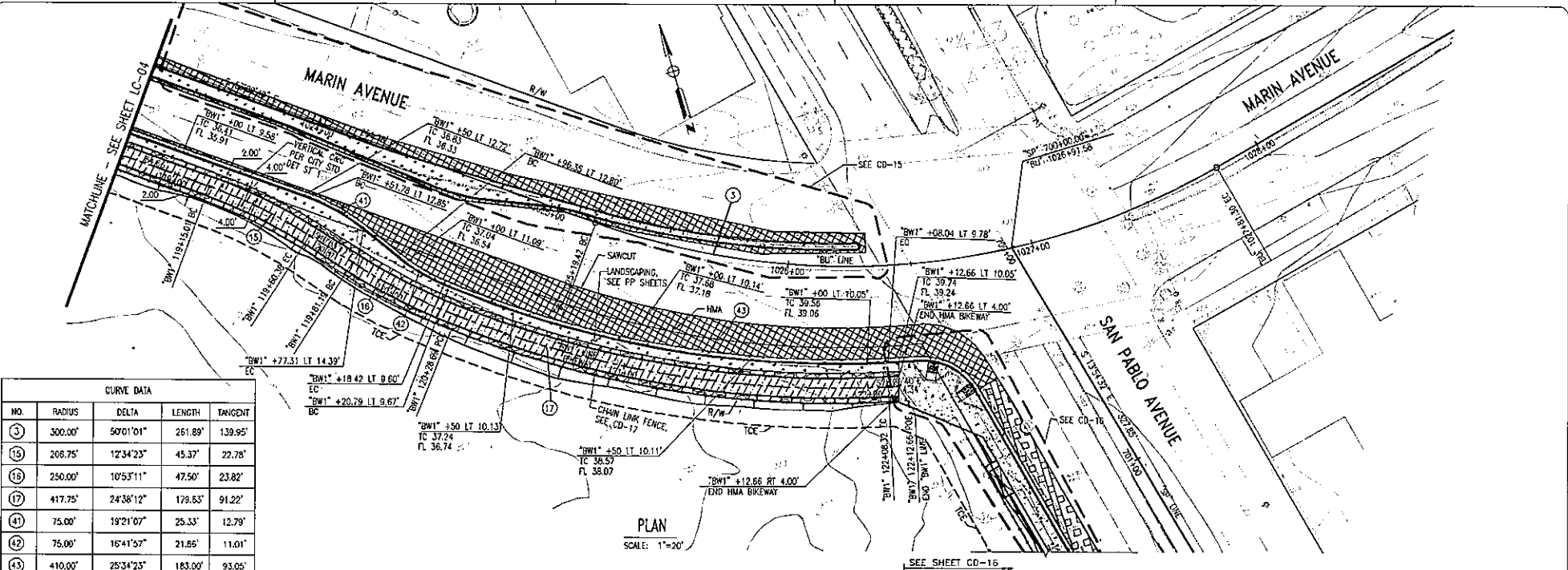
REVIEWED FOR GENERAL CONFORMANCE WITH THE CITY OF ALBANY STANDARD SPECIFICATIONS AND ORDINANCES.

 RANDOLPH W. LEFTEN
 LOC. INC., CIVIL ENGINEER
 DATE:

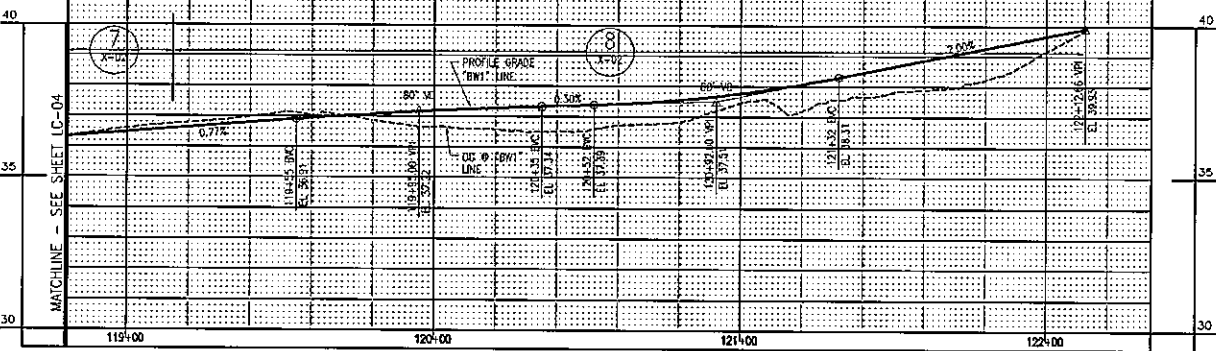
City of Albany
Buchanan/Marin Bikeway
 Pierce St. to San Pablo Ave.
 City Contract No. D12-2
 Federal Project No. CW-5174(012)
 Federal Transportation Improvement Project ID: ALA110030

LAYOUT AND CIVIL IMPROVEMENT
 PLAN AND PROFILE
 Sheet 4
 SHEET: LC-04 OF 10

DATE: 05/28/2013 10:56:41 AM
 FILE NAME: I:\PROJECTS\130517\130517.dwg
 USER: R. GRIFFIN
 PLOT SCALE: 1"=20'
 PLOT DATE: 05/28/2013 10:56:41 AM
 PLOT USER: R. GRIFFIN
 PLOT DEVICE: HPGL
 PLOT PENS: 1,2,3,4,5,6,7,8,9,10,11,12,13,14,15,16,17,18,19,20,21,22,23,24,25,26,27,28,29,30,31,32,33,34,35,36,37,38,39,40,41,42,43,44,45,46,47,48,49,50,51,52,53,54,55,56,57,58,59,60,61,62,63,64,65,66,67,68,69,70,71,72,73,74,75,76,77,78,79,80,81,82,83,84,85,86,87,88,89,90,91,92,93,94,95,96,97,98,99,100,101,102,103,104,105,106,107,108,109,110,111,112,113,114,115,116,117,118,119,120,121,122,123,124,125,126,127,128,129,130,131,132,133,134,135,136,137,138,139,140,141,142,143,144,145,146,147,148,149,150,151,152,153,154,155,156,157,158,159,160,161,162,163,164,165,166,167,168,169,170,171,172,173,174,175,176,177,178,179,180,181,182,183,184,185,186,187,188,189,190,191,192,193,194,195,196,197,198,199,200,201,202,203,204,205,206,207,208,209,210,211,212,213,214,215,216,217,218,219,220,221,222,223,224,225,226,227,228,229,230,231,232,233,234,235,236,237,238,239,240,241,242,243,244,245,246,247,248,249,250,251,252,253,254,255,256,257,258,259,260,261,262,263,264,265,266,267,268,269,270,271,272,273,274,275,276,277,278,279,280,281,282,283,284,285,286,287,288,289,290,291,292,293,294,295,296,297,298,299,300,301,302,303,304,305,306,307,308,309,310,311,312,313,314,315,316,317,318,319,320,321,322,323,324,325,326,327,328,329,330,331,332,333,334,335,336,337,338,339,340,341,342,343,344,345,346,347,348,349,350,351,352,353,354,355,356,357,358,359,360,361,362,363,364,365,366,367,368,369,370,371,372,373,374,375,376,377,378,379,380,381,382,383,384,385,386,387,388,389,390,391,392,393,394,395,396,397,398,399,400,401,402,403,404,405,406,407,408,409,410,411,412,413,414,415,416,417,418,419,420,421,422,423,424,425,426,427,428,429,430,431,432,433,434,435,436,437,438,439,440,441,442,443,444,445,446,447,448,449,450,451,452,453,454,455,456,457,458,459,460,461,462,463,464,465,466,467,468,469,470,471,472,473,474,475,476,477,478,479,480,481,482,483,484,485,486,487,488,489,490,491,492,493,494,495,496,497,498,499,500,501,502,503,504,505,506,507,508,509,510,511,512,513,514,515,516,517,518,519,520,521,522,523,524,525,526,527,528,529,530,531,532,533,534,535,536,537,538,539,540,541,542,543,544,545,546,547,548,549,550,551,552,553,554,555,556,557,558,559,560,561,562,563,564,565,566,567,568,569,570,571,572,573,574,575,576,577,578,579,580,581,582,583,584,585,586,587,588,589,590,591,592,593,594,595,596,597,598,599,600,601,602,603,604,605,606,607,608,609,610,611,612,613,614,615,616,617,618,619,620,621,622,623,624,625,626,627,628,629,630,631,632,633,634,635,636,637,638,639,640,641,642,643,644,645,646,647,648,649,650,651,652,653,654,655,656,657,658,659,660,661,662,663,664,665,666,667,668,669,670,671,672,673,674,675,676,677,678,679,680,681,682,683,684,685,686,687,688,689,690,691,692,693,694,695,696,697,698,699,700,701,702,703,704,705,706,707,708,709,710,711,712,713,714,715,716,717,718,719,720,721,722,723,724,725,726,727,728,729,730,731,732,733,734,735,736,737,738,739,740,741,742,743,744,745,746,747,748,749,750,751,752,753,754,755,756,757,758,759,760,761,762,763,764,765,766,767,768,769,770,771,772,773,774,775,776,777,778,779,780,781,782,783,784,785,786,787,788,789,790,791,792,793,794,795,796,797,798,799,800,801,802,803,804,805,806,807,808,809,810,811,812,813,814,815,816,817,818,819,820,821,822,823,824,825,826,827,828,829,830,831,832,833,834,835,836,837,838,839,840,841,842,843,844,845,846,847,848,849,850,851,852,853,854,855,856,857,858,859,860,861,862,863,864,865,866,867,868,869,870,871,872,873,874,875,876,877,878,879,880,881,882,883,884,885,886,887,888,889,890,891,892,893,894,895,896,897,898,899,900,901,902,903,904,905,906,907,908,909,910,911,912,913,914,915,916,917,918,919,920,921,922,923,924,925,926,927,928,929,930,931,932,933,934,935,936,937,938,939,940,941,942,943,944,945,946,947,948,949,950,951,952,953,954,955,956,957,958,959,960,961,962,963,964,965,966,967,968,969,970,971,972,973,974,975,976,977,978,979,980,981,982,983,984,985,986,987,988,989,990,991,992,993,994,995,996,997,998,999,1000



CURVE DATA				
NO.	RADIUS	DELTA	LENGTH	TANGENT
(5)	300.00'	50°01'01"	261.89'	139.95'
(16)	208.75'	12°34'23"	45.37'	22.78'
(18)	250.00'	10°53'11"	47.50'	23.82'
(17)	417.75'	24°38'12"	179.65'	91.22'
(41)	75.00'	19°21'07"	25.33'	12.79'
(42)	75.00'	16°41'57"	21.86'	11.01'
(43)	410.00'	25°34'23"	183.00'	93.05'



- LEGEND:**
- PCC
 - HMA BIKEWAY (SEE X SHEETS FOR DEPTH)
 - HMA PATCH (6" MIN. DEPTH)
 - AB CLASS 2
 - LANDSCAPING (SEE PP SHEETS FOR DETAILS)
 - CURB RAMP TRUNCATED DOME PANEL

NOTE:

- SEE UTILITY PLANS (U-01 TO U-05) FOR UTILITY WORK.

**FINAL SUBMITTAL
NOT FOR CONSTRUCTION**

DESIGNED BY: GR
 DRAWN BY: GR
 CHECKED BY: JW
 REVIEWED BY: JW
 DATE: JUNE 6, 2012

REGISTRATION: **AECOM**
 2101 Webster Street, Suite 1800
 Oakland, CA 94612
 Tel: 510-525-4600
 Fax: 510-834-5220

CLIENT: **CITY OF ALBANY**
 REVIEWED FOR GENERAL CONFORMANCE WITH THE CITY OF ALBANY STANDARD SPECIFICATIONS AND ORDINANCES.
 RANDOLPH W. LEFFLEY
 LCC, INC., CITY ENGINEER
 DATE: _____

City of Albany
Buchanan/Marin Bikeway
Pierce St. to San Pablo Ave.
 City Control No. C12-2
 Federal Project No. CUL 5178(012)
 Federal Transportation Improvement Project ID: ALA110030

LAYOUT AND CIVIL IMPROVEMENT
 PLAN AND PROFILE
 Sheet 5

SHEET: LC-05 OF 78
 DWG NO: 11 OF 78