

SITE NAME: API

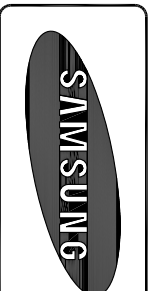
SITE NUMBER: FN03XC063

MARKET NAME: SF BAY NETWORK VISION MM LAUNCH

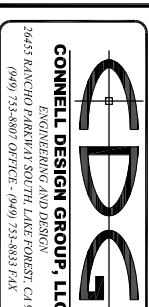
SITE ADDRESS: 520 CLEVELAND AVE. ALBANY, CA 94710

SITE TYPE: GROUND EQUIPMENT MONOPOLE

CROWN SITE: 877116



BLACK & VEATCH



PROJECT NO: FN03XC063

DRAWN BY: EN

CHECKED BY: DMC

| REV | DATE | DESCRIPTION |
|-----|------------|-------------------------|
| 2 | 06/29/2011 | ISSUED FOR 2D SUBMITTAL |
| 1 | 06/22/2011 | ISSUED FOR 2D SUBMITTAL |
| 0 | 06/03/2011 | ISSUED FOR 2D REVIEW |

IT IS A VIOLATION OF LAW FOR ANY PERSON, FIRM OR CORPORATION TO REPRODUCE OR ALTER THIS DOCUMENT WITHOUT THE WRITTEN PERMISSION OF A LICENSED PROFESSIONAL ENGINEER.

ENGINEER OF RECORD
DANIEL M. CONNELL
PE # 62543

SHEET TITLE
TITLE SHEET

SHEET NUMBER
T-1

SITE INFORMATION

SITE ADDRESS:
520 CLEVELAND AVE.
ALBANY, CA 94710
ALAMEDA COUNTY

APN:
066-2760-001-04

PROPERTY OWNER:
ADHESIVE PRODUCTS INC.
520 CLEVELAND AVE.
ALBANY, CA 94710

EQUIPMENT SUPPLIER:
SAMSUNG TELECOMMUNICATIONS AMERICA (STA)
1301 EAST LOOKOUT DRIVE
RICHARDSON, TX 75082-4124
(972) 761-7000

OWNER REPRESENTATIVE:
CORTEL, LLC
CONTACT: MASAHO HILL
E-MAIL: masaho.hill@cortel-llc.com

CONSULTANT:
BLACK & VEATCH CORPORATION
2999 OAK ROAD, SUITE 490
WALNUT CREEK, CA 94597
PHONE: (925) 949-5916

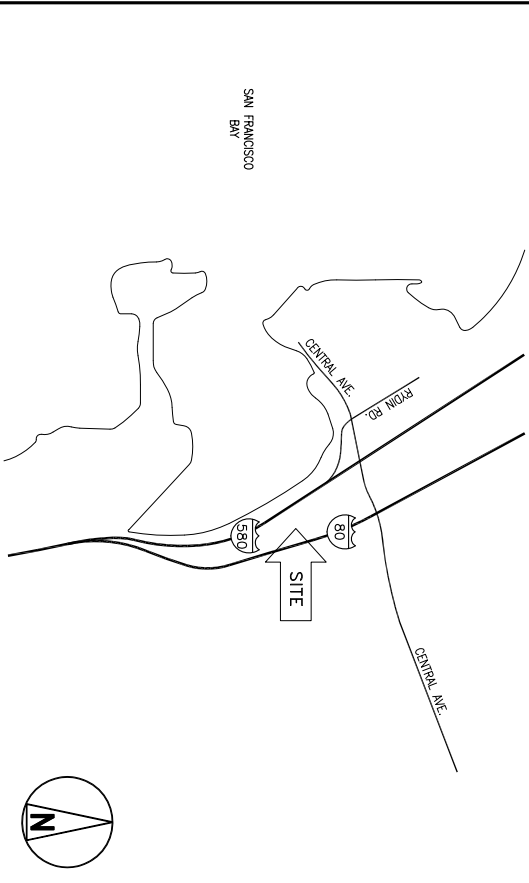
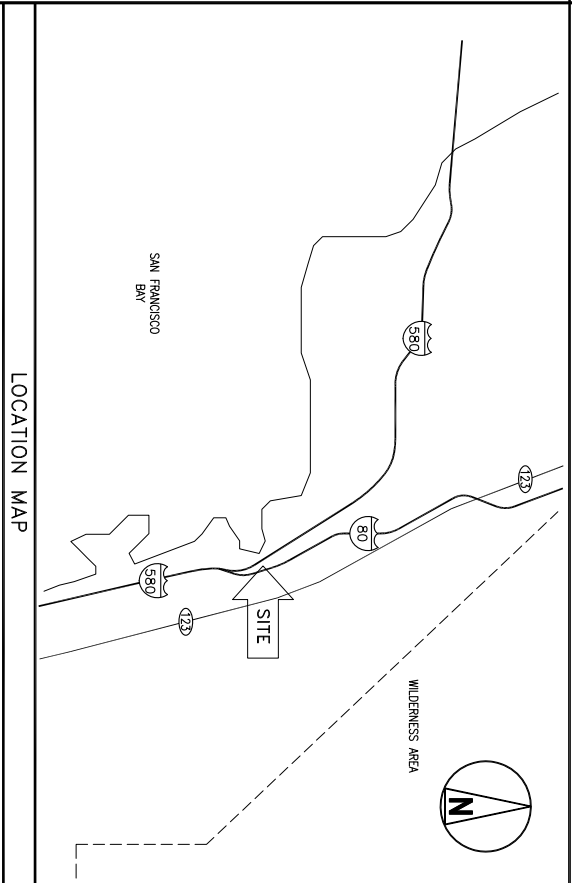
ZONING MANAGER:
CORTEL, LLC
CONTACT: JEROME MARCUS
E-MAIL: jerome.marcus@cortel-llc.com

TELCO COMPANY:
AT&T

POWER COMPANY:
PG&E

LATITUDE (NAD83):
37° 53' 46.700" N
-37.8963556° N

LONGITUDE (NAD83):
122° 18' 36.399" W
-122.3101111° W



APPLICABLE CODES

ALL WORK SHALL COMPLY WITH THE FOLLOWING APPLICABLE CODES:

- 2010 CALIFORNIA BUILDING CODE
- 2010 CALIFORNIA MECHANICAL CODE
- 2010 CALIFORNIA PLUMBING CODE
- 2010 CALIFORNIA ELECTRICAL CODE

IN THE EVENT OF CONFLICT, THE MOST RESTRICTIVE CODE SHALL PREVAIL.

DRAWING INDEX

| DRAWING INDEX | TITLE SHEET & PROJECT DATA |
|---------------|--------------------------------|
| T-1 | TITLE SHEET & PROJECT DATA |
| A-1 | SITE PLAN / ENLARGED SITE PLAN |
| A-2 | EQUIPMENT LAYOUTS |
| A-3 | ANTENNA LAYOUTS |
| A-4 | ELEVATIONS |
| A-5 | EQUIPMENT DETAILS |

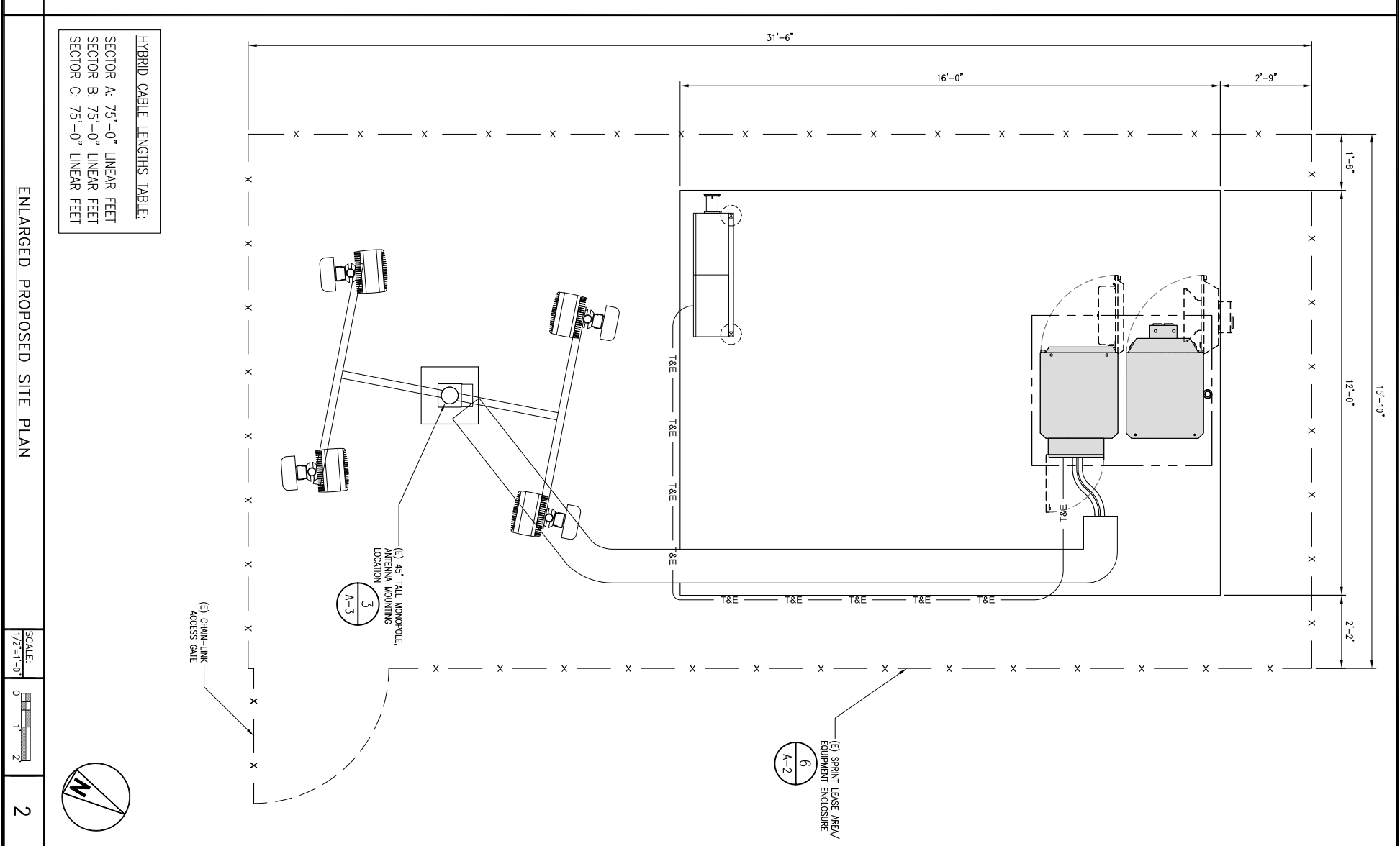
PROJECT DESCRIPTION

PERFORM SITE MODIFICATIONS TO AN EXISTING WIRELESS COMMUNICATIONS FACILITY, INCLUDING THE REPLACEMENT OF (2) PANEL ANTENNAS & THE INSTALLATION OF (2) NEW PANEL ANTENNAS, AND THE REPLACEMENT OF (3) EQUIPMENT CABINETS. ANTENNA COUNT PRE UPGRADE: (2)
ANTENNA COUNT POST UPGRADE: (4)
EQUIPMENT CABINET COUNT PRE UPGRADE: (3)
EQUIPMENT CABINET COUNT POST UPGRADE: (2)

DRIVING DIRECTIONS FROM NEAREST AIRPORT

FROM OAKLAND INTERNATIONAL AIRPORT, OAKLAND, CA:

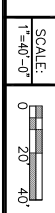
1. HEAD SOUTHEAST ON AIRPORT DR., SLIGHT LEFT TO STAY ONTO AIRPORT DR.
2. CONTINUE ONTO 98TH AVE.
3. MERGE ONTO I-880 N. VIA THE RAMP TO DOWNTOWN/OAKLAND.
4. MERGE ONTO I-80 E.
5. SLIGHT RIGHT ONTO I-580 W. (SIGNS FOR SAN RAFAEL/POINT RICHMOND)
6. TAKE EXIT 12 FOR CENTRAL AVE.
7. TURN RIGHT ONTO CENTRAL AVE.
8. TAKE THE 1ST RIGHT ONTO JACUZZI AVE.
9. CONTINUE ONTO CLEVELAND AVE., ARRIVE AT SITE LOCATION ON THE RIGHT HAND SIDE.



HYBRID CABLE LENGTHS TABLE:

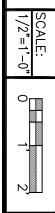
| | | |
|-----------|--------|-------------|
| SECTOR A: | 75'-0" | LINEAR FEET |
| SECTOR B: | 75'-0" | LINEAR FEET |
| SECTOR C: | 75'-0" | LINEAR FEET |

SITE PLAN



1

ENLARGED PROPOSED SITE PLAN



2

6580 SPRINT PARKWAY
OVERLAND PARK, KANSAS 66251

BLACK & VEATCH

CONNELL DESIGN GROUP, LLC
36455 RANCHO VISTA DRIVE, SUITE 100
OVERLAND PARK, KS 66210
(913) 558-8807 OFFICE • (913) 558-8833 FAX

PROJECT NO: FN03XC063
DRAWN BY: EN
CHECKED BY: DMC

| REV | DATE | DESCRIPTION |
|-----|------------|-------------------------|
| 2 | 08/29/2011 | ISSUED FOR 2D SUBMITTAL |
| 1 | 08/22/2011 | ISSUED FOR 2D SUBMITTAL |
| 0 | 08/03/2011 | ISSUED FOR 2D REVIEW |

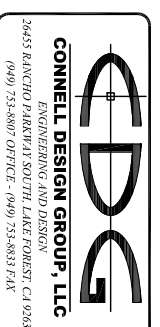
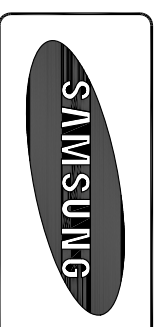
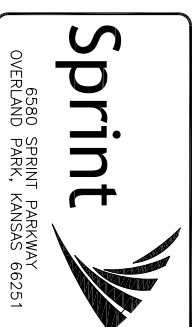
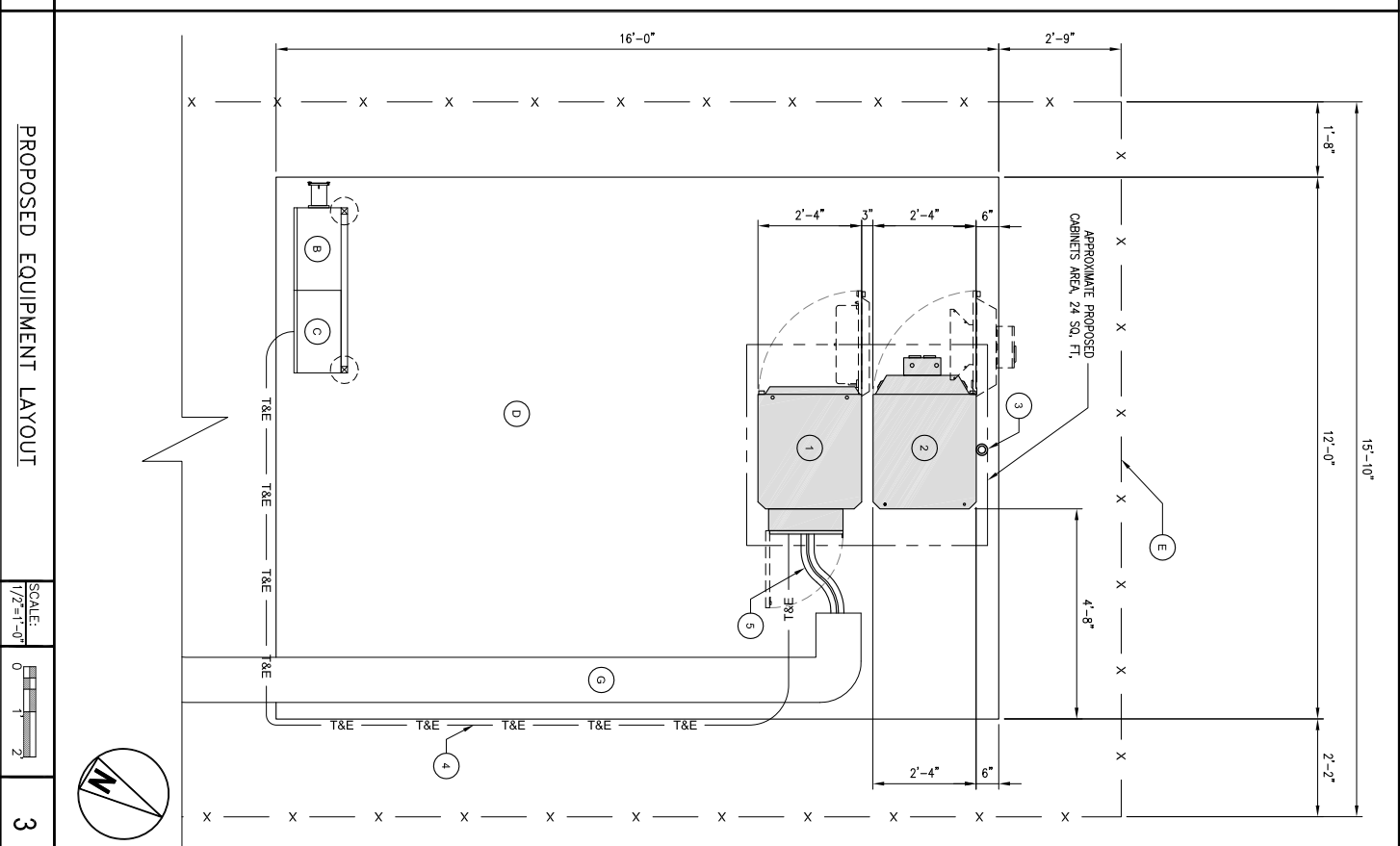
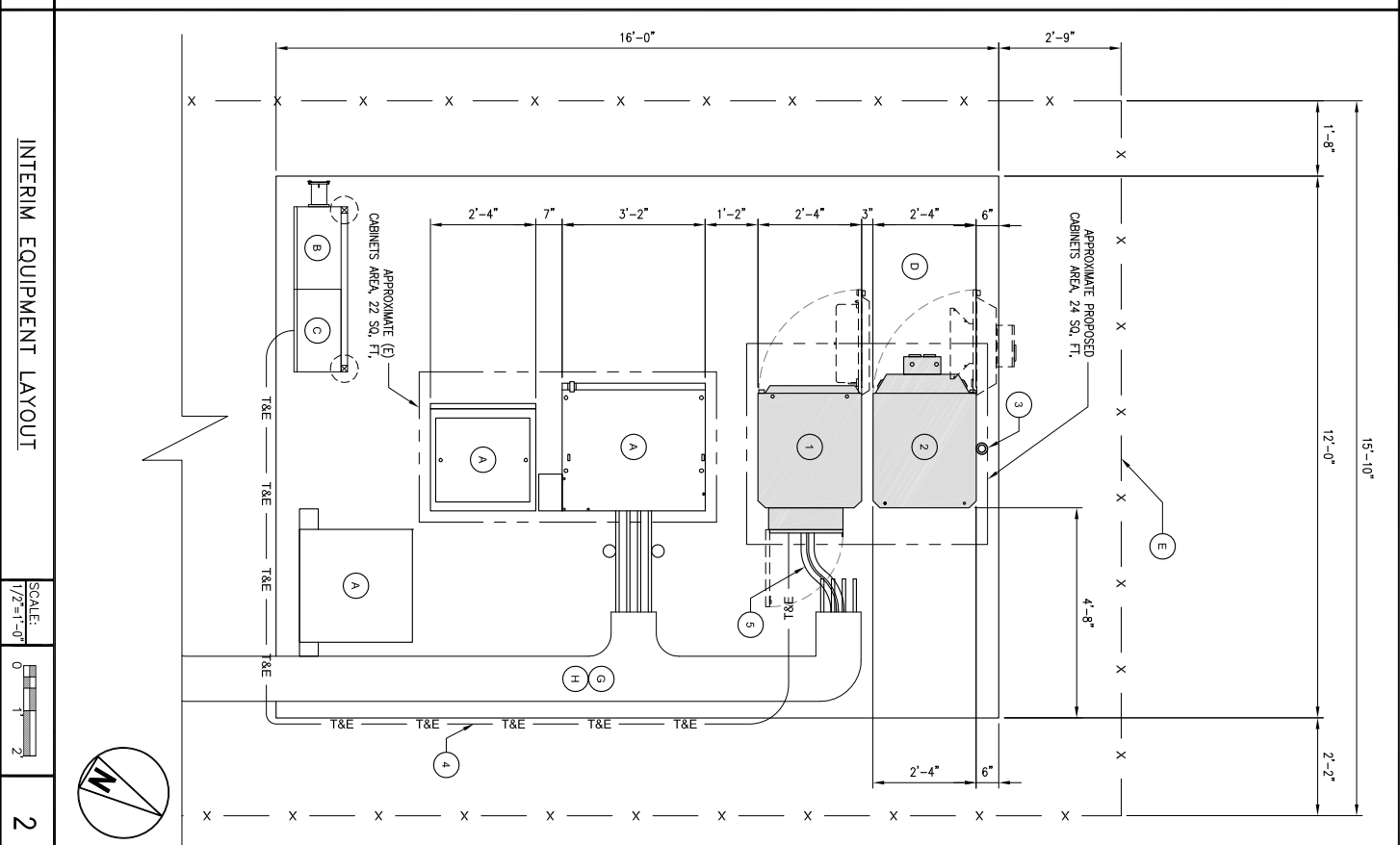
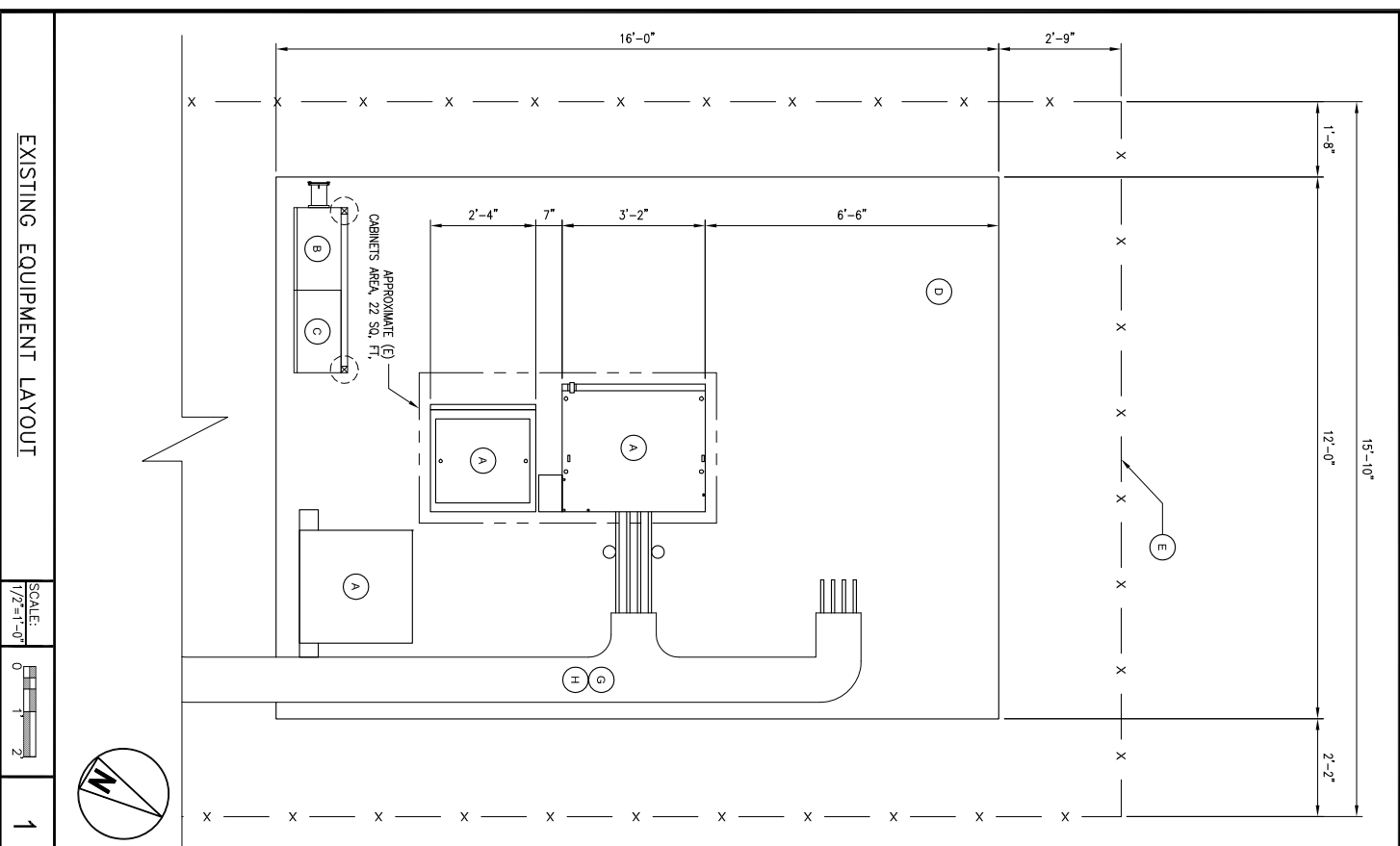
IT IS A VIOLATION OF LAW FOR ANY PERSON, UNLESS THEY ARE A LICENSED PROFESSIONAL ENGINEER, TO ALTER THIS DOCUMENT.

SHEET TITLE
SITE PLAN / ENLARGED SITE PLAN

SHEET NUMBER
A-1

- LEGEND (EXISTING)**
- (A) EXISTING SPRINT EQUIPMENT CABINET (TO BE REMOVED FOR FINAL LAYOUT)
 - (B) EXISTING SPRINT POWER PANEL TO REMAIN
 - (C) EXISTING SPRINT TELCO CABINET TO REMAIN
 - (D) EXISTING SPRINT CONCRETE SLAB TO REMAIN
 - (E) EXISTING SPRINT CHAIN-LINK EQUIPMENT ENCLOSURE
 - (F) EXISTING SPRINT METER MAIN TO REMAIN
 - (G) EXISTING ABOVE GRADE CABLE TRAY TO REMAIN, MODIFIED AS NECESSARY TO ACCOMMODATE NEW COAX CONDUITS
 - (H) EXISTING COAX CABLES (ALL TO BE REMOVED FOR FINAL LAYOUT)

- LEGEND (PROPOSED)**
- 1 PROPOSED SPRINT MMBS CABINET
 - 2 PROPOSED SPRINT BAT B/U CABINET
 - 3 PROPOSED SPRINT GPS ANTENNA
 - 4 PROPOSED POWER AND TELCO CONDUIT FROM NEW MBS TO (E) PPO CABINET
 - 5 PROPOSED SPRINT FIBER CABLES TO BE ROUTED THROUGH (E) STUD-UPS & CONDUITS



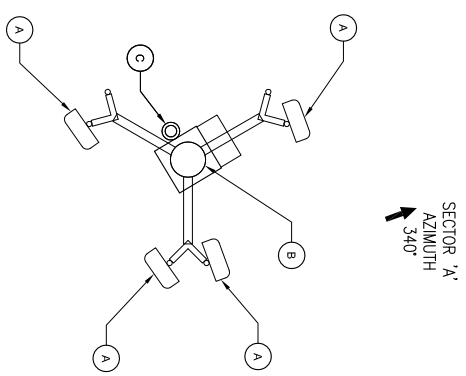
PROJECT NO: FND03XCO063
 DRAWN BY: EN
 CHECKED BY: DMC

| REV | DATE | DESCRIPTION |
|-----|------------|-------------------------|
| 2 | 08/29/2011 | ISSUED FOR 2D SUBMITTAL |
| 1 | 08/22/2011 | ISSUED FOR 2D SUBMITTAL |
| 0 | 08/03/2011 | ISSUED FOR 2D REVIEW |

IT IS A VIOLATION OF LAW FOR ANY PERSON, UNLESS THEY ARE A LICENSED PROFESSIONAL ENGINEER, TO ALTER THIS DOCUMENT.

SHEET TITLE
EQUIPMENT LAYOUTS

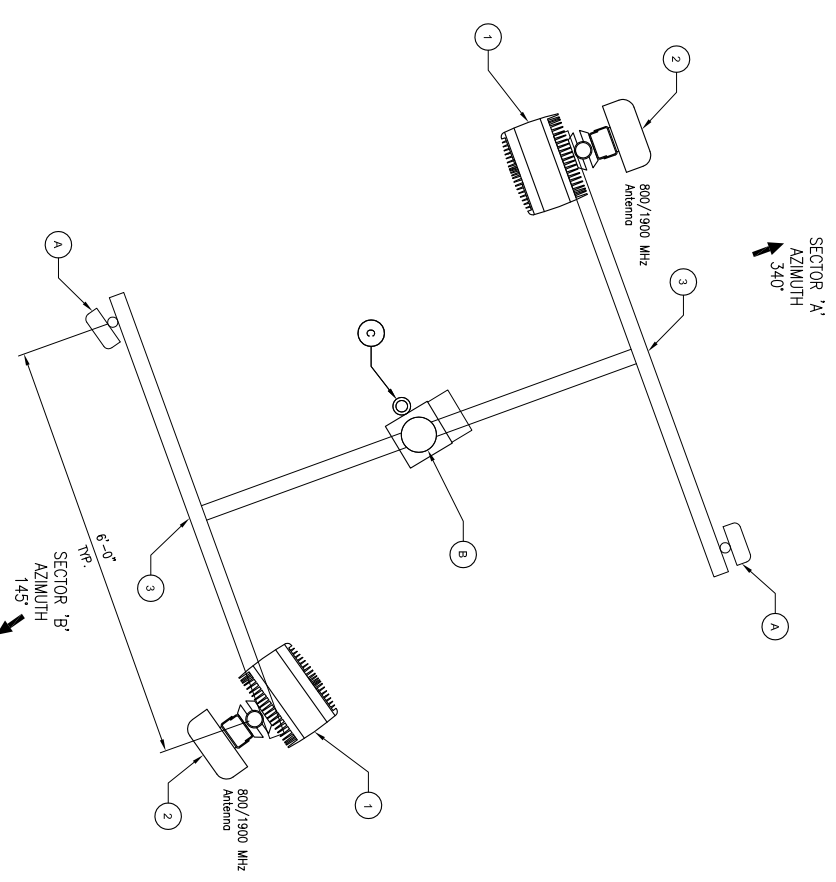
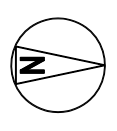
SHEET NUMBER
A-2



EXISTING ANTENNA LAYOUT

SCALE: 3/4"=1'-0"
0 1'

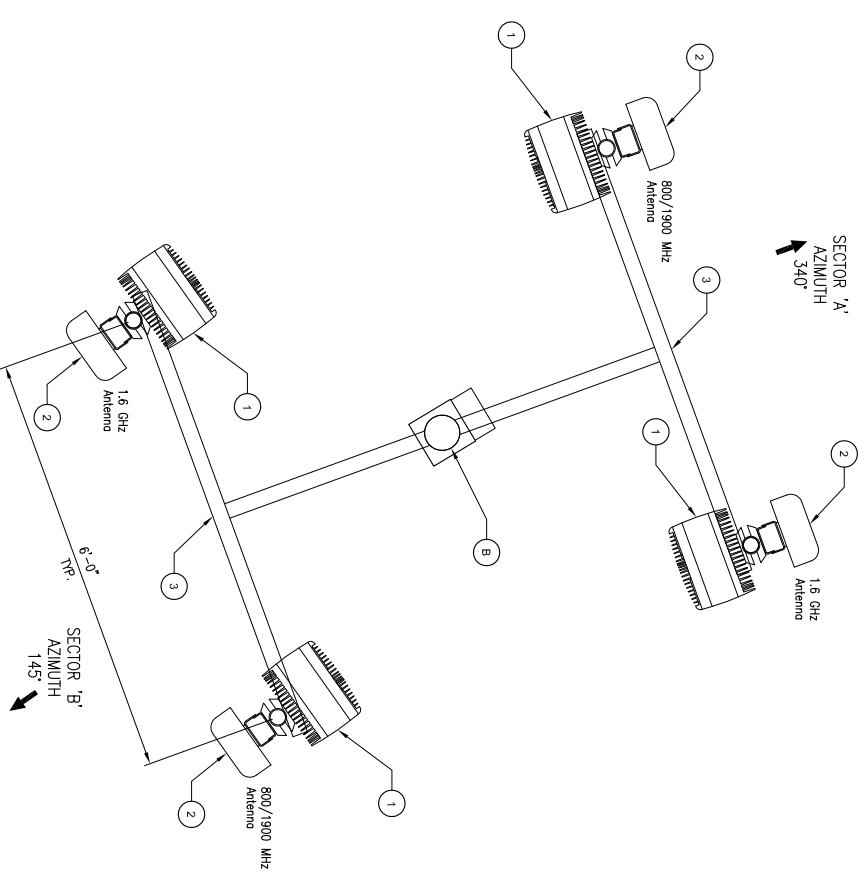
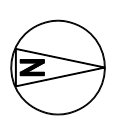
1



INTERIM ANTENNA LAYOUT

SCALE: 3/4"=1'-0"
0 1'

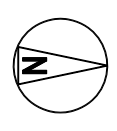
2



PROPOSED ANTENNA LAYOUT

SCALE: 3/4"=1'-0"
0 1'

3



- LEGEND (EXISTING)**
- (A) EXISTING SPRINT PANEL ANTENNAS TO BE REMOVED. (2) PER SECTOR, (4) TOTAL
 - (B) EXISTING 45' MONOPOLE TO REMAIN
 - (C) EXISTING GPS ANTENNA, TO BE REMOVED

- LEGEND (PROPOSED)**
- (1) PROPOSED SPRINT RRUS FINAL - (2) PER SECTOR
 - (2) PROPOSED SPRINT PANEL ANTENNAS, MOUNTED ON NEW T-ARMS, (2) PER SECTOR, (4) TOTAL
 - (3) PROPOSED T-ARMS, (2) TOTAL

6580 SPRINT PARKWAY
OVERLAND PARK, KANSAS 66251

CONNELL DESIGN GROUP, LLC
36455 BANCHELO DRIVE, OVERLAND PARK, KS 66208
(913) 555-8807 OFFICE - (913) 555-8833 FAX

PROJECT NO: FN03X0063
DRAWN BY: EN
CHECKED BY: DM/C

| REV | DATE | DESCRIPTION |
|-----|------------|-------------------------|
| 2 | 08/29/2011 | ISSUED FOR 2D SUBMITTAL |
| 1 | 08/22/2011 | ISSUED FOR 2D SUBMITTAL |
| 0 | 08/03/2011 | ISSUED FOR 2D REVIEW |

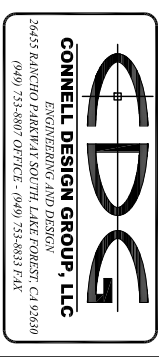
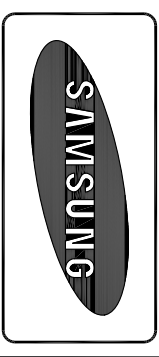
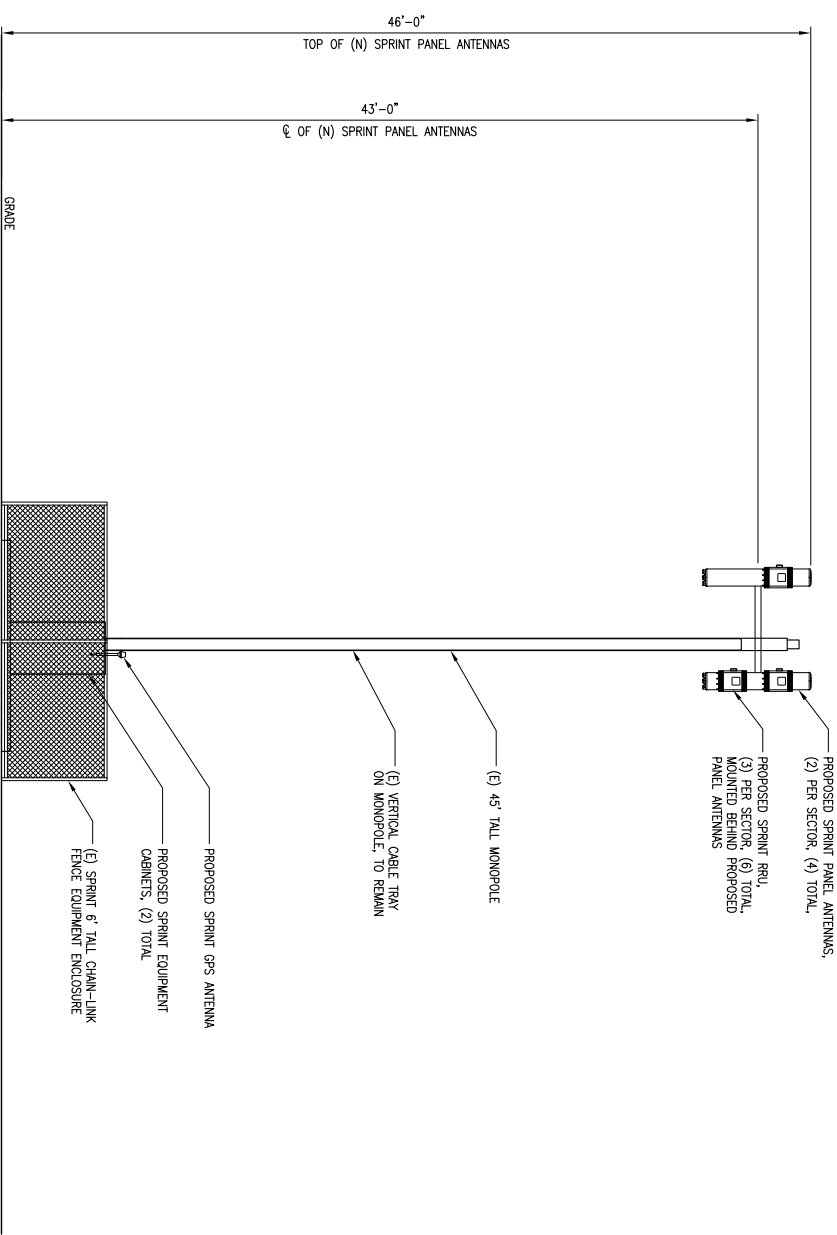
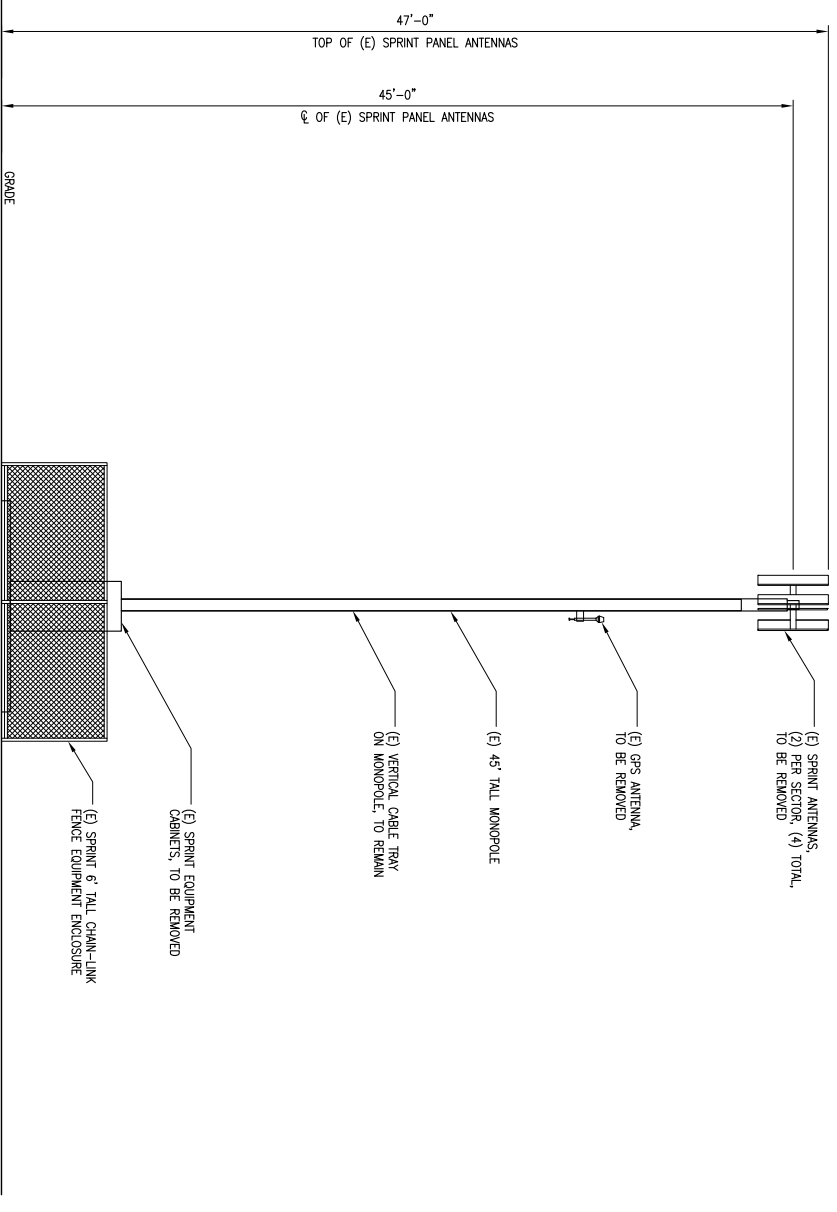
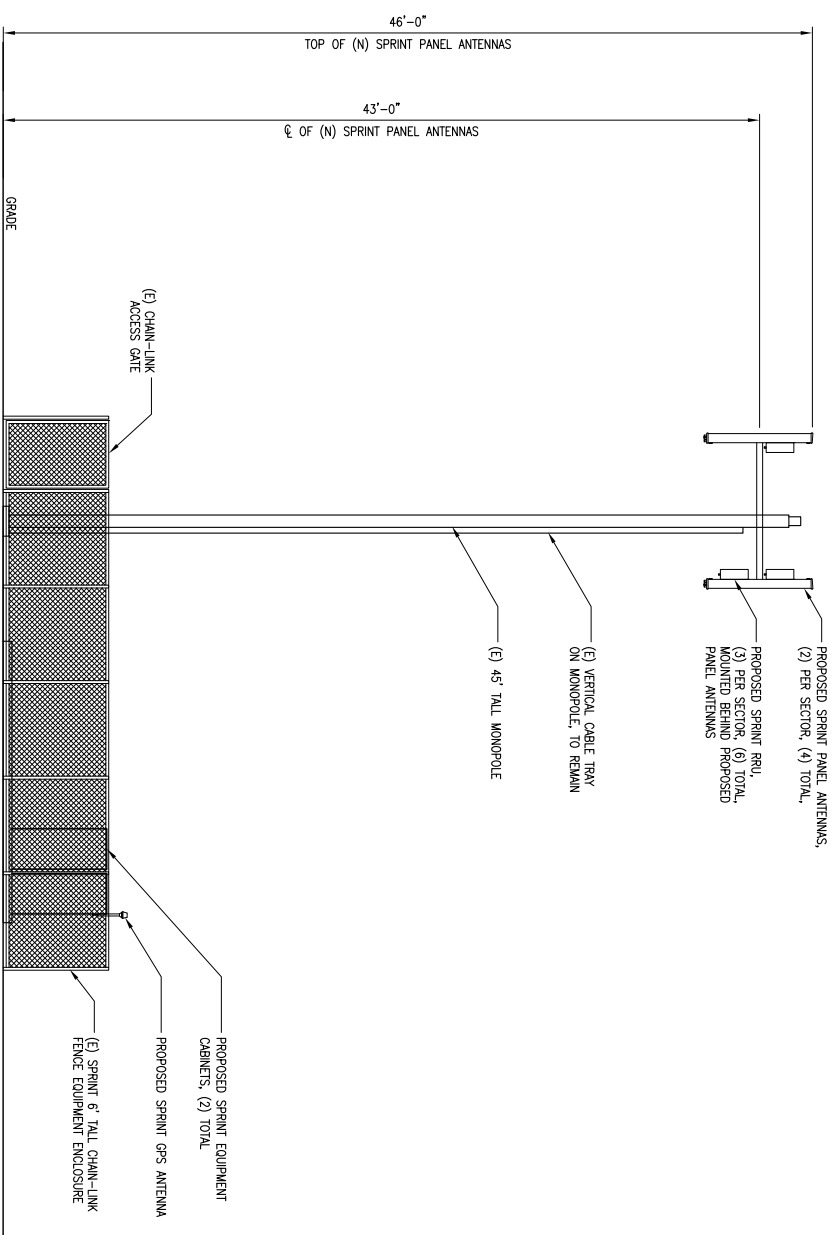
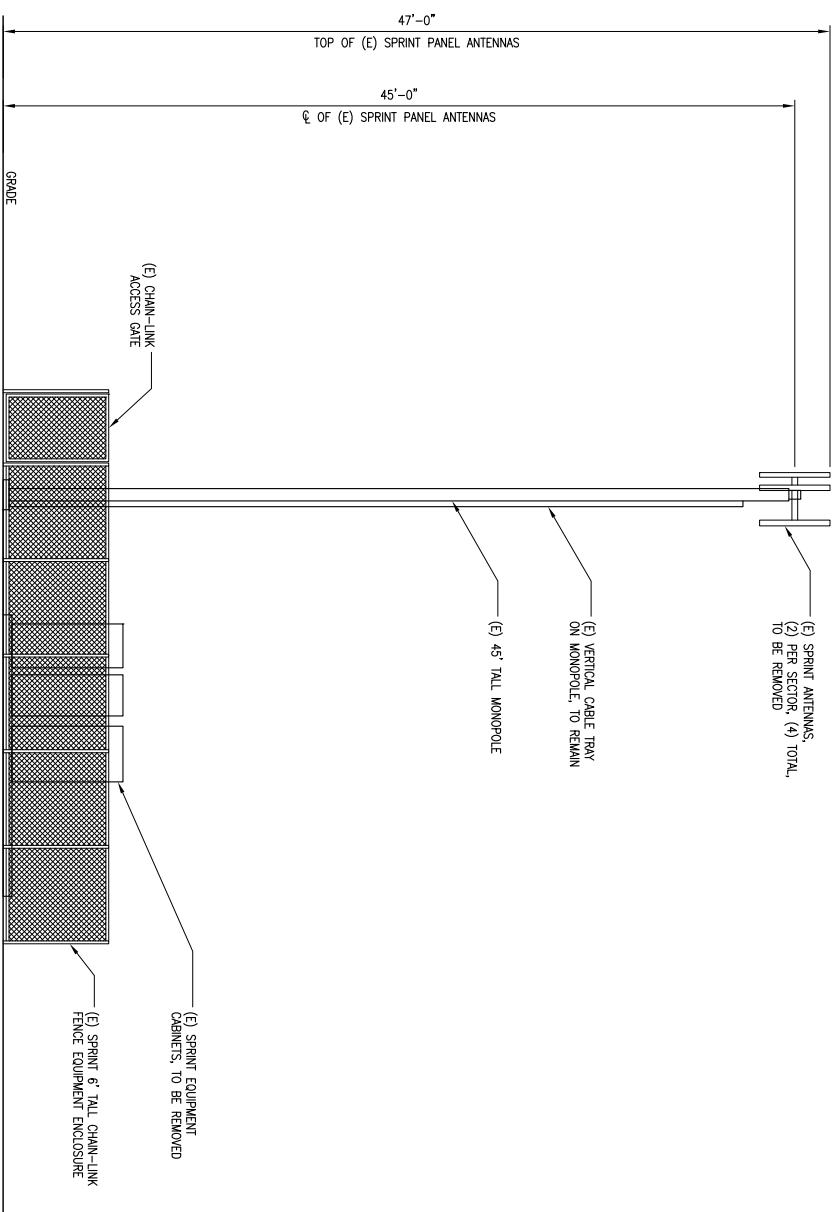
IT IS A VIOLATION OF LAW FOR ANY PERSON, UNLESS THEY ARE A LICENSED PROFESSIONAL ENGINEER, TO ALTER THIS DOCUMENT.

SHEET TITLE
ANTENNA LAYOUTS

SHEET NUMBER
A-3

NOT USED

4



PROJECT NO: FND03X0063
 DRAWN BY: EN
 CHECKED BY: DMC

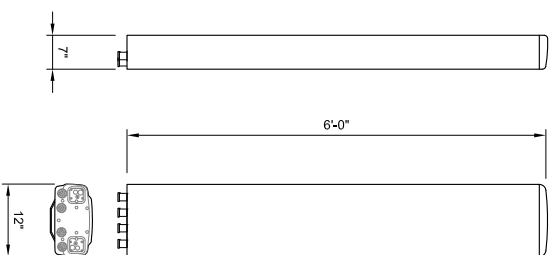
| REV | DATE | DESCRIPTION |
|-----|------------|-------------------------|
| 2 | 08/29/2011 | ISSUED FOR 2D SUBMITTAL |
| 1 | 08/22/2011 | ISSUED FOR 2D SUBMITTAL |
| 0 | 08/03/2011 | ISSUED FOR 2D REVIEW |

IT IS A VIOLATION OF LAW FOR ANY PERSON, UNLESS THERE IS A PROFESSIONAL ENGINEER TO ALTER THIS DOCUMENT.

SHEET TITLE
ELEVATIONS

SHEET NUMBER
A-4

RFS ANTENNA
 RADOME MATERIAL: ASA
 RADOME COLOR: LIGHT GRAY
 DIMENSIONS, HxWxD: (72"x12"x7")
 WEIGHT, WITH PRE-MOUNTED BRACKETS: 50 lbs
 CONNECTOR: (6) 7/16 DIN FEMALE

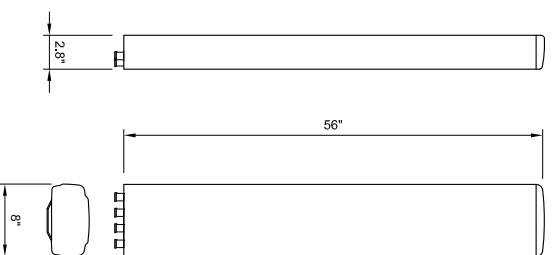


TYPICAL PROPOSED ANTENNA SPECIFICATIONS

NO SCALE

1

RFS ANTENNA
 MODEL: RR65-18-00DP/L2
 DIMENSIONS (HxWxD): 56" x 8" x 2.8"

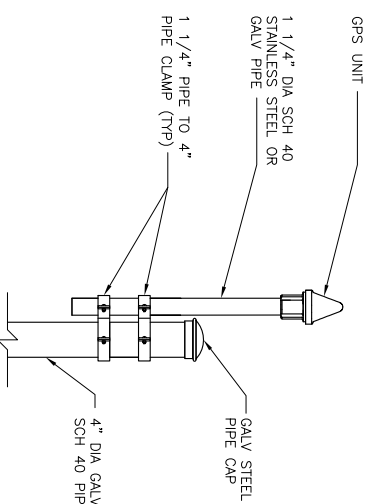


TYPICAL EXISTING ANTENNA SPECIFICATIONS

NO SCALE

4

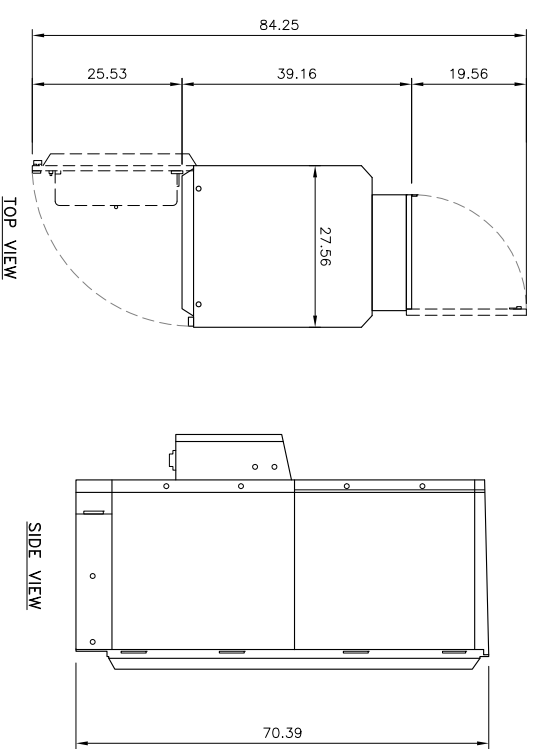
NOTES:
 1. THE GPS ANTENNA MOUNT IS DESIGNED TO FASTEN TO A STANDARD 1-1/4" DIAMETER, SCHEDULE 40, GALVANIZED STEEL OR STAINLESS STEEL PIPE. THE PIPE MUST NOT BE THREADED AT THE ANTENNA MOUNT END. THE PIPE SHALL BE CUT TO THE REQUIRED LENGTH (MINIMUM OF 18 INCHES) USING A HAND OR ROTARY PIPE CUTTER TO ASSURE A SMOOTH AND PERPENDICULAR CUT. A HACK SAW SHALL NOT BE USED. THE CUT PIPE END SHALL BE DEBURRED AND SMOOTH IN ORDER TO SEAL AGAINST THE NEOPRENE GASKET ATTACHED TO THE ANTENNA MOUNT.
 2. IT IS CRITICAL THAT THE GPS ANTENNA IS MOUNTED SUCH THAT IT IS WITHIN 2 DEGREES OF VERTICAL AND THE BASE OF THE ANTENNA IS WITHIN 2 DEGREES OF LEVEL.
 3. DO NOT SWEEP TEST GPS ANTENNA.



MMBS SPECIFICATIONS

NO SCALE

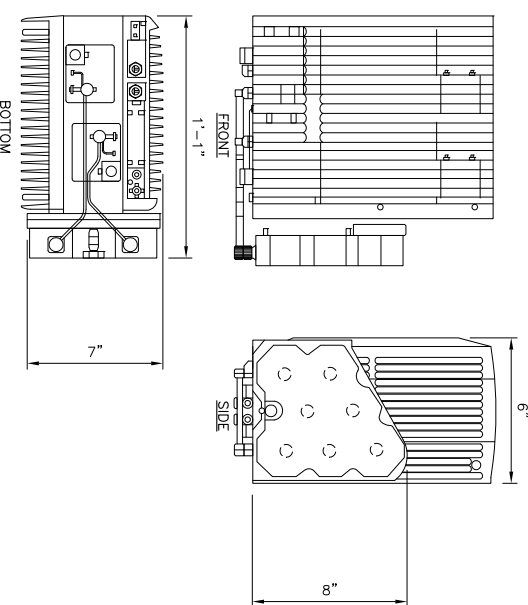
2



800MHZ RRU MECHANICAL SPECIFICATIONS

NO SCALE

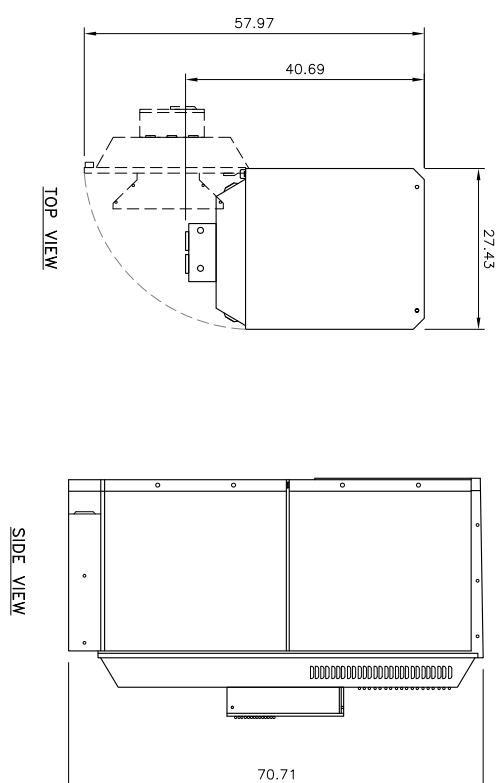
5



BAT BU CABINET SPECIFICATIONS

NO SCALE

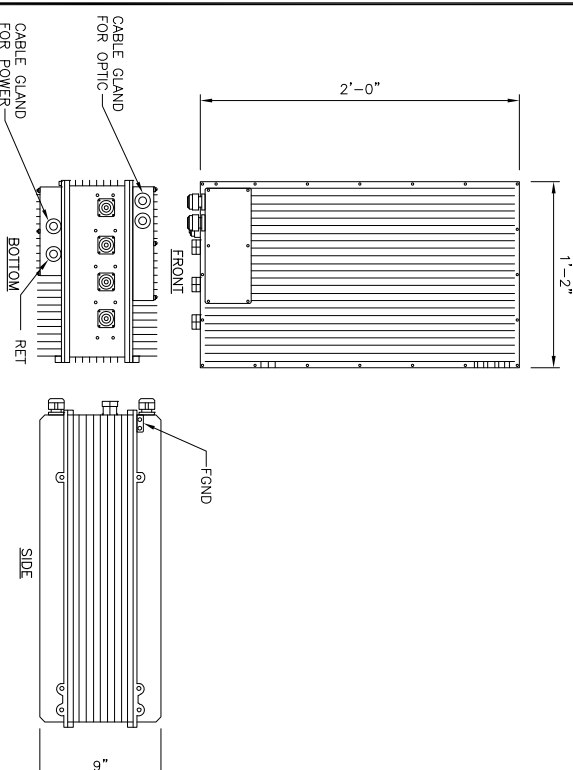
3



1.9MHZ RRU MECHANICAL SPECIFICATIONS

NO SCALE

6



GPS UNIT PIPE MOUNT

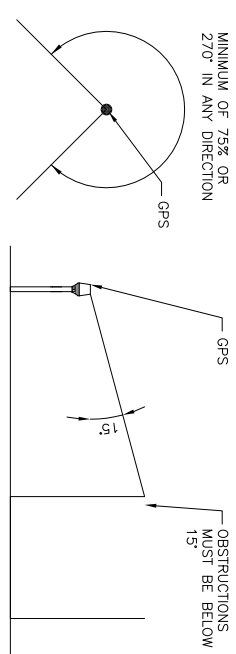
NO SCALE

8

GPS MINIMUM SKY VIEW REQUIREMENTS

NO SCALE

9



Sprint
 6580 SPRINT PARKWAY
 OVERLAND PARK, KANSAS 66251

SAMSUNG

RV

BLACK & VEATCH

CONNELL DESIGN GROUP, LLC
 34655 RANCHO DRIVE, SUITE 100, DUBLINO, CA 94568
 (949) 355-8807 OFFICE - (949) 355-8833 FAX

PROJECT NO: FND03X0063
 DRAWN BY: EN
 CHECKED BY: DMC

| REV | DATE | DESCRIPTION |
|-----|------------|-------------------------|
| 2 | 08/29/2011 | ISSUED FOR 2D SUBMITTAL |
| 1 | 08/22/2011 | ISSUED FOR 2D SUBMITTAL |
| 0 | 08/03/2011 | ISSUED FOR 2D REVIEW |

IT IS A VIOLATION OF LAW FOR ANY PERSON, UNLESS THEY ARE A PROFESSIONAL ENGINEER, TO ALTER THIS DOCUMENT.

SHEET TITLE
EQUIPMENT DETAILS

SHEET NUMBER
A-5