

**CITY OF ALBANY
WATERFRONT COMMITTEE
STAFF REPORT**

**Agenda date: March 7, 2012
Prepared by: JB**

ITEM: 5-3

SUBJECT: Discussion of Next Phase of Improvements to the Cove Enhancement Project Including Landscaping, Seating, Bike Racks, Signage, etc

RECOMMENDATION

Provide direction on scope of work to be included in next phase of improvements.

BACKGROUND

The Committee and City staff have been working on landscaping improvements to the "Cove" sculpture area for some time. In recent months, Tony Wolcott has made presentations to the Committee on the progress made on planting, irrigation and mulching in the area. Attached is a recent photograph showing the current condition of the Cove area.

DISCUSSION

Potential improvements in the next phase would be improvements to benches, steps, tables, surfacing, removal of bollards, relocation of trash cans, installation of bike racks, new signage, etc. To facilitate Committee discussion of next phases are the following reference documents:

- Property survey showing location of City property
- Conceptual plans for EBRPD Beach project adjacent to the Cove
- Concept drawing prepared by Chair Papalia





REVISIONS	DATE
△	
△	
△	

EAST BAY REGIONAL PARK DISTRICT
2950 PERALTA OAKS COURT, OAKLAND, CA 94605 WWW.EBPARKS.ORG 888-327-2757

APPROVED
design:
operations:

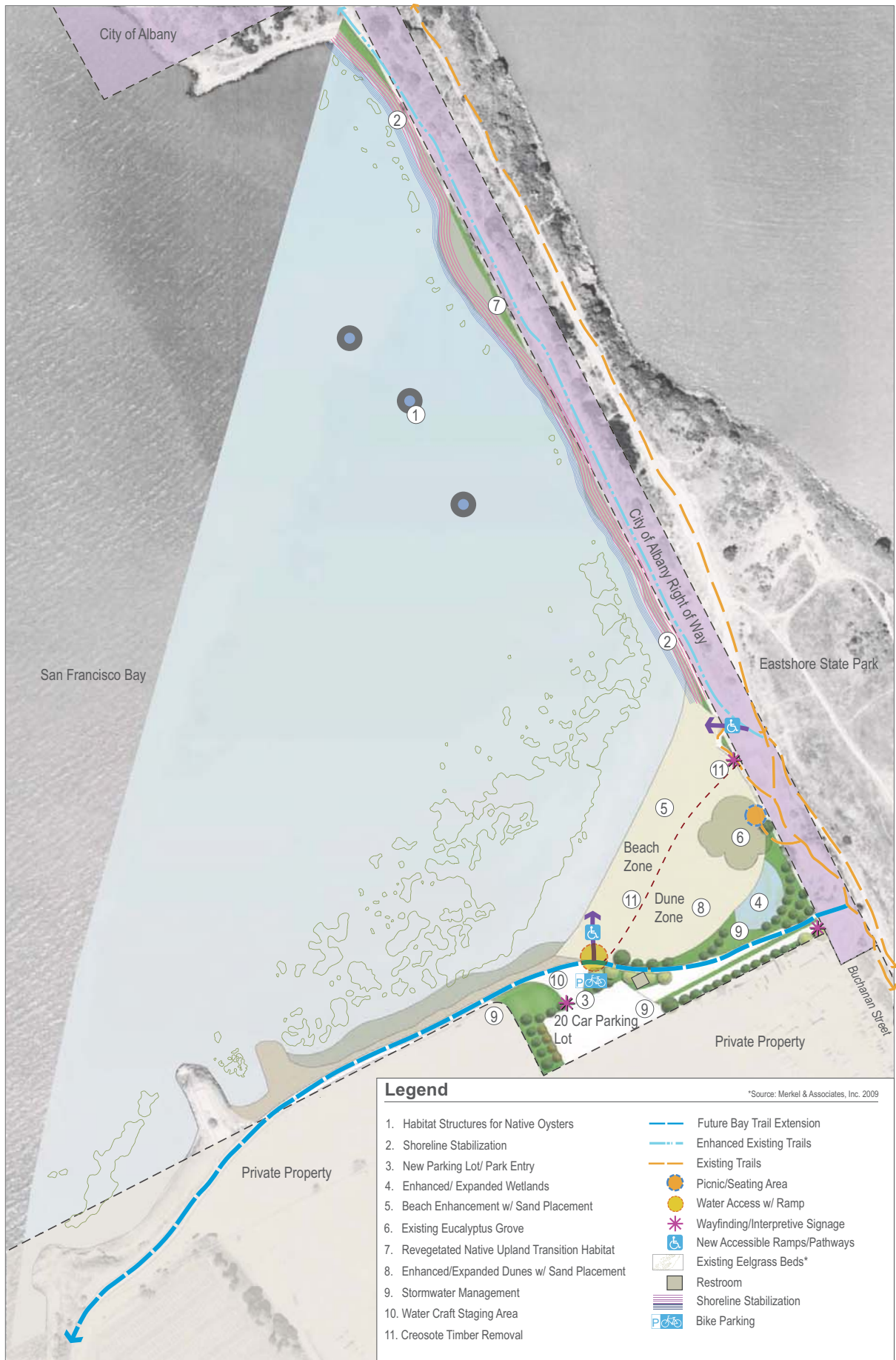
scale: 1" = 50'
drawn: GSTJ
checked:
date: 2011.08.02

PRELIMINARY AERIAL & BOUNDARY EXHIBIT
Eastshore State Park Trail
Albany Bulb
Albany, California
PROJECT NO. 104861F

SHEET NO. 2
OF: 2

CONTRACT NO.

T:\PARKS\Eastshore State Park Trail\04861F\Draw\04861Fsheet.dwg 6/25/11 03:54:20 PM gsp/gh





Legend

- | | | |
|-----------------------------------|--|---------------------------------|
| 1. 20 Car Parking Lot/ Park Entry | 7. Creosote Timber Removal | Existing Trails |
| 2. Water Access w/ Ramp | 8. Existing Eucalyptus Grove | Picnic/Seating Area |
| 3. Stormwater Management | 9. Beach Enhancement w/ Sand Placement | Wayfinding/Interpretive Signage |
| 4. Restroom | 10. Expanded Dunes w/ Sand Placement | New Accessible Ramps/Pathways |
| 5. Future Bay Trail Extension | 11. Water Craft Staging Area | Bike Parking |
| 6. Enhanced/Expanded Wetlands | | |



Existing
Vegetation

Regraded Trail
and Bioswale

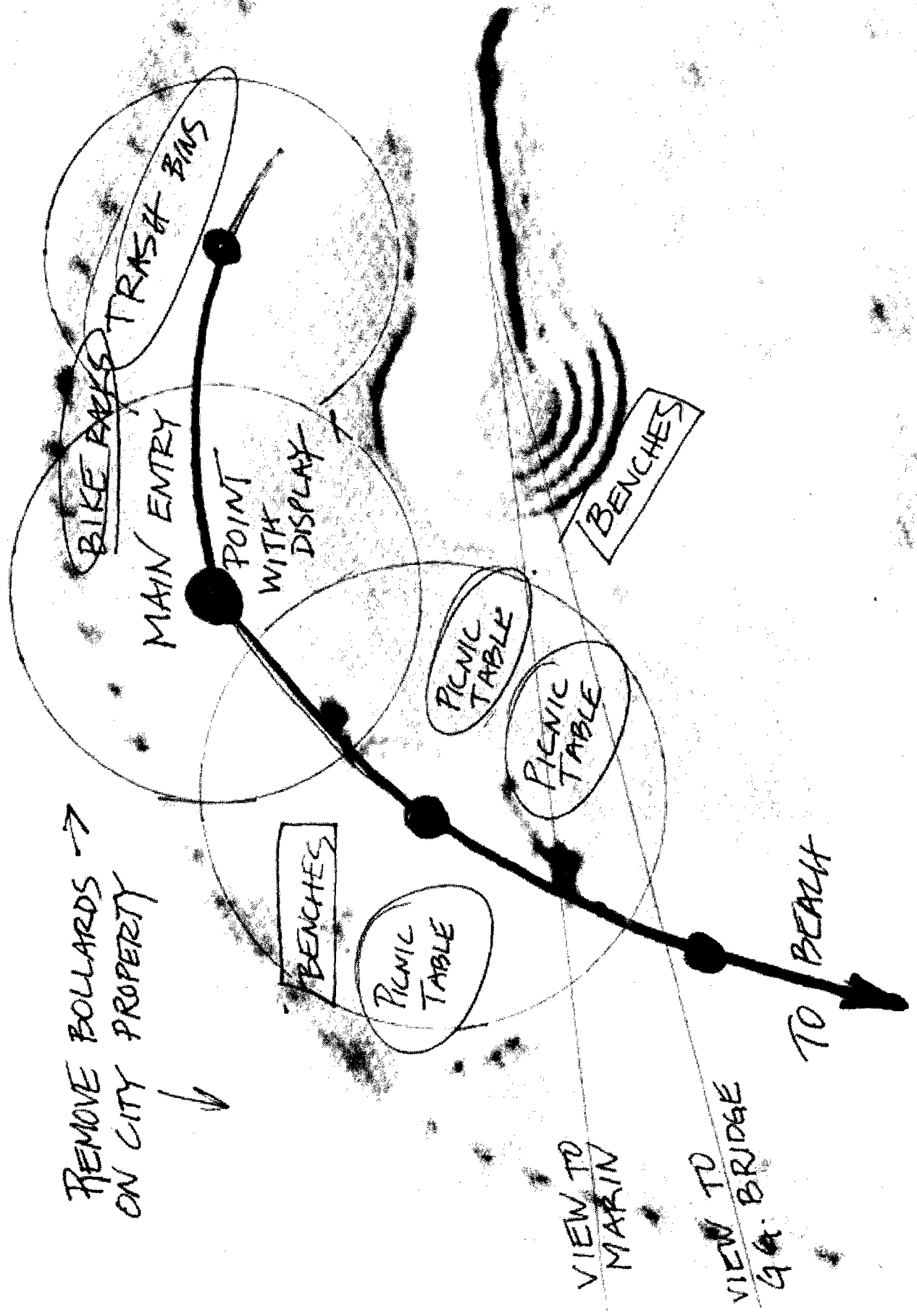
Upland
Transitional
Habitat

Engineered
Rock

Subtidal Habitat Structures and Eelgrass

BIKE PACKS

REMOVE BOLLARDS →
ON CITY PROPERTY ↓



VIEW TO
MARIN

VIEW TO
BRIDGE

TO BEACH