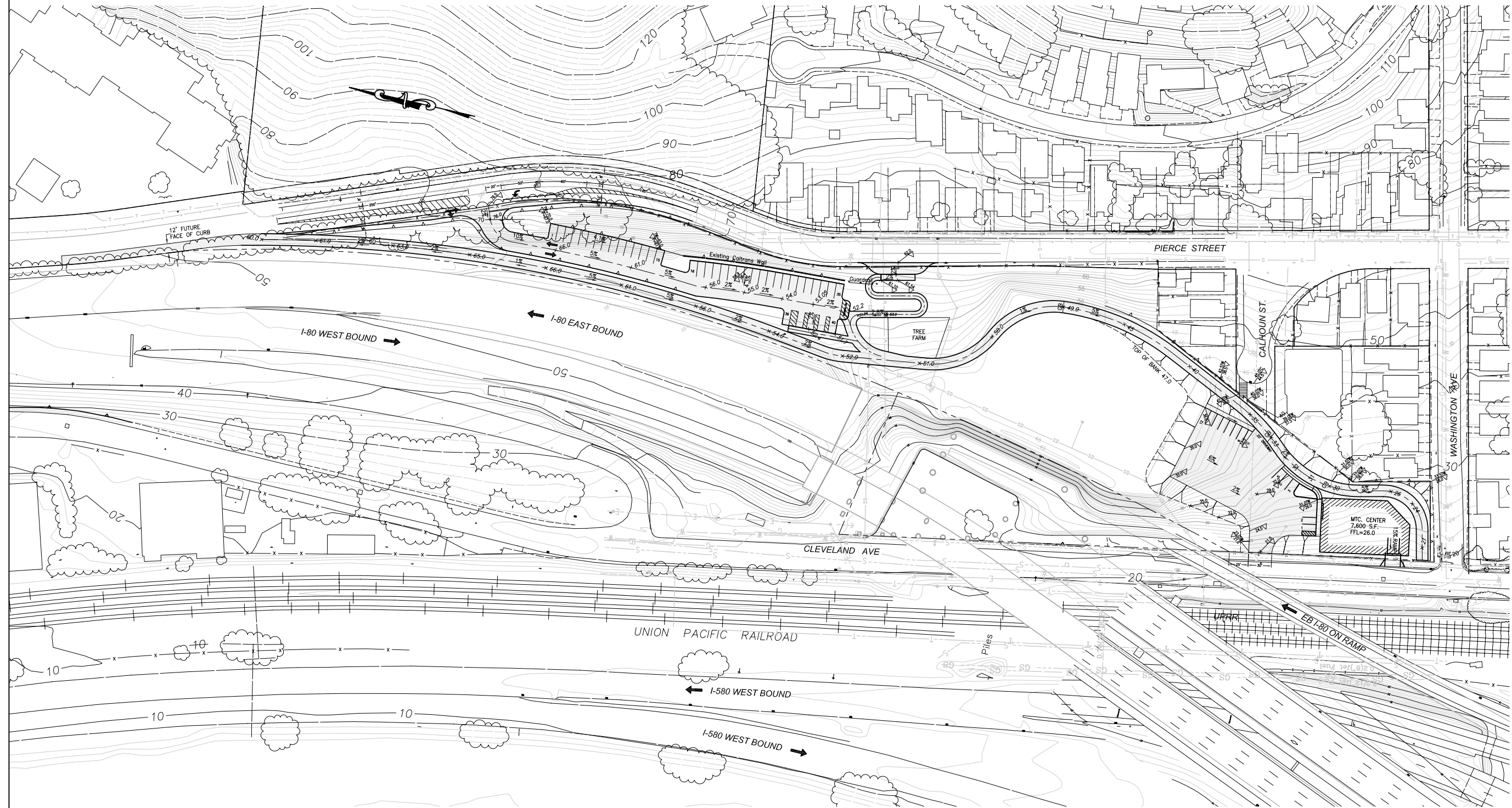


Q:\2008.01.1.82 Maintenance Center- Washington Ave. Site Drawings\1.82 Pierce Maint 2 options.dwg, 3/25/2011 10:43:16 AM, Adobe PDF



DATE	MARK	REVISION	INIT.

Designed by:
 Drawn by: CAG
 Checked by: MM
 Reviewed by: RWL
 Date: Feb 22, 2010



LEPTIEN, CROWIN, COOPER, MORRIS & POORE, INC.
 d/b/a: LCC, Inc.
 Civil Engineering Land Surveying
 930 Estudillo Street
 Martinez, California 94553-1620
 (925) 228-4218 Fax (925) 228-4639
 SCALE: 1"=50'



City of Albany
 PIERCE STREET MAINTENANCE CENTER SITE
 ALAMEDA COUNTY CALIFORNIA

OPTION 1
 NORTHEAST CORNER CLEVELAND
 File:2008.011.82 F.B. SHEET No. 1 OF 1