

A1



A2



B1



B2



C1



C2



C3



C4



D1



D2

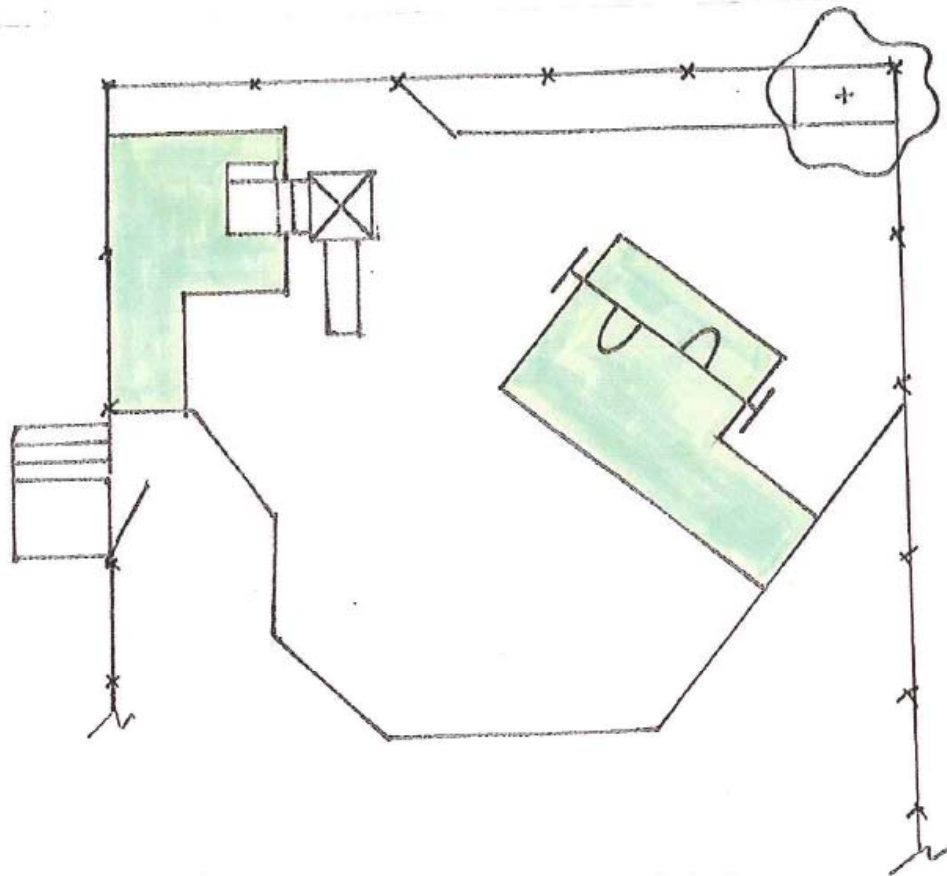


E1

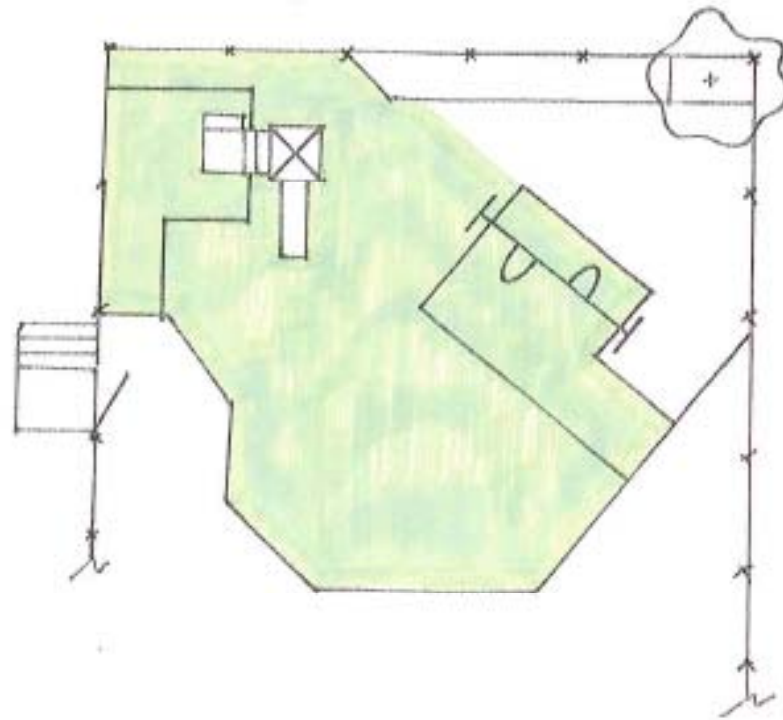


E2



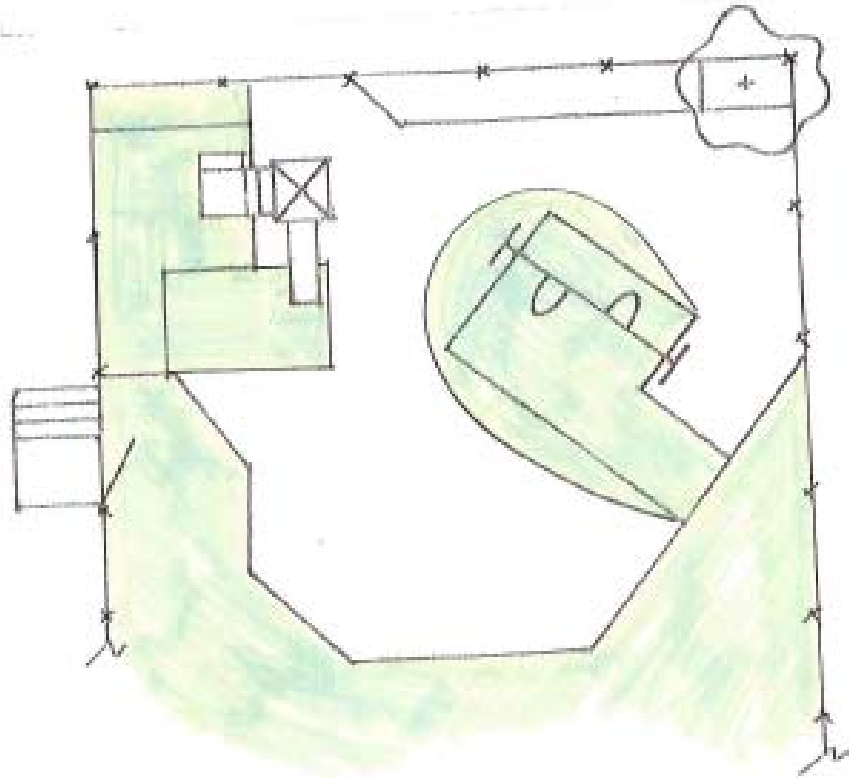


DARTMOUTH PARK, ALBANY
EXISTING CONDITIONS



DARTMOUTH PARK, ALBANY
ORIGINAL PROPOSAL

OPTION 1



DARTMOUTH PARK, ALBANY
ALTERNATIVE PROPOSAL

OPTION 2



1.1 Scope

This handbook presents safety information for public playground equipment in the form of guidelines. Publication of this handbook is expected to promote greater safety awareness among those who purchase, install, and maintain public playground equipment. Because many factors may affect playground safety, the U.S. Consumer Product Safety Commission (CPSC) staff believes that guidelines, rather than a mandatory rule, are appropriate. These guidelines are not being issued as the sole method to minimize injuries associated with playground equipment. However, CPSC staff believes that the recommendations in this handbook will contribute to greater playground safety.

Some states and local jurisdictions may require compliance with this handbook and/or ASTM voluntary standards. Additionally, risk managers, insurance companies, or others may require compliance at a particular site; check with state/local jurisdictions and insurance companies for specific requirements.

1.2 Intended Audience

This handbook is intended for use by childcare personnel, school officials, parks and recreation personnel, equipment purchasers and installers, playground designers, and any other members of the general public (e.g., parents and school groups) concerned with public playground safety and interested in evaluating their respective playgrounds. Due to the wide range of possible users, some information provided may be more appropriate for certain users than others.

- From a risk control standpoint, I have the following observations:

-

- **Playground Surfacing**

-

- The tot lot is primarily sand (loose-fill surfacing) with a rubber sidewalk on the lot perimeter and in the landing area of some equipment. The sand on the rubber surface creates a slip and fall hazard (see attached photos). The city is considering removing most of the loose-fill sand surfacing and replacing it with a unitary surfacing material such as rubber mats or tiles. This would control the slip and fall exposure, as well as allow the city to conform to ADA accessibility guidelines per ADA consultant recommendations.

-

- In addition, playground surfacing under equipment is one of the most important considerations in the prevention of head injuries from falls from play structures. The Consumer Product Safety Commission, Public Playground Safety Handbook, provides recommendations concerning playground surfacing and the critical height rating requirements. In Section 2.4.2 of the handbook,

-

- Selecting a Surfacing Material, it is recommended that loose-fill surfacing (e.g. sand) be avoided for playgrounds intended for toddlers.

-

- Based on the liability concerns outlined, it would be prudent to replace as much of the sand as possible in areas adjacent to rubber walkways and play structures.

-

- **Community Toy Recycling**

-

- Local residents have established the park as a community toy recycling venue. The photographs provided show various toys brought to the park where they remain until a neighbor wishes to bring the toy home for their own use. This creates a potential liability exposure for the city for the following reasons:

-

- Damaged or broken toys may cause injury to a child at the park
- Toys brought to the park may not be appropriate for the toddler age group
- Toys may remain unclaimed and deteriorate over time on the park premises
-
- It is recommended that the community toy recycling efforts be redirected to a more appropriate venue, such as an existing community recycling event, to control this exposure.

-