

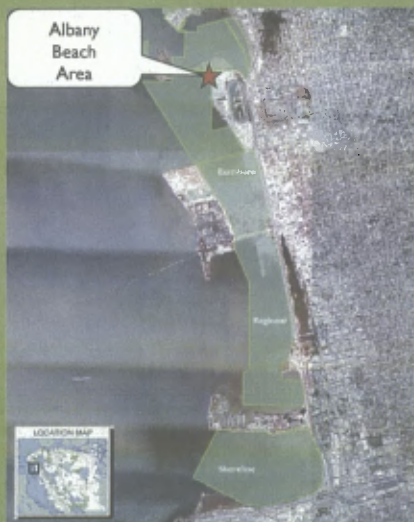
Eastshore State Park - Albany Beach Habitat Restoration and Public Access Feasibility Study



Brad Olson
Environmental Programs Manager

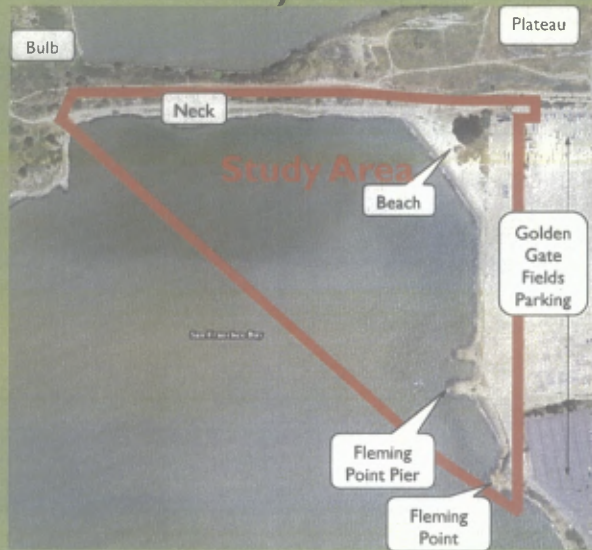
April 28, 2011

Eastshore Park



EASTSHORE STATE PARK - ALBANY BEACH
Habitat Restoration and Public Access Feasibility Study

Study Area:



EASTSHORE STATE PARK - ALBANY BEACH
Habitat Restoration and Public Access Feasibility Study

3

Background

- Eastshore State Park General Plan Completed in 2002
- February 2010, Board Authorization to Hire LSA Associates and Proceed with Feasibility Study
- March 2010, Regulatory Agency Meeting
- September 2010, Board Executive Committee Update



EASTSHORE STATE PARK - ALBANY BEACH
Habitat Restoration and Public Access Feasibility Study

Background (continued)

- October 2010, Citizens for East Shore Parks Update
- December 2010, Public Workshop #1
- January 2011, Board Executive Committee Update
- February 2011, Public Workshop #2



EASTSHORE STATE PARK - ALBANY BEACH
Habitat Restoration and Public Access Feasibility Study

Significant Public Comments From Workshop #2

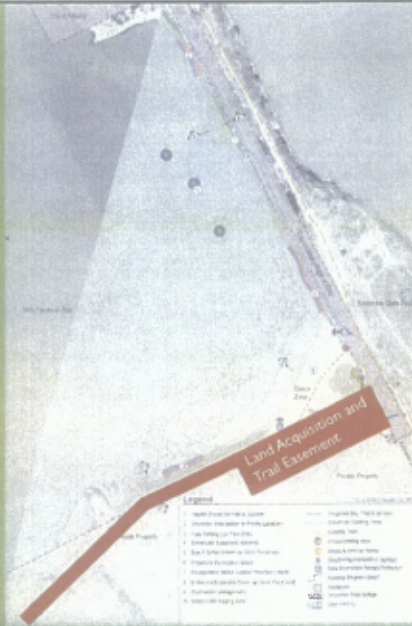
- Protect and Improve Water Quality
- Want Restrooms, Benches, Non-Motorized Watercraft Access and Better Beach Access
- Some Prefer Minimal to No Improvements
- Some Proposed Improvements Inconsistent with the General Plan (e.g. boating facilities, dog beaches, etc.)
- Confusion on Dog Policies (No policy changes proposed)
- Feasibility Study vs. Project



EASTSHORE STATE PARK - ALBANY BEACH
Habitat Restoration and Public Access Feasibility Study

District Activities In Albany Beach Area

- Resolution of Need and Necessity Approved on April 5, 2011
- San Francisco Bay Trail Project



EASTSHORE STATE PARK - ALBANY BEACH
Habitat Restoration and Public Access Feasibility Study

7

Recommendation Criteria

- Based on Feasibility Study and Outreach Efforts
- Implementation of Eastshore State Park General Plan
- Compliance with Regional Water Quality Control Board Order
- Property Ownership and Legal Access



EASTSHORE STATE PARK - ALBANY BEACH
Habitat Restoration and Public Access Feasibility Study

8

Recommendation Criteria (continued)

- Protection of Public Health and Safety
- Minimize Potential Environmental Impacts
- Permit Requirements and Approval Time
- Funding Availability and Restrictions
- Cost/Benefit Value



Recommended Improvements



Proposed Project

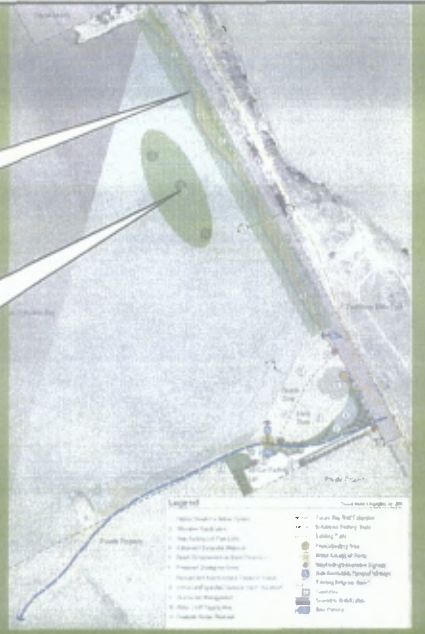
Creosote Timber and Inorganic Debris Removal



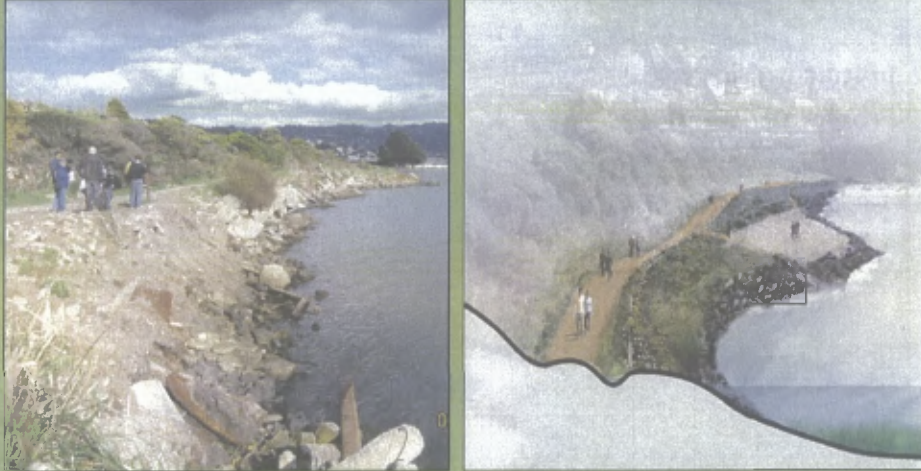
Proposed Project

Shoreline Stabilization And Enhancement

Oyster Habitat



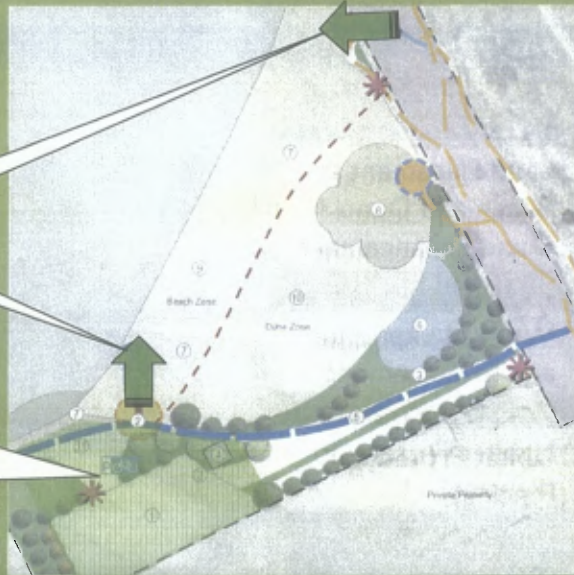
Existing and Proposed Shoreline



Proposed Project

Beach Access Enhancements

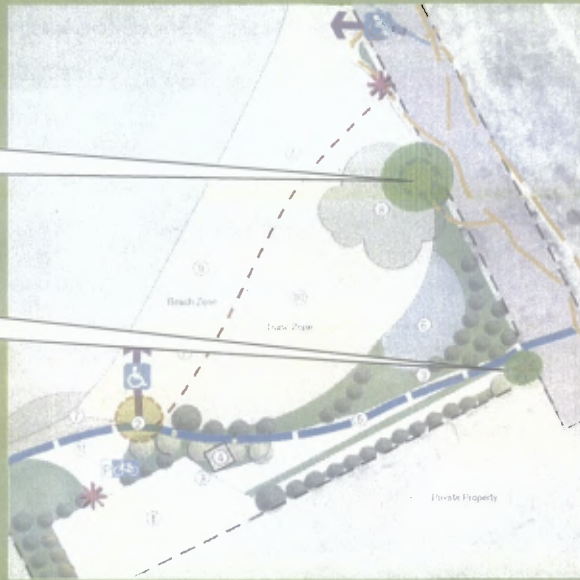
Water Access, Parking, Restroom, Bike Racks, Exhibits



Proposed Project

Picnic Facility +
Preserve Eucalyptus

Park Entrance
Signage



EASTSHORE STATE PARK - ALBANY BEACH
Habitat Restoration and Public Access Feasibility Study

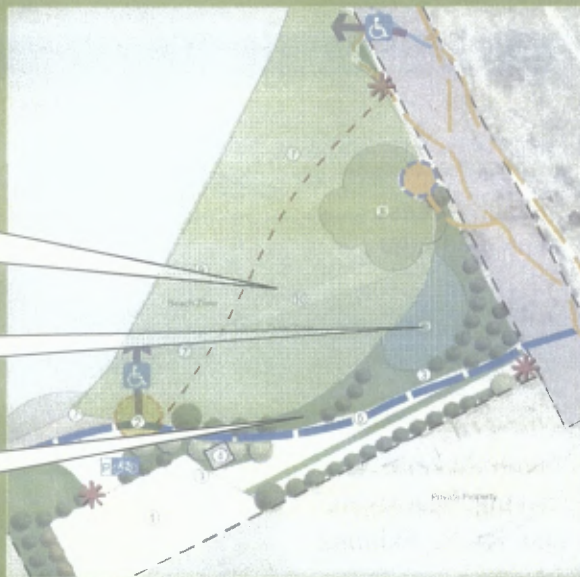


Proposed Project

Sand Placement at
Beach and Dune +
Dune Enhancement

Wetland Expansion
and Enhancement

Habitat Protection
(Fencing)



EASTSHORE STATE PARK - ALBANY BEACH
Habitat Restoration and Public Access Feasibility Study



Conceptual Project View



EASTSHORE STATE PARK - ALBANY BEACH
Habitat Restoration and Public Access Feasibility Study

17

Preliminary Cost Estimate Proposed Project

– South Neck	\$2,167,900
– Albany Beach and Vicinity	\$1,796,150
– In Water/Bay Work	<u>\$30,000</u>

Cost = \$3,994,050*

*Rough estimate based on concept alternatives and subject to refinement and revision as detailed design is developed. Does not include costs for property acquisition, easements, permitting, design, staff time, monitoring or maintenance. Presented in 2010 dollars.



EASTSHORE STATE PARK - ALBANY BEACH
Habitat Restoration and Public Access Feasibility Study

18

Operations and Maintenance

Current Operations and Maintenance

- Restroom, Garbage/Dumping, Graffiti, Vandalism

Potential Expansion to Service

- Restrooms
- Picnic Areas
- Paving
- Fences and Gates
- Weeding
- Public Safety



Next Steps

- Approval of Project Description
- Identify Potential Funding Sources
- Board Direction on Next Steps

For More Information Contact Chris Barton at
(510) 544-2627 or cbarton@ebparks.org

