



SITE PLAN - G.2
PERSPECTIVE
RENDERING - 1
SCALE: NTS

SAFeway STORE - #2869

1500 SOLANO AVENUE
ALBANY ■ CALIFORNIA

DATE: 2011-03-09

REVISED:

PROJECT NO.: 20916-P01

COPYRIGHT © 2011



SGPA ARCHITECTURE AND PLANNING
200 Pine Street, Studio 500 San Francisco, CA 94104 p. 415.963.0131
www.sgpa.com



SITE PLAN - G.2
PERSPECTIVE
RENDERING - 2
SCALE: NTS

SAFEWAY STORE - #2869

1500 SOLANO AVENUE
ALBANY ■ CALIFORNIA

DATE: 2011-03-09

REVISED:

PROJECT NO.: 20916-P01

COPYRIGHT © 2011



SGPA ARCHITECTURE AND PLANNING
200 Pine Street, Studio 500 San Francisco, CA 94104 p. 415.963.0131
www.sgpa.com



SITE PLAN - G.2
PERSPECTIVE
RENDERING - 3
SCALE: NTS

SAFeway STORE - #2869

1500 SOLANO AVENUE
ALBANY ■ CALIFORNIA

DATE: 2011-03-09

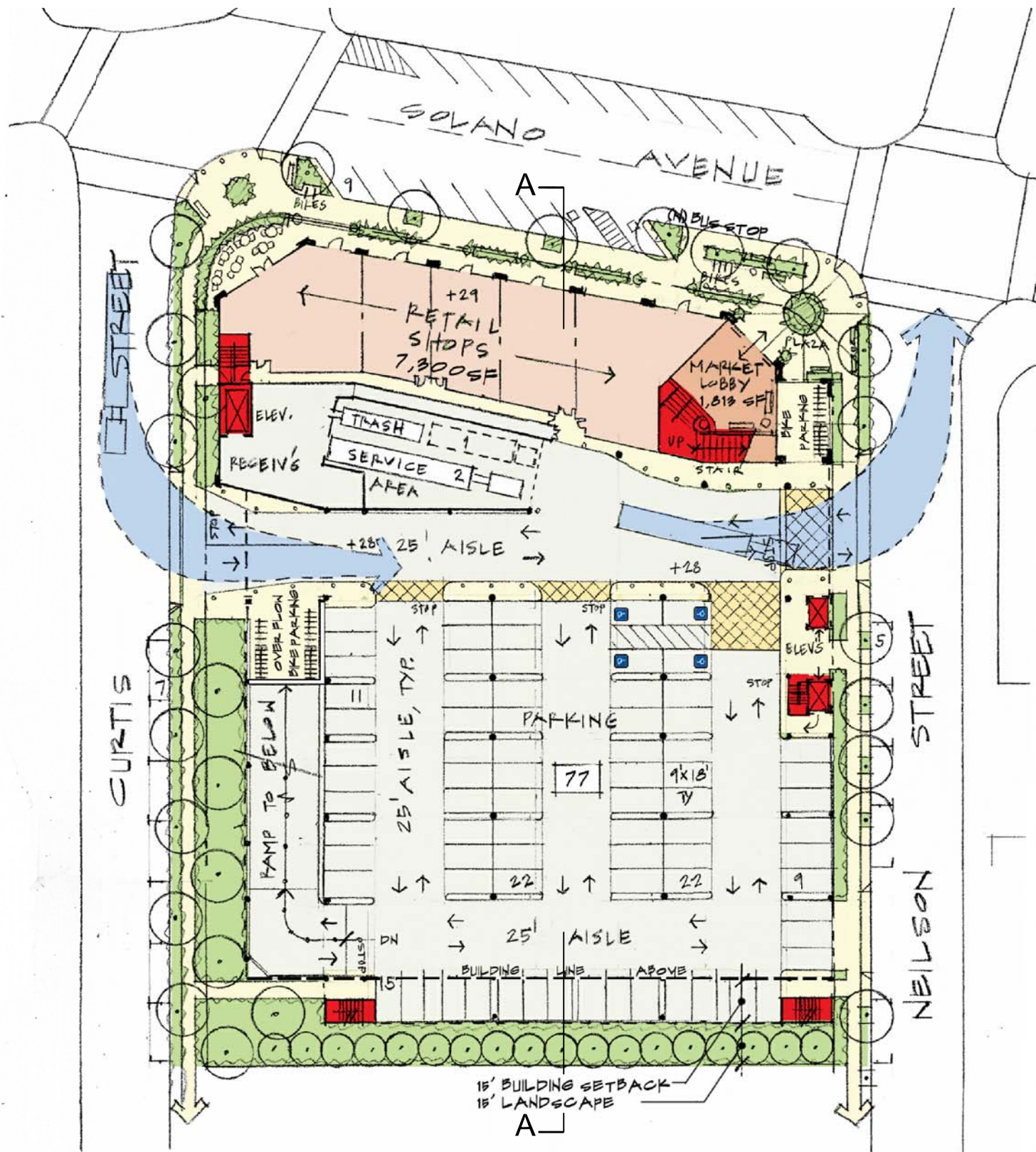
REVISED:

PROJECT NO.: 20916-P01

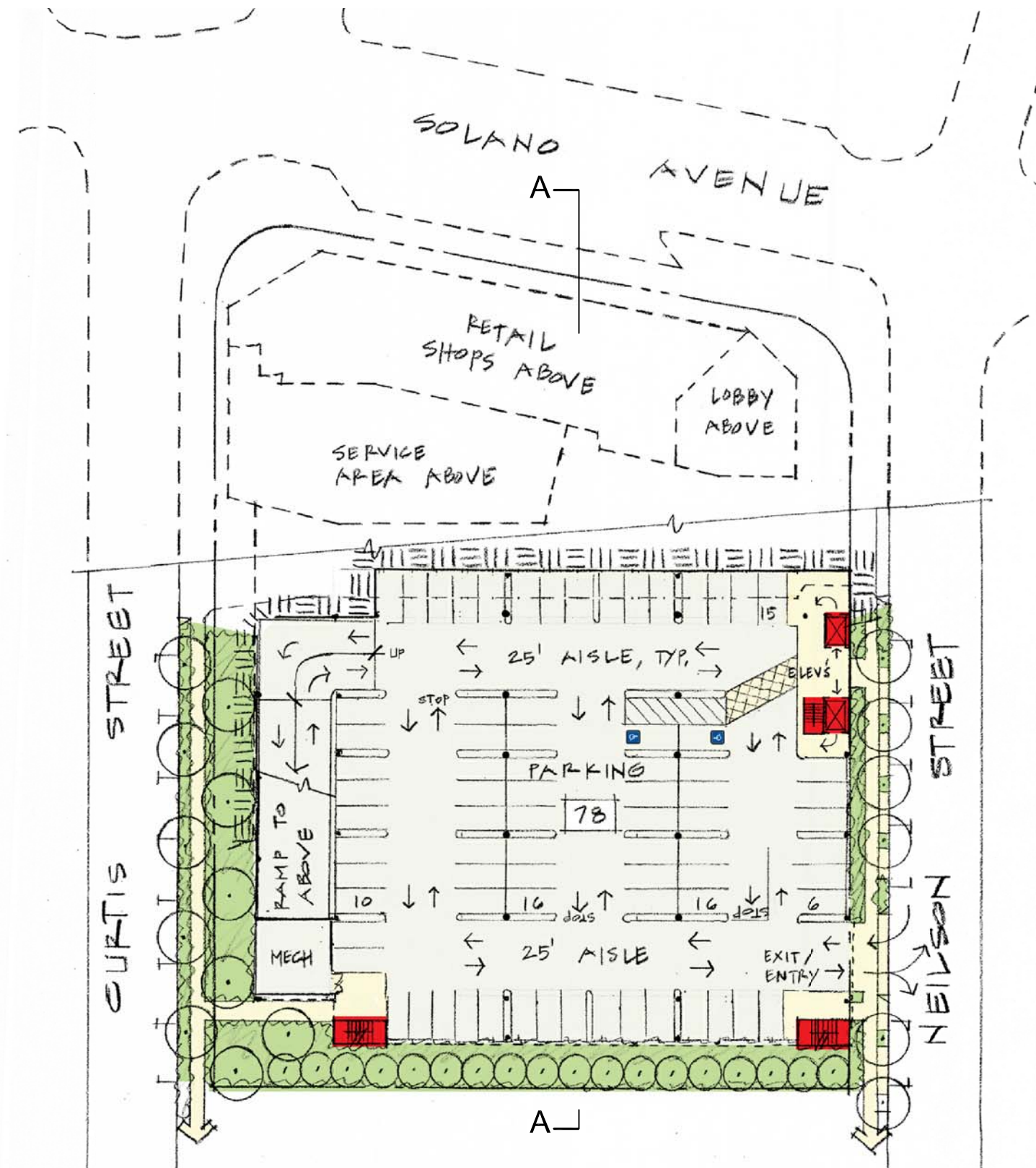
COPYRIGHT © 2011



SGPA ARCHITECTURE AND PLANNING
200 Pine Street, Studio 500 San Francisco, CA 94104 p. 415.963.0131
www.sgpa.com



GARAGE LEVEL @ STREET
(+128')



LOWER GARAGE LEVEL
(+114'-6")



SITE PLAN - G.2
FLOOR PLAN
GARAGE LEVELS (+114'-6"/ +128')
SCALE: 1" = 50'-0"

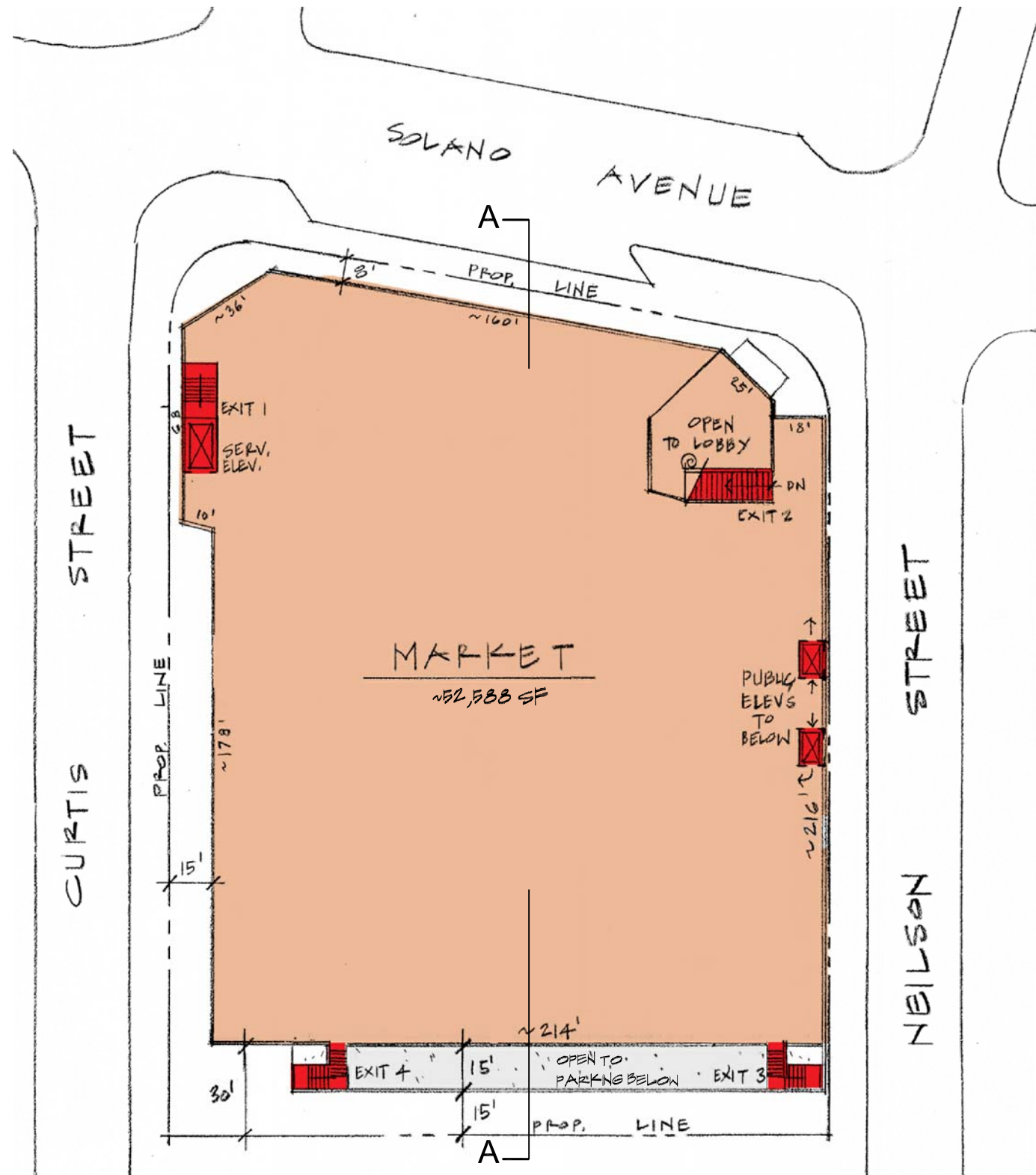
SAFeway STORE - #2869

1500 SOLANO AVENUE
ALBANY ■ CALIFORNIA

DATE: 2011-03-09
REVISED:
PROJECT NO.: 20916-P01
COPYRIGHT © 2011



SGPA ARCHITECTURE AND PLANNING
200 Pine Street, Studio 500 San Francisco, CA 94104 p. 415.963.0131
www.sgpa.com



SAFeway SALES FLOOR PLAN
(+146')

PROJECT INFORMATION FOR PROPOSED PLAN
SAFeway STORE #2869

RETAIL:	
Reference:	Building Area:
Retail Shops	7,300 SF
Safeway	52,588 SF
Safeway Mezz	3,523 SF
TOTAL RETAIL AREA:	63,411 SF

PARKING:	
TOTAL RETAIL AREA:	63,411 SF
*CITY OF ALBANY DEDUCTION	-1,500 SF
TOTAL:	61,911 SF

PARKING REQUIRED:	(1 SP/ 400 SF)	155 SP
PARKING PROVIDED:		155 SP

*NOTE:
PER CITY ZONING ORDINANCE 20.28.040B.2
THE CALCULATION OF THE OFF-STREET PARKING REQUIREMENT SHALL INCLUDE A REDUCTION OF THE GROSS BUILDING FLOOR AREA BY UP TO 1,500 SF OF GROUND FLOOR RETAIL AREA.



SITE PLAN - G.2
FLOOR PLAN (+146')
SAFeway SALES FLOOR
SCALE: 1" = 50'-0"

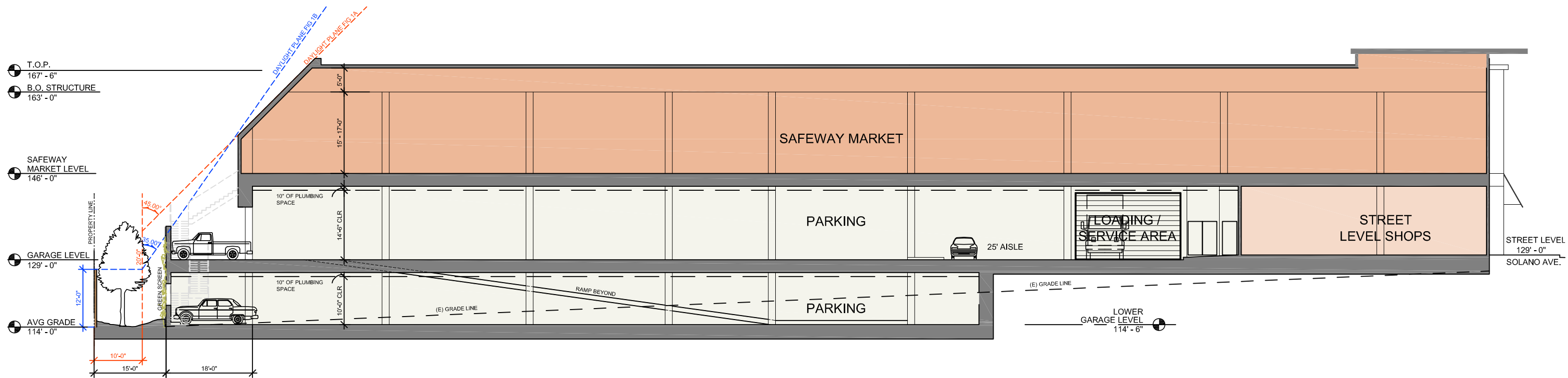
SAFeway STORE - #2869

1500 SOLANO AVENUE
ALBANY ■ CALIFORNIA

DATE: 2011-03-02
REVISED:
PROJECT NO.: 20916-P01
COPYRIGHT © 2011



SGPA ARCHITECTURE AND PLANNING
200 Pine Street, Studio 500 San Francisco, CA 94104 p. 415.983.0131
www.sgpa.com



SECTION A-A

SITE PLAN - G.2
 DAY LIGHT PLANE
 SECTIONS
 SCALE: 1" = 20'-0"

SAFEWAY STORE - #2869

1500 SOLANO AVENUE
 ALBANY ■ CALIFORNIA

DATE: 2011-03-09

REVISED:

PROJECT NO.: 20916-P01

COPYRIGHT © 2011



SGPA ARCHITECTURE AND PLANNING
 200 Pine Street, Studio 500 San Francisco, CA 94104 p. 415.963.0131
 www.sgpa.com

