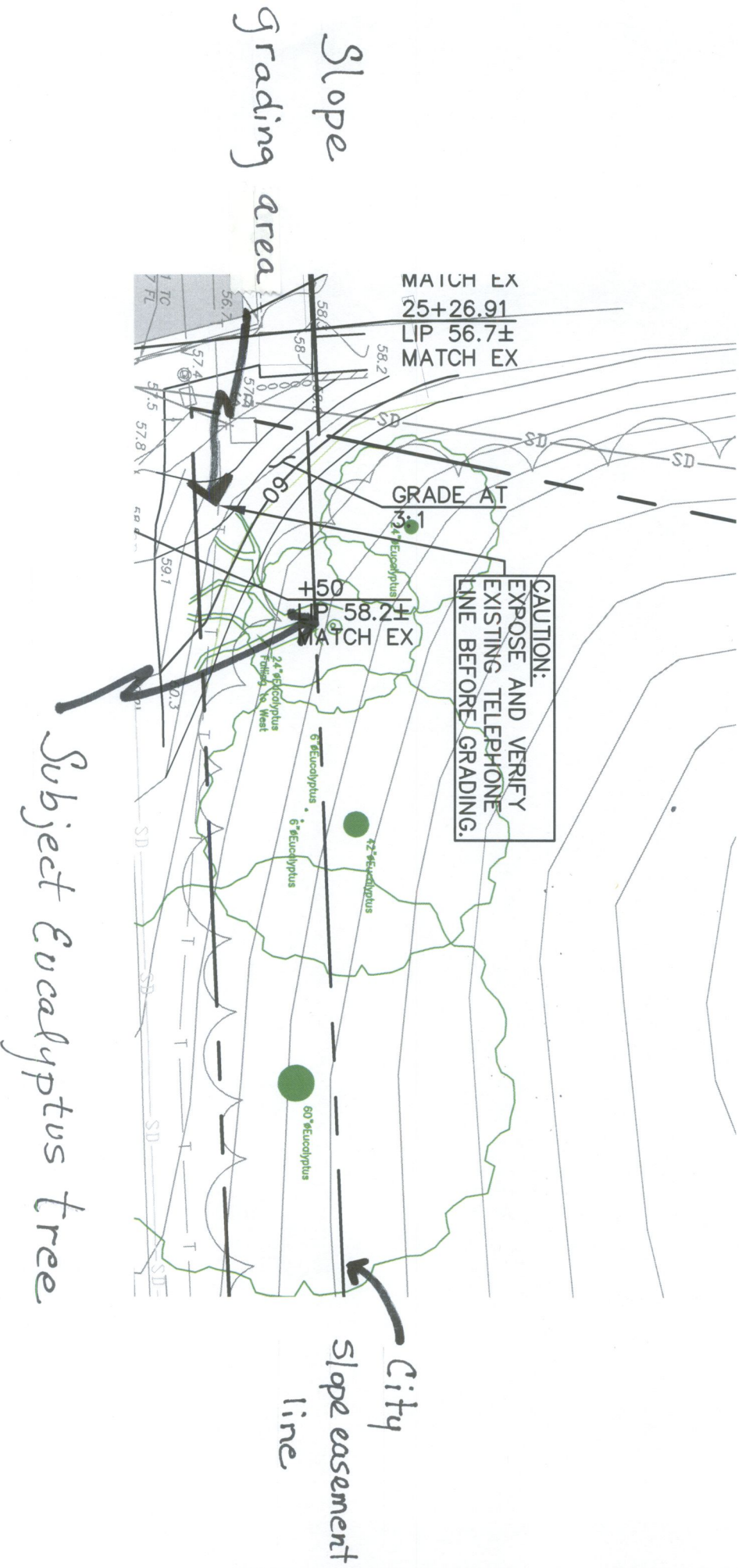
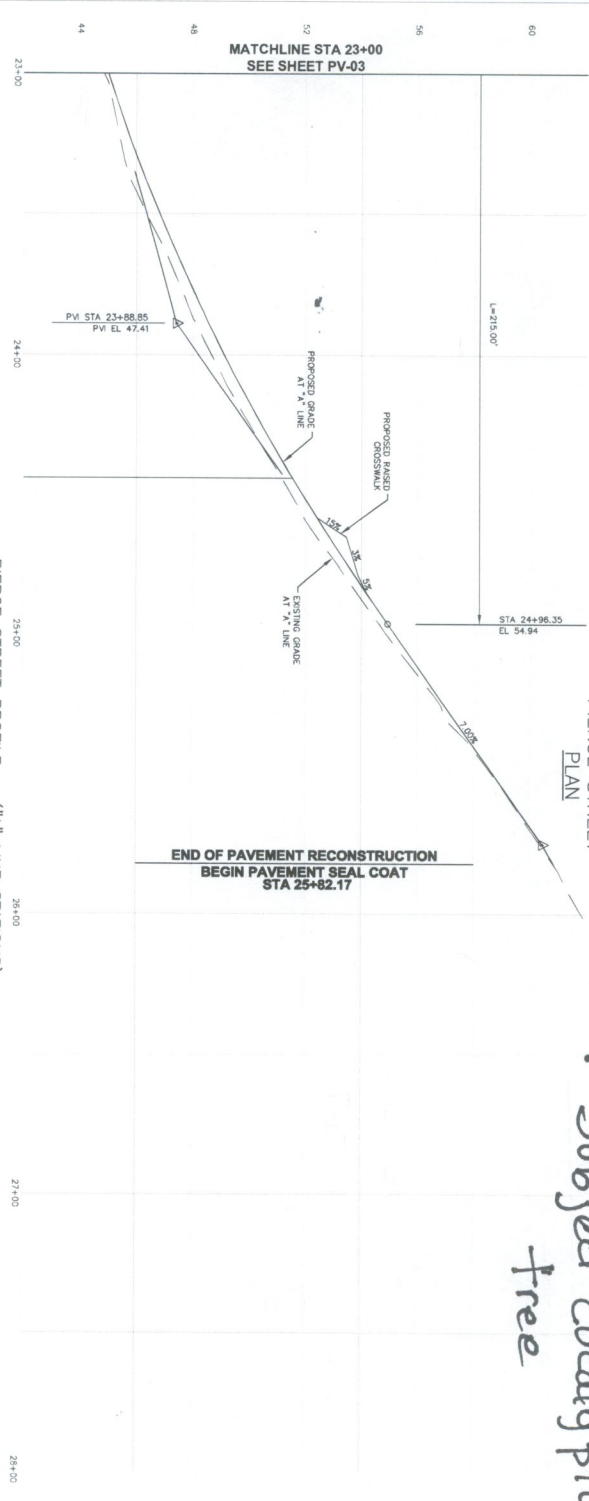
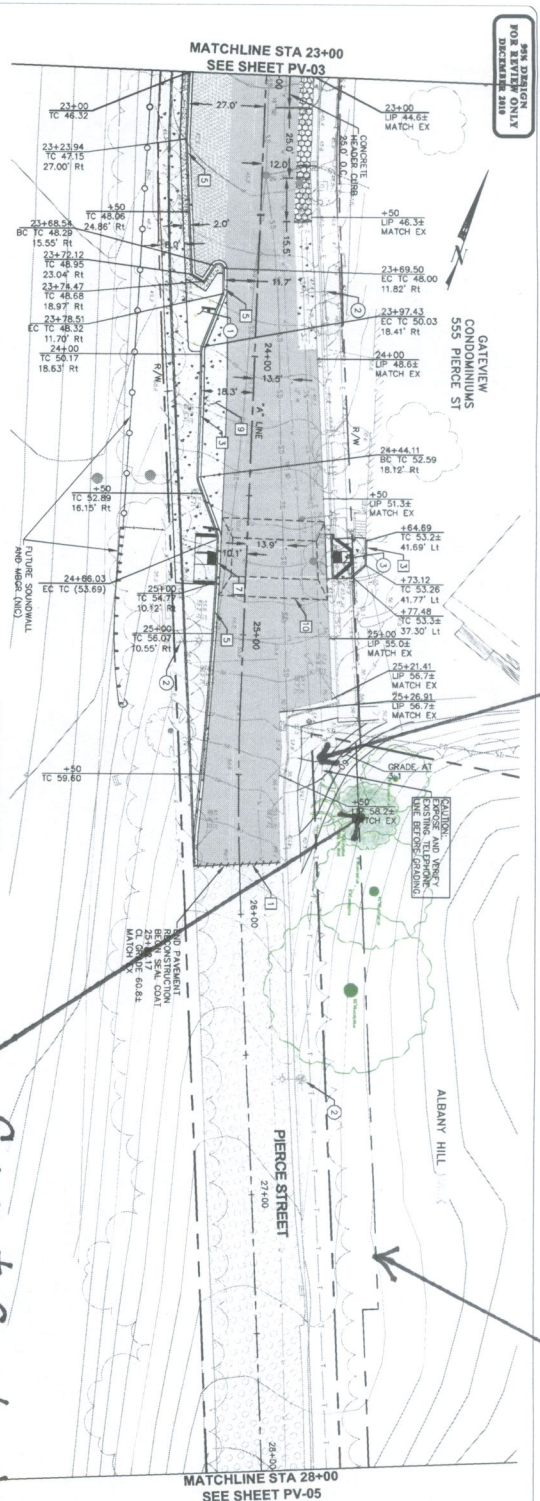


Exhibit A



Slope grading area  
City Slope Easement line



Subject Eucalyptus free

LEGEND:

- 6" HMAc PAVEMENT
- 1.5" AGGREGATE BASE (CLASS II)
- 6" PERVIOUS CONCRETE PAVEMENT
- 10" AGGREGATE BASE (SEE CONSTRUCTION DETAIL SHEET DT-02)
- 3.5" HMAc PAVEMENT
- 8" AGGREGATE BASE (CLASS II)
- 5.5" GRIND AND 5.5" ASPHALT OVERLAY
- SLURRY SEAL
- LANDSCAPE AREA
- NEW CONCRETE SIDEWALK OR BUS PAD
- SAWTOOTH LINE
- SOUNDWALL (NIC)
- PROTECTED TC AT DRIVEWAYS & CURB RAMPS
- ELEV. (XXX.X)
- CHAIN LINK FENCE (NIC)

CONSTRUCTION NOTES:

- 1 SAWTOOTH PAVEMENT AND CONFORM TO EXISTING GRADE
- 2 SAWTOOTH SIDEWALK AT WEAKENED PLANE JUNCT AND MATCH NEW SIDEWALK TO EXISTING GRADE
- 3 CONSTRUCT SIDEWALK AND CURB PER CITY STANDARD DETAIL ST 1
- 4 CONSTRUCT SIDEWALK PER CITY STANDARD DETAIL ST 2
- 5 CONSTRUCT TYPE ST-9M CURB AND GUTTER PER CONTRA COSTA COUNTY STANDARD DETAIL CAVIT.
- 6 CONSTRUCT CURB RAMP PER CALTRANS STANDARD DETAIL ABA4, CASE A, WITH DETECTABLE WARNING SURFACE (SEE OR-SERIES SHEETS FOR CURB RAMP DESIGN DETAILS)
- 7 CONSTRUCT CURB RAMP PER CALTRANS STANDARD DETAIL OR-SERIES SHEETS FOR CURB RAMP DESIGN DETAILS (SEE ABA4, CASE G, WITH DETECTABLE WARNING SURFACE (SEE OR-SERIES SHEETS FOR CURB RAMP DESIGN DETAILS))
- 8 CONSTRUCT CURB RAMP PER CALTRANS STANDARD DETAIL ABA4, CASE G, WITH DETECTABLE WARNING SURFACE (SEE OR-SERIES SHEETS FOR CURB RAMP DESIGN DETAILS)
- 9 CONSTRUCT BUS PAD PER DETAIL SHOWN ON SHEET DT-02
- 10 SEE SHEET DT-01 FOR RAISED CROSSWALK DETAILS

NOTES:

- 1 SEE IS-SERIES SHEETS FOR LANDSCAPING PLANS.
- 2 SEE SL-SERIES SHEETS FOR STREET LIGHTING PLANS.
- 3 SEE OR-SERIES SHEETS FOR CURB RETURN PLAN
- 4 SEE OR-SERIES SHEETS FOR MARKING
- 5 MARKING PLANS SHEETS FOR SPACING AND PAVEMENT
- 6 AT SAWTOOTH LOCATIONS, PROVIDE LAP JOINT BETWEEN NEW STREET SECTION AND EXISTING STREET SECTION
- 7 ALL STATION CALL OUTS REFERENCE
- 8 SEE CITY STANDARD DETAIL ST 7 FOR LEGEND AND NOTES FOR SIDEWALKS, DRIVEWAYS, AND CURB AND GUTTER
- 9 GRAPHIC SCALE



DATE: \_\_\_\_\_ MARK: \_\_\_\_\_ REVISION: \_\_\_\_\_

DESIGNED BY: DOC  
CHECKED BY: KOT  
APPROVED BY: LMF  
DATE: DECEMBER 17, 2019

PROJECT: PIERCE STREET PAVEMENT REHABILITATION AND BICYCLE/PEDESTRIAN PATH

6130 STOKERIDGE MALL ROAD, SUITE 370  
FREMONT, CA 94538  
TEL: 925.399.4840 FAX: 925.398.4849

REVIEWED FOR GENERAL CONFORMANCE WITH THE STANDARD SPECIFICATIONS AND MUNICIPAL CODE OF THE CITY OF ALBANY  
CITY ENGINEER  
DATE: \_\_\_\_\_

City of Albany  
CONTRACT NO. C09-06  
PIERCE STREET PAVEMENT REHABILITATION AND BICYCLE/PEDESTRIAN PATH  
ALAMEDA COUNTY CALIFORNIA

PLAN AND PROFILE  
STA 23+00 TO STA 28+00  
PV-04

SHEET NO. 14 OF 40