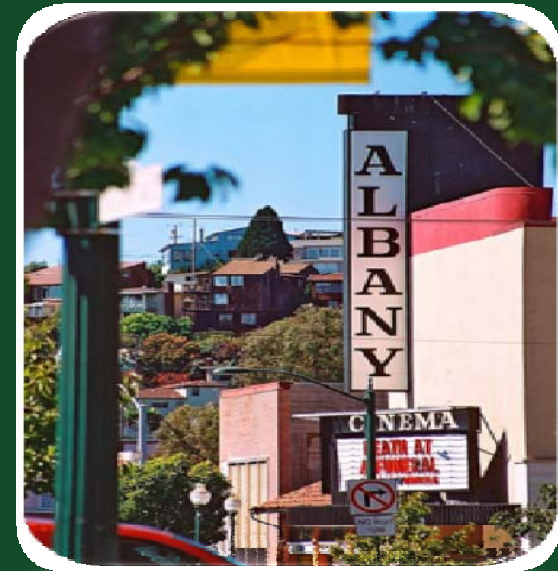


Presentation to the Albany Traffic & Safety Commission & Technical Advisory Group



January 27, 2011

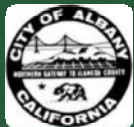
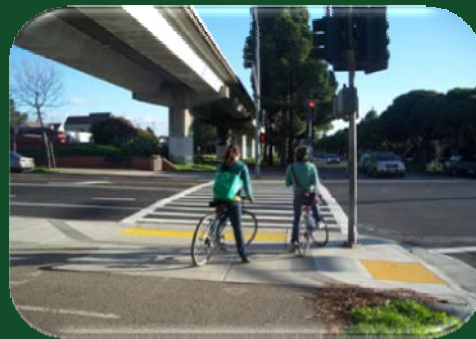


Albany Active Transportation Plan

Introduction to the Plan



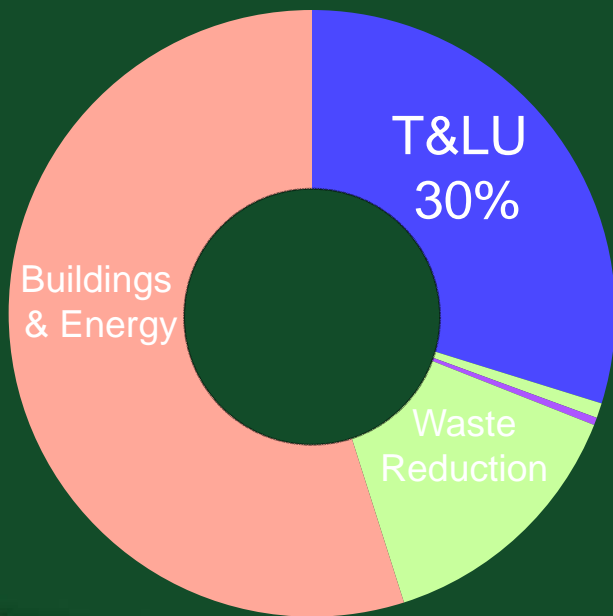
Photo credit: www.albanystrollroll.org



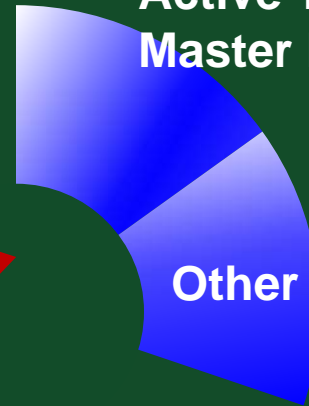
Albany Climate Action Plan – Carbon Reduction Goals

Transportation and Land Use Strategies (T&LU) are projected to provide 30% of the overall reduction in carbon output

Carbon Output Reduction Goals

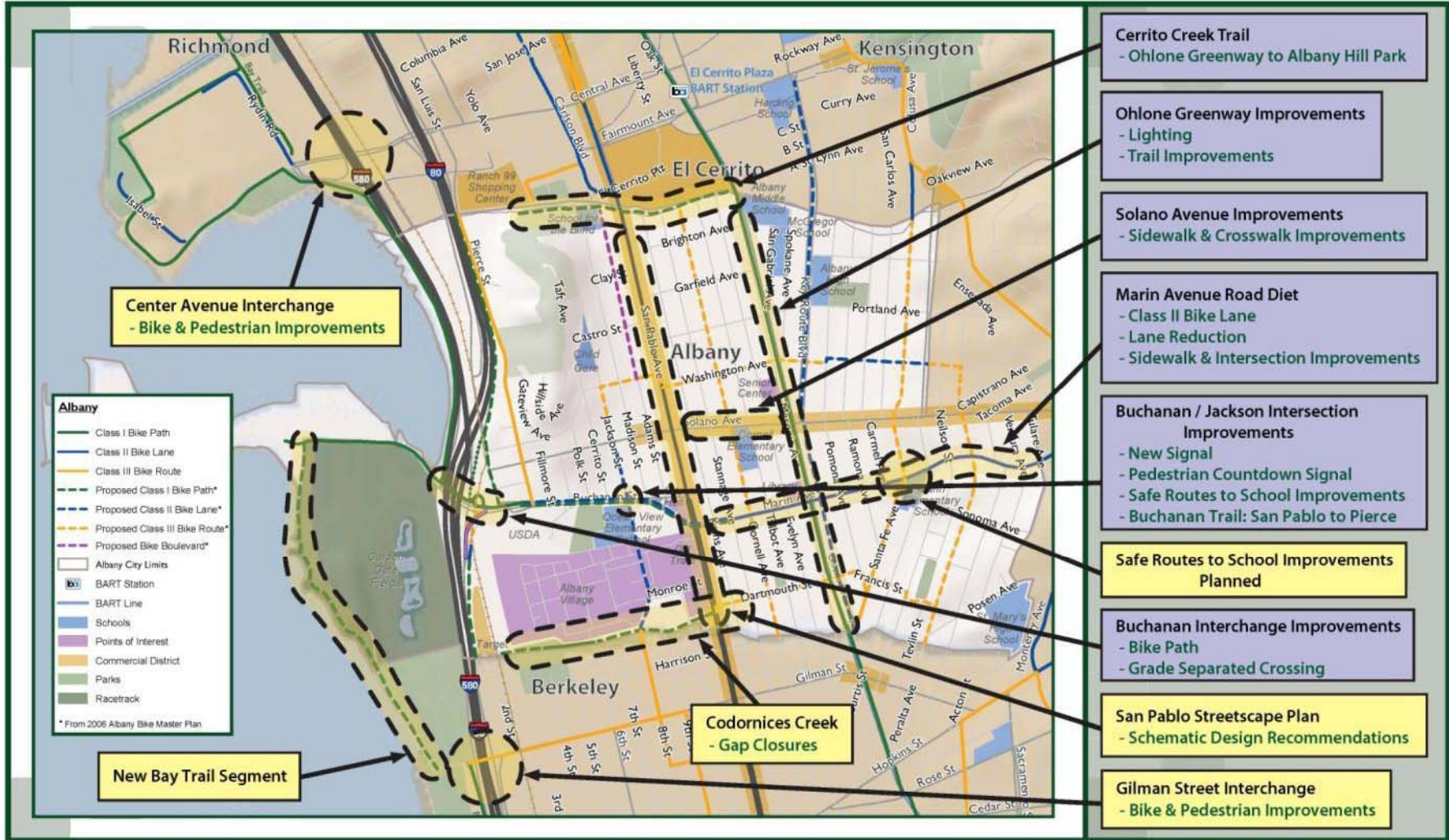


Active Transportation Master Plan = 15% of CAP



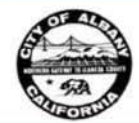
50% of T&LU, or 15% of the total CAP carbon reductions, are expected through implementation of the Active Transportation Master Plan





Recent & On-going City Projects

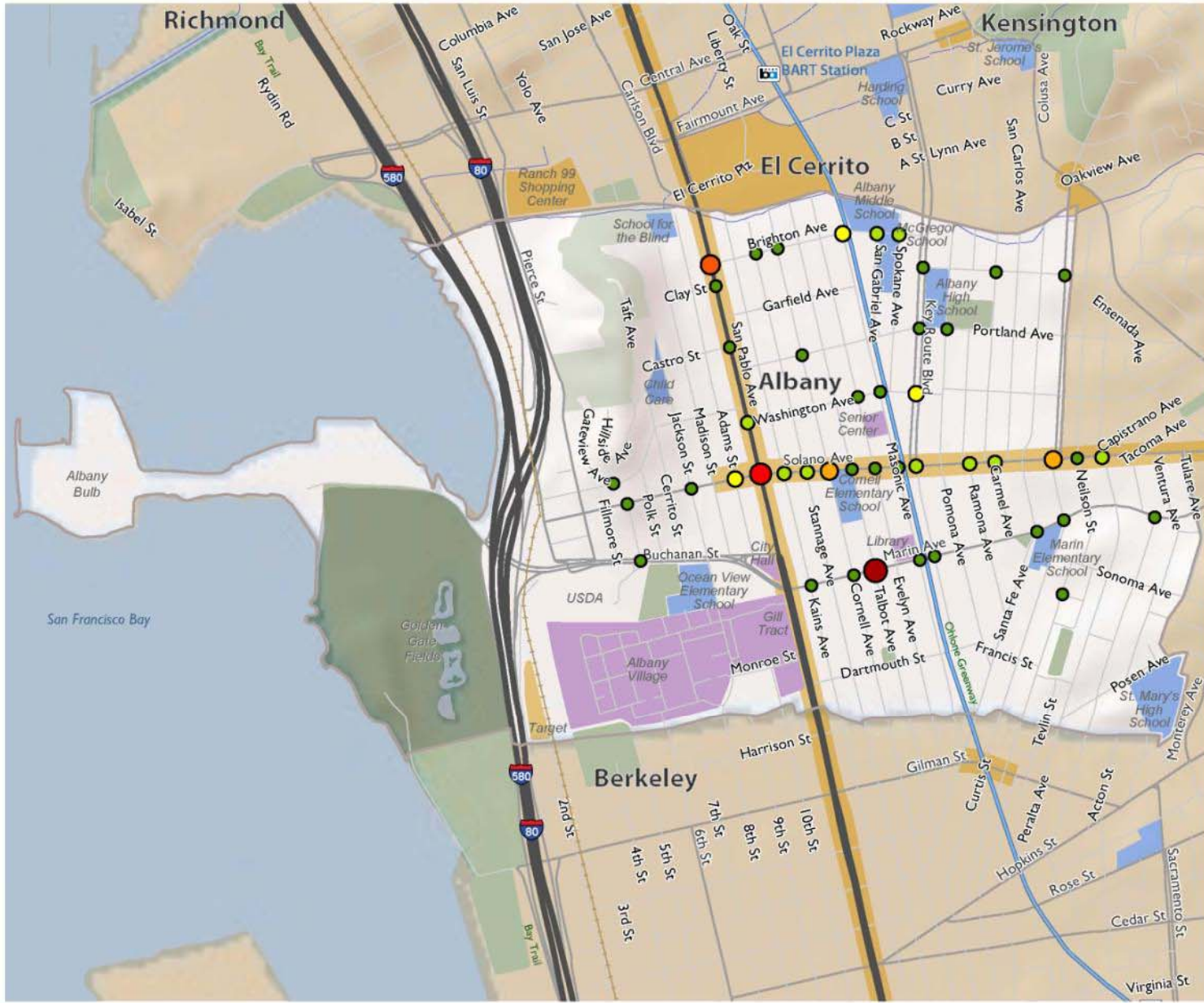
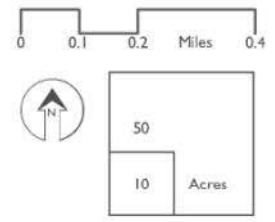
- Completed projects
- On-going projects



Albany

Collisions: Pedestrians

- 1 Pedestrian Injury
- 2 Pedestrian Injuries
- 3 Pedestrian Injuries
- 4 Pedestrian Injuries
- 6 Pedestrian Injuries
- 11 Pedestrian Injuries
- 1 Pedestrian Fatality

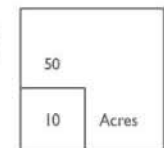
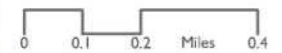


Albany



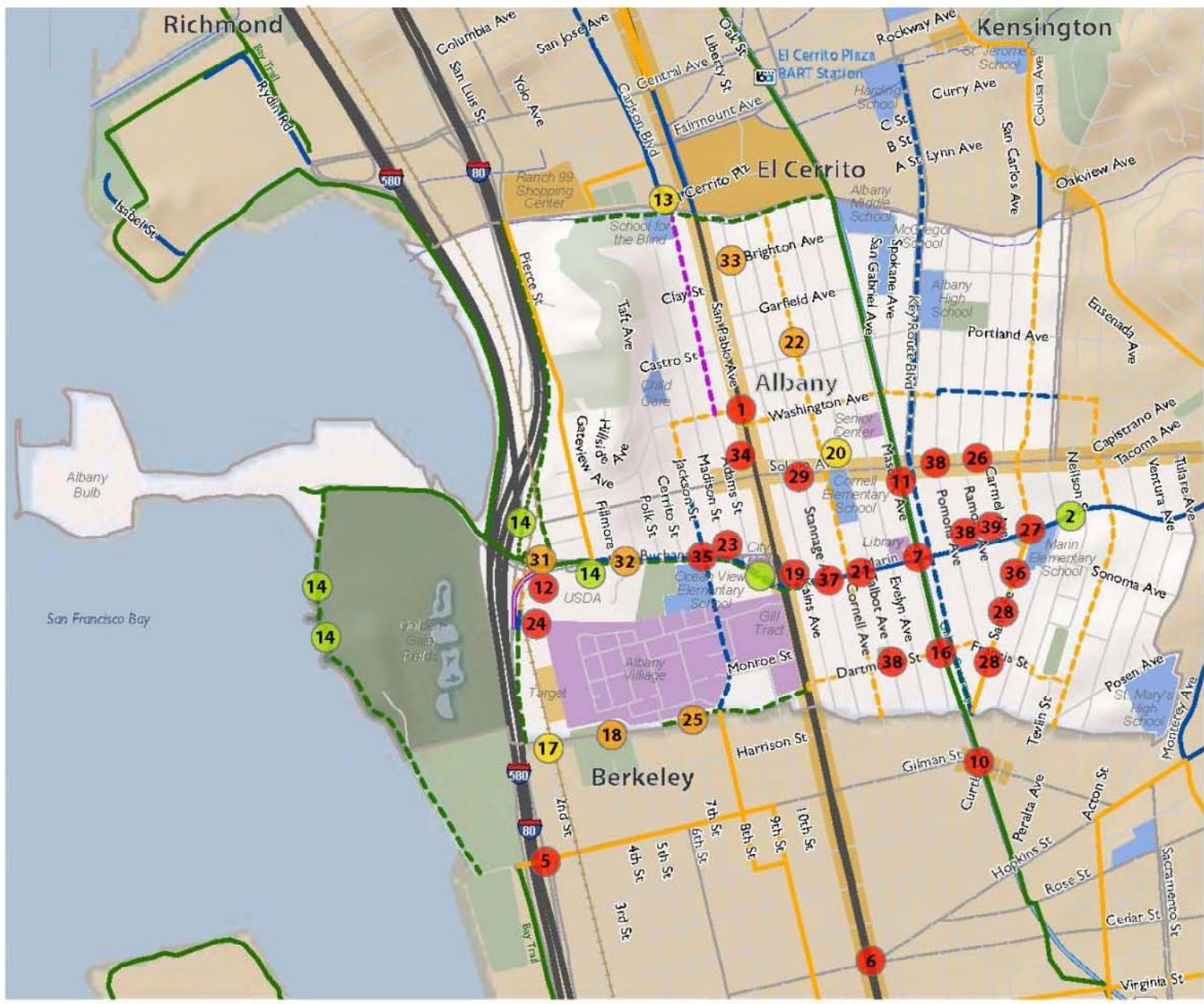
Collisions: Bicyclists

- 1 Bicycle Injury
- 2 Bicycle Injuries
- 3 Bicycle Injuries
- 4 Bicycle Injuries

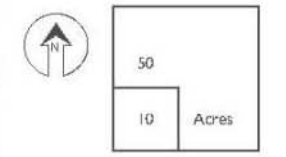
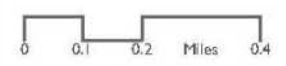


FEHR & PEERS
TRANSPORTATION CONSULTANTS

Albany



- Albany**
- Class I Bike Path
 - Class II Bike Lane
 - Class III Bike Route
 - - - Proposed Class I Bike Path
 - - - Proposed Class II Bike Lane
 - - - Proposed Class III Bike Route
 - - - Proposed Bike Boulevard
 - Albany City Limits
 - BART Station
 - BART Line
 - Schools
 - Points of Interest
 - Commercial District
 - Parks
 - Racetrack



Albany Active Transportation Plan: Public Input



Albany Active Transportation Plan

- What makes a place walkable & bikable?
 - Good Streets
 - Good Intersections
 - Good Crossings
 - Good Access

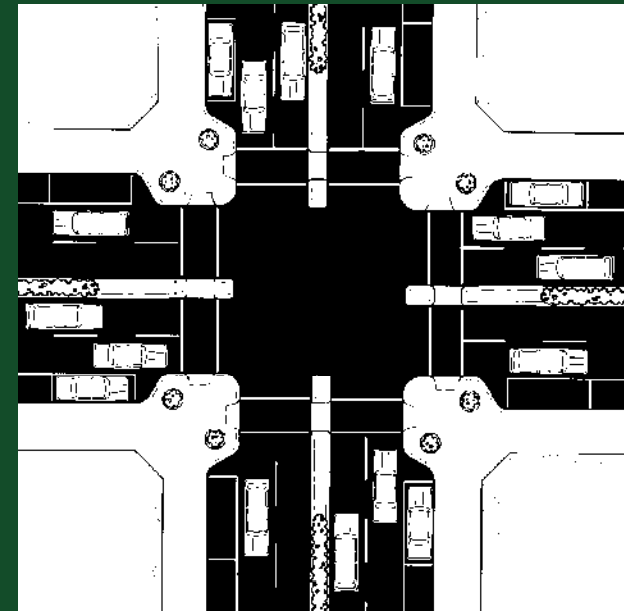


- Include bike accommodations
- Have great sidewalk environments
- Keep lanes narrow
- Use medians whenever practical
- Keep number of lanes to a minimum



Good Intersections

- Are compact
- Use curb extensions
- Have crosswalks on all approaches
- Have short pedestrian crossings



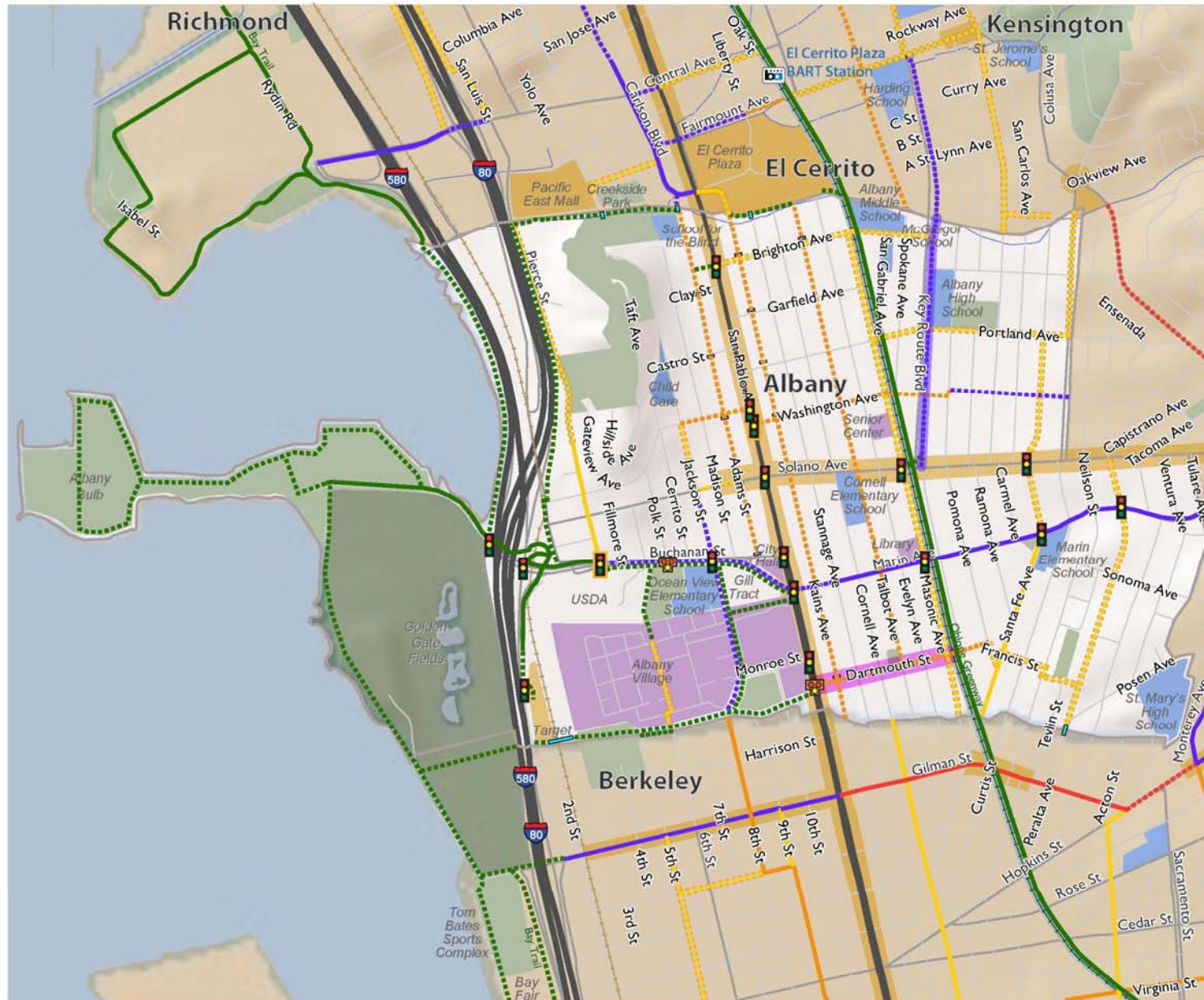
Good Crossings

- Are highly visible
- Are marked and signed
- Use enhancements, where appropriate



- Have street activity
- Are organized
- Are calmed
- Have links to transit
- Have medium to high density land use
- Have grid like street networks
- Have public art





Albany

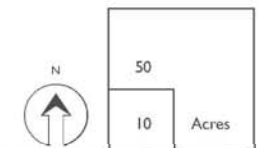
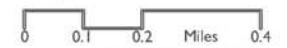
- Albany City Limits
- BART Station
- BART Line
- Schools
- Points of Interest
- Commercial District
- Parks
- Racetrack

Bikeway Type Existing Proposed

- Class I Path
- Class II Lane
- Class II Buffered Lane
- Class II.5 Berkeley Route²
- Class III Boulevard¹
- Class III Route^{2,3}
- Shared Street
- Bridge
- Traffic Signal
- Ped Hybrid Beacon
- Partial Closure

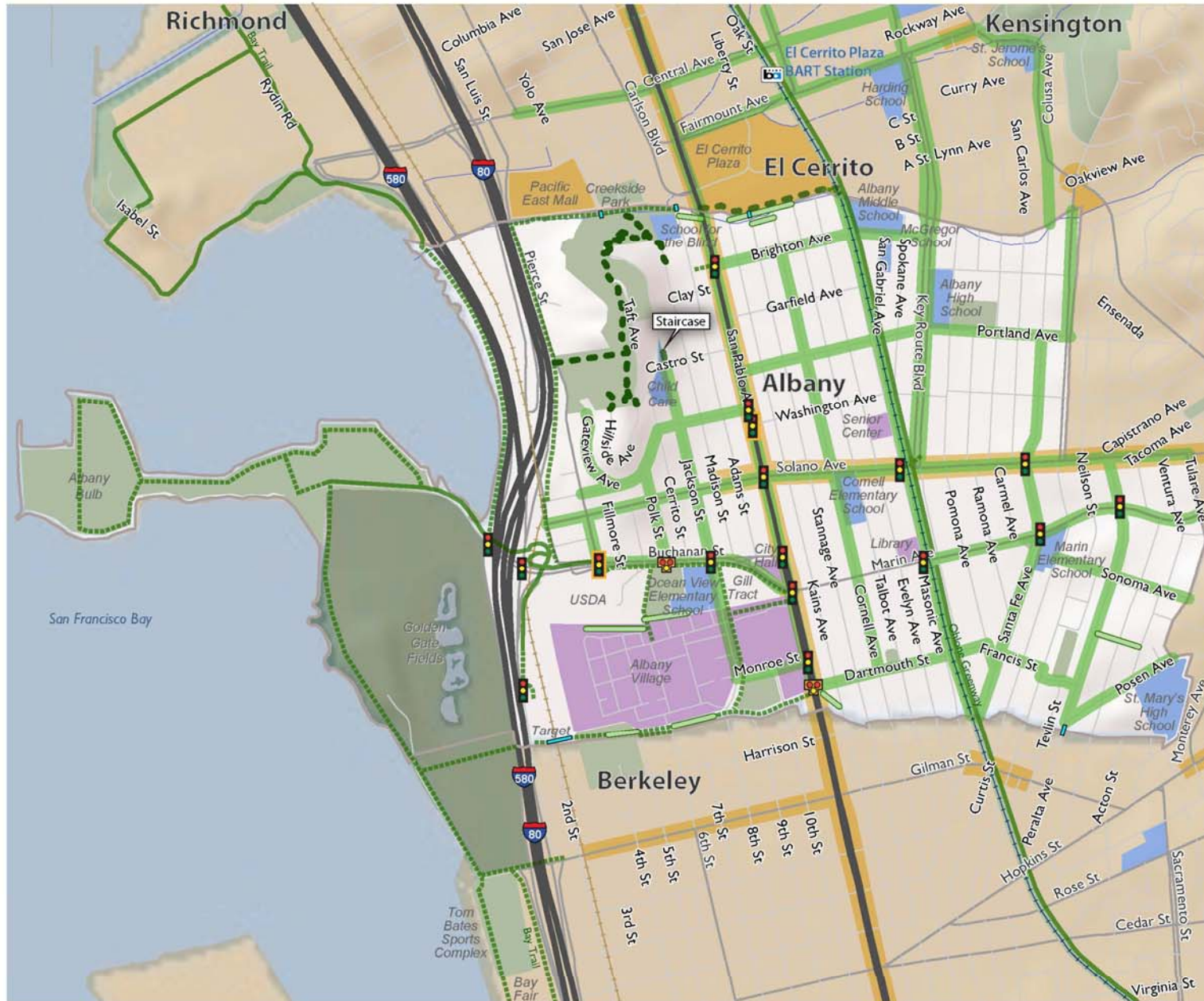
Notes:

1. Bicycle boulevard should be designed with special large "BIKE BLVD" sharrows, special signage, and traffic calming and traffic control devices that give preference to bicyclists.
2. All Class III routes in Albany should be indicated with signage and sharrows. This designation is similar to Berkeley's Class II.5 designation.
3. Camel Street in El Cerrito is a signed-only Class III bicycle route. Other Class III bicycle routes in El Cerrito and shown on the map are treated or proposed to be treated with signage and sharrow markings.



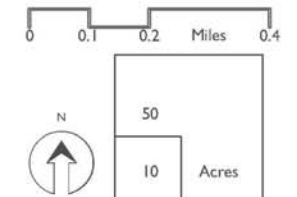
FEHR & PEERS
TRANSPORTATION CONSULTANTS

Proposed Priority Sidewalk & Pathway Network



- Albany**
- Proposed Pedestrian Priority Network
 - - - Class I Shared Use Path (Pedestrian & Bikes Permitted)
 - · · Pedestrian Only Path
 - · · Proposed Class I Shared Use Path (Ped & Bikes Permitted)
 - - - Proposed Pedestrian Only Path
 - Albany City Limits
 - BART Station
 - BART Line
 - Schools
 - Points of Interest
 - Commercial District
 - Parks
 - Racetrack
 - Existing Signal
 - Proposed Signal
 - Proposed Ped Hybrid Beacon
 - Proposed Pedestrian/Bicycle Bridge

Notes:
 1. Location of Creekside trails is not precise.



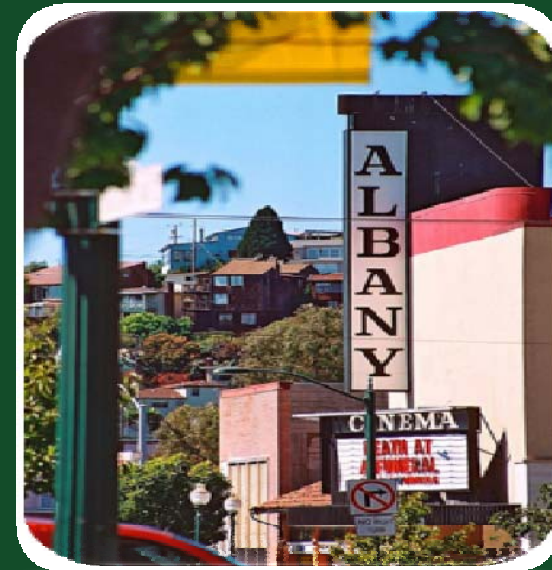
Draft Prioritization

Tier 0 : Underway	Tier 1:Short- Term	Tier 2: Mid-Term	Tiers 3 & 4: Long-Term
Planned and partially funded	High Priority	Medium Priority	Low Priority
Bay Trail	Jackson	Dartmouth	Key Route
Pierce Buchanan Cordornices Creek	Adams Masonic Talbot Solano Kains Ohlone Greenway San Pablo Eastshore	Marin Cerrito Creek Santa Fe Washington	Polk / Buchanan Peralta Portland Francis UC Village/Bay Trail

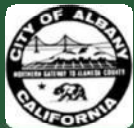
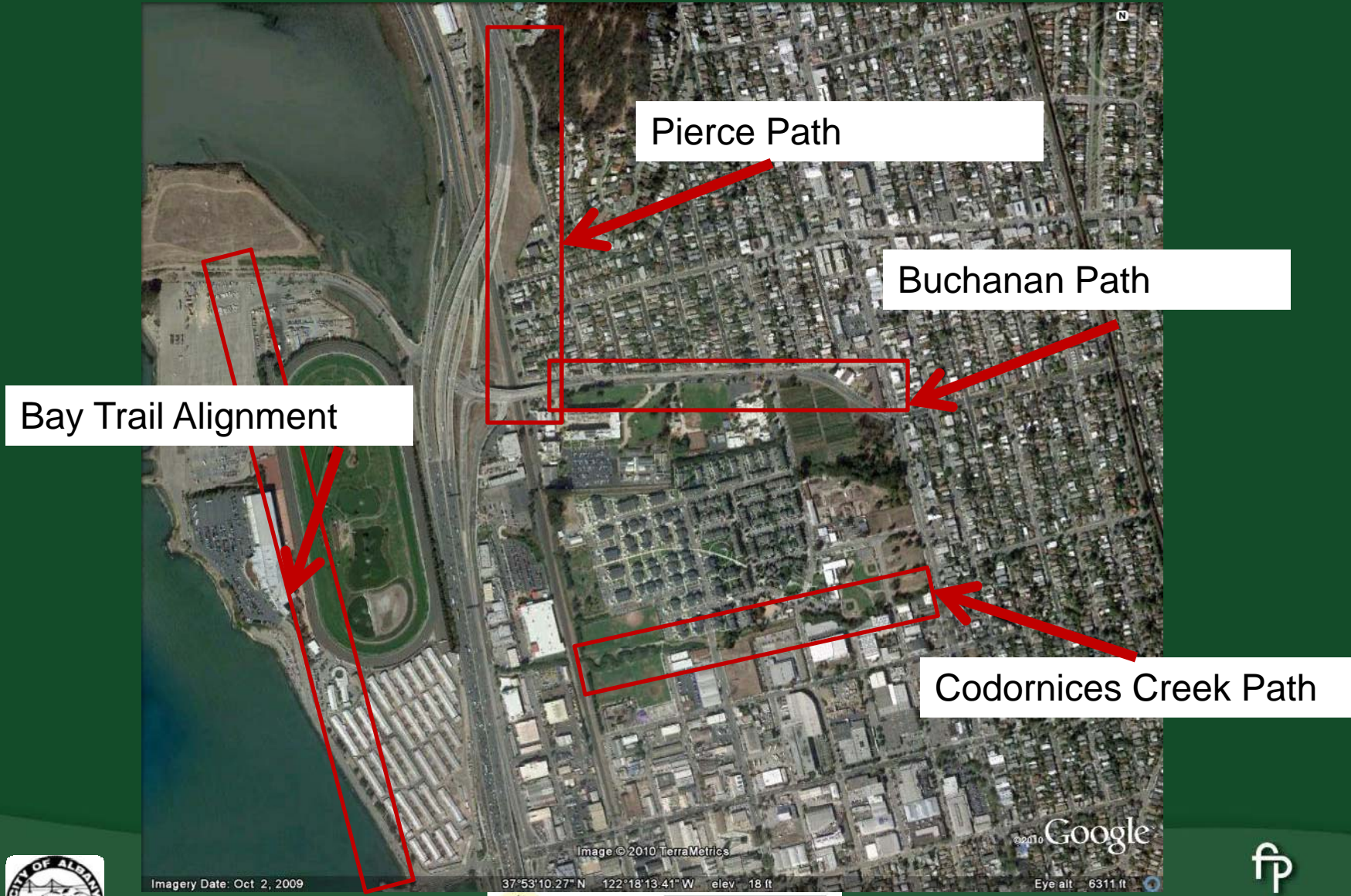


Draft Tier 0 Projects

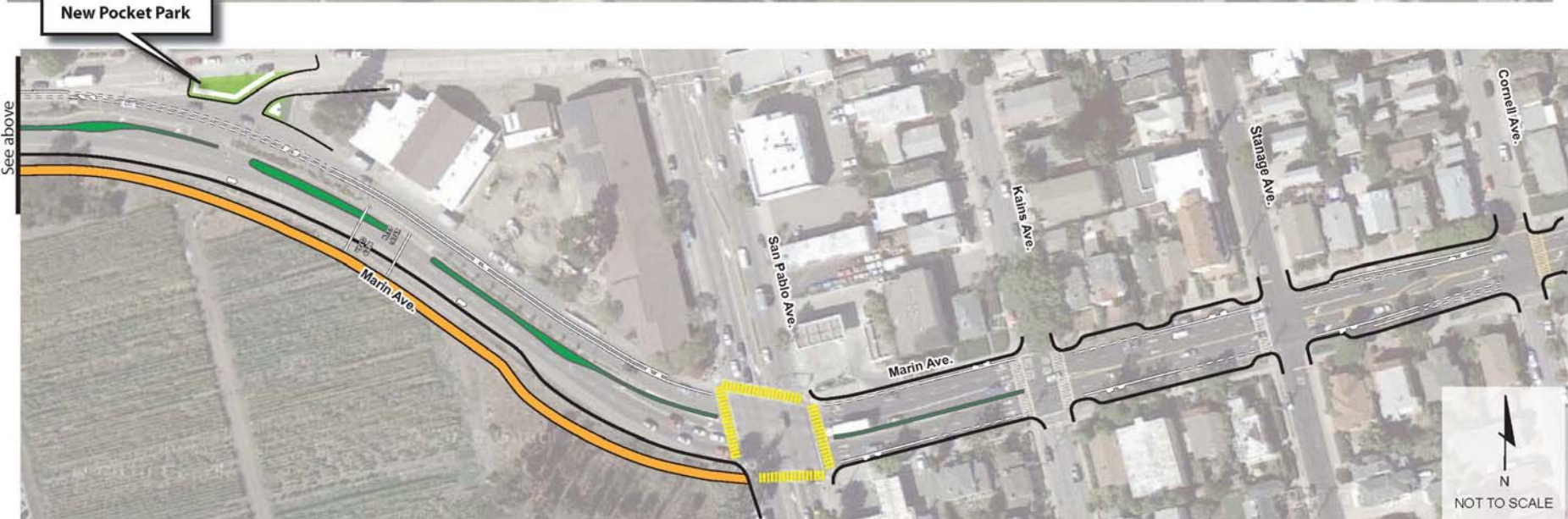
- Funded or partially funded
- Designed or partially designed



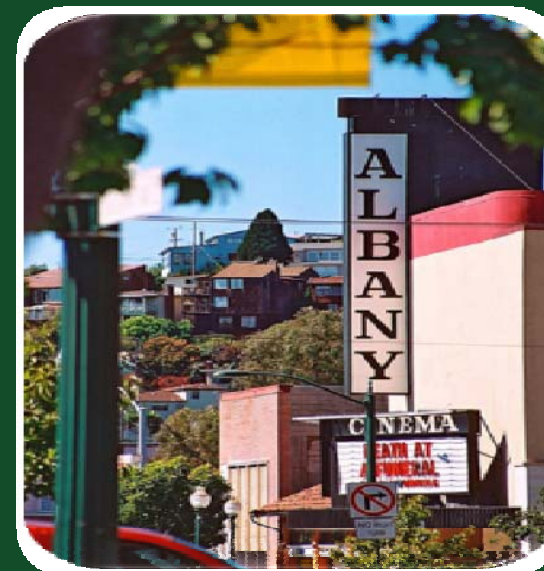
Planned Projects



Buchanan Path and City Hall Pedestrian and Bicycle Improvements



Draft Tier 1 Projects



Jackson Street Safe Routes to School



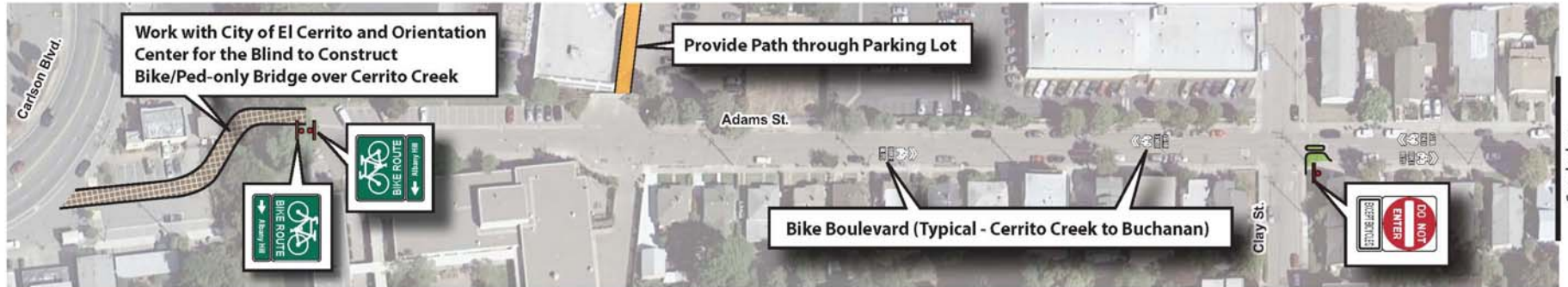
Jackson Street Safe Routes to School



009 37°53'13.72" N 122°17'57.52" W elev 37 ft



Adams Street Bike Route



See below

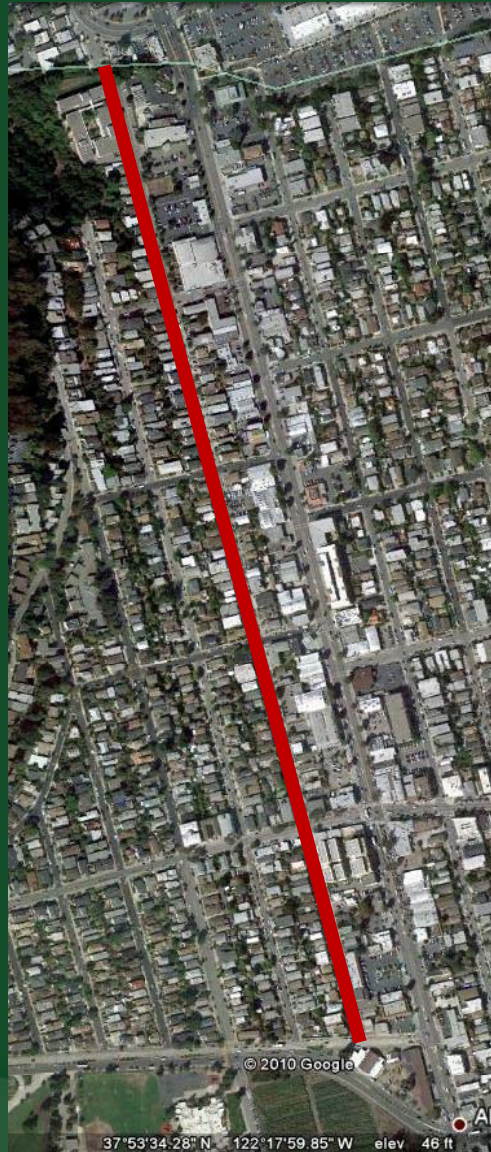


See below



NOT TO SCALE

Adams Street Bike Route



Masonic Avenue Bike Route



See below



See above

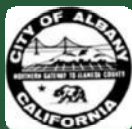
See below



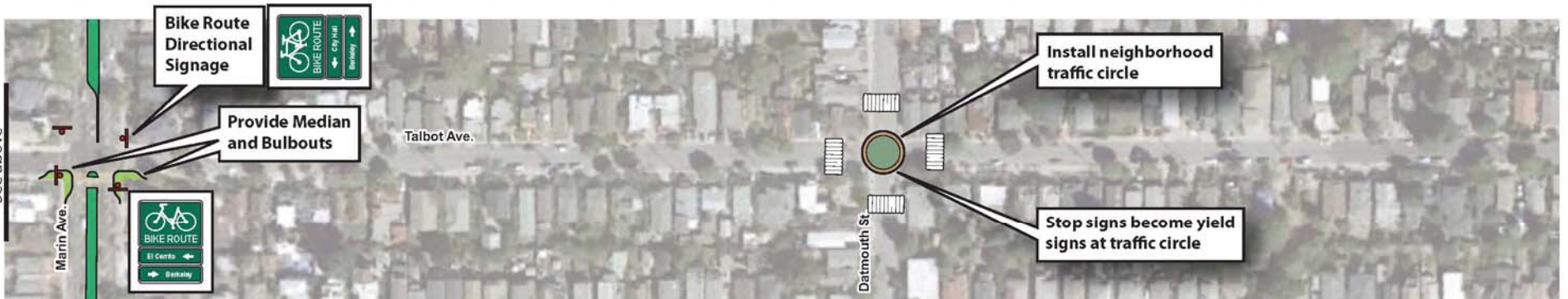
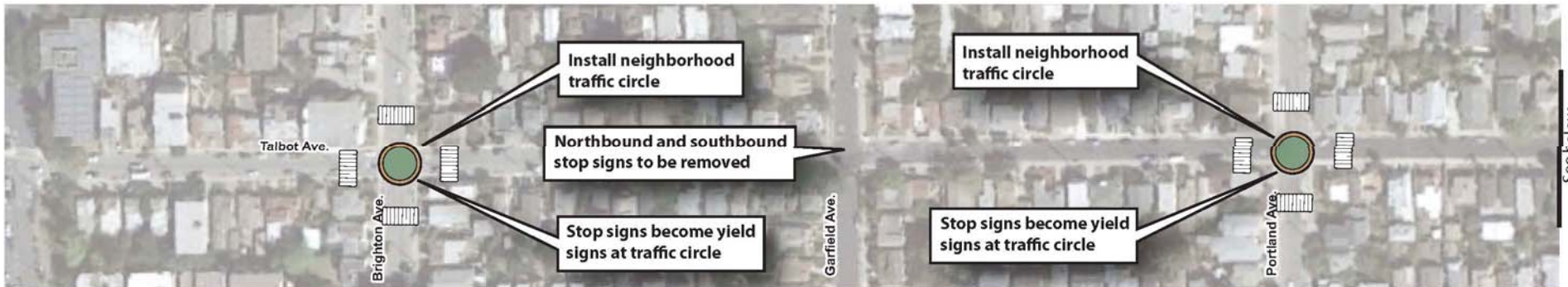
See above



Masonic Avenue Bike Route



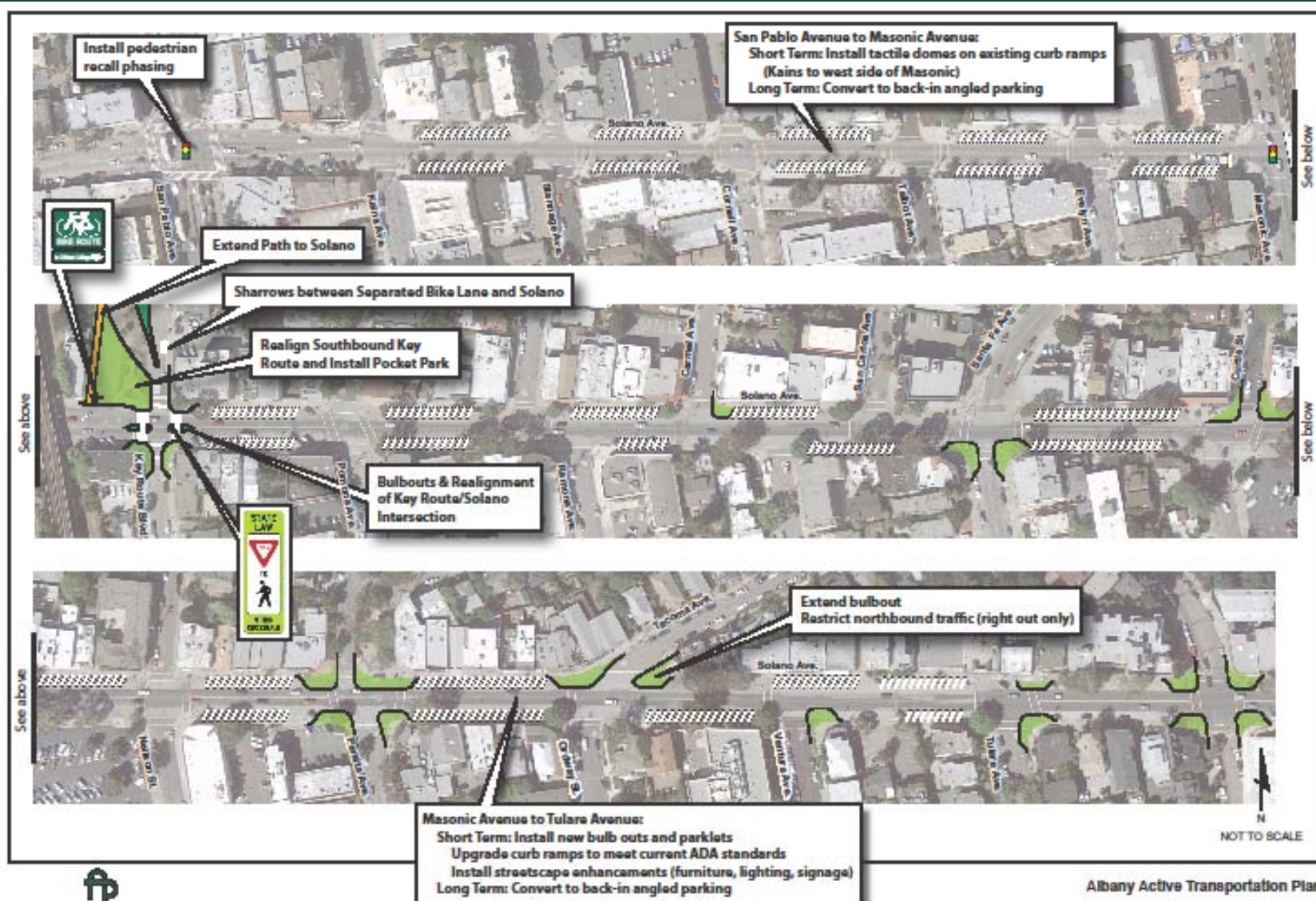
Talbot Avenue Bike Boulevard



Talbot Avenue Bike Boulevard



Solano Avenue Streetscape, Greening & Pedestrian Safety Project

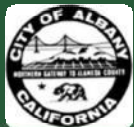


Solano Avenue Streetscape, Greening & Pedestrian Safety Project



R1-6

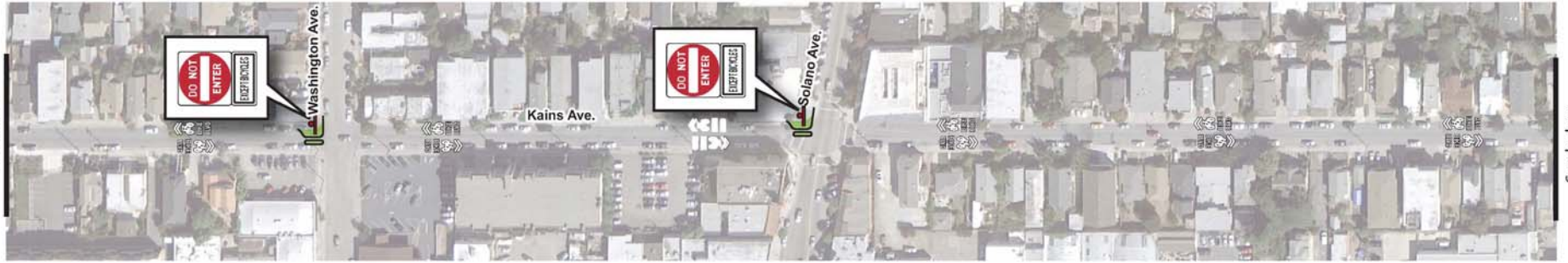
Sign image from the Manual of Traffic Signs <<http://www.trafficign.us/>>
This sign image copyright Richard C. Moeur. All rights reserved.



Kains Avenue Bike Route



See below



See above

See below



See above



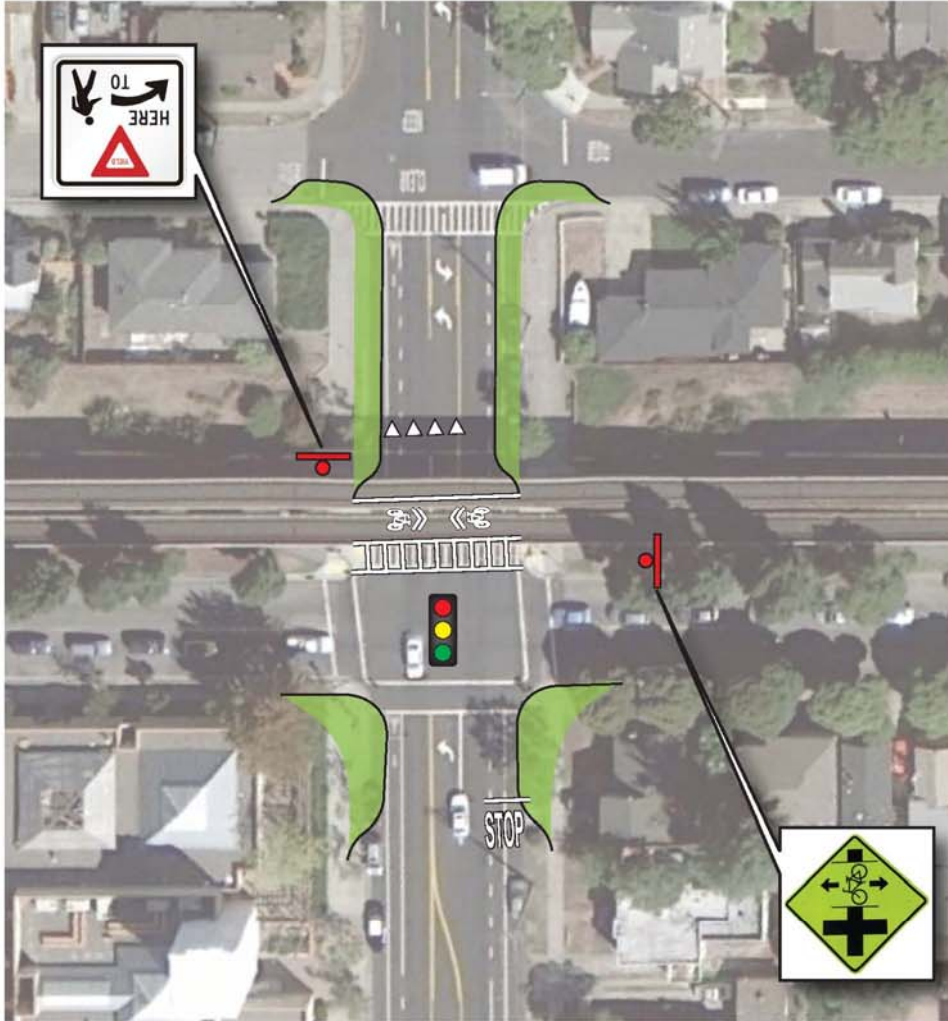
Kains Avenue Bike Route



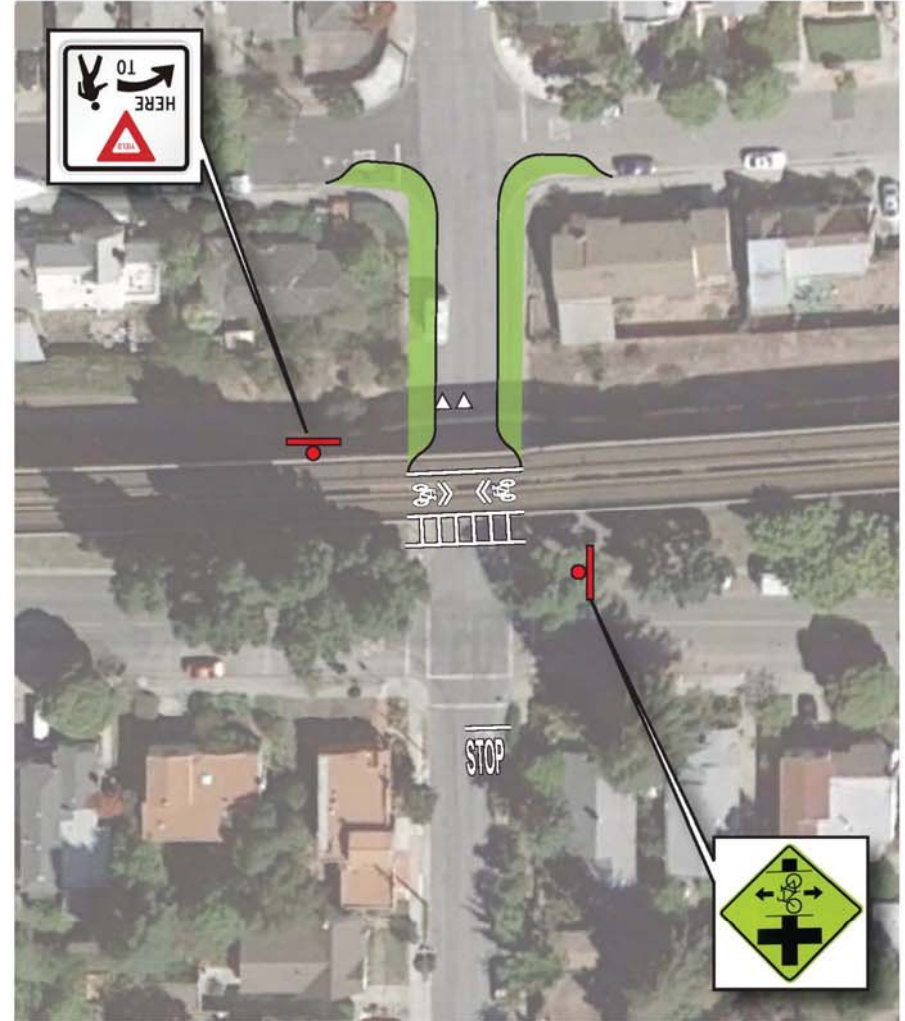
37°53'24.06" N 122°17'43.56" W elev



Ohlone Greenway Crossings



Prototypical Signaled Crossing of Ohlone Greenway

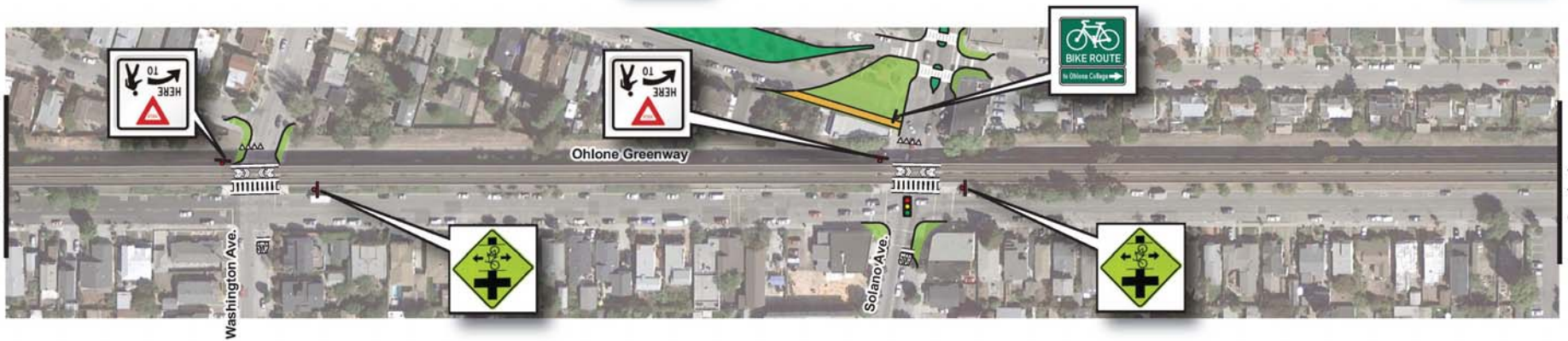


Prototypical Unsignaled Crossing of Ohlone Greenway

Ohlone Greenway Crossings



See below



See above

See below



See above

Ohlone Greenway Crossings



37°53'24.06" N 122°17'43.56" W elev 60 ft



San Pablo Avenue Pedestrian Safety Project



Buchanan Path included as separate project (see project 1)

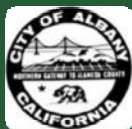
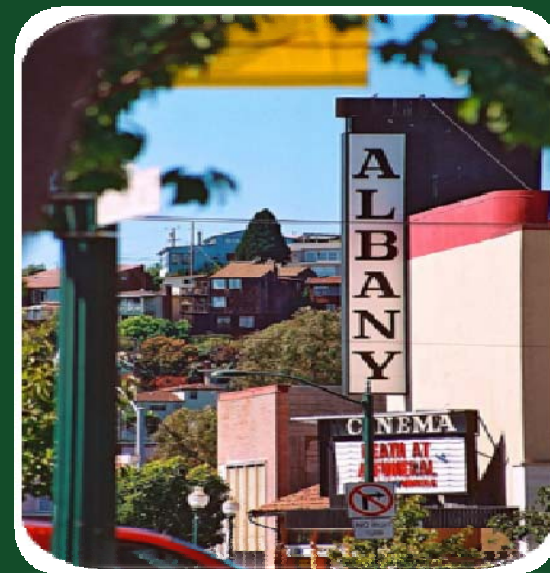
San Pablo Streetscape and Pedestrian Improvements



Eastshore Frontage Road Path



Draft Tier 2 Projects



Marin Ave Pedestrian & Bicycle Enhancements



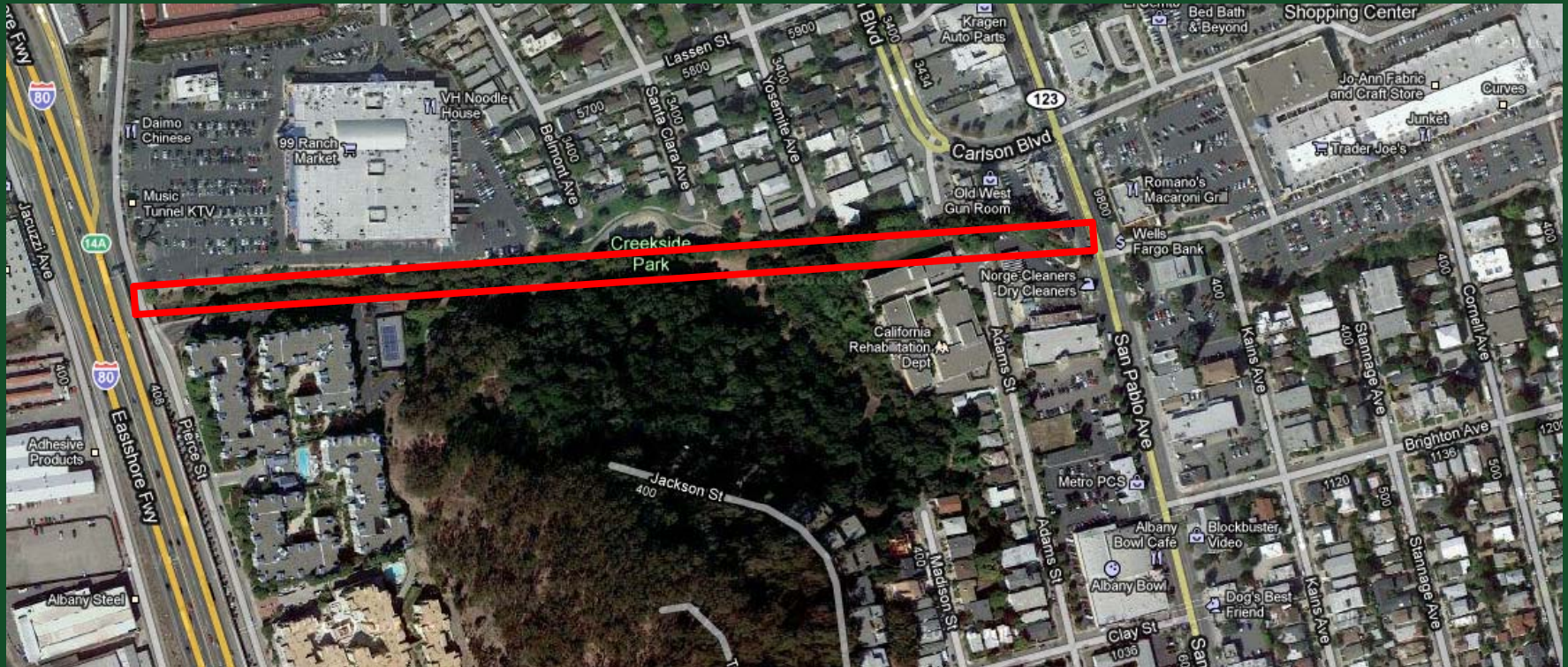
Dartmouth Street Shared Street Concept



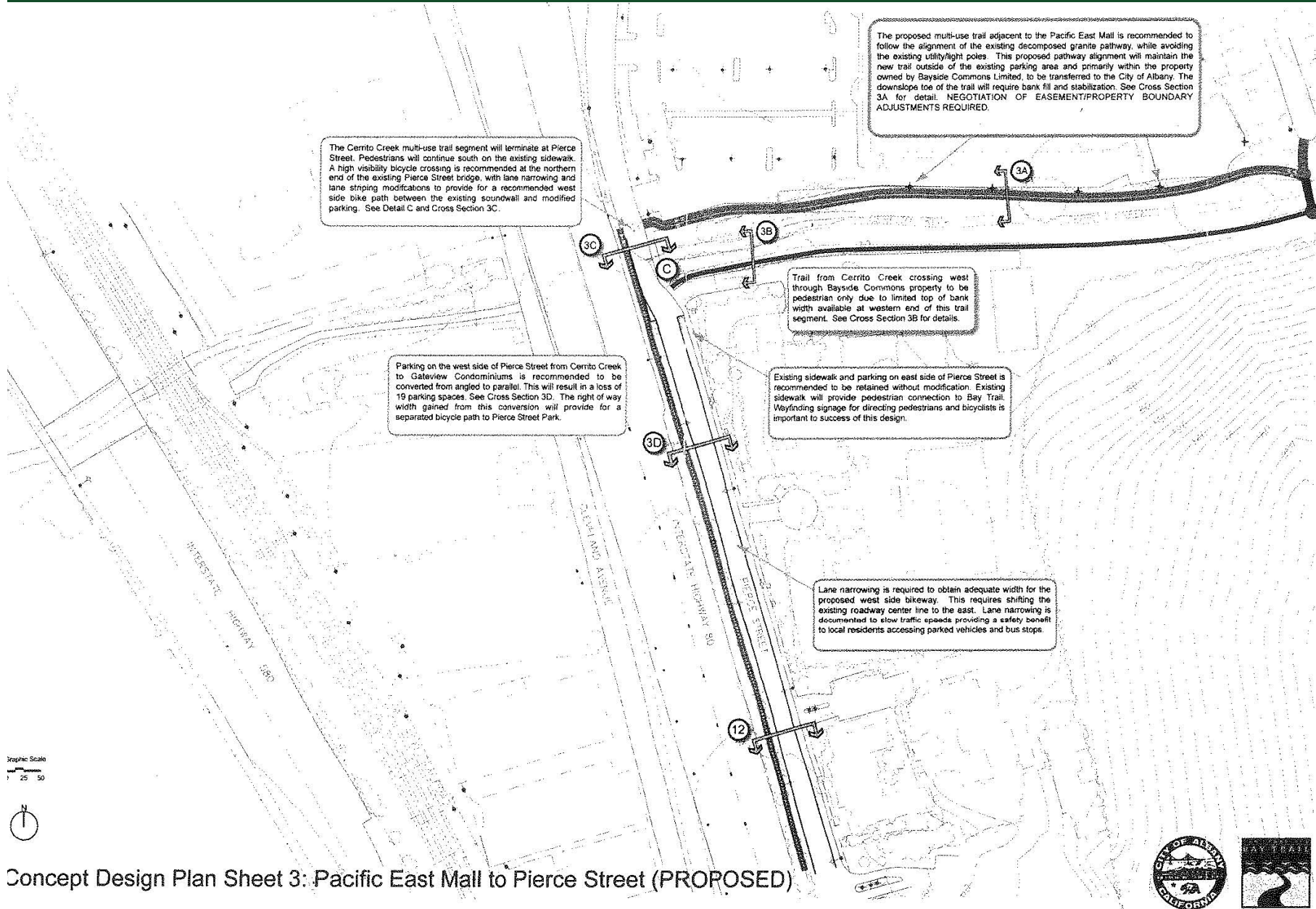
Dartmouth Street Shared Street Concept



Cerrito Creek Path

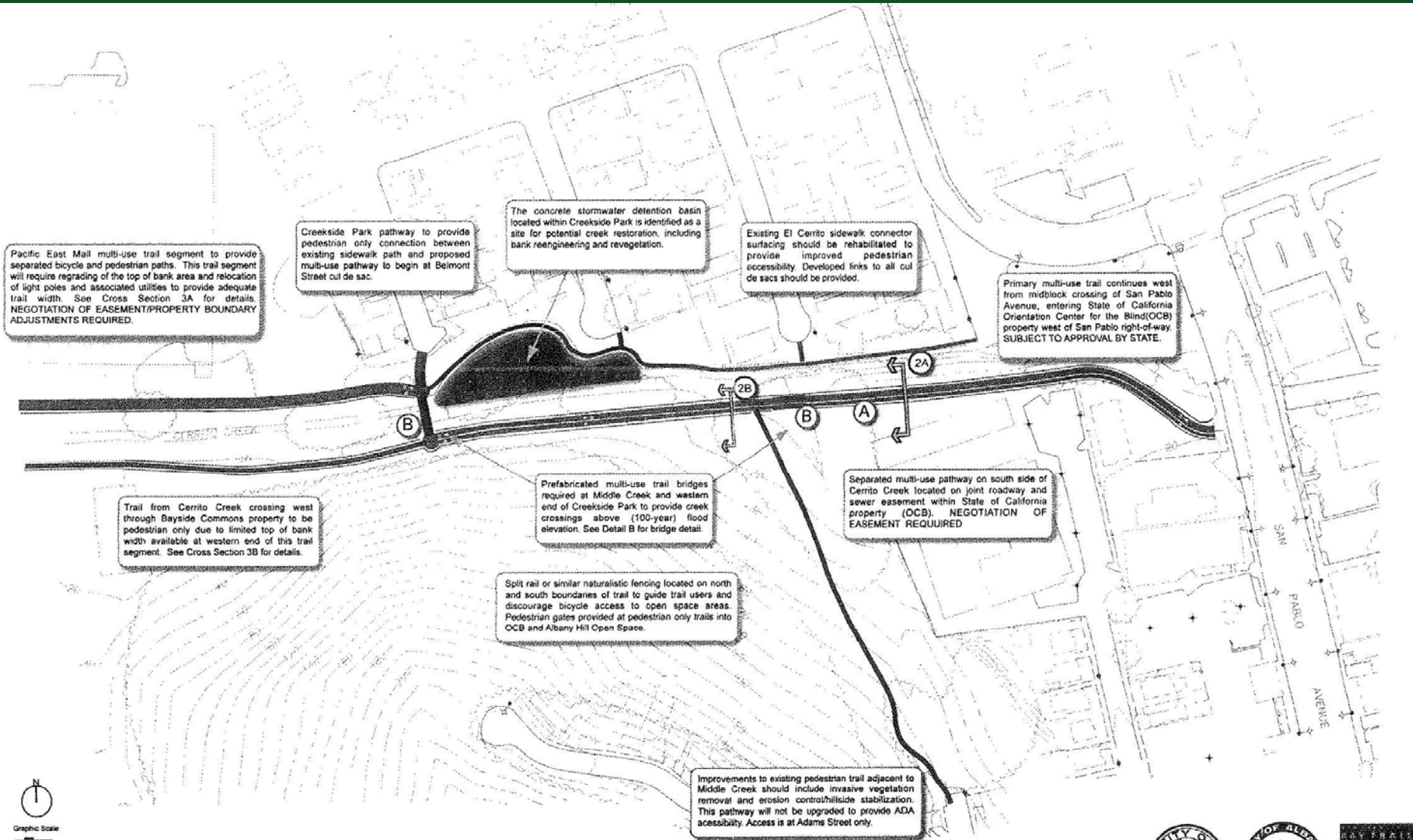


Cerrito Creek Path



Concept Design Plan Sheet 3: Pacific East Mall to Pierce Street (PROPOSED)

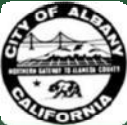
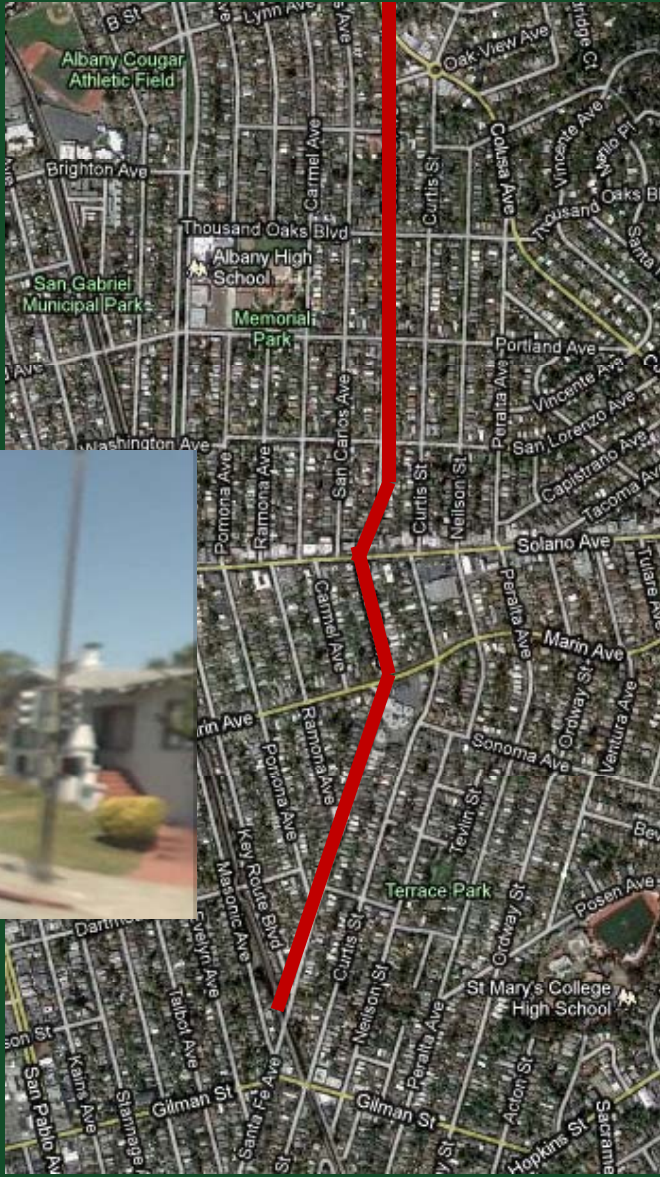
Cerrito Creek Path



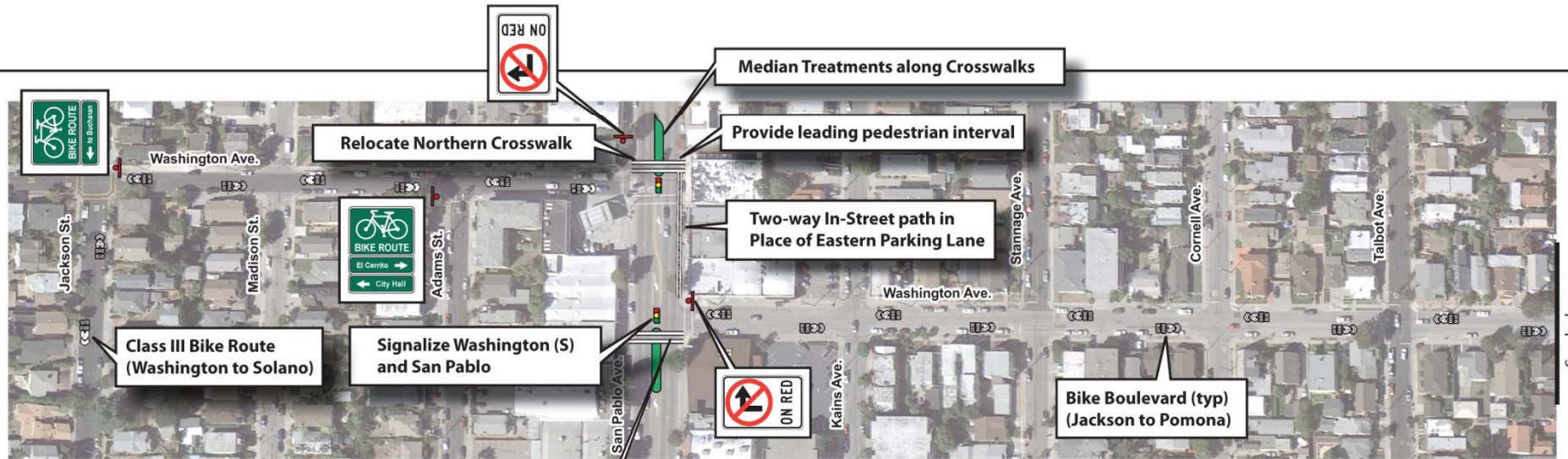
Concept Design Plan Sheet 2: San Pablo Avenue to Pacific East Mall (PROPOSED)



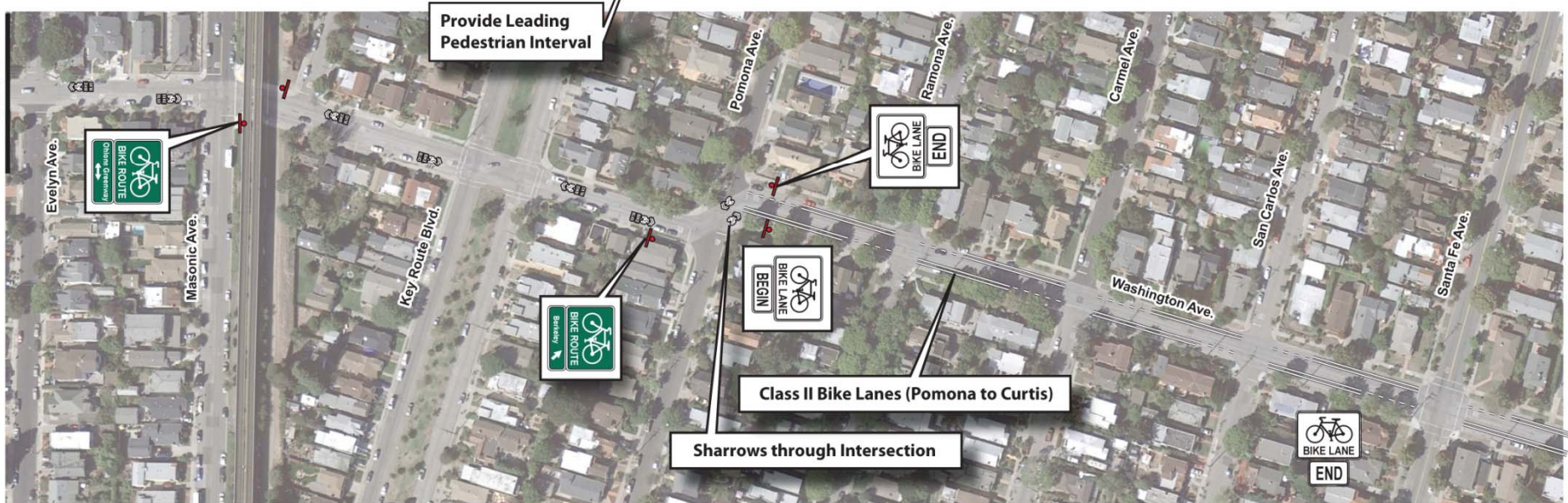
Santa Fe Bike Route



Washington Avenue Bike Boulevard



See below



See above

Washington Avenue Bike Boulevard



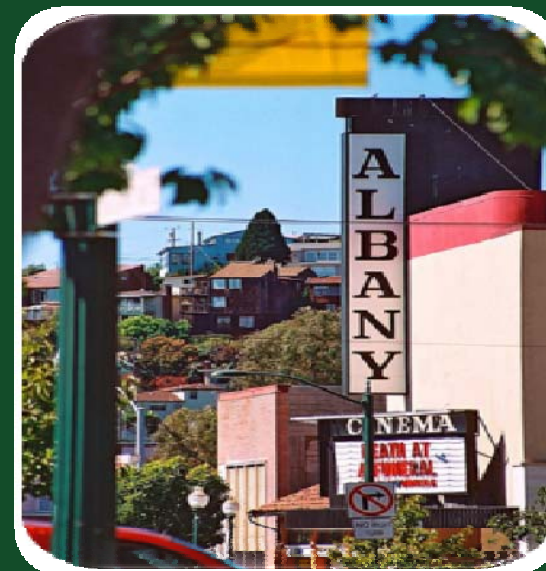
BICYCLE BOULEVARD

HILLEGASS-BOWDITCH

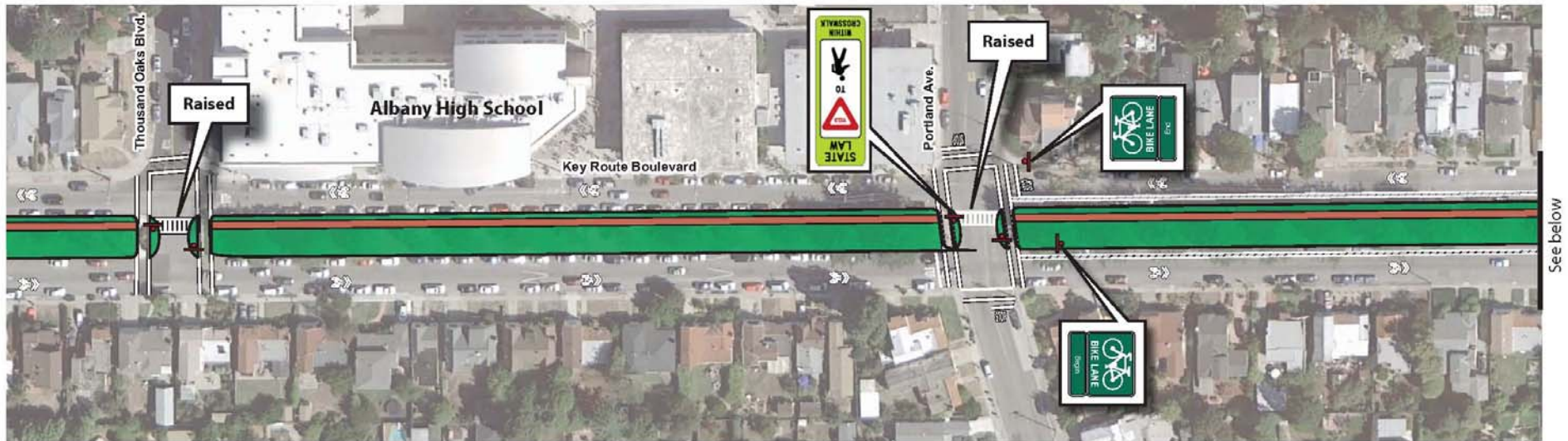
↑	Miles
Oakland	0.1
←	
Rockridge	0.5
Rockridge BART	0.8



Draft Tier 3 Projects



Key Route Boulevard Separated Bikeway and Median Path (2 Phases)



Key Route Boulevard Separated Bikeway and Median Path



Key Route Boulevard: Near Term Bike Route



Polk Street / Cordonices Creek Connection



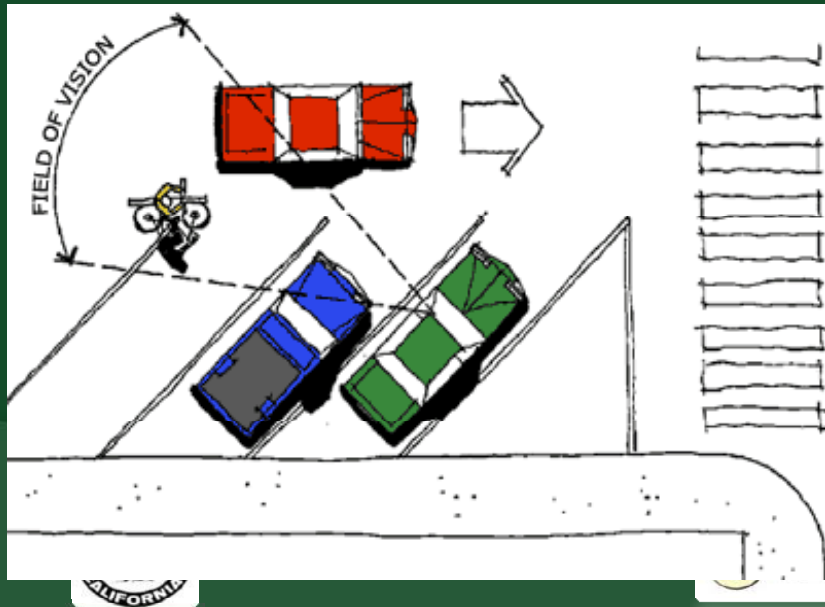
Peralta Bike Route



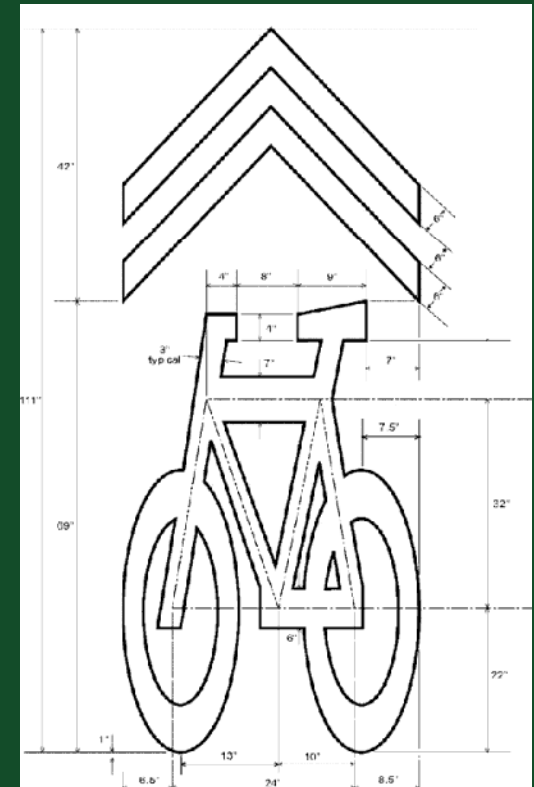
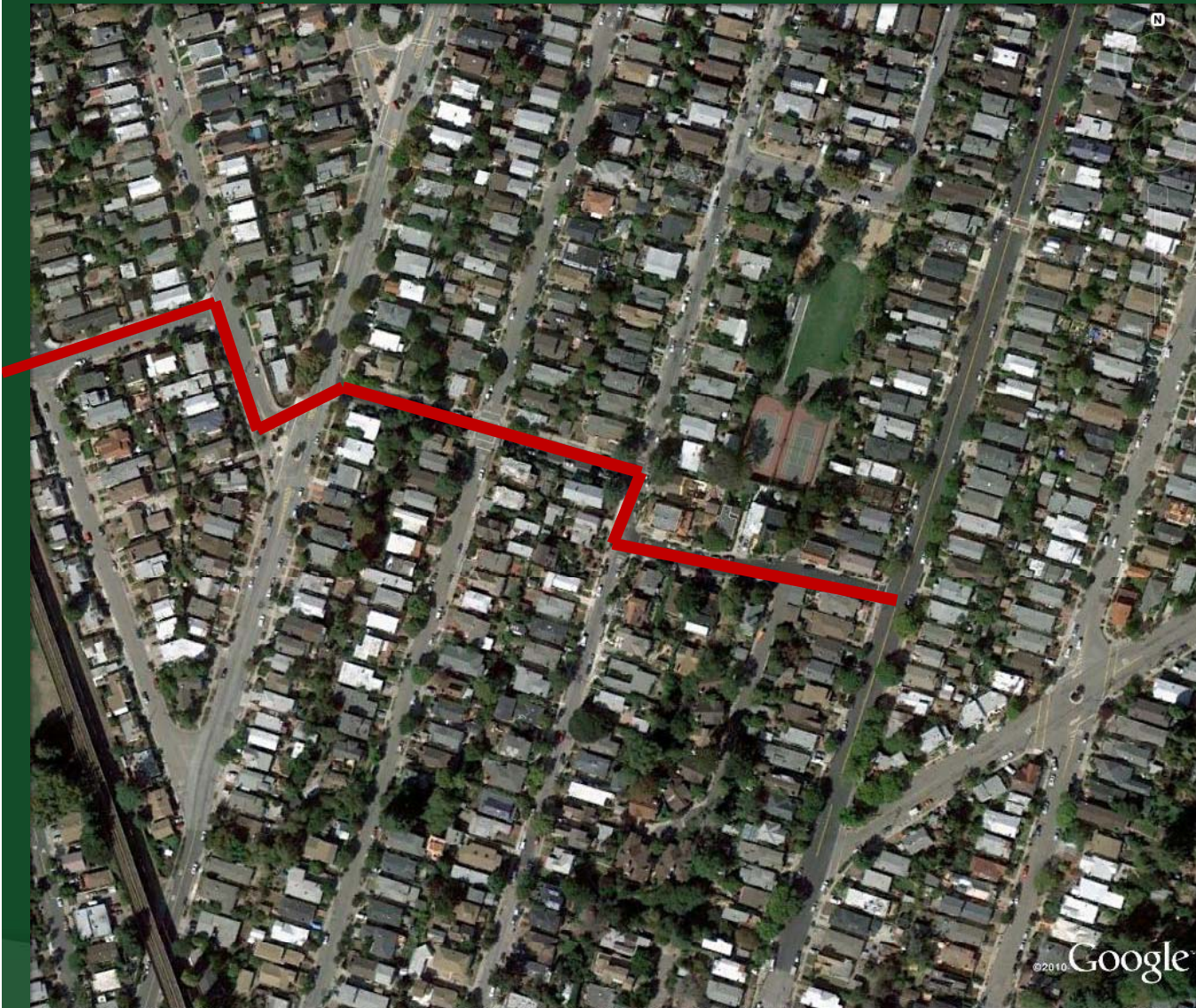
Portland Avenue Safe Routes to School



Portland Avenue Safe Routes to School



Francis Bike Route



Imagery Date: Oct 2, 2009

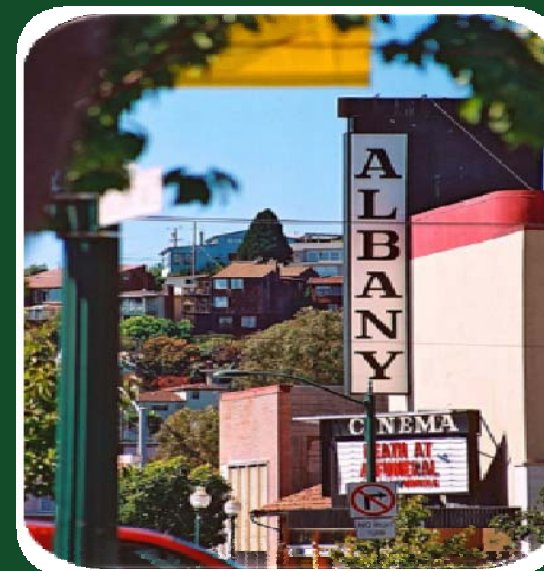
37°53'03.76" N 122°17'16.88" W elev 103 ft

©2010 Google Eye alt 1648 ft

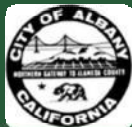
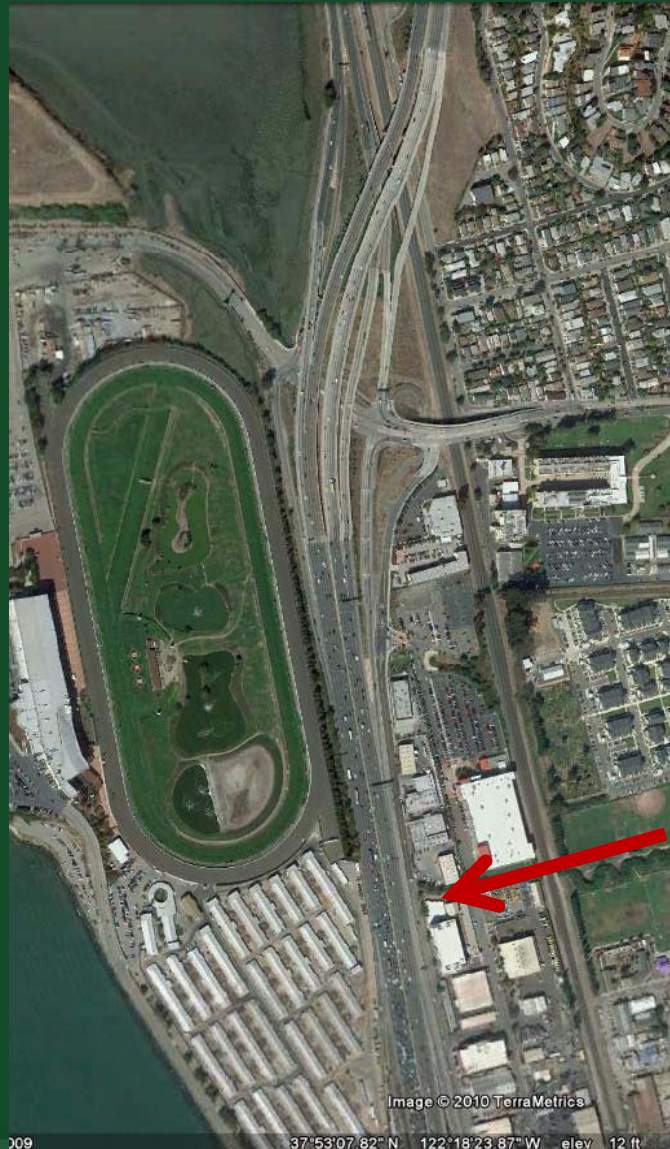


FEHR & PEERS
TRANSPORTATION CONSULTANTS

Longer Term Project



UC Village/Eastshore Connection



Questions or Comments?

