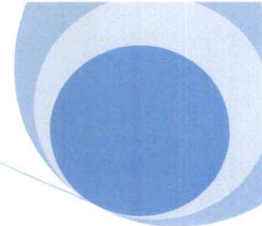


Business Plan
VitalGen Incorporated
City of Albany
Alameda, California

CITY OF ALBANY

OCT 01 2010

COMMUNITY DEVELOPMENT
DEPARTMENT



Confidentiality Agreement

The undersigned reader acknowledges that the information provided by VitalGen Incorporated in this business plan is confidential; therefore, reader agrees not to disclose it without the express written permission of an authorized director of VitalGen Incorporated.

It is acknowledged by reader that information to be furnished in this business plan is in all respects confidential in nature, other than information which is in the public domain through other means and that any disclosure or use of same by reader may cause serious harm or damage to the aforementioned person.

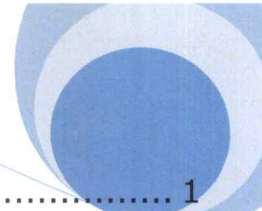
Upon request, this document is to be immediately returned to an authorized director of VitalGen Incorporated.

Signature

Name (typed or printed)

Date

This is a business plan. It does not imply an offering of securities.



1.0 Executive Summary	1
1.1 Organization Summary	1
2.0 Products and Services	2
3.0 Statement of the Need for a Medical Marijuana Dispensary in the City of Albany	3
4.0 Strategy and Implementation Summary	4
4.0a Fundraising Strategy.....	4
4.0b Milestones	5
Table 1: Milestones	5
5.0 Management Statement of Qualifications	5
5.0a Staff, Co-Founder(s) and Board of Director(s) Statement of Qualifications	5
Table 2: Anticipated site volume	6
5.0b Operations and Projections	6
5.0c Operational Narrative.....	7



1.0 Executive Summary

VitalGen Incorporated is a not for profit organization. It is estimated that the number of people who need services from *VitalGen Incorporated* will significantly increase during the next five years.

Our services will improve the ability of patients to maintain their quality of life and achieve their health goals of self-sufficiency.

1.1 Organization Summary

VitalGen Incorporated is a collective that will serve all of the City of Albany, Alameda County, California. Our goal is to alleviate suffering in the City of Albany, Alameda County, by soliciting, collecting, and packaging medical cannabis for distribution through the collective that will serve our target population group(s).

1.1a Mission Statement

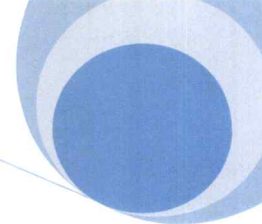
Our mission is to:

- alleviate suffering individuals by providing medical cannabis as prescribed by their physicians.
- promote the unity and balance of the mind-body-soul in the healing process.
- honor the trust provided by our fellow citizens by conforming and enforcing all applicable laws of the progressive, visionary City of Albany, and the Great State of California.
- protect the safety, tranquility, and cleanliness of our immediate neighborhood, by maintaining standard sanitary and operative procedures.
- protect medical cannabis patients by providing a controlled, safe and affordable alternative to the dangerous circumstances of the illegal drug market.
- create an extraordinary environment of medical care, by maintaining the trust and comfort of our patients.

1.1b Company Objectives

Our objectives are to:

- establish a network of local doctors and other health organizations in Alameda County;
- collect and effectively distribute medical cannabis to eligible patients;
- acquire start-up funding through corporate and private charities;
- raise additional funds by fundraising activity to support neighborhood needs for enhancement and maintenance.



2.0 Products and Services

VitalGen Incorporated will be funded from a variety of sources, public and private. It is anticipated that funding will increase by 15% over the next three years.

2.0a Patient Services

Free services will be established and provided within two years of opening, as follows:

- Yoga
- Meditation and hypnotherapy
- Holistic Medicine
- Nutritional Counseling
- Complete Disabled Access
 - Disabled access service counter
 - Disabled access restroom

2.0b Other Services

Patient Center:

- Workshops on participation in the political and social medical cannabis movement(s).

Legal Center:

- Workshops on patients' rights for access to safe medicine.

Care Center:

- Care packages may be provided to patients unable to afford their medicine.

2.0c Architectural Plans – see detailed plans under separate tab

Summary:

- Proper areas for services will be defined
- Handicapped access will be established
- Odors control system will be established to ensure there are no off-site odors at all times

2.0d Security Plans – see detailed plans under separate tab

Summary:

- 24-hr indoor and outdoor audio/video surveillance and recording cameras
- Motion detectors
- Alarms
- Interior and exterior safety personnel

2.0e Signage and Identification Plans – see detailed plans under separate tab



Summary:

- The building entrance will consist of clear signs that state the following:
 - the smoking, ingesting and consuming the marijuana on the premises is strictly prohibited
 - persons under 18 years of age are not allowed at any time on the premises unless they are in the presence of a parent or a guardian and are a qualified patient / caregiver
- No signs will contain texts or graphics that identifies, advertises or lists the services offered
- No signs will obstruct the entrance or windows on the premises

NOTE: The Board of Directors will be responsible for ongoing review of the program and expenditures to be able to make adjustments, as necessary, to assure the program solvency.

3.0 Statement of the Need for a Medical Marijuana Dispensary in the City of Albany

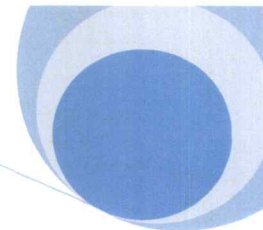
Market analysis indicates growth of population(s) in need of our services in Alameda and the City of Albany, respectively, in the next five years. This growth means that new businesses providing such services will increase as well. Currently, there is no dispensary located within the City limits of Albany. This is an indicator that at least one dispensary is needed to fill the gap of the lack of a local facility and serve the growing demand for alternative treatment. We plan to launch a small to moderate size facility that we feel will be suitable to the size and needs of the local patient / member population.

Our marketing Plan and Strategy will be focused on maintaining the reputation, reliability, safety and quality of our services in accordance with all applicable local and state laws and regulations.

Legal Considerations:

California State:

- Prop. 215 - Compassionate Use Act of 1996
 - Establishes the right for patients and primary caregivers to possess and grow cannabis.
- S.B. 420 -Medical Marijuana Program Act (2003)
 - Recognizes the right of patients and caregivers to associate collectively or cooperatively.
 - Protects patients and caregivers from arrest.
- Attorney General’s Guidelines (2008)
 - Set guidelines for the lawful operation of a medical cannabis collective, including:
 - Non-Profit Operation
 - Business Licenses, Sales Tax, and Seller’s Permits



- Membership Application and Verification

County Local:

- Albany Measure D Passes (2006)
 - "Do you support the establishment of a single medical marijuana facility in the City of Albany, to be subject to regulations that the City Council will incorporate into the municipal code prior to consideration of any permit for such a dispensary?"
- Albany Regulates Medical Cannabis Facilities (2007)
 - Requires criminal and business background check for all employees of the medical cannabis facility
 - Established permitted zones for operation
 - Disallows growing of cannabis in a medical cannabis facility
 - No alcohol is allowed to be sold in a medical cannabis facility
 - No use of cannabis is allowed in the medical cannabis facility

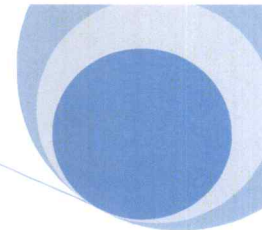
Federal U.S.:

- Attorney General of the United States of America- Eric Holder
 - "The Justice Department will no longer raid medical marijuana clubs that are established legally under state law." February 2009
- Justice Department Memorandum (Oct 2009)
 - "As a general matter, pursuit of these priorities should not focus federal resources in your States on individuals whose actions are in clear and unambiguous compliance with existing state laws providing for the medical use of marijuana."

4.0 Strategy and Implementation Summary

4.0a Fundraising Strategy

Fundraising events will be facilitated to ensure the continuity of our not for profit and donation based revenue, as well as to raise awareness and benefit to the community.



4.0b Milestones

Table 1: Milestones

Milestones	5-year projection	
	Start Date	End Date
Establish ALL Patient Services	11/29/2010	12/29/2012
Establish Legal Services	11/29/2010	06/30/2012
Establish Care Center	11/29/2010	01/31/2012
Establish Marketing Strategy	11/29/2010	06/30/2011
Establish Fundraising Strategy	11/29/2010	06/30/2011
Fundraising	11/29/2010	12/29/2015
Community Service	11/29/2010	12/29/2015

5.0 Management Statement of Qualifications

5.0a Staff, Co-Founder(s) and Board of Director(s) Statement of Qualifications:

Bret van den Akker, M.S., Candidate Ph.D. (Nuclear Engineering) - U.C. Berkeley Department of Nuclear Engineering

- Berkeley and Albany Community resident for the last fifteen years
- Experience working in secure facilities (such as LBL) and with sensitive materials (such as radioactive materials)
- Experience with shipping, receiving, packaging and monitoring accountability and utilization of various types of substances and chemical compounds, including radioactive substances, under a controlled environment
- Vast experience with the management and disposal / dissolution of materials following environmentally safe methods and federal regulations

Erik van den Akker, M.A., Candidate Ph.D. in Clinical Psychology

- Deputy Research Manager at the University of California San Diego, Department of Neuropsychiatry and Behavioral Medicine
- Over fifteen years of experience in biotech and pharmaceutical industry in the clinical research setting for research in the pain / chronic pain and psychological disorders area(s)
- Thorough knowledge of patient populations with Central Nervous System (CNS) and psychiatric / psychological disorders
- Extensive clinical research experience with emphasis on patients with neurological disorders and chronic pain, including direct patient management and monitoring in clinical studies of Paxil CR (depression), Diclofenac (pain/inflammation) and Levodopa (Parkinson's disease)
- Vast experience with the dispensing and accountability of medications under orders and protocols, as per doctor's prescription, hospital policies and procedures for the treatment of neurological disorders
- Extensive experience with the development of patient dosing and medication regime instructions and diaries for the recording of side effects
- Experience with the development, maintenance, filing and archiving of patient records including psychological evaluation records and treatment progress reports



- Extensive experience with the recruitment, pre-screening (phone and face-to-face) and retention of patients in ongoing clinical treatment programs of neurological disorders
- Extensive experience with the development, initial administration and management of patients' Informed Consent Forms and California Bill of Rights documents
- Extensive experience with the development and management of daily patient schedules and scheduling of follow-up appointments

5.0b Operations and Projections

The Management Team will consist of the Board of Directors:

- Bret van den Akker - Co-Founder and Director
- Erik van den Akker - Co-Founder and Director

The current operational staff will consist of the following positions (specific duties detailed under separate tab):

- Security Personnel (1)
- Patient Intake Specialist (1)
- Customer Service Specialist (2)
- Dispensing Specialist (1)

NOTE: Performance Standards will be maintained and adhered to, as per paragraph K of Ordinance # 07-01 of the Albany City Council. Additional staff may / will be assigned as the operations are established and a monthly assessment of patient / member accrual is made. One staff member will always be on premises and will not be responsible for the dispensing of medical cannabis. A detailed monthly personnel plan will be maintained to indicate current staff and modifications made as necessary as well as to maintain current training and standard procedure(s) records.

Hours of Operation (planned and to be further established):

- Monday through Sunday from 08:00 AM to 07:00 PM

Anticipated Number of Patients / Members:

Table 2: Anticipated site volume

<i>Milestones</i>	<i>Start-up</i>	<i>6-month projection</i>
	Start Date	End Date
First 50 patients	12/01/2010	01/29/2010
First 100 patients	01/29/2010	03/01/2010
First 200-250 patients	03/01/2010	05/31/2010
Total patients per month projection	41-42	



5.0c Operational Narrative

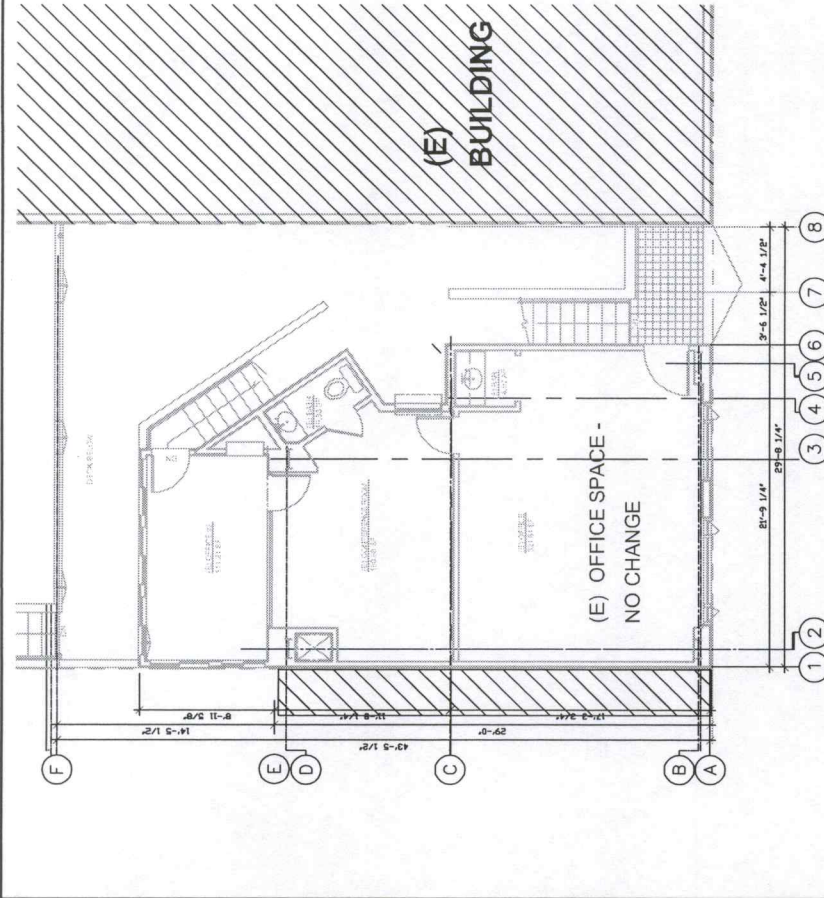
- It is expected that there will be a total of five to seven persons on-site during the operational hours of the facility, with approximately four staff members inside the dispensary at one time. The management staff will occupy the office space located on a separate floor above the facility.
 - Patient Intake Specialist (1) – will be responsible for patient intake, membership database log-in and tracking, and prescription verification.
 - Security Personnel (1) – will be responsible for verifying that people entering the dispensary are in possession of a doctor’s recommendation and/or other appropriate paperwork as well as those they are of appropriate age to enter the facility.
 - Customer Service Specialist (2) - will be responsible for assisting patients select amongst the variety of medicines available and providing any pertinent details as needed.
 - Dispensing Specialist (1) - will be responsible for accepting payment and dispensing medicine only
 - Management (2) - will be responsible for the oversight of the operations and for dealing with unforeseen circumstances that may present themselves. Additionally, management will be leading all community outreach efforts at VitalGen Incorporated.
- Dispensing standards:
 - In order to encourage patients to obtain monthly (as opposed to daily or weekly) prescription amounts, VitalGen Incorporated will offer an incentivized pricing schedule for the medicine.
 - VitalGen Incorporated shall make use of a barcode labeling system for dispensing (this will assist in inventory control). All medicine dispensed will be affixed with a sticker indicating the name of the dispensary and the amount of medicine dispensed.
 - It shall be a condition of membership to VitalGen Incorporated that medicine shall and must not be redistributed to anyone. Additionally, VitalGen Incorporated shall prohibit the dispensing of excessive amounts of medicine at one time.
 - Upon request, VitalGen Incorporated will provide the city with written evidence that the dispensary is not engaged in interstate commerce of medical cannabis at any time.
- Security
 - VitalGen Incorporated has contracted with ADT for security services. These services include an advanced security package exceeding standards currently being used in pharmacies. This includes, but is not limited to: door contacts, motion detectors, cameras, security doors, controlled entry/exit points (with magnetic locking and tracking systems). The security video will be maintained for a minimum of 72hs. Additionally, VitalGen Incorporated will hire security personnel whose duties will include checking that each patient that enters the premises is in possession of the appropriate credentials and/or documentation.



- Erik van den Akker will be the 24-hour emergency contact. His contact information has been submitted to the Chief of Police.
- No weapons or firearms will be allowed on the premises at any time.
- The operators of the dispensary will be responsible for the ongoing management of the site and its immediate surroundings.
 - The dispensing area will consist of one security window (similar to that which could be found at a bank). Only dispensing personnel will occupy the secured dispensing area. Only one patient will be dispensed medication at a time.
 - The restroom shall be locked and under control of the management at all times.
 - VitalGen Incorporated will provide patients with a list of the rules and regulations governing medical cannabis use and consumption within the City of Albany and recommendations on sensible cannabis etiquette.
- To date, VitalGen Incorporated has attempted to contact each resident within three hundred (300) feet of the dispensary via USPS mail in order to provide to provide them with information regarding the operation of the dispensary, and to provide them with contact information should the public wish to have input, make suggestions or pose questions or concerns.
- VitalGen Incorporated will also hire security personnel to monitor the exterior of dispensary during the hours of operation.
- VitalGen Incorporated staff members will take every reasonable step to avoid incidences of any nuisance in public areas, sidewalks, alleys and areas surrounding the premises and adjacent properties during business hours. These reasonable steps shall include calling the police in a timely manner, and requesting those engaging in objectionable activities to cease those activities.
- Personnel Management
 - VitalGen Incorporated will register each employee or volunteer with the Albany Police Department thirty days prior to the commencement of the employee's period of employment.
 - Each employee or volunteer will be required to submit two passport-quality photographs and may be fingerprinted by the Police Department for purposes of identification.
 - Each employee or volunteer will be required to disclose to the Police Department: name, current residence address, and telephone number; date of birth, height, weight, color of eyes, and hair.
 - VitalGen Incorporated will report immediately to the Community Development Department and the Chief of Police any and all changes of

address or ownership of the dispensary, and any changes of employees, volunteers or contractors who work in the dispensary, including those that have terminated employment with the dispensary.

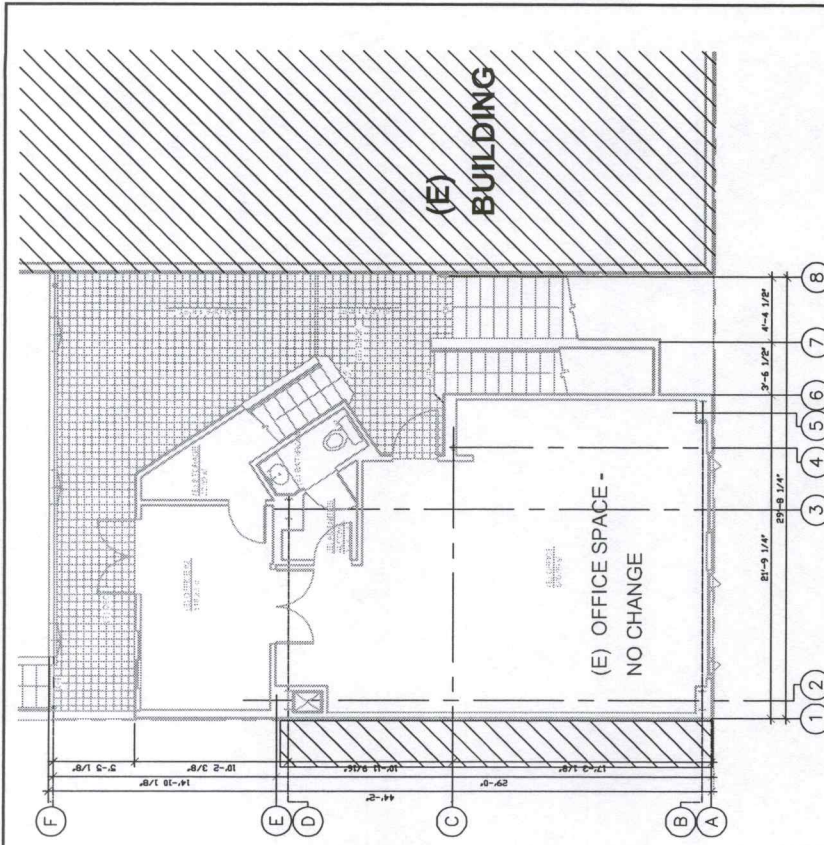
- Each employee, volunteer, contractor or other person working at the dispensary site shall be identified at all times by a visibly-displayed photo identification card, containing, at a minimum, the name and position of the person.
- VitalGen Incorporated is in the process of developing a comprehensive training program for each of its staff positions. VitalGen Incorporated will work on a continual basis to provide the staff with appropriate training for their intended duties to ensure understanding of rules and procedures regarding dispensing in compliance with State and local law.
- Record Maintenance
 - VitalGen Incorporated will be in adherence with State laws regarding patient confidentiality.
 - VitalGen Incorporated will maintain a current register of the names of all employees, including volunteers, currently employed by the dispensary, and shall disclose such registration for inspection by any City officer or official for purposes of determining compliance with the requirement of Albany City law.
 - VitalGen Incorporated will implement patient database software to maintain a registry of all current and former members. VitalGen Incorporated will assign an alphanumeric identification to each member and will identify members through this designation only as a protection of the confidentiality of the member.
 - Information on prior year's operation maybe provided annually as required. VitalGen Incorporated will adjust its operations as necessary to address issues.
 - VitalGen Incorporated may allow the Chief of Police, or his designee, to have access to the Corporation's books, records, accounts, and all data relevant to its permitted activities for the purpose of conducting an audit or examination to determine compliance with applicable law. These records will be made available no later than twenty-four (24) hours after the receipt of the written request by the Chief of Police.



(E) 3RD FLOOR PLAN 1/8"=1'-0"

688 SF

- PARTITION LEGEND**
- (E) EXTERIOR WALL TO REMAIN
 - (E) INTERIOR WALL TO REMAIN
 - (E) INTERIOR WALL TO BE REMOVED
 - (N) INTERIOR PARTITION



(E) 2ND FLOOR PLAN 1/8"=1'-0"

726 SF

- PARTITION LEGEND**
- (E) EXTERIOR WALL TO REMAIN
 - (E) INTERIOR WALL TO REMAIN
 - (E) INTERIOR WALL TO BE REMOVED
 - (N) INTERIOR PARTITION

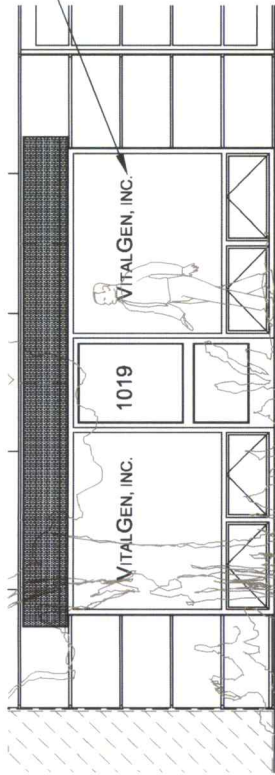
**ARCHITECTURAL
CONCEPTS**

• ARCHITECTURE
• PLANNING
• INTERIORS
JOHN W. COMEE, JR.
ARCHITECT C-9199
509 RAMONA AVE
ALBANY, CA 94706
T 510-525-9630
F 510-525-9630

VITALGEN, INC.
1019 SOLANO AVENUE, ALBANY, CA
BRET VAN DEN AKKER, DIRECTOR
ERIK VAN DEN AKKER, DIRECTOR

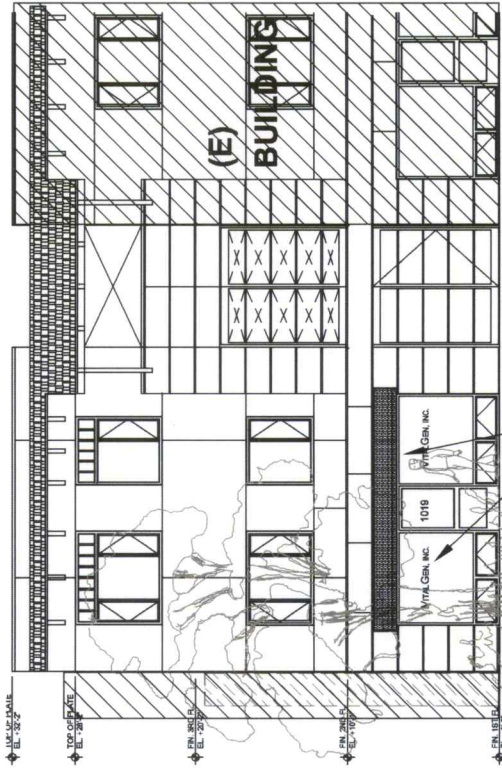
(E) 2ND & 3RD
FLOOR PLANS
SCALE
AS NOTED

DATE
09/06/2010
SHEET NO.
AA-2



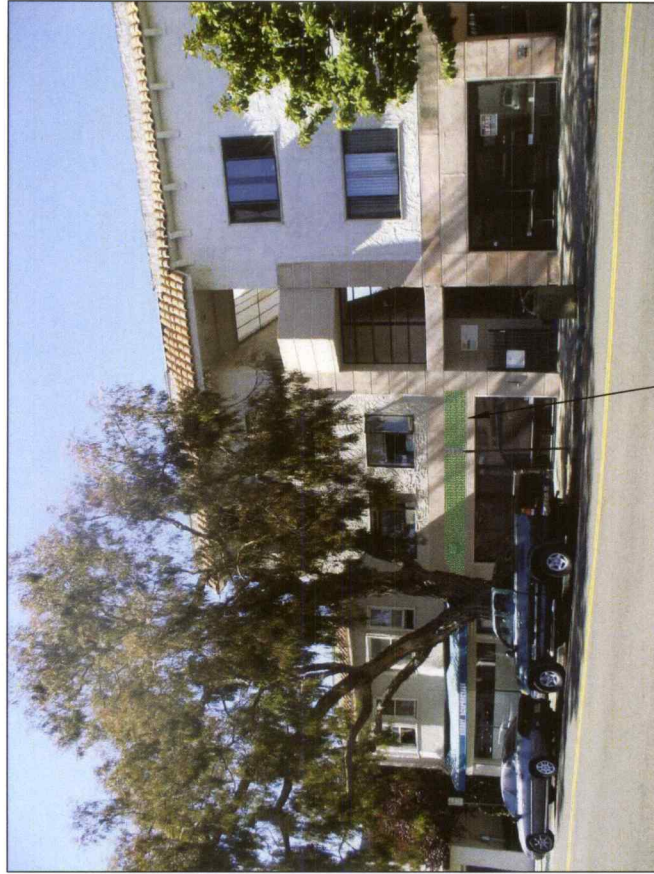
PROPOSED SIGNAGE

(N) SIGNAGE PER CITY ORDINANCE
6" TALL LETTERS & NUMBERS, 4"
LOWER LETTERS STENCILED TO
GLASS. 4.25 SF TOTAL SIGNAGE
AREA



(N) 18'-0" WIDE x 3'-0" DEEP CANOPY
(N) SIGNAGE PER CITY ORDINANCE

PROPOSED EXTERIOR ELEVATION 1/8"=1'-0"



(N) 18'-0" WIDE x 3'-0" DEEP CANOPY

(E) EXTERIOR ELEVATION NOT TO SCALE

**ARCHITECTURAL
CONCEPTS**

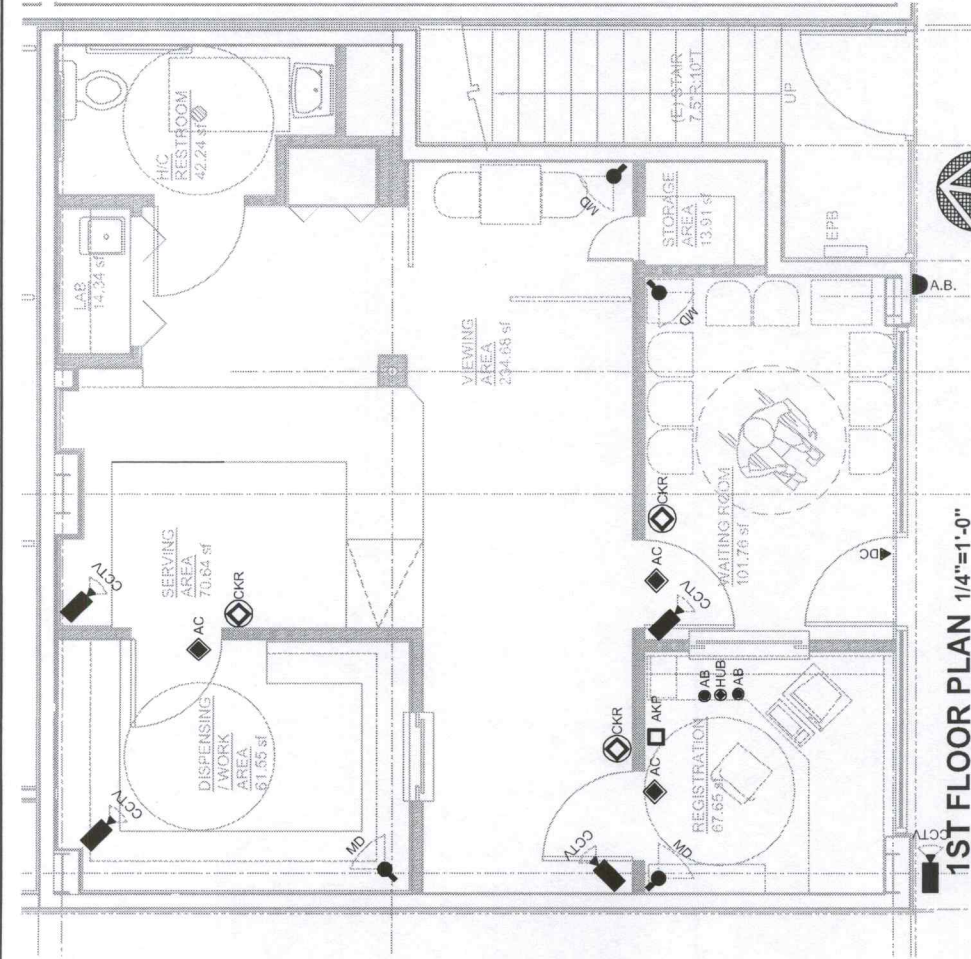
ARCHITECTURE
PLANNING
INTERIORS
JOHN W. COMEER, JR.
ARCHITECT C-9199
509 RAMONA AVE
ALBANY, CA 94706
T 510-525-9630
F 510-525-9630

VITALGEN, INC.
1019 SOLANO AVENUE, ALBANY, CA
BRET VAN DEN AKKER, DIRECTOR
ERIK VAN DEN AKKER, DIRECTOR

**(E) & PROPOSED
EXTERIOR
ELEVATIONS**

DATE
09/06/2010
SCALE
AS NOTED

SHEET NO.
AA-3



1ST FLOOR PLAN 1/4"=1'-0"

LEGEND

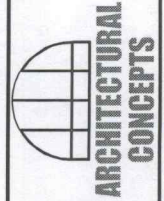
- AB ACCESS BUTTON
- ◆ AC ACCESS CONTROL
- ▲ A.B. ALARM BELL
- AKP ALARM KEY PAD
- ⊙ CKR CARD KEY READER
- ⊞ CLOSED CIRCUIT TV
- ◀ DC DOOR CONTACT
- ⊙ HUB HOLD-UP BUTTON
- ⊞ MD MOTION DETECTOR

DATE 09/26/2010
 SCALE AS NOTED
 SHEET NO. AA-4

1ST FLOOR SECURITY PLAN

VITALGEN, INC.
 1019 SOLANO AVENUE, ALBANY, CA
 BRET VAN DEN AKKER, DIRECTOR
 ERIK VAN DEN AKKER, DIRECTOR

• ARCHITECTURE
 • PLANNING
 • INTERIORS
 JOHN W. COMEE, JR.
 ARCHITECT C-9199
 509 RAMONA AVE.
 ALBANY, CA 94706
 T 510-525-9630
 F 510-525-9630



Curriculum Vitae

Bret Patrick van den Akker
phone: (510) 295-4313
email : bpvda@vitalgen.org

Education

University of California at Berkeley
Berkeley, California

2006-present	Candidate Ph.D.	Nuclear Engineering
2010	M.S.	Nuclear Engineering
2003	B.A.	Physics

Work Experience

- Graduate Student Researcher (University of California at Berkeley) 2009 - Present
Safety Assessment of the Long-term Storage of Spent
Nuclear Fuel from Proposed Gen IV Nuclear Reactor
- Graduate Student Researcher (University of California at San Francisco) 2007-2009
Reconstruction Algorithms for SPECT Imaging
Tumor Studies in Murine Models
- Graduate Student Research Asst. (Lawrence Berkeley National Laboratory) 2004-2006
Research Assistance as Needed on Staff Research Projects
- Intern Research Assistant Summer 2004
Research Assistance and Development of Prototype
Atmospheric Pressure Plasma Torch for Silicon Wafer Processing
- Senior Research Technician (Lawrence Berkeley National Laboratory) 2003-2004
Research Assistance and Development of Plasma
Based High Flux Compact Neutron Generator
- Research Assistant (Lawrence Berkeley National Laboratory) 2001-2003
Research Assistance and Development of Maskless
Micro-ion beam Reduction Lithography (MMRL)
Technique and Workstation

Specific Experience

Safety Assessment of the Long-term Geological Disposition of Deep-Burn Spent Fuel (DBSF): Project goal is to assess the suitability of DBSF for long-term geological storage and to determine the efficacy of the Deep-Burn fuel cycle in transmuting its fuel for the purposes of electricity generation, reducing the subsequent radiotoxicity of the spent fuel, and nuclear non-proliferation.

- Research is ongoing.

MMRL: Project goal is to produce low cost/high throughput sub- 50nm line width lithography device for use on silicon wafers

- Design and optimize 10x, 20x, and 50x demagnification electrostatic lenses for use with patterned ion beams for lithography using MUNRO and IGUN software packages
- Operate workstation and analyze lithographic images with optical microscope and scanning electron microscope (SEM) for accurate quantification of image line width
- Maintain workstation in operating condition, including making routine repairs, monitoring of vacuum conditions, ensuring gas bottle supply and proper storage of gas cylinders, etc.
- Collection and analyzation of data and preparation of slides for presentation at group meetings and conferences

Neutron Generator: Project goal is to produce a compact high flux neutron generator for use in cargo screening and other homeland security applications

- Characterization of ion source in terms of ion current, atomic species distribution, plasma density, etc.
- Operation of test stand
- Maintain workstation in operating condition, including making routine repairs, monitoring of vacuum conditions, ensuring gas bottle supply and proper storage of gas cylinders, etc
- Collection and analyzation of data
- Analyzation of design of extraction electrode using IGUN and PBGUNS software packages
- Provide feedback and suggestions at weekly meetings

Plasma Torch: Project goal is to produce working prototype of an atmospheric pressure plasma torch for use in high-throughput silicon wafer processing

- Operate workstation and collection/analyzation of data
- Provide feedback on the operation of plasma torch for consideration of design change
- Design and build matching network for use with RF power supply and RF driven atmospheric plasma torch
- Repair, modify, and maintain test stand in operational condition

Skills

- Safety assessment of geological repositories for long-term storage of spent nuclear fuel
- MUNRO, PBGUNS, IGUN software packages
- Extensive experience in maintaining scientific workstations in operational and presentable condition (including routine repairs, modifications, and housekeeping)
- Extensive experience with vacuum conditions (including some UHV experience)
- Extensive experience with RF driven plasmas

- Extensive experience with high voltage power supplies and interlocked safeguards
- Experience characterizing plasma sources
- Experience designing and building matching networks for use with RF power supplies and RF driven plasmas
- Familiarity with semi-clean room conditions
- MS Word, Excel, and PowerPoint

Publications

- V. V. Ngo, **B. van den Akker**, K. N. Leung, I. Noh, and S. B. Wilde, Abstracts of the 46th Electron, Ion and Photon Beam Technology and Nanofabrication Conference, Anaheim, CA, 28–31 May 2002, p. 67
- V. V. Ngo, **B. van den Akker**, K. N. Leung, Isaac Noh, K. L. Scott, and S. Wilde, Demonstrations of electronic pattern switching and 10× pattern demagnification in a maskless microion-beam reduction lithography system, J. Vac. Sci. Technol. B Volume 21, Issue 6, pp. 2297-2303 (November 2003)
- Q. Ji, X. Jianga, L. Jia, Y. Chena, **B. van den Akker** and K.-N. Leung, Novel Ion Beam Tools for Nanofabrication, Technical Proceedings of the 2005 NSTI Nanotechnology Conference and Trade Show, Volume 2
- Y. Chen, L. Ji, **B. van den Akker**, Q. Ji, Ion beam imprinting system, Proc. SPIE, Vol. 5751, 548 (2005)

Hobbies and Interests

Martial Arts:

- Hapkido (Korean Self-Defense Martial Art: 1st Degree Black Belt Awarded August 2006 - Active for 11+ years)
- Judo (Japanese Martial Art and Olympic Sport - Active for 6+ years: 1st Degree Black Belt December 2010 *anticipated*)
- Brazilian Jiu Jitsu (Brazilian Self-Defense Martial Art Active for 4+years)

Curriculum Vitae

Erik van den Akker
phone: (858) 354-5101
email: efvda@yahoo.com

Education

Alliant International University /
California School of Professional Psychology
San Diego, California

2008-present	Candidate Ph.D.	Psychology (Clinical) <i>APA-accredited</i>
2006	M.A.	Psychology (Clinical)
2005	B.A.	Psychology, Magna cum Laude
1995	A.A.	Chemistry major

Professional Societies

2008 Member of American Psychological Association

Clinical Experience

University of California San Diego / Department of Psychiatry and Behavioral
Medicine

Deputy Program Manager (Clinical Trials)

2008 to Present

Director: David Feifel, M.D., Ph.D.

- Serve at the full operational level as internal monitor (CRA), study coordinator (SC) and rater for a wide variety of clinical drug trials
- Act as the primary liaison between FDA, IRB, pharmaceutical company sponsors and the research team
- Generate regulatory updates (IB, IND) and IRB submission/re-submission packets for new and ongoing clinical studies
- Write study specific informed consents(s)
- Write internal work instructions and SOPs; mentor, oversee performance and daily assignment of 1 graduate student/intern
- Administer informed consent to eligible patients in clinical trials for major depression, schizophrenia, bipolar disorder, ADHD, Anxiety
- Ensure compliance with FDA guidelines/regulations and IRB SOP for all assigned studies
- Manage all aspects of complex clinical trials including following patients throughout the trials, including but not limited to reviewing all study related documents and creating advertising for recruitment of research participants
- Conduct diagnostic interviews and complete clinical rating scales of subjects enrolled in the Neuropsychiatry and Behavioral Medicine Clinical Trials Program
- Screen patients against protocol inclusion/exclusion criteria for potential study

- participation
- Conduct comprehensive personality/neuropsychological testing and report writing for:
 - Neuropsychiatry and Behavioral Medicine Clinical Trials Program
 - UCSD ADHD Clinic
 - Epilepsy Service
 - Transplant Service
 - Pain Service
 - Oncology Service
 - PACE Program
- Participate in weekly and/or bi-weekly individual/group supervision

North Central Mental Health Clinic

Clinical Psychology Intern

2007 – 2008

Supervisor: Charlie Hoar, Ph.D.

- Intake and diagnostic evaluations of clients
- Individual psychotherapy recommendations
- Administer test batteries
- Profiling and report writing based on cognitive/psychological assessment results
- Provide psychological and behavioral medicine specialized treatments to patients with acute psychological disorders and/or chronic illnesses
- Design and lead group therapy sessions for patients with personality disorders, chronic pain and improvement of quality of life
- Conduct individualized psychotherapy sessions

University of California San Diego / Department of Psychiatry and Behavioral Medicine

Clinical Psychology Intern (Clinical Trials)

2006 – 2007

Supervisor: David Feifel, M.D., Ph.D.

- Generate IRB submission/re-submission packets for new and ongoing clinical studies
- Administer informed consent to eligible patients in clinical trials for major depression, schizophrenia, bipolar disorder, ADHD, Anxiety
- Screen patients against protocol inclusion/exclusion criteria for potential study participation
- Conduct comprehensive personality/neuropsychological testing and report writing on psychiatric outpatients
- Conduct diagnostic interviews and testing of subjects enrolled in clinical trials

Psychological Assessments Administered

- SCID, HAM-A, HAM-D
- WISC III/IV

- Rorschach
- NEO-PI-R
- WAIS III
- TAT
- Woodcock -Johnson
- K-ABC
- RATC
- Wechsler Memory Scales
- KAIT
- K-BIT
- WRAT-III
- Bender-Gestalt
- VMI
- Stanford- Binet
- MMPI-A
- Benton Visual Retention
- MMPI-2
- BDI/BAI
- Full Psychological Battery & Written Report
- Partial Psychological Battery & Written Report

Biotechnology Research Experience

Skyepharma, San Diego, California

Associate / Medical Writer, 2002 – present

- Responsible for writing and editing Clinical Development documents, including but not limited to clinical protocols, Investigator's Brochures, clinical study reports, subject consent forms, integrated safety and efficacy summaries, presentation materials, and publications to medical journals.
- Collaborate with Regulatory Affairs and other departments to prepare clinical sections for annual IND updates, IND submissions, and regulatory submissions.

Projects/Indications: Depression, Pain

Clinical Manufacturing Team Leader, 2000 – 2002

- Responsible for the generation, revision and implementation of company manufacturing SOPs & BPRs, as well as validation protocols, and training team members on such
- Conduct team training on ongoing basis and oversee the maintenance of controlled environmental areas, in strict adherence to company SOPs and cGMPs
- Generate exception, discrepancies and variance reports
- Responsible for the generation and maintenance of manufacturing and quality control documents/records, and modifying document control requirements
- Assisting in document integration for IND/NDA submission(s)

- Assisting Validation Department with the addition of new equipment for clinical manufacturing use (i.e., IQ/OQ/PQ)
- Responsible for purchasing and installation of equipment for manufacturing use: i.e., FATs, installation in adherence to floor plans, etc.

BBCS Consulting Services, Rancho Bernardo, California
Validation Consultant, 2000 – 2001 (consultant)

- Various contract validation projects for local biotech companies
- Observing client sites and equipment
- Generation and execution of validation protocols for phase I, II and III equipment
- Responsible for annual/bi-annual re-validation of process equipment
- Responsible for equipment troubleshooting
- Generation of SOPs for the newly validated equipment
- Recommends vendor/resources as needed

Alliance Pharmaceutical Corp., San Diego, California
Manufacturing Operator II/Team Lead, 1998 – 2000

- Assisted in the conduct of FDA phase III clinical trials of ultrasound contrasting agent
- Participated in the maintenance of controlled environmental areas in strict adherence to company SOPs and cGMPs
- Responsible for the implementation of company manufacturing SOPs
- Responsible for the re-validation of WFI/RODI/Clean Steam Systems
- Assisted in overall planning of clinical trial material(s) in collaboration with clinical department for phase III trials
- Assisted in regulatory authority inspection(s) follow-up process
- Fully responsible for document tracking and filing for the department (including training records, deviations and discrepancies)
- Responsible for the generation and maintenance of the BPR database

Nanogen, San Diego, California
Senior Research Associate, 1995 – 1997

- Assisted in the development of experimental microchips programmed to perform various DNA assays
- Assisting in set-up of multistep syntheses
- Prepared buffer solutions
- Collected and analyzed scientific data
- Assisted in the generation and revision of technical protocols
- Assisted in the accumulation and preparation of status reports

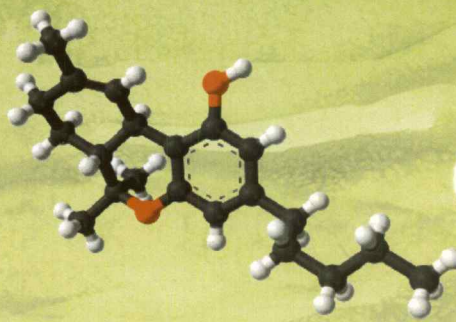
Skills

- Lotus, Access, MSOffice 2007
- PC Docs
- Document Databases
- Adobe, Adobe PhotoShop
- File Maker Pro
- SAS datasets
- SharePoint
- Medical terminology and interpretation
- Japanese spoken (beginning to intermediate)
- ELISA
- HPLC
- Spectroscopy/GC

REFERENCES AVAILABLE UPON REQUEST

VitalGen Incorporated

WE ARE SOLICITING INPUT AND QUESTIONS: WELLNESS CLINIC ON SOLANO AVENUE



WHO are we?

Valuable
Integrity
Towards
A
Lifestyle of
Good health
Energy and
Nutrition



VitalGen Incorporated

WHAT are our objectives?

- ☐ *establish a network of local doctors and other health organizations to collect and effectively distribute medical cannabis to eligible members / patients;*
- ☐ *protect the safety, tranquility, and cleanliness of our immediate neighborhood;*
- ☐ *honor the trust provided by our fellow citizens by conforming and enforcing all applicable laws of the progressive, visionary City of Albany, and the Great State of California;*
- ☐ *organize fundraising activity to support neighborhood needs for enhancement and maintenance;*
- ☐ *promote the unity and balance of the mind-body-soul in the healing process.*

Phone: 510-295-4313

Fax: 510-295-4313

Mailing Address:

3020 El Cerrito Plaza, Suite 531

El Cerrito, California 94530

Web Site:

www.vitalgen.org

Email:

info@vitalgen.org

WE ARE PLANNING TO OFFER THESE SERVICES TO OUR MEMBERS



Chiropractor
Acupuncture
Deep Tissue Treatment
Shiatsu
Health Speakers
Massage Therapy
Meditation Class
Yoga Class
Nutritionist / Counseling
Holistic Health

HERE ARE SOME FACTS FOR YOUR CONVENIENCE

The patient, who needs medical cannabis for treatment, does not always appear dramatically ill.

The chemotherapy victim, who loses hair and needs the medical cannabis to stimulate appetite and tolerate nausea, has obvious signs of illness. However, more often, the outward appearance of an individual who suffers from chronic pain conditions appears normal and well.

From acute to chronic conditions, it is the norm for patients to present their best face to the outside world, even though they may quietly carry a lifetime of wear and tear.

Alternative medication can be just as important a tool for tolerating daily pains as tolerating the extreme side effects of other more aggressive pharmaceutical interventions.