

# SAFeway



## SAFeway STORE - #2869

1500 SOLANO AVENUE  
ALBANY, CA 94706

# SUBMITTAL FOR DESIGN REVIEW



MILINDO SAFERIDGE CA  
REGISTRATION  
EDUCATION  
FIELD USE  
ARCHITECTURE AND PLANNING  
SGPA  
1500 SOLANO AVENUE  
ALBANY, CA 94706

### SHEET INDEX

SHEET INDEX	
Sheet Number	Sheet Name
A10	TITLE SHEET
A11	EXISTING SITE PLAN
A12	PROPOSED SITE PLAN
A13	FLOOR PLAN GARAGE LEVEL
A14	FLOOR PLAN LEVEL
A15	ROOF PLAN
A21	ELEVATIONS N & E
A22	ELEVATIONS S & W
A31	BUILDING SECTIONS
A41	COLOR + MATERIAL BOARD
A42	PROJECT VIEW PERSPECTIVES
L11	CONCEPTUAL LANDSCAPE PLAN
L12	LANDSCAPE SECTIONS
L13	LANDSCAPE SECTIONS

### DEVELOPED BY



5918 STONERIDGE MALL ROAD  
PLEASANTON CA 94588 3228  
PH (925) 487-3000  
FAX (925) 487 2361  
ATTN: TODD PARADIS  
email: todd.paradis@safeway.com

### PROJECT DIRECTORY (CONSULTING TEAM)

**ARCHITECT**  
SGPA Architecture and Planning  
200 Pine Street Studio 500  
San Francisco CA 94104  
Ph: (415) 983-0131  
Fax: (415) 983-0593  
Philip D Agostino  
Email: pdagostino@sgpa.com

**LANDSCAPE ARCHITECT**  
BRUCE JETT ASSOCIATES LANDSCAPE ARCHITECTS  
2470 Manner Square Loop  
Alameda California 94501  
Ph: (510) 628-0996  
Bruce Jett  
Email: bruce@landsarch.com

**CIVIL ENGINEER**  
BKF Engineers  
4970 Willow Road Suite 250  
Pleasanton CA 94588  
Ph: (925) 399-7751  
Eric Grod  
Email: egrod@bkf.com

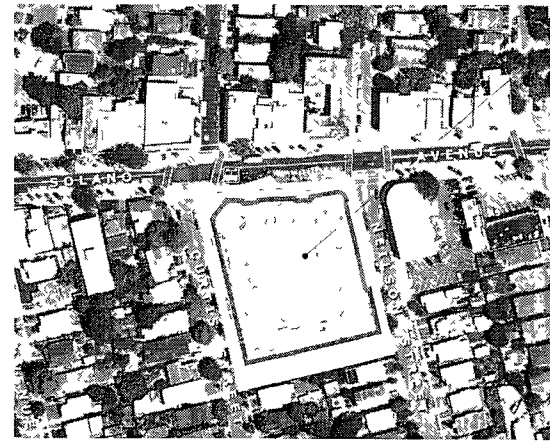
### PROJECT SUMMARY

Safeway proposes to demolish its existing store and construct a new state of the art Lifestyle grocery store of approximately 52,573 square feet of retail space at the Solano Avenue street level, 3,523 square feet of office space at the mezzanine level above, and a partially sub-grade parking structure containing 127 on site parking spaces.

The Project would be constructed to meet Leadership in Energy and Environmental Design (LEED®) requirements for Gold level certification for new construction (LEED NC) and would fully comply with the City of Albany's Green Building Standards.

The proposed use of Safeway's new grocery store is the retail sales of food and grocery items for primarily off site consumption. Some snacks and drinks would be available for on site consumption as well. The store departments would include Deli, Bakery, Beer & Wine, Pharmacy, Service Meal and seafood, Produce, and a Cafe or Starbucks with both indoor and outdoor seating. Safeway would serve local shoppers who need general grocery products and services in a one stop location.

### VICINITY MAP



SUBJECT SITE



SAFeway STORE - #2869  
1500 SOLANO AVENUE ALBANY CALIFORNIA

SAFeway

TITLE SHEET

A10







ARCHITECTURAL  
SERVICES  
INCORPORATED

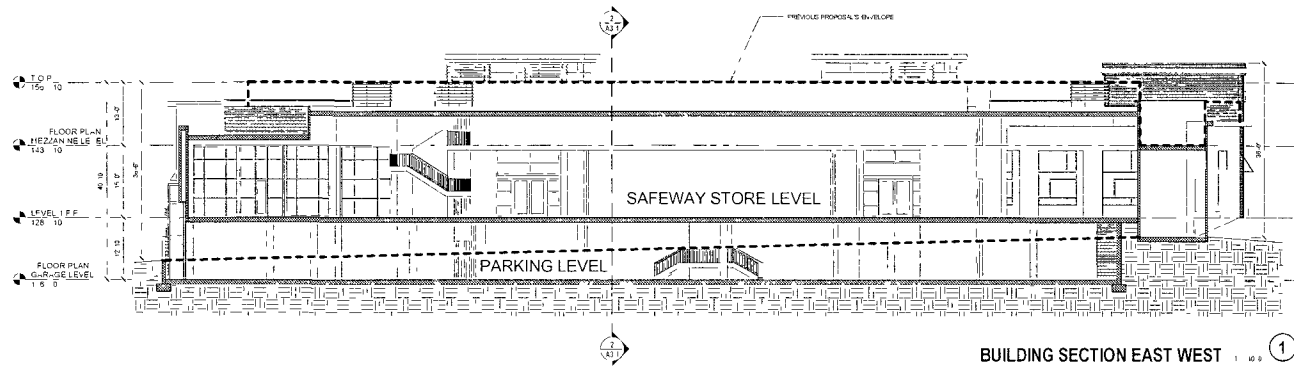
SAN FRANCISCO

ARCHITECTURE AND PLANNING  
ARCHITECTS

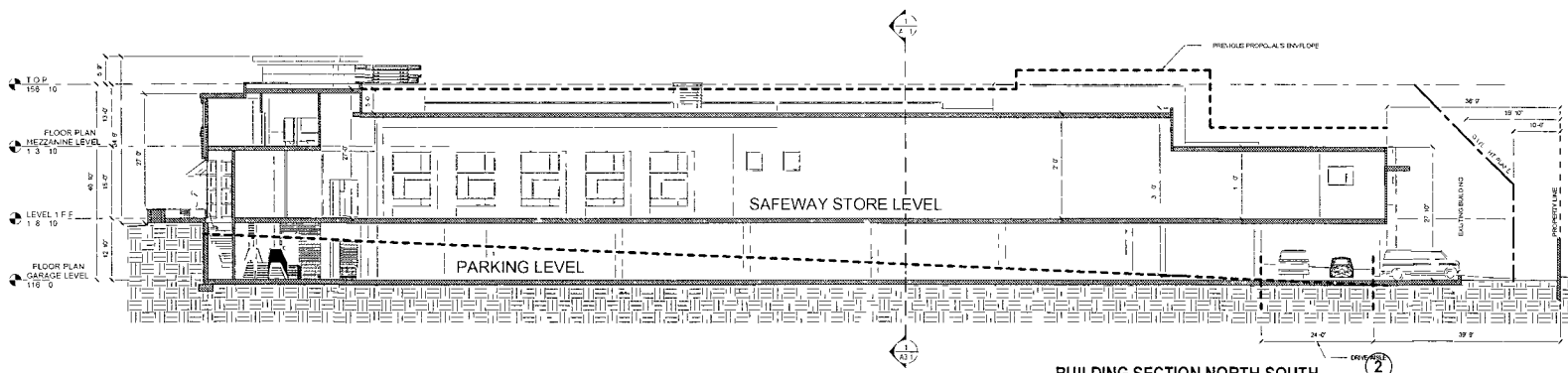
SGPA



COPYRIGHT 2004  
PROJECT NO. 10-11  
DATE ISSUED



BUILDING SECTION EAST WEST 1/8" = 1'-0" (1)

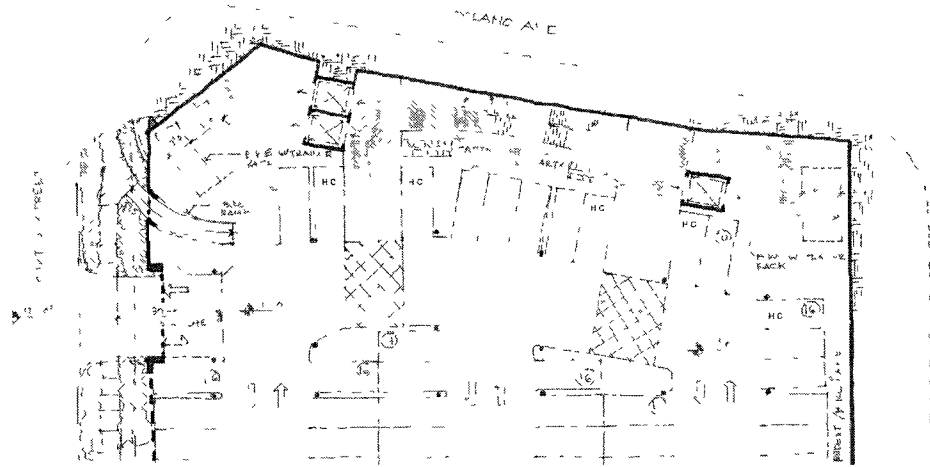


BUILDING SECTION NORTH-SOUTH 1/8" = 1'-0" (2)

SAFEWAY STORE - #2869  
1500 SOLANO AVENUE ALBANY, CALIFORNIA

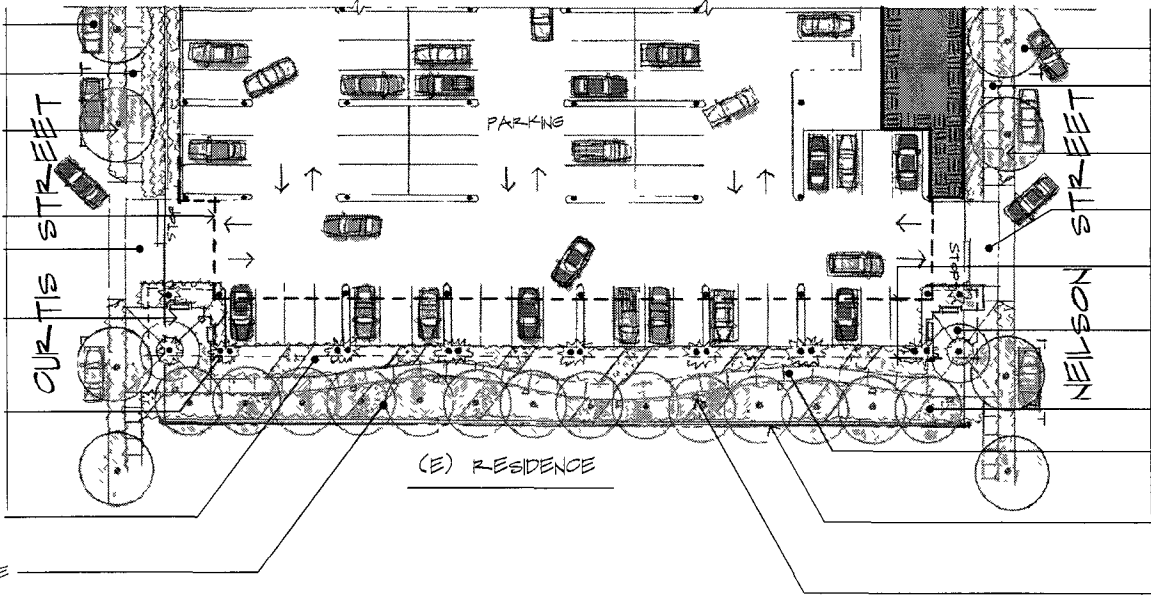
SAFEWAY

BUILDING SECTIONS



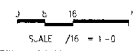
PARTIAL GARAGE LEVEL PLAN

- PARALLEL PARKING
- 4' W PED SIDEWALK
- PERIMETER LANDSCAPING AND STREET TREES
- BLDG LINE ABOVE, TYP.
- RELOCATED ENTRY/EXIT DRIVEWAY
- POCKET PLAZA WITH TRELLIS FEATURE + BENCH SEATING
- COLUMN SUPPORTS FOR TRELLIS W/VINE PLANTS TO TRAIN TO TRELLIS ABOVE
- DROUGHT TOLERANT LANDSCAPING
- RANGARDEN/BIOSWALE AREA TO FILTER STORMWATER



- TRUCK ACCESS RESTRICTED TO SOLANO AVENUE
- PARALLEL PARKING
- 5' W SIDEWALK
- PERIMETER LANDSCAPING AND STREET TREES
- RELOCATED ENTRY/EXIT DRIVEWAY
- TRELLIS ABOVE PARKING
- POCKET PLAZA W/ TRELLIS FEATURE AND BENCH SEATING
- DENSE TREE PLANTING AGAINST (N) SOUND WALL
- (N) MEANDERING PED SIDEWALK, 4' WIDE
- (N) 12' H WALL AT PROP. LINE
- LOW VOLTAGE PATH LIGHTING AT SW EDGE

OPTION 'A'

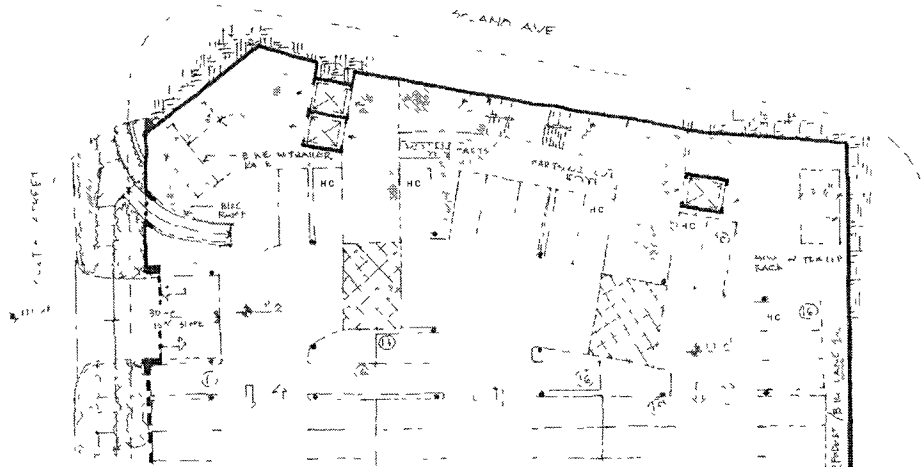


**SG**  
ARCHITECTURE AND PLANNING  
1500 SOLANO AVENUE ALBANY CALIFORNIA 94706  
TEL: 415 781 1111 FAX: 415 781 1112  
WWW.SGARCHITECTURE.COM

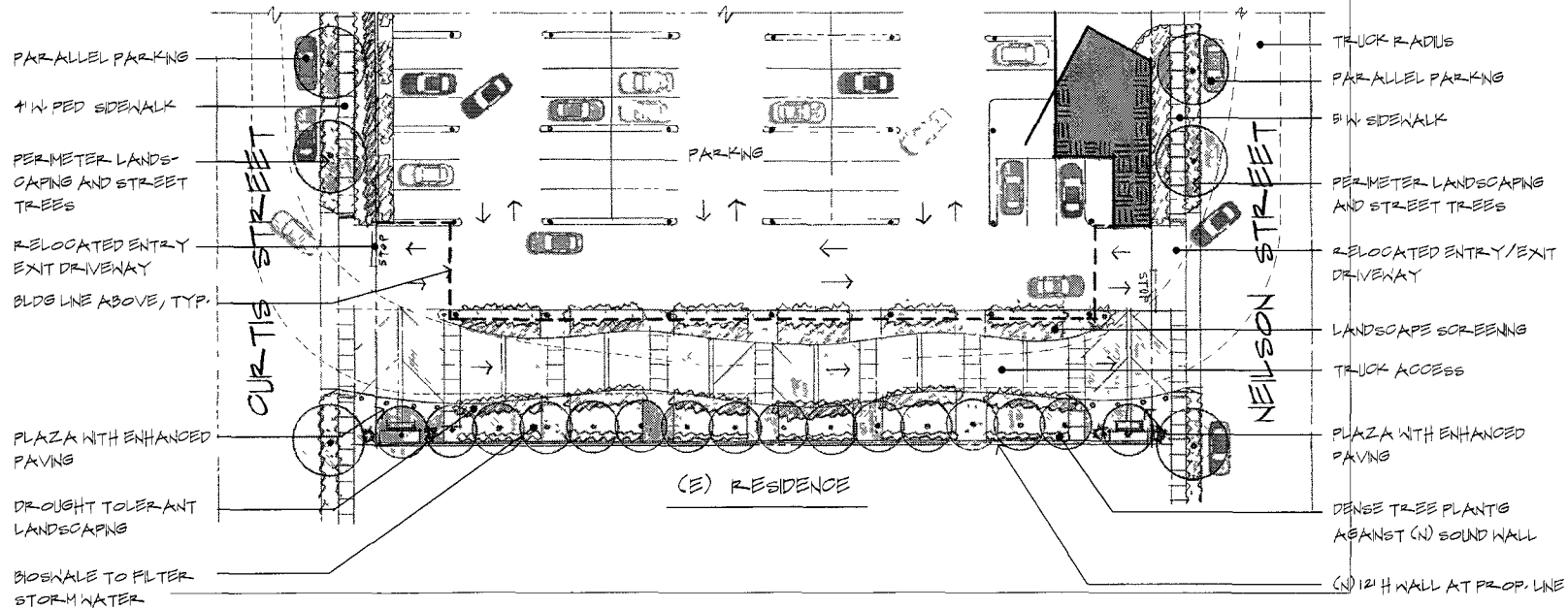
CITY ENGINEER	DATE
PROJECT NO.	SCALE
DATE	DATE
BY	BY

SAFeway STORE - #2869  
1500 SOLANO AVENUE ALBANY CALIFORNIA  
SAFeway

OPTION A



PARTIAL GARAGE LEVEL PLAN



OPTION 'B'