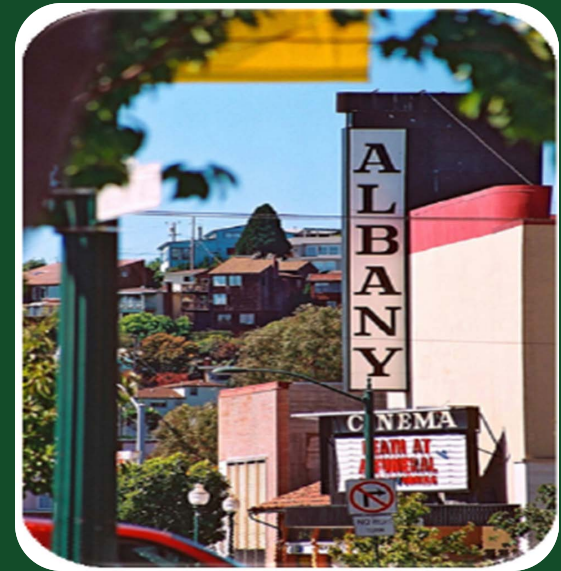


Presentation to the Albany Sustainability Committee

December 15, 2010



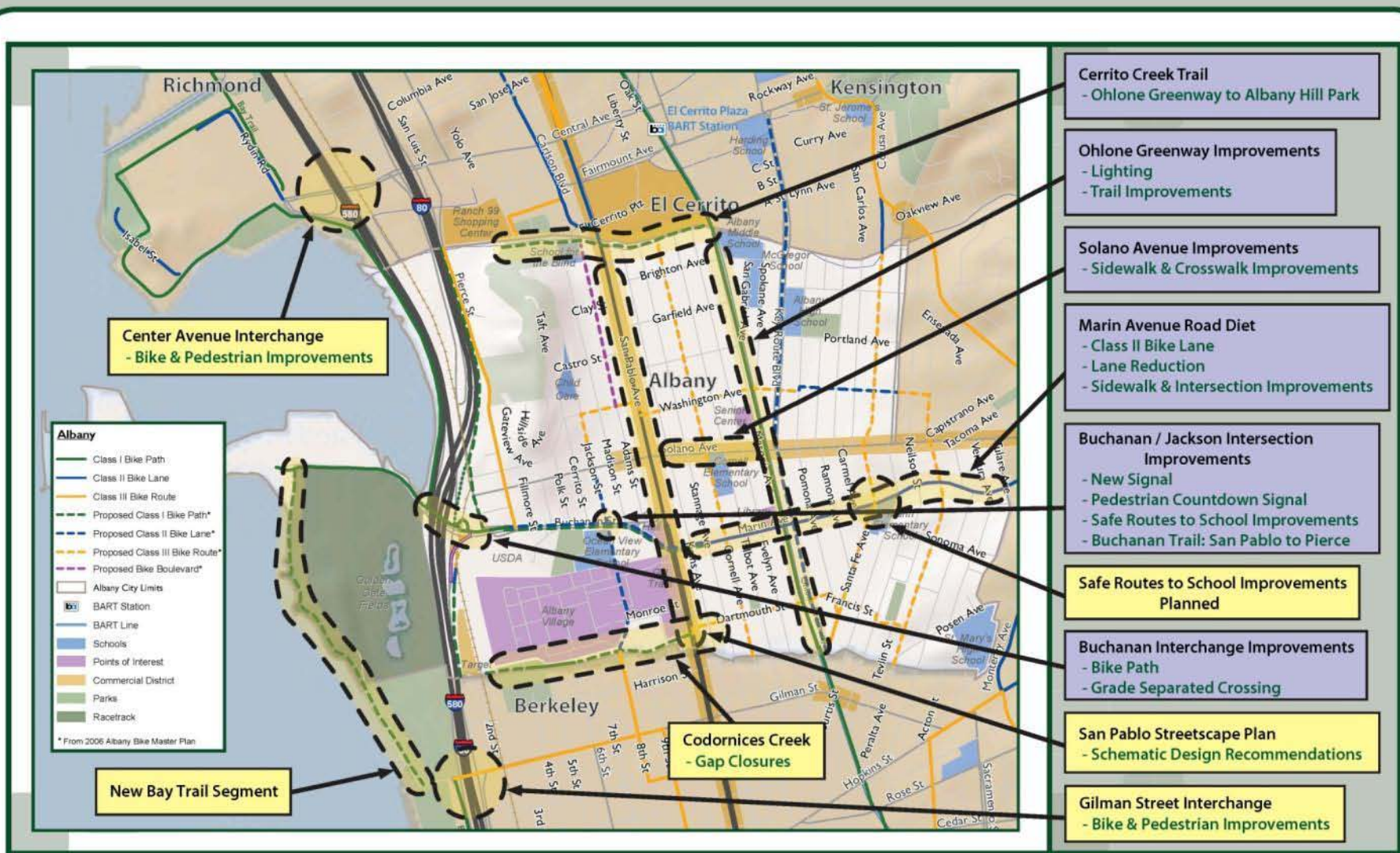
Albany Active Transportation Plan

Introduction to the Plan



Photo credit: www.albanystrollroll.org

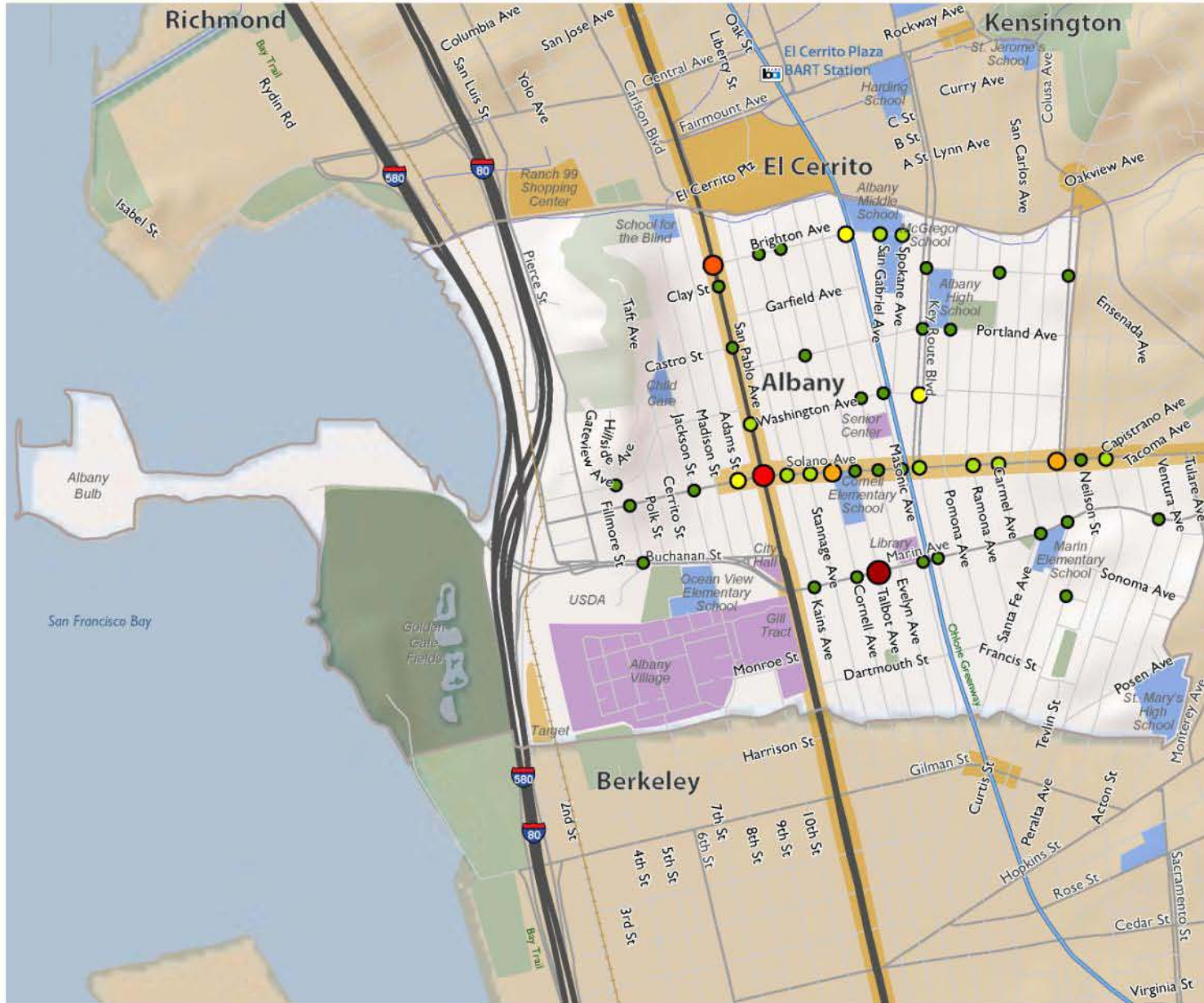




Recent & On-going City Projects

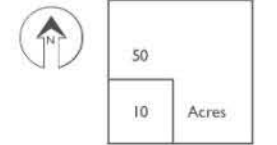
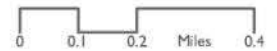
- Completed projects
- On-going projects





Collisions: Pedestrians

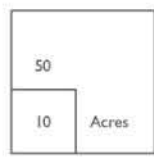
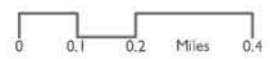
- 1 Pedestrian Injury
- 2 Pedestrian Injuries
- 3 Pedestrian Injuries
- 4 Pedestrian Injuries
- 6 Pedestrian Injuries
- 11 Pedestrian Injuries
- 1 Pedestrian Fatality

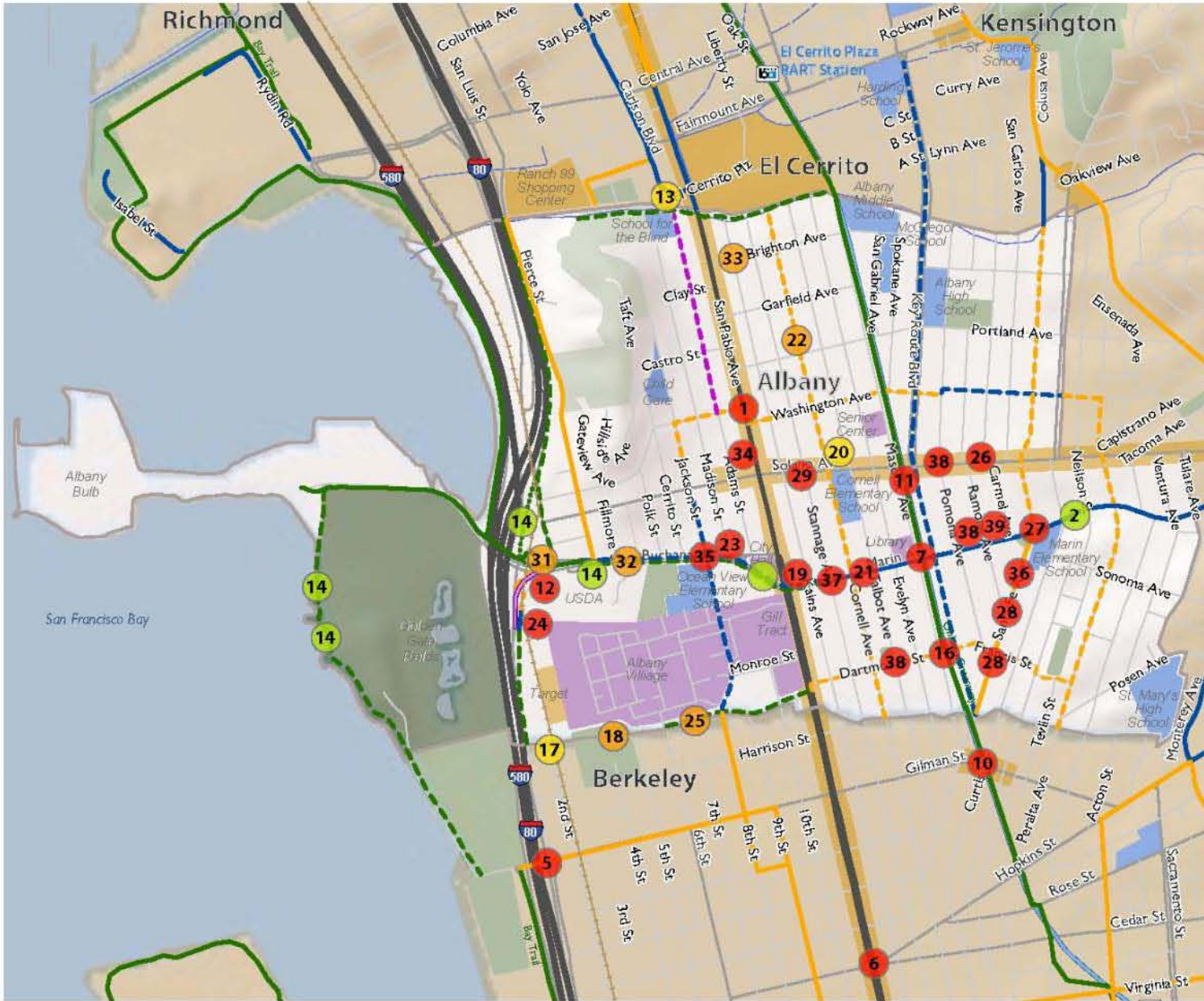




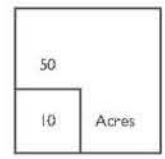
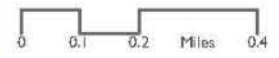
Collisions: Bicyclists

- 1 Bicycle Injury
- 2 Bicycle Injuries
- 3 Bicycle Injuries





- Albany**
- Class I Bike Path
 - Class II Bike Lane
 - Class III Bike Route
 - - - Proposed Class I Bike Path
 - - - Proposed Class II Bike Lane
 - - - Proposed Class III Bike Route
 - - - Proposed Bike Boulevard
 - Albany City Limits
 - BART Station
 - BART Line
 - Schools
 - Points of Interest
 - Commercial District
 - Parks
 - Racetrack



Albany Active Transportation Plan: Public Input



Albany Active Transportation Plan

- What makes a place walkable & bikable?
 - Good Streets
 - Good Intersections
 - Good Crossings
 - Good Access

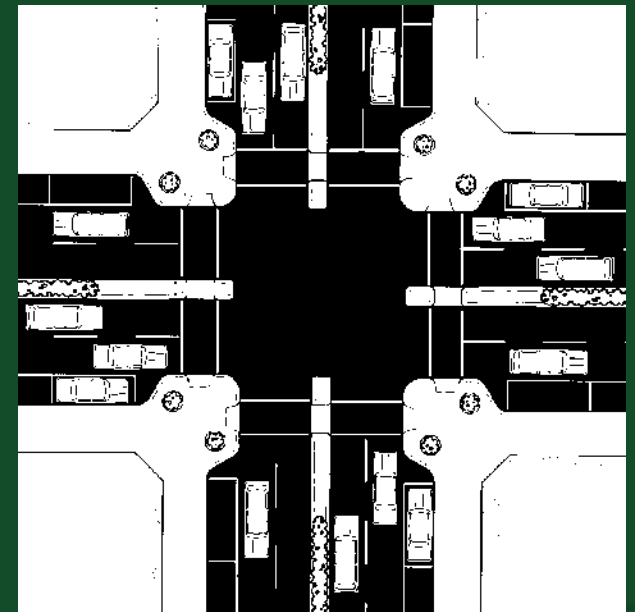


- Include bike accommodations
- Have great sidewalk environments
- Keep lanes narrow
- Use medians whenever practical
- Keep number of lanes to a minimum



Good Intersections

- Are compact
- Use curb extensions
- Have crosswalks on all approaches
- Have short pedestrian crossings



FEHR & PEERS
TRANSPORTATION CONSULTANTS

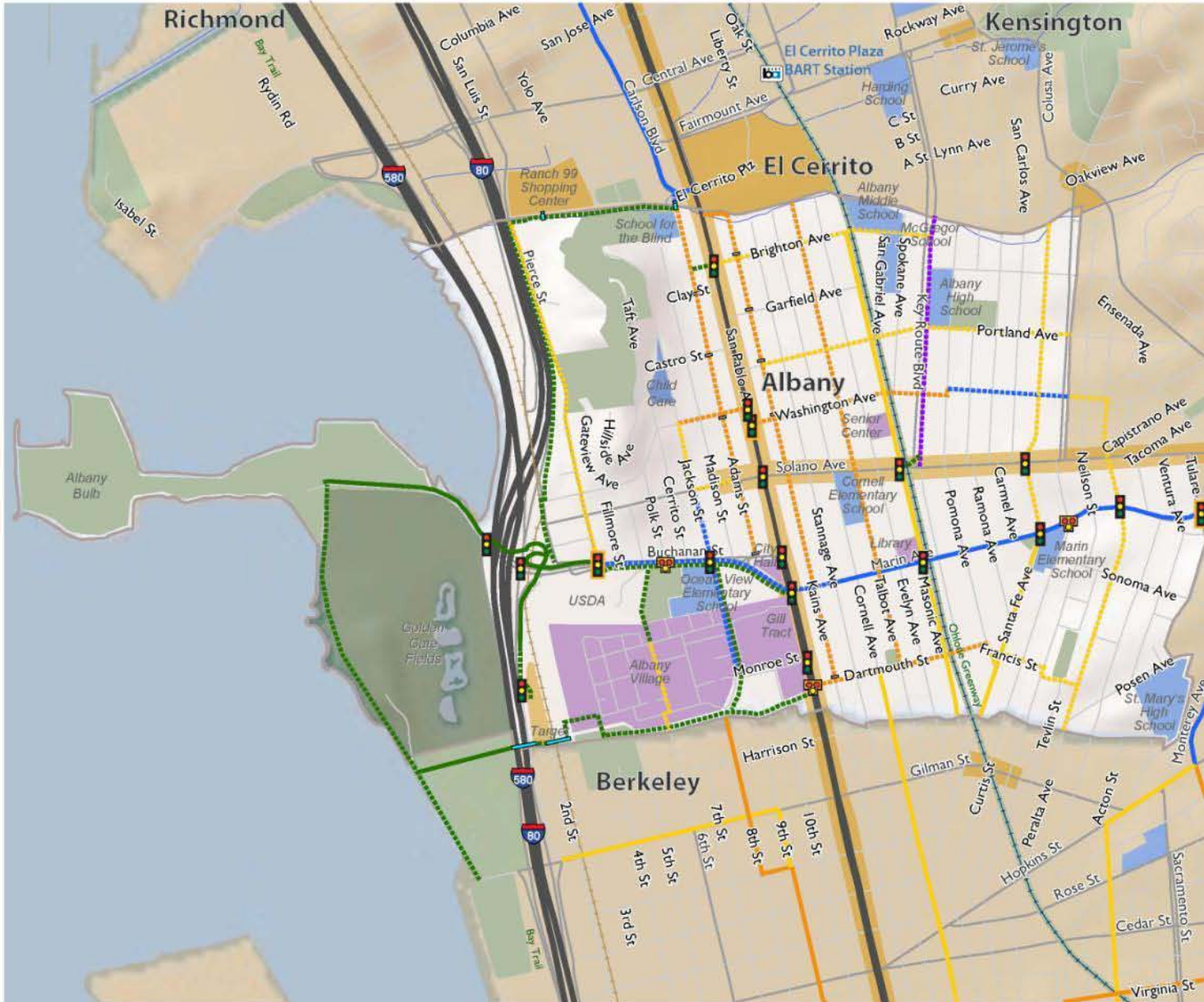
Good Crossings

- Are highly visible
- Are marked and signed
- Use enhancements, where appropriate



- Have street activity
- Are organized
- Are calmed
- Have links to transit
- Have medium to high density land use
- Have grid like street networks
- Have public art



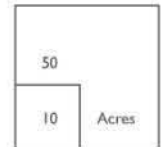
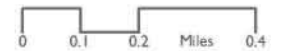


Albany

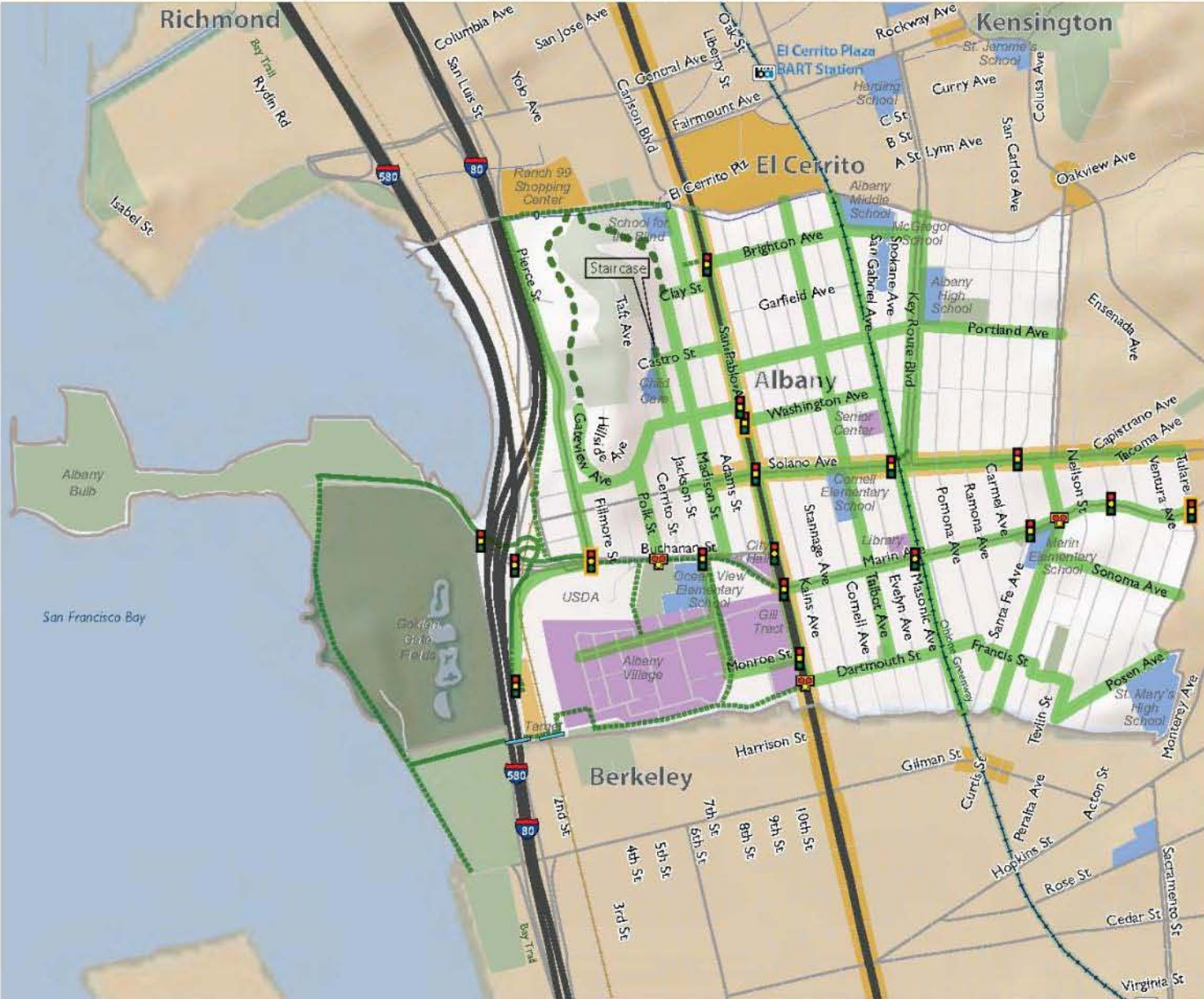
- Albany City Limits
- BART Station
- BART Line
- Schools
- Points of Interest
- Commercial District
- Parks
- Racetrack

Bikeway Type Existing Proposed

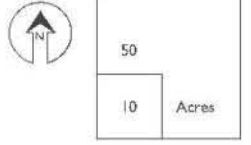
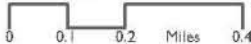
- Class I Path
- Class II Lane
- Class II Buffered Lane
- Class III Boulevard
- Class III Route
- Bridge
- Traffic Signal
- Ped Hybrid Beacon
- Partial Closure



Pedestrian Priority Network



- Albany**
- Proposed Pedestrian Priority Network
 - - - Class I Shared Use Path (Pedestrian & Bikes Permitted)
 - · · · · Proposed Class I Shared Use Path (Ped & Bikes Permitted)
 - · · · · Pedestrian Path
 - Albany City Limits
 - BART Station
 - BART Line
 - Schools
 - Points of Interest
 - Commercial District
 - Parks
 - Racetrack
 - Existing Signal
 - Proposed Signal
 - Proposed Ped Hybrid Beacon
 - Proposed Pedestrian/Bicycle Bridge



Masonic Avenue Bike Route



Talbot Avenue Bike Boulevard



37°53'24.06" N 122°17'43.56" W elev. 60 ft



FEHR & PEERS
TRANSPORTATION CONSULTANTS

Jackson Street Safe Routes to School



Jackson Street Safe Routes to School



009 37°53'13.72" N 122°17'57.52" W elev 37 ft



FEHR & PEERS
TRANSPORTATION CONSULTANTS

Kains Avenue Bike Route



Kains Avenue Bike Route



37°53'24.06" N 122°17'43.56" W elev



Solano Avenue Streetscape, Greening & Pedestrian Safety Project



R1-6

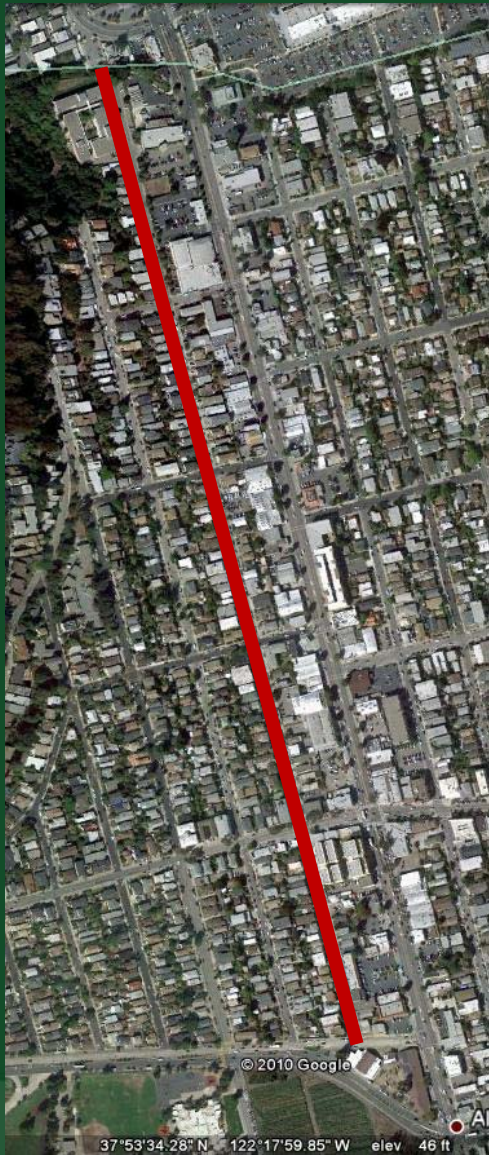
Sign image from the Manual of Traffic Signs <<http://www.traffic-sign.us/>>
This sign image copyright Richard C. Moeur. All rights reserved.



Adams Street Bike Route

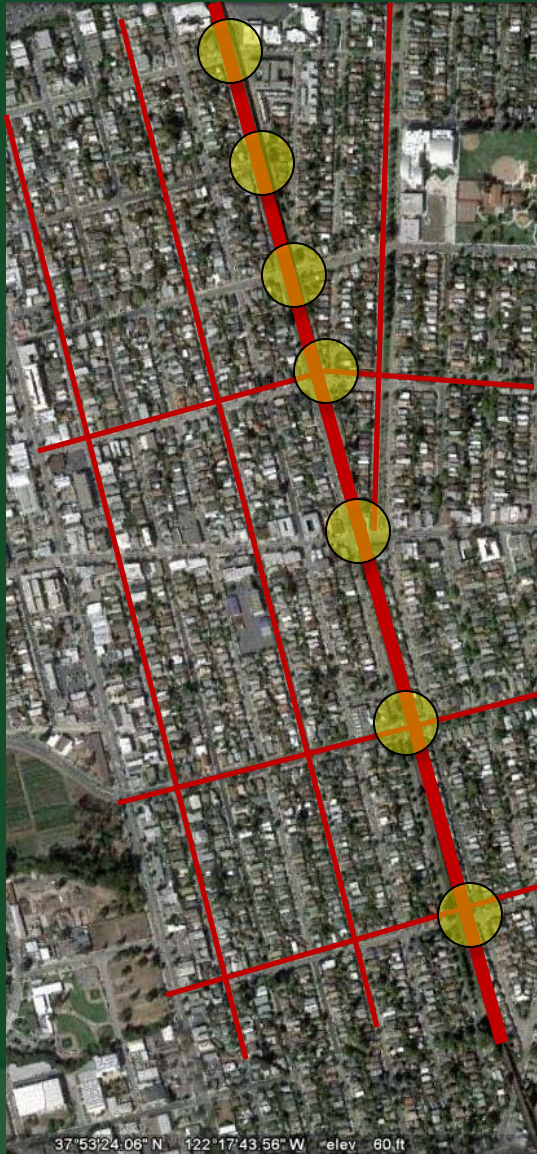


Adams Street Bike Route



FEHR & PEERS
TRANSPORTATION CONSULTANTS

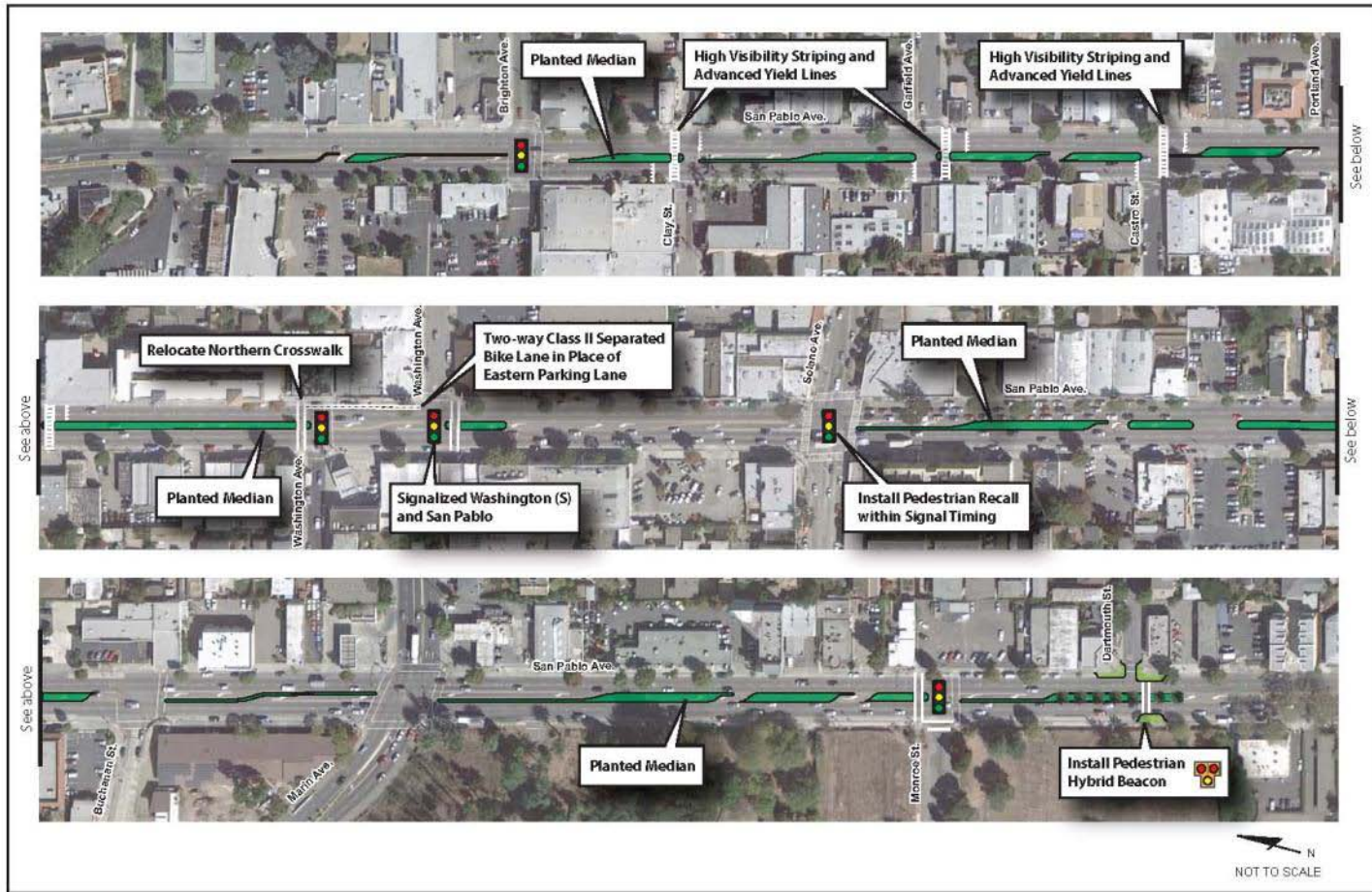
Ohlone Greenway Crossings



37°53'24.06" N 122°17'43.56" W elev. 60 ft



San Pablo Avenue Streetscape and Pedestrian Safety Project



FEHR & PEERS
TRANSPORTATION CONSULTANTS

San Pablo Streetscape and Pedestrian Improvements



Marin Avenue Pedestrian and Bicycle Enhancements



FEHR & PEERS
TRANSPORTATION CONSULTANTS

Eastshore Frontage Road Path



FEHR & PEERS
TRANSPORTATION CONSULTANTS

Dartmouth Street Shared Street Concept

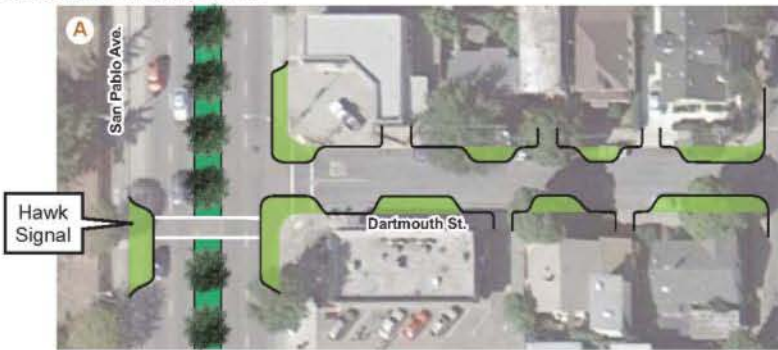


FEHR & PEERS
TRANSPORTATION CONSULTANTS

Dartmouth Shared Street Concept



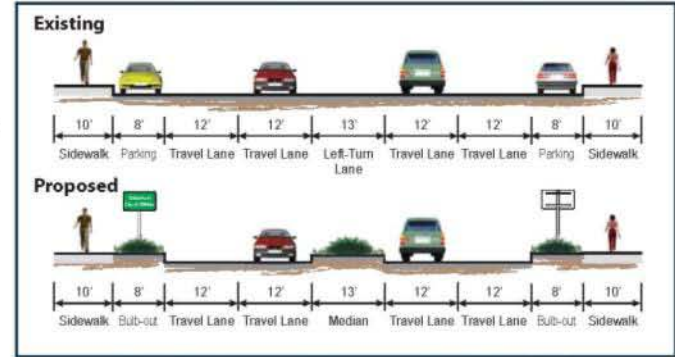
Conceptual Intersection Plans



Dartmouth Street/San Pablo Avenue



Dartmouth Street/Masonic Avenue - Pomona Avenue



San Pablo Avenue at Dartmouth Street Cross Section



Shared Street Concept Plan
(from SF Better Streets Plan, 2010)

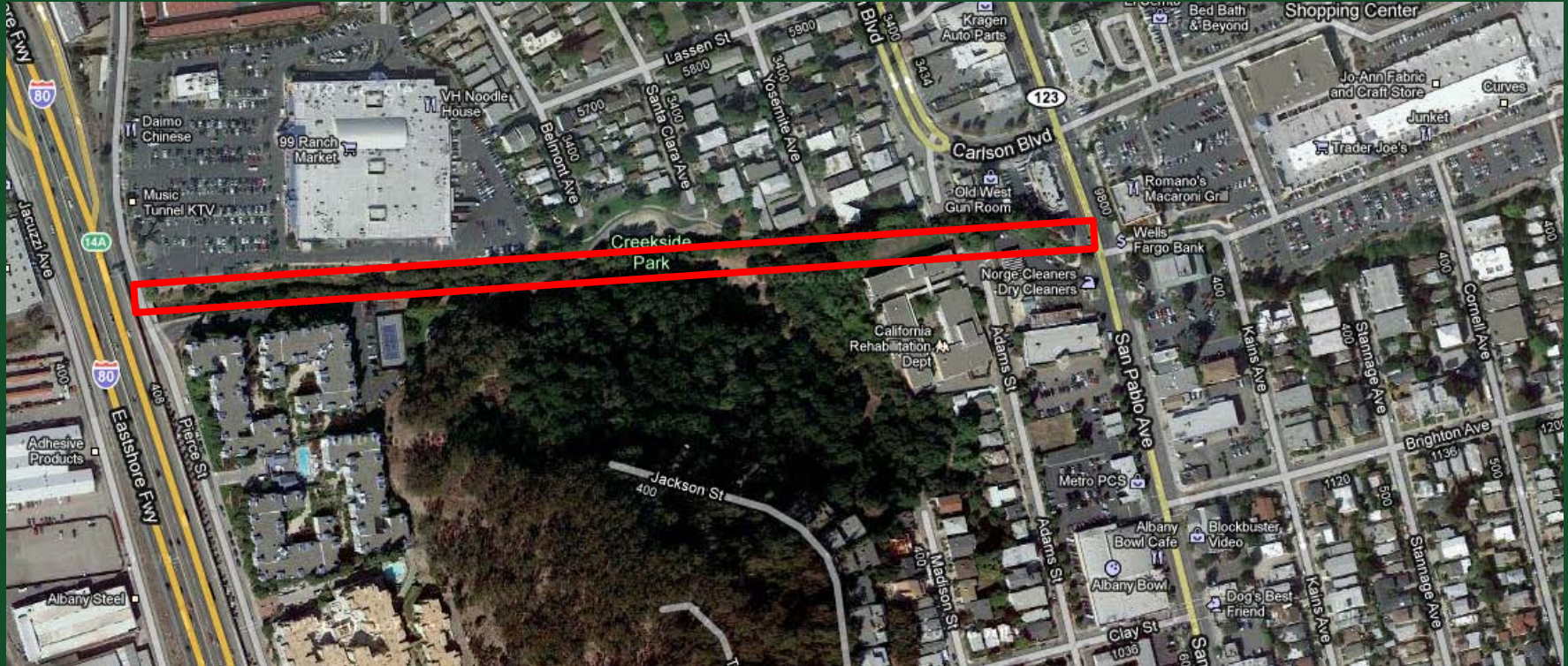


Dartmouth Street Shared Street Concept



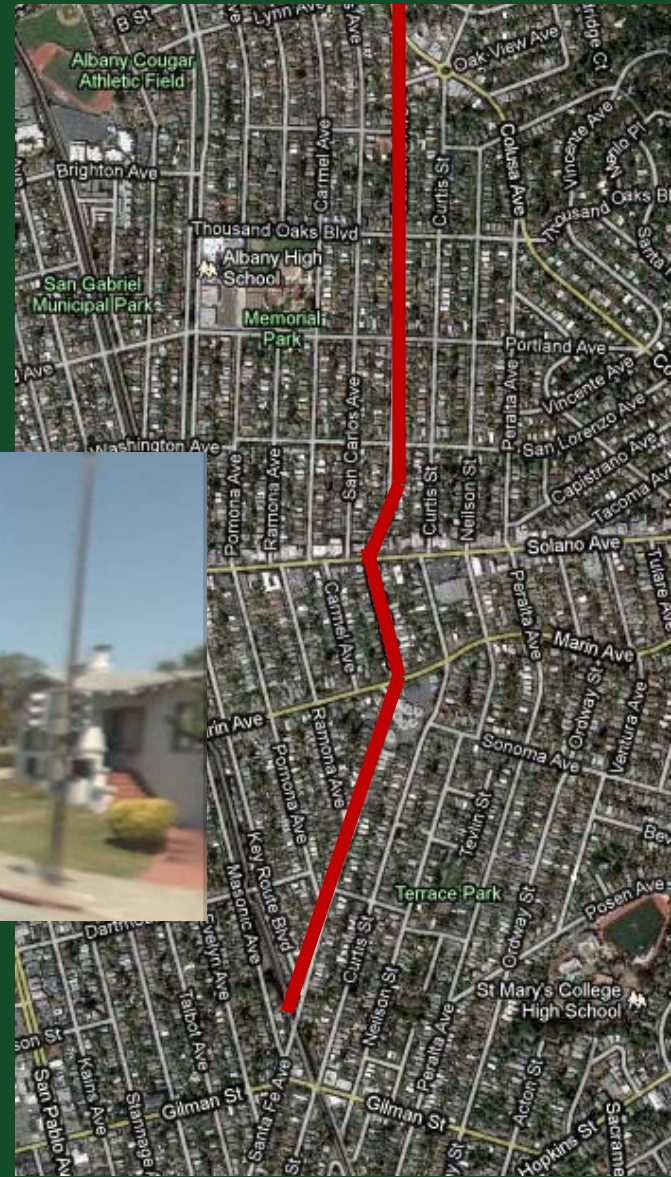
FEHR & PEERS
TRANSPORTATION CONSULTANTS

Cerrito Creek Path



FEHR & PEERS
TRANSPORTATION CONSULTANTS

Santa Fe Bike Route



FEHR & PEERS
TRANSPORTATION CONSULTANTS

Washington Avenue Bike Boulevard



FEHR & PEERS
TRANSPORTATION CONSULTANTS

Washington Avenue Bike Boulevard



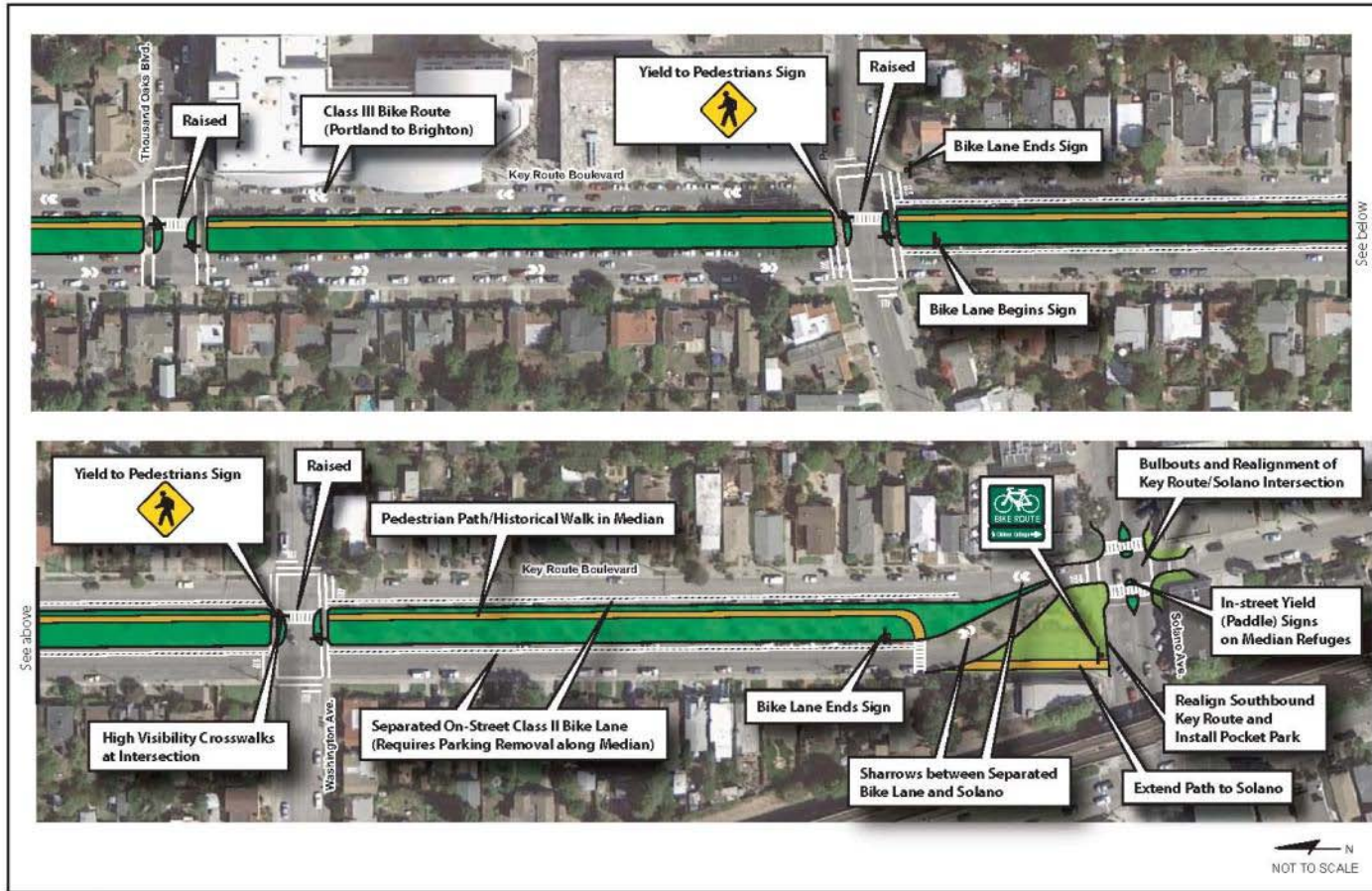
BICYCLE BOULEVARD

HILLEGASS-BOWDITCH

↑	Miles
Oakland	0.1
←	
Rockridge	0.5
Rockridge BART	0.8



Key Route Boulevard Separated Bikeway and Median Path



FEHR & PEERS
TRANSPORTATION CONSULTANTS

Key Route Boulevard Separated Bikeway and Median Path

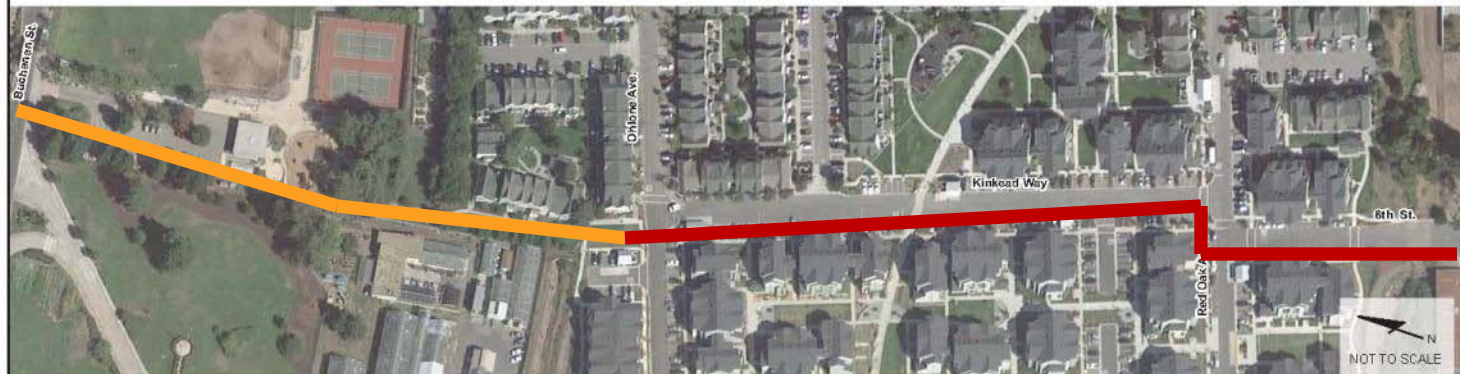


City Hall Pedestrian and Bicycle Improvements



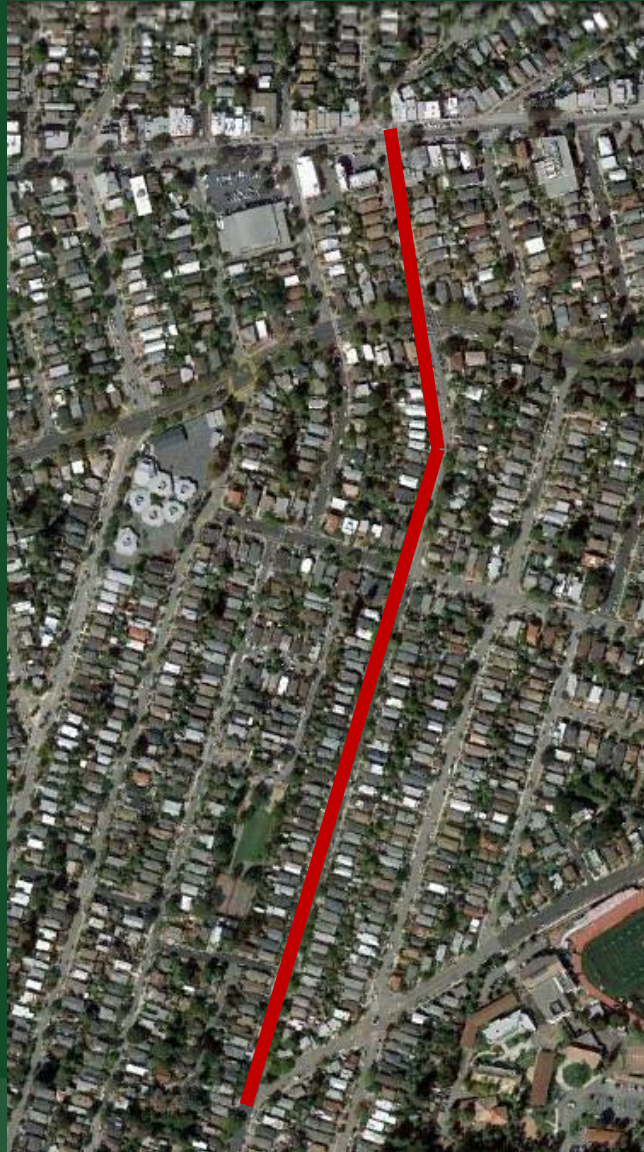
FEHR & PEERS
TRANSPORTATION CONSULTANTS

Polk Street/ Cordonices Creek Connection



FEHR & PEERS
TRANSPORTATION CONSULTANTS

Peralta Bike Route

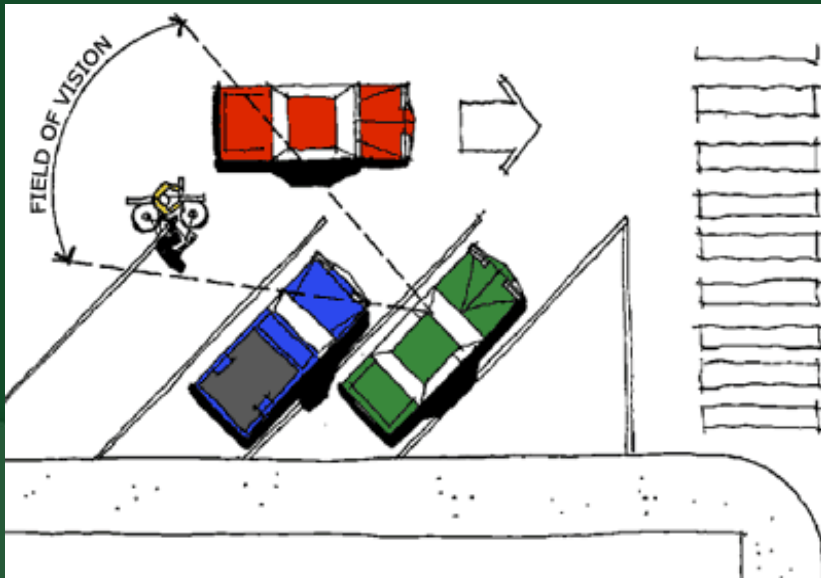


Portland Avenue Safe Routes to School

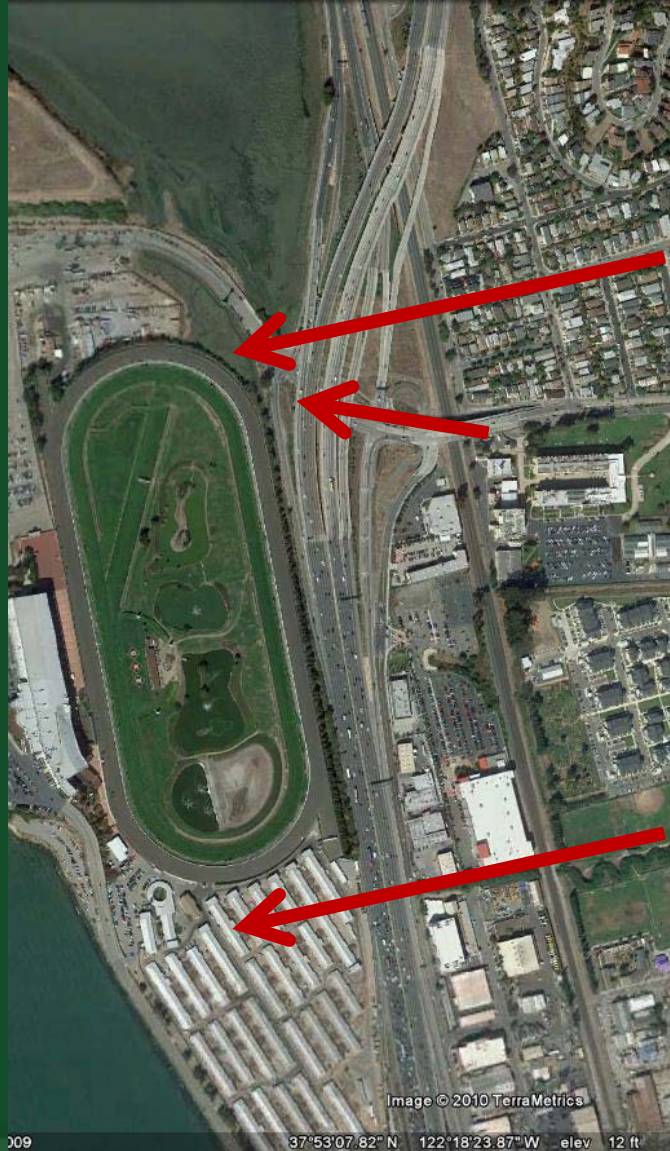


FEHR & PEERS
TRANSPORTATION CONSULTANTS

Portland Avenue Safe Routes to School



Waterfront Connections



Planned Projects



Questions or Comments?

