

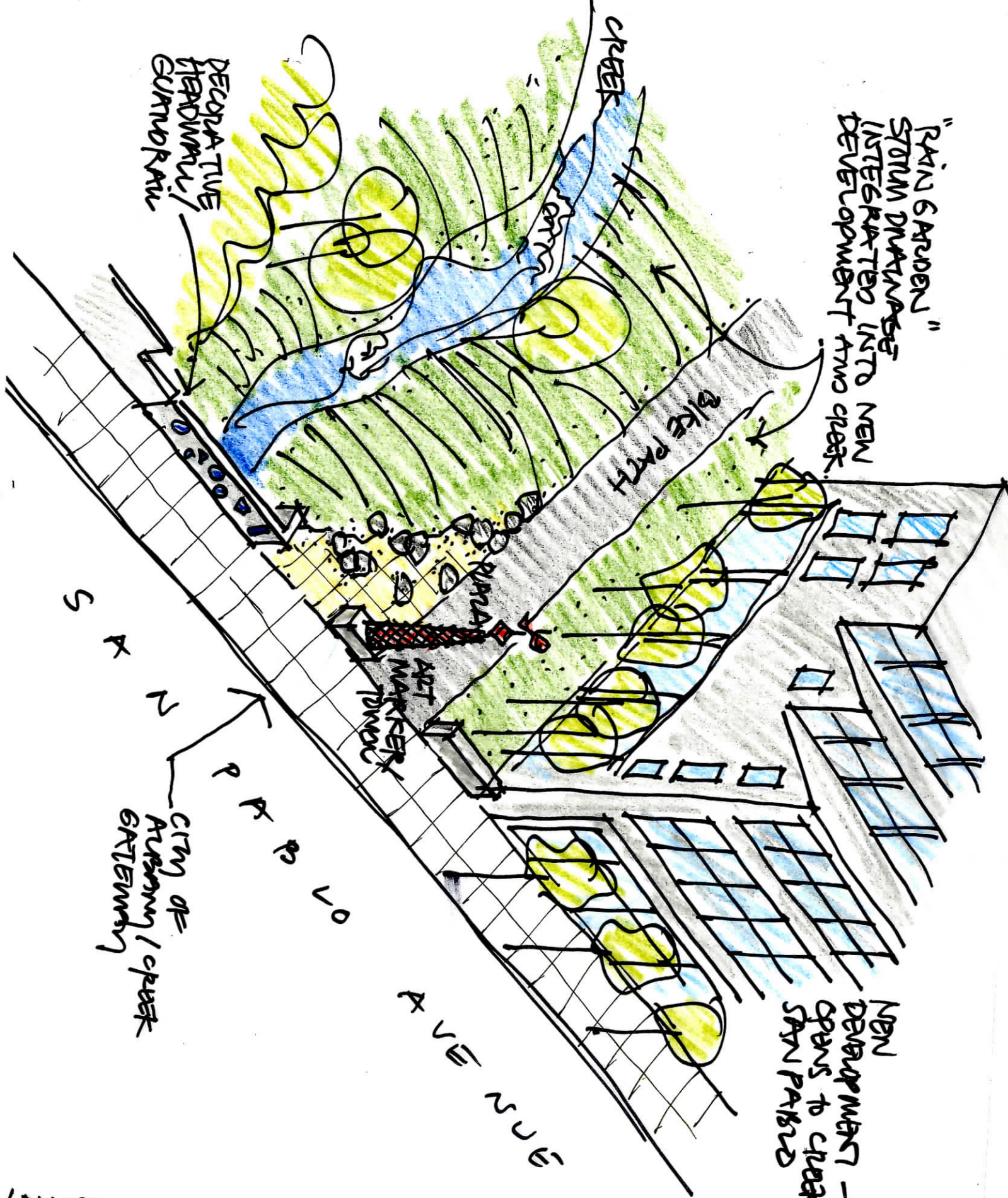
"PRIN GRUBER"
 STORMWATER
 INTEGRATED INTO NEW
 DEVELOPMENT AND CREEK.

DEGRADATIVE
 WEATHER ELEMENTS

CITY OF
 ASHBYM / CREEK
 GATEWAY

NEW
 DEVELOPMENT -
 OPENS TO CREEK &
 SAN PABLO

LOWER CODORNICES CREEK RESTORATION
 SAN PABLO GATEWAY REACH 2. 4.5.10/RDS



"RAIN GARDEN"
 STORM WATERWAYS
 INTEGRATED INTO NEW
 DEVELOPMENT AND CREEK.

DECORATIVE
 HEADWALL /
 GUMDRAIN

Bike PATH

ART
 MARKET
 TOWER

CITY OF
 Avening / Creek
 GATEWAY

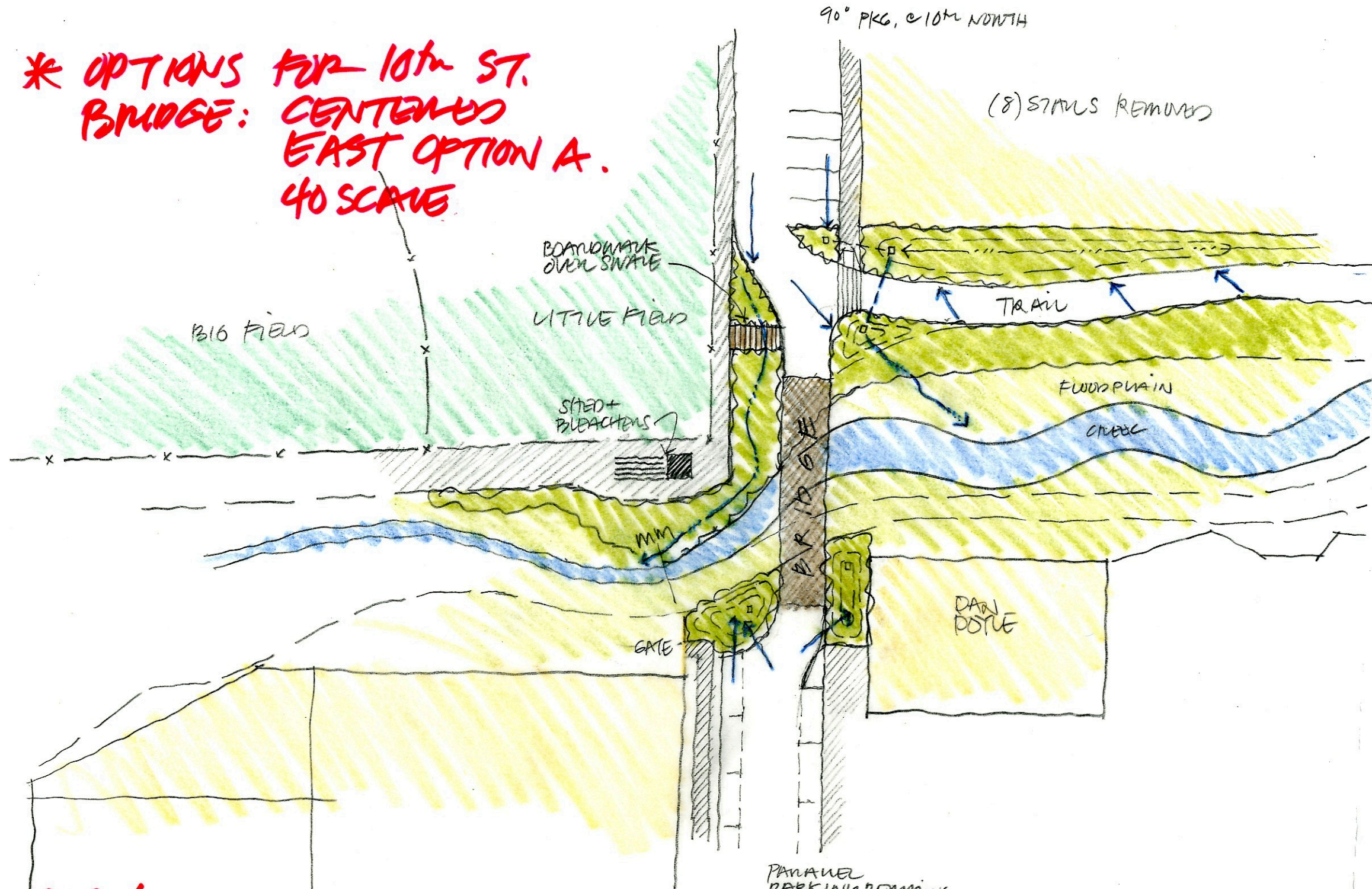
AVENUE

NEW
 DEVELOPMENT -
 SPANS TO CREEK &
 SAN PABLO

LOWER CODORNICES CREEK RESTORATION
 SAN PABLO GATEWAY REACH 1.

4.5.10 / RDG

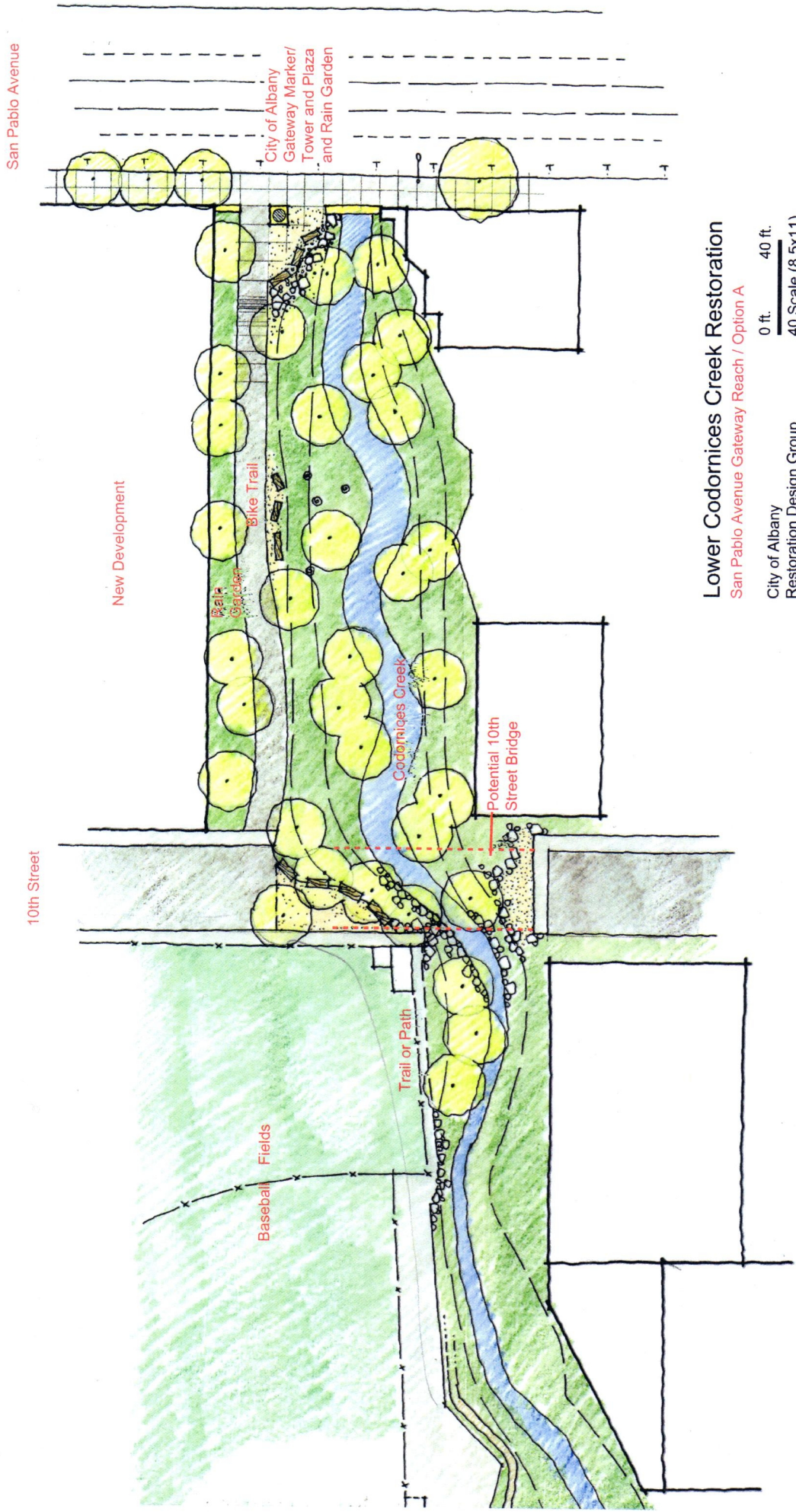
* OPTIONS FOR 10th ST.
BRIDGE: CENTERED
EAST OPTION A.
40 SCALE



CCS / SAN PABLO GATEWAY

PARADEL
PARKING REMAINS
@ 10th SOUTH

7 APRIL '16



Lower Codornices Creek Restoration
 San Pablo Avenue Gateway Reach / Option A
 City of Albany
 Restoration Design Group
 5 April 2010

0 ft. 40 ft.
 40 Scale (8.5x11)
 North