

Marin Elementary School Pedestrian Improvements



Replace existing signal at Marin and S. Fe intersection with new detector system and pedestrian count down heads

Reconfigure the curbs at Marin/S. Fe intersection to decrease turning radius

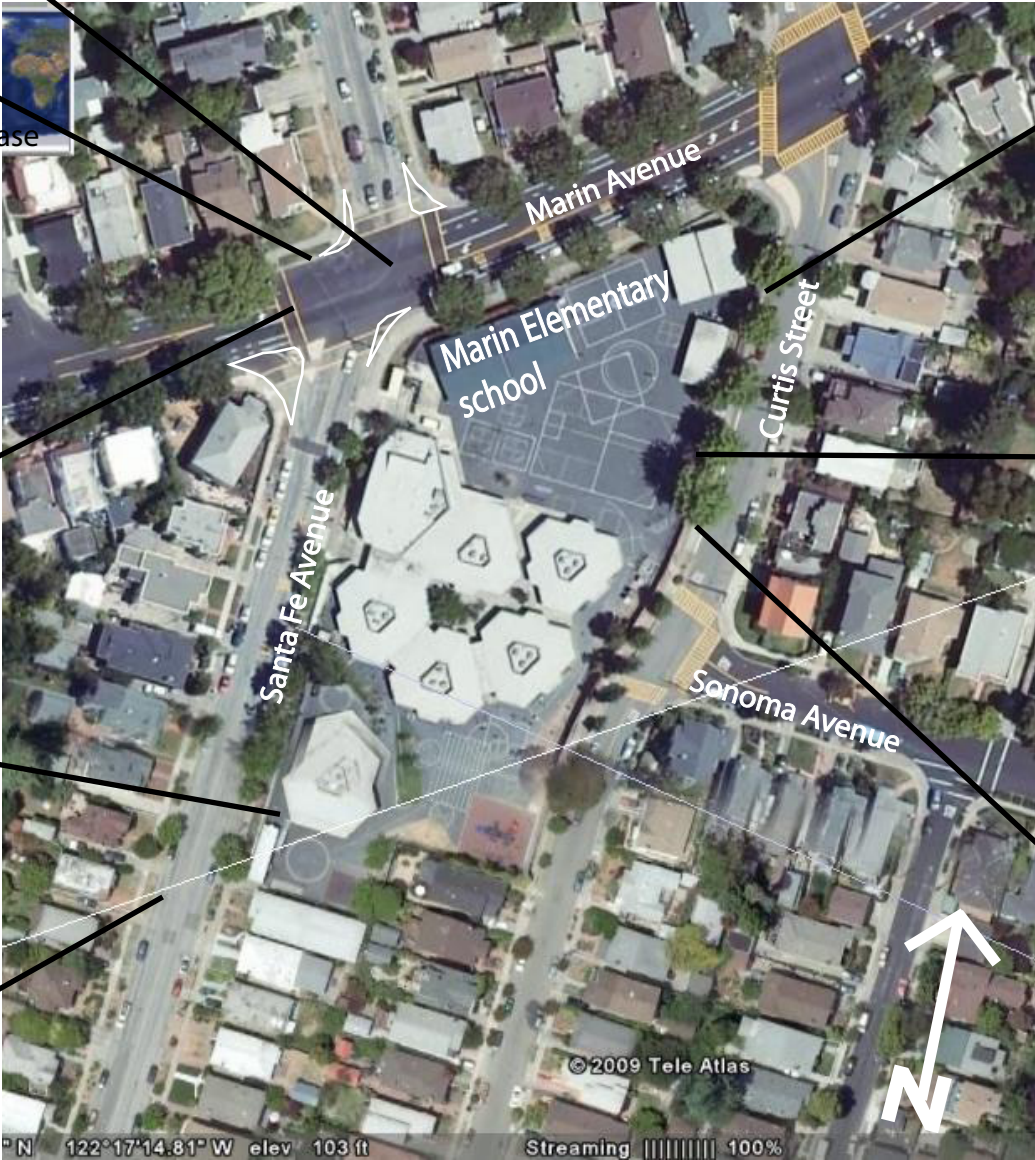


Move crosswalks closer to the intersection of Marin and S. Fe

Reconfigure existing disabled curb ramp to comply with ADA Standards



install a speed hump on the 1000 block of Santa Fe Avenue



Replace and widen sidewalk along Curtis St. to comply with ADA requirements



Install bike racks at the school



Remove existing unused driveway